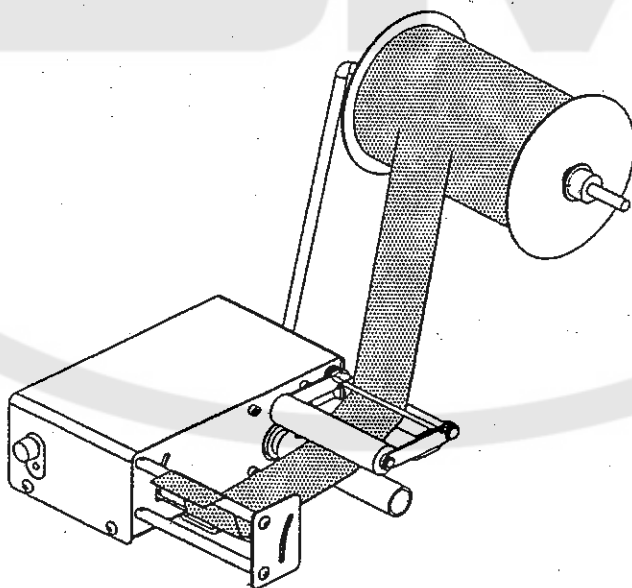


取扱説明書
&
パーツブック

INSTRUCTIONS
&
PARTS BOOK

AEF-32

クランプ式自動テープ・ゴム送り装置
COMPACT TYPE CLAMP SYSTEM
AUTOMATIC TAPE FEEDER



取扱説明書は全て保管しておいて下さい。
安全にお使い頂くため、
最後までよくお読みになってからご使用下さい。

SAVE ALL INSTRUCTION MANUALS.
READ and UNDERSTAND
THOROUGHLY to OPERATE for SAFE USE.



ヤマトミシン製造株式会社
YAMATO SEWING MACHINE MFG. CO., LTD.

目次 / Contents

1. 装置の組立て及び据付け	1
2. ゴムテープの通し方	2
3. 調整	3
3-1 スイッチレバーの調節	3
3-2 コントロールパネルの名称と機能	3
4. 電気関係の仕様	4
4-1 仕様	4
4-2 電源コードのつなぎ方	4
4-3 注意事項	4

1. Assembly and installation of device	6
2. Setting elastic tape	7
3. Adjustment	8
3-1 Adjustment of switch lever	8
3-2 Designation and function of control panel	8
4. Electric specifications	9
4-1 Specifications	9
4-2 Connection of power cords	9
4-3 Notice	9

***** ILLUSTRATED SPARE PARTS LIST *****

1. Assembly and installation of device

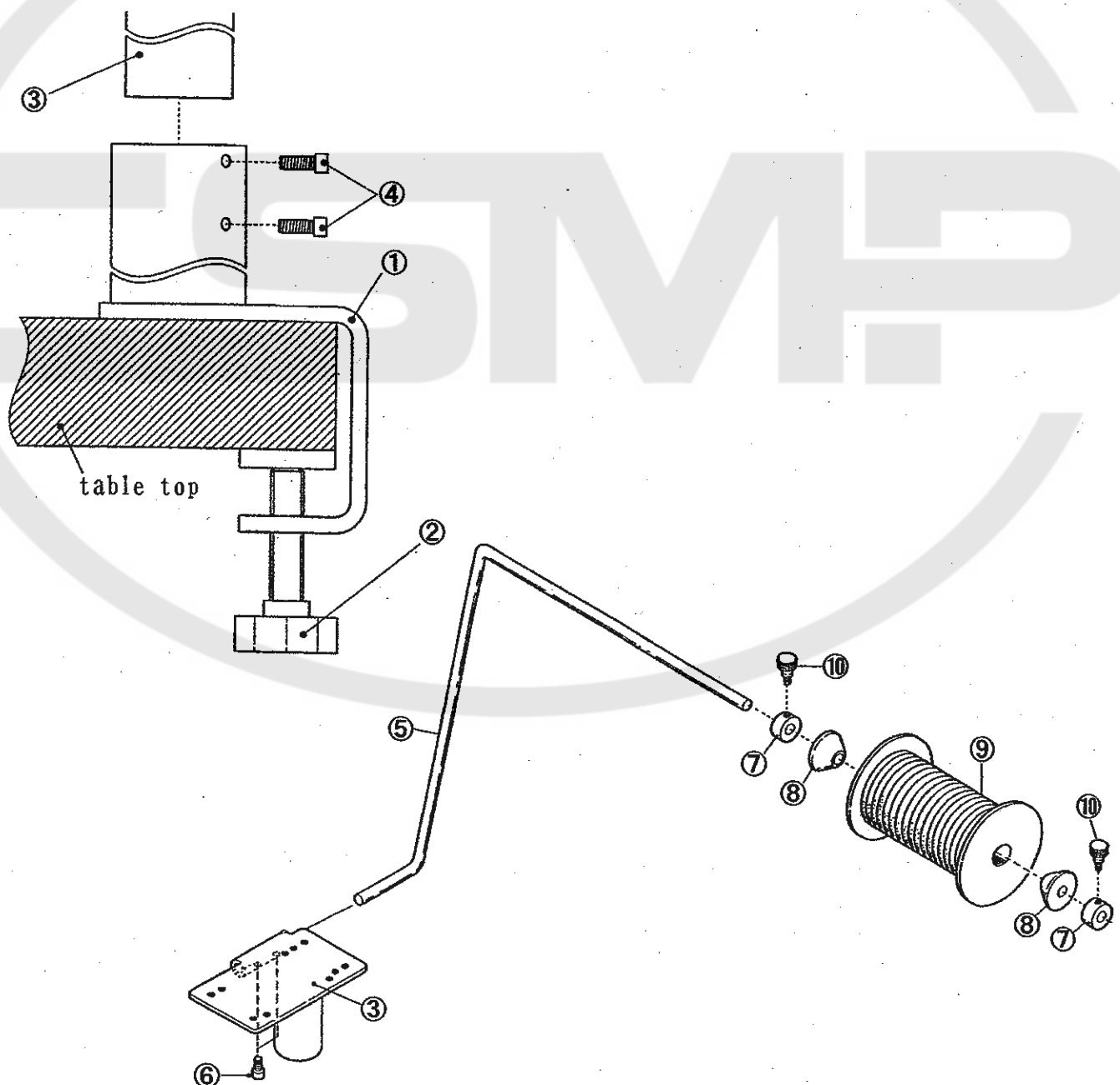
Some parts are dis-assembled from the device for packing and transport.

The device must be assembled as following the process.

1. Fix the clamp① on the table by the knob②.
2. Install the base③ to the clamp① and fix it by the screws④.
3. Insert the tape spool guide shaft⑤ into the base③ and fix it by the screws⑥.
4. Put collar⑦, tape spool guide⑧, tape spool⑨, tape spool guide⑧ and collar⑦ into the guide shaft⑤ in this order.

and adjust as follows ;

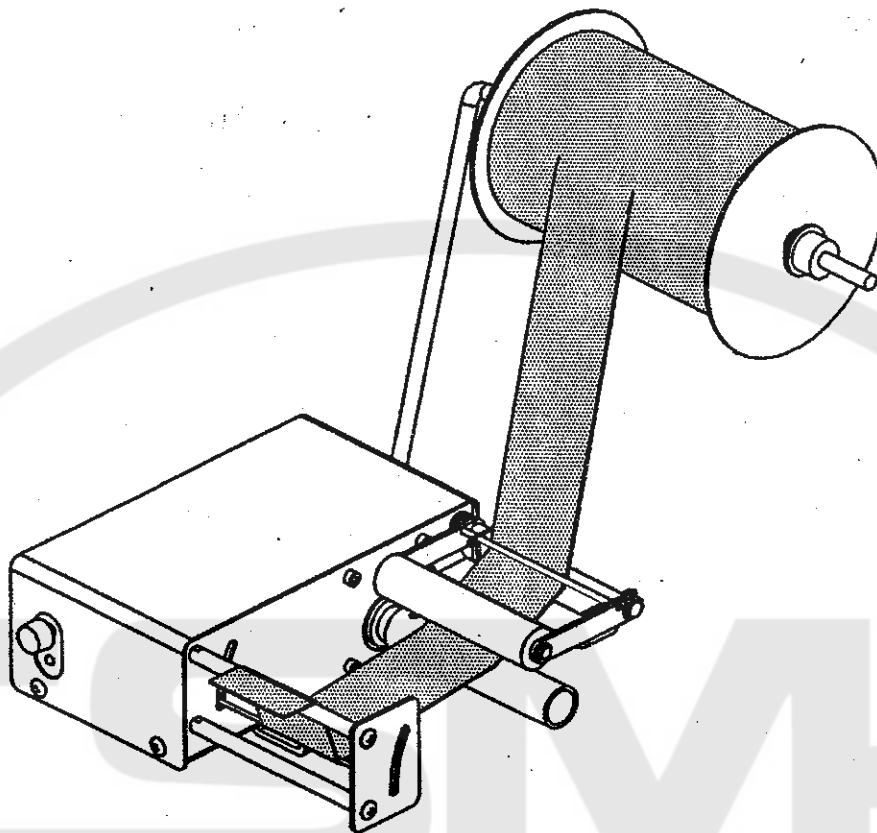
- a). Loosen the knob② and adjust the position of device right and left.
- b). Loosen the screws④ then adjust the position of device in height.
- c). Adjust the position of tape spool guide collars⑦ to obtain smoothy un-winding of tape spool⑨ and tighten the screws⑩.



2. Setting elastic tape

Load elastic tape correctly referring to the illustration.

After loading it, make sure that the elastic tape can be fed smoothly by pulling it lightly with hand.



	AEF-32
Tape width	100 mm (max.)
Height	100 mm - 160 mm
Width of clamp	20 mm - 50 mm (same as the thickness of table top)
Weight	3.4 kg

3. Adjustment

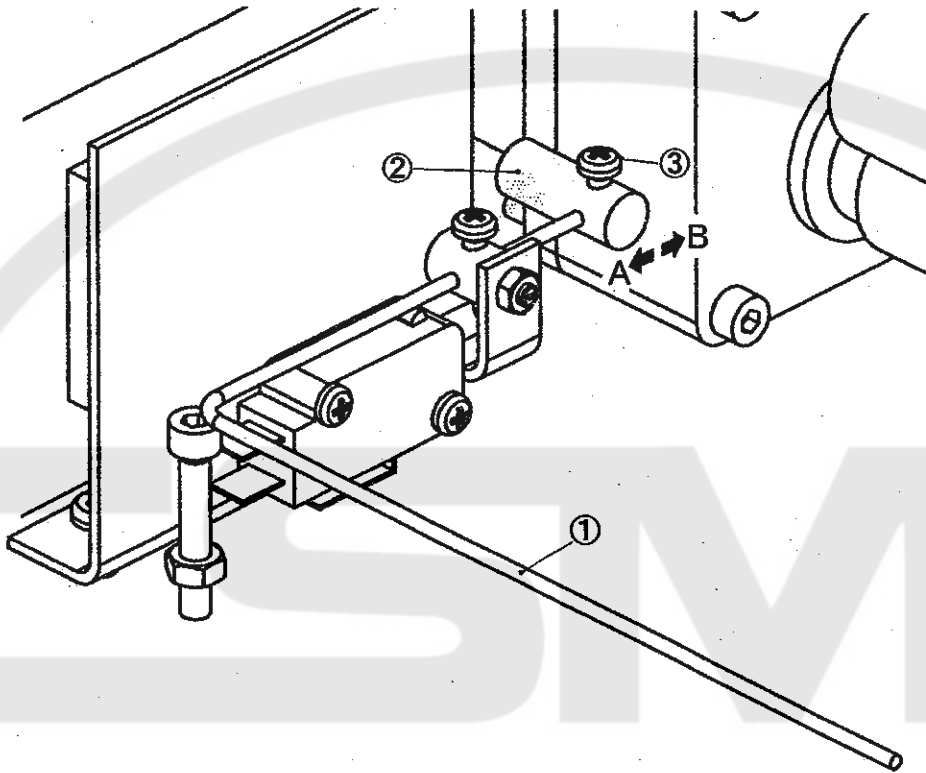
3-1 Adjustment of switch lever

Adjust the heaviness of switch lever① according to the elasticity of tape.

When removing the cover of control box, counterweight② can be seen.

When loosening screw③ and moving counterweight② to the direction "A", it becomes heavy and to the direction "B", it becomes light.

For the tape of great elasticity, adjust switch lever① lighter.

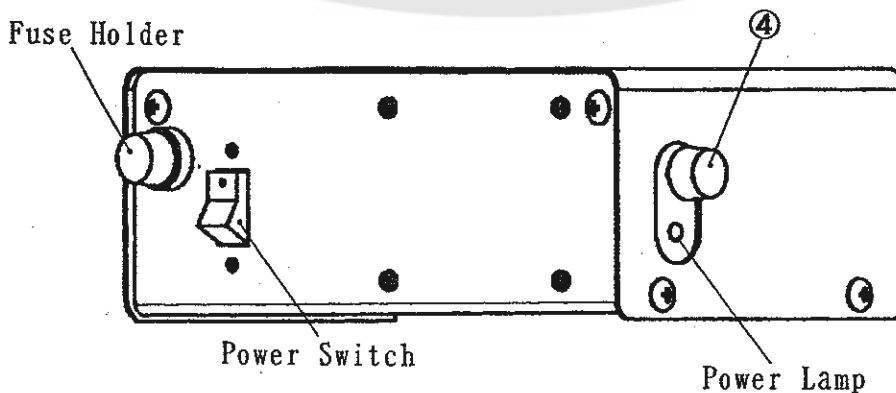


3-2 Designation and function of control panel

*FEEDING AMOUNT

Adjustment of feeding amount of tape is made by this adjusting knob④.

When turning it clockwise the feeding amount increases.



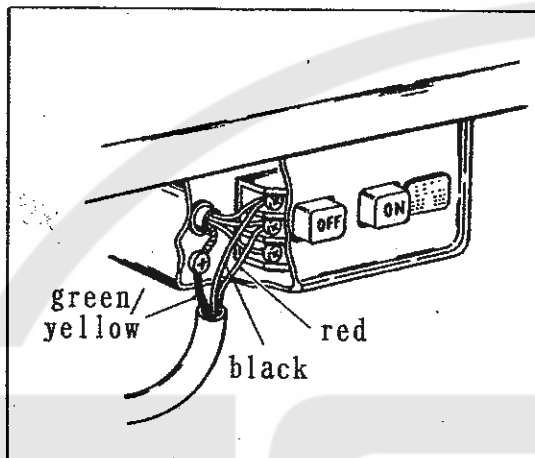
4. Electric specifications

4-1 Specifications

* Power voltage.....standard AC 200V (changeable to AC 100V - 380V)
50Hz/60Hz

* Driving motor.....induction motor 50Hz : 1,200r.p.m. 60Hz : 1,450r.p.m.

4-2 Connection of power cords



Connect red and black cords of power cord to power switch.

Green/yellow cord is an earth line and it must be connected to the screw connected with another earth line of motor side.

Note : When connect the cords to power switch, connect it to the terminal of motor side.

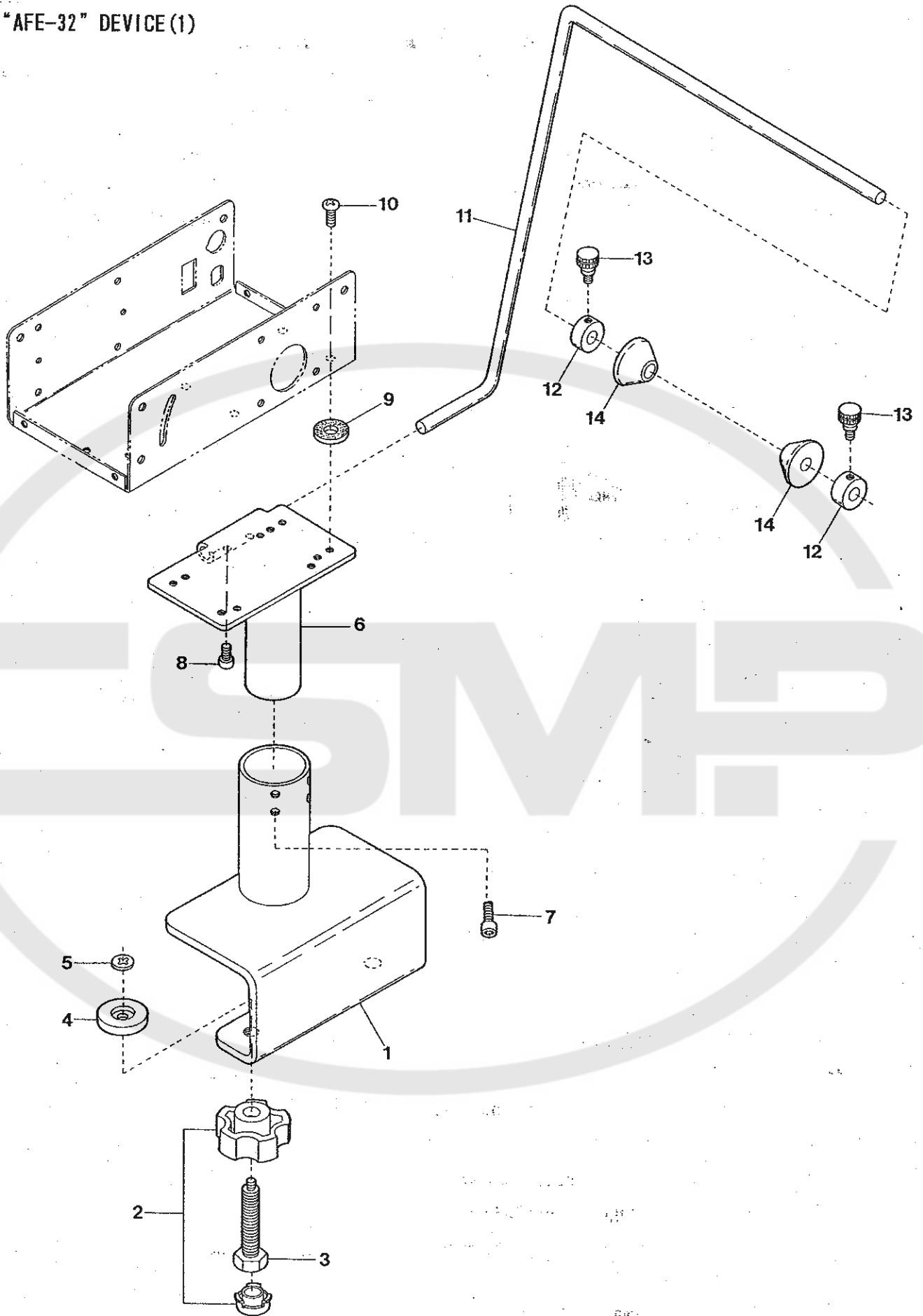
Power voltage	Capacity of fuse	Parts No.
100V - 110V	2A	1070020
200V - 240V	1A	0010912
380V	0.5A	0010529

Change the position of terminal on transformer in control box when the power voltage to be used is different with the voltage indicated on control box. And also, change the fuse to suit the voltage. Refer to left chart for electric capacity of fuse.

4-3 Notice

- ☆ Use regular fuse indicated on control box without fail.
Make sure the inscribed amp. because the fuse of the same diameter of glass tube are not necessary of the same current capacity.
- ☆ In case of using the fuse of greater current capacity, the damage spread to other elements and necessitate troublesome repair.
- ☆ When fuse is blown, change it only once.
If the fuse breaks immediately after change, there must be something wrong and careful check must be made.
- ☆ Be careful not to damage cords.
Cords must be fixed to machine table or leg to prevent the damage, because the cords will be damaged if it contacts to the moving objects.

"AFE-32" DEVICE (1)



"AEF-32" DEVICE (1)

"AEF-32"装置(1)

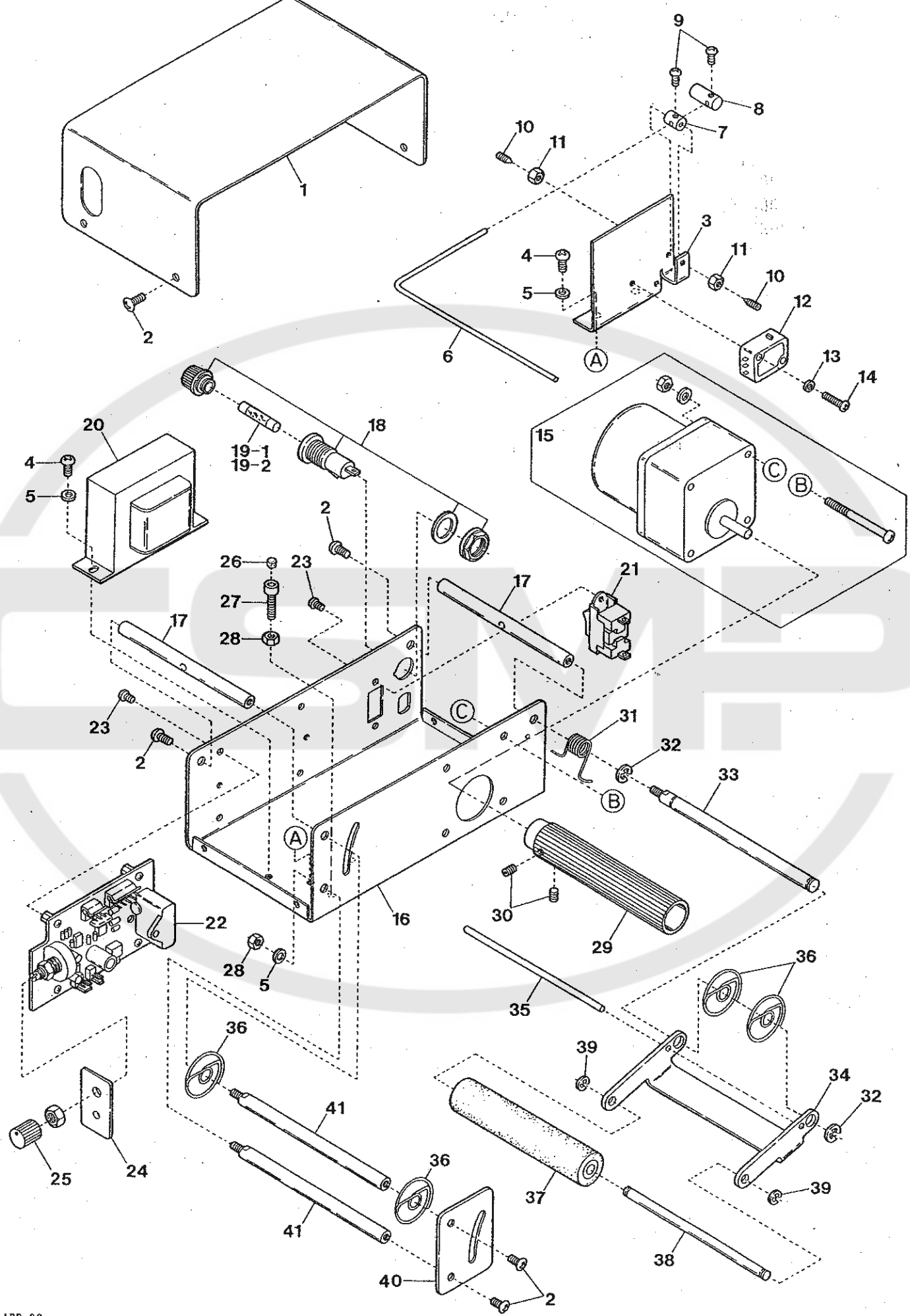
Ref. No.	Parts No.	Description	品名	Amt. Req.
1	1280156	Clamp	クランプ	1
2	1280127	Knob	ノブ	2
3	1280121	Bolt	ボルト	2
4	1280120	Knob Base	ノブベース	2
5	1280130	Retaining Ring	ストップリング	2
6	1280154	Base	ベース	1
7	009746	Screw(M4-0.7×8)	止ネジ	4
8	006202	Screw(M4-0.7×6)	止ネジ	2
9	0063010	Rubber Cushion	ゴム座	4
10	009770	Screw(M4-0.7×8)	止ネジ	4
11	1280155	Tape Spool Bar	スプールバー	1
12	0091173	Collar(8.2×19×12mm)	カラー	2
13	006434	Screw(9/64-40×7.9)	止ネジ	2
14	0091172	Tape Spool Guide	テープガイド	2

(注) カラーの寸法は内径×外径×幅を表しています。

Note: Size of Collar ... Inside dia.×Outside dia.×Thickness



"AEF-32" DEVICE (2)



"AEF-32" DEVICE (2)

"AEF-32"装置(2)

Ref. No	Parts No	Description	品名	Amt. Req.
1	1280151	Cover	カバー	1
2	006227	Screw(M4-0.7×5)	止ネジ	8
3	1280152	Lever Stand	レバースタンド	1
4	110012	Screw(M4-0.7×5)	止ネジ	4
5	000538	Washer	ワッシャ	5
6	1280109	Switch Lever	スイッチレバー	1
7	1280131	Switch Lever Roller	ローラ	1
8	1280110	Counterweight	バランスウェイト	1
9	009995	Screw(M3-0.5×5)	止ネジ	2
10	160034	Screw(M3-0.5×6)	止ネジ	2
11	000180	Nut	ナット	2
12	0011136	Switch	スイッチ	1
13	000014	Washer	ワッシャ	2
14	009957	Screw(M3-0.5×16)	止ネジ	2
15	1064072	Motor, C. Set	モータ(組)	1
16	1280150	Frame	フレーム	1
17	1280103	Frame Stay	フレームステイ	2
18	1070150	Fuse Holder	ヒューズホルダ	1
19-1	1070020	Fuse(2A)(for 100V - 110V)	ヒューズ(2A)(100~110V用)	2
19-2	0010912	" (1A)(for 200V - 240V)	" (1A)(200~240V用)	2
19-3	0010529	" (0.5A)(for 380V)	" (0.5A)(380V用)	2
20	1060019	Transformer	トランス	1
21	1066132	Power Switch	電源スイッチ	1
22	1057140	Control Board	制御基板	1
23	006233	Screw(M3-0.5×5)	止ネジ	6
24	1280107	Plate	プレート	1
25	1070149	VR Knob	VRツマミ	1
26	000930	Seal Plug	詰栓	1
27	120031	Screw(M4-0.7×20)	止ネジ	1
28	000015	Nut	ナット	2
29	1280116	Main Roller	メインローラ	1
30	160001	Screw(M4-0.7×4)	止ネジ	2
31	1280153	Spring	バネ	1
32	0068202	Retaining Ring	ストップリング	2
33	1280114	Roller Stay	ローラステイ	1
34	1280117	Roller Plate	ローラプレート	1
35	1280112	Guide Bar	ガイドバー	1
36	1280106	Guide Spring(F Type)	ガイドバネ(Fタイプ)	4
37	1280115	Sub-roller	サブローラ	1
38	1280113	Sub-roller Bar	サブローラバー	1
39	0033024	Retaining Ring	ストップリング	2
40	1280102	Lever Guard	レバーガード	1
41	1280104	Cover Stay	カバーステイ	2