

**SECOND
EDITION**

Union Special[®]
INDUSTRIAL SEWING EQUIPMENT

CATALOG NO. 97N

STYLES

52900BF

52900BG

52900BH

52900BL

52900BM

52900BN

52900BP

52900BR

STREAMLINED

HIGH SPEED

SAFETY STITCH MACHINES

FRONT DIPOSAL OF TRIMMINGS



Vertical text or barcode information along the right edge of the page.

Catalog No. 97 N

LIST OF PARTS

For Styles

52900 BF 52900 BL
52900 BG 52900 BM
52900 BH 52900 BN
 52900 BP
 52900 BR

Second Edition

Copyright © 1960

by

Union Special Corporation
Rights Reserved in All Countries

UNION SPECIAL CORPORATION

INDUSTRIAL SEWING MACHINES

CHICAGO

Printed in U. S. A.

September, 1978

FOREWORD

These latest improved famous UNION SPECIAL "Safety Stitch", Class 52900 machines offer many advantages on seaming-overedging operations on various types of garments such as pants, slacks, ladies' skirts, jackets, bathing suits, beach and bathrobes, kiddies' corduroy overalls, sport shirts, ladies' blouses, street and house dresses, nightgowns, dungarees, ladies' jeans, pedal pushers and similar garments.

New light weight parts and needle bearings make them lighter running and smoother operating. A new light weight presser bar mechanism reduces pressure required to lift the foot.

Increased speed has been made possible by design changes and the new filter type oil return pump, used in conjunction with isolated mounting oil pan base plate, which returns any excess oil to reservoir.

It is our constant aim to furnish carefully prepared information which will enable our customers to secure all possible advantages from the use of UNION SPECIALS. The following pages illustrate and describe the parts for Styles in Class 52900 - front disposal of trimmings.

Union Special representatives will be found in all manufacturing centers, ready to cooperate with you to plan and estimate requirements.

UNION SPECIAL CORPORATION
Engineering Department

IDENTIFICATION OF MACHINE

Each UNION SPECIAL carries a Style number which is stamped in the name plate on the machine, Style numbers are classified as standard and special. Standard Style numbers have one or more letters suffixed, but never contain the letter "Z". Example: "Style 52900 BF". Special Style numbers contain the letter "Z". When only minor changes are made in a standard machine, a "Z" is suffixed to the standard Style number. Example: "Style 52900 BFZ".

The distance between the rows of stitches or between needles is represented by a gauge number measured in 1/64ths of an inch, going from left to right. Thus, 5-8 gauge represents a distance of 5/64 inch from left needle (needle for 401 stitch) to middle or left needle of 602 stitch and 8/64 or 1/8 inch from middle needle to extreme right needle. Similarly, 1-11-12 gauge on tandem needle Style 52900 BP represents a distance of 1/64 of an inch from left row of 401 stitch to right row of 401 stitch, 11/64 of an inch from right row of 401 stitch to left needle of 602 stitch and finally 12/64 or 3/16 of an inch from left needle of 602 stitch to extreme right needle.

APPLICATION OF CATALOG

This catalog applies specifically to the standard Styles of machines as listed herein. It can also be applied with discretion to some Special machines in this Class. Reference to direction such as right, left, front, back, etc., are given from the operator's position while seated at the machine. Operating direction of handwheel is toward the operator.

STYLES OF MACHINES

High Speed Streamlined Flat Bed, Medium and High Throw Machines, Vertical Trimmer, Front Disposal of Trimmings, Light Weight Presser Bar and Needle Bar Driving Mechanism. Three Needles, Left Needle in Rear, Two Loopers, Dual Stitch, Double Locked Stitch on Left, Four Thread Interlock Stitch on Right Unless Otherwise Specified. One Reservoir Enclosed Automatic Lubricating System with Filter Type Oil Return Pump for Main Driving Mechanism, Separate Reservoir for Automatic Lubrication of Spreader Mechanism, Lateral Looper Travel.

52900 BF Medium throw machine for simultaneous seaming and overedging on garment pockets and for similar operations on medium to medium heavy weight material. Seam specification 401 and 602-SSa-2. Type 128 GAS needle. Standard gauge No. 5-8 only. Maximum recommended speed 5000 R.P.M.

52900 BG Medium throw machine for simultaneous seaming and overedging on sport shirts, ladies' blouses, street and house dresses, shoulder pads, coat linings, pillow cases and for similar operations on medium to medium heavy weight material. Seam specification 401 and 602-SSa-2. Type 128 GAS needle. Standard gauges Nos. 5-8, 16-8, 24-8. Maximum recommended speed 5000 R.P.M.

52900 BH Medium throw machine for simultaneous seaming and overedging on the in-seams and out-seams of light and medium weight corduroy pants, wash pants, slacks, ladies' skirts, jackets, bathing suits, beach and bathrobes, kiddies' corduroy overalls, and for similar operations on light to medium weight material. Seam specification 401 and 602-SSa-2. Type 128 GAS needle. Standard gauges Nos. 5-8, 12-12, 16-8. Maximum recommended speed 5000 R.P.M.

STYLES OF MACHINES (Continued)

- 52900 BL Medium throw machine with treadle controlled intermittent differential feed mechanism for setting puff sleeves, shirt backs to yokes, and a variety of operations on street and house dresses, nightgowns, nylon blouses, bathing suits and for similar operations on light to medium weight material. Seam specification 401 and 602-SSa-2. Type 128 GAS needle. Standard gauges Nos. 5-8, 12-12, 16-8. Maximum recommended speed 5000 R. P. M.
- 52900 BM Medium throw machine with top feed mechanism for seaming and inserting a corded welt to furniture slip covers and for similar operations on medium to heavy weight material. Seam specification 401 and 602-SSk-2. Type 128 GAS needle. Standard gauges Nos. 5-8, 12-12. Maximum recommended speed 4000 R. P. M.
- 52900 BN High throw machine for side seaming, shoulder seaming, sleeve setting and closing on sport shirts, play pants, heavy bathrobes, and for similar operations on medium heavy to heavy weight material. Seam specification 401 and 602-SSa-2. Type 147 GS needle. Standard gauges Nos. 5-8, 12-12, 16-8. Maximum recommended speed 5000 R. P. M.
- 52900 BP High throw, four needle, three looper, tandem needle machine for producing two rows of 401 stitching 1/64 inch apart and with a Type 602 overedge stitch. Tandem needles mounted to left and rear of two needles abreast, producing Type 602 stitch. The tandem needle arrangement gives an equivalent of 14 stitches per inch on the 401 stitch as compared to 6 stitches per inch on the 602 overedge stitch. Designed to handle materials made of seersucker, denim, corduroy, twill, drill, etc. For inseaming, side seaming, front seaming, seat seaming on men's work, service and semi-dress pants, dungarees, ladies' jeans, pedal pushers, and for similar operations on medium to heavy weight material. Seam specification 401 and 602-SSa-3. Type 128 GAS needle. Standard gauge No. 1-11-12 only. Maximum recommended speed 4500 R. P. M.
- 52900 BR Same as Style 52900 BH except feed dog has teeth cut 22 per inch and throat plate has .050 inch needle holes, for sewing garments made of durable press material. Seam specification 401 and 602-SSa-2. Type 128 GAS needle. Standard gauges Nos. 5-8 and 12-12. Maximum recommended speed 5000 R. P. M.

NEEDLES

Each needle has a type number and size number. The type number denotes the kind of shank, point, length, groove, finish and other details. The size number denotes the largest diameter of the blade, measured in thousandths of an inch, midway between the shank and the eye, and is stamped in the needle shank. Collectively, the type number and size number is the complete symbol.

To have needle orders promptly and accurately filled, forward a sample needle, the empty package, or description on label. A complete order would read as follows: "1000 Needles, Type 128 GAS, Size 100/040".

The type numbers of the needles recommended for each style of machine covered by this catalog are given in the machine style description. Other needles are available, but the ones indicated are those recommended to produce the most satisfactory results. The type numbers of the recommended needles together with their descriptions, and the sizes available are listed on next page.

NEEDLES (Continued)

| <u>Type No.</u> | <u>Description and Sizes</u> |
|-----------------|---|
| 128 GAS | Short, double groove, struck groove, ball eye, spotted chromium plated - sizes 080/032, 090/036, 100/040, 110/044, 125/049, 140/054, 150/060, 170/067. |
| 147 GS | Long, double groove, struck groove, ball eye, spotted short point, undersize eye and grooves, one step reduction, chromium plated - sizes 080/032, 090/036, 100/040, 110/044, 125/049, 140/054, 150/060, 170/067. |

Selection of the proper needle size should be determined by size of thread used. Thread should pass freely through needle eye in order to produce a good stitch formation.

ORDERING REPAIR PARTS

ILLUSTRATIONS

This catalog has been arranged to simplify ordering repair parts. Exploded views of various sections of the mechanism are shown so that the parts may be seen in their actual position in the machine. On the page opposite the illustration will be found a listing of the parts with their parts numbers, descriptions and the number of pieces required in the particular view being shown.

Numbers in the first column are reference numbers only, and merely indicate the position of that part in the illustration. Reference numbers should never be used in ordering parts. Always use the part number listed in the second column.

Component parts of sub-assemblies which can be furnished for repairs are indicated by indenting their descriptions under the description of the main sub-assembly. Example:

| | | | |
|----|----------|---|---|
| 61 | 29476 LE | Looper Driving Lever Crank Assembly ----- | 1 |
| 62 | 22587 | Screw, upper ----- | 2 |
| 63 | 22729 D | Screw ----- | 1 |
| 64 | 51243 C | Ball Stud Guide ----- | 1 |
| 65 | 22729 D | Screw, lower ----- | 2 |

It will be noted in the above example that the eccentric and bearing are not listed. The reason is that replacement of these parts individually is not recommended, so the complete sub-assembly should be ordered.

In those cases where a part is common to all of the machines covered by this catalog, no specific usage will be mentioned in the description. However, when the parts for the various machines are not the same, (the specific machine style or styles covered on that page will be noted on top of page or) the specific usage will be mentioned in the description and, if necessary, the difference will be shown in the illustration.

At the back of the book will be found a numerical index of all the parts shown in this book. This will facilitate locating the illustration and description when only the part number is known.

IDENTIFYING PARTS

Where the construction permits, each part is stamped with its part number. On some of the smaller parts, and on those where construction does not permit, an identification letter is stamped in to distinguish the part from similar ones.

IDENTIFYING PARTS (Continued)

Part numbers represent the same part, regardless of catalog in which they appear.

IMPORTANT! ON ALL ORDERS, PLEASE INCLUDE PART NAME AND STYLE OF MACHINE FOR WHICH PART IS ORDERED.

USE GENUINE NEEDLES AND REPAIR PARTS

Success in the operation of these machines can be secured only with genuine UNION SPECIAL Needles and Repair Parts as furnished by the Union Special Corporation, its subsidiaries and authorized distributors. They are designed according to the most approved scientific principles, and are made with utmost precision. Maximum efficiency and durability are assured.

Genuine needles are packaged with labels marked *Union Special*[®]. Genuine repair parts are stamped with the Union Special trademark, U S Emblem. Each trademark is your guarantee of the highest quality in materials and workmanship.

TERMS

Prices are net cash and subject to change without notice. All shipments are forwarded f. o. b. shipping point. Parcel Post shipments are insured unless otherwise directed. A charge is made to cover postage and insurance.

OILING AND THREADING

The oil has been drained from the machine before shipping and the reservoir must be filled before beginning to operate. Use a straight mineral oil with a Saybolt viscosity of 90 to 125 seconds at 100° Fahrenheit.

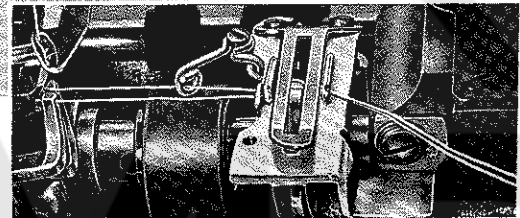
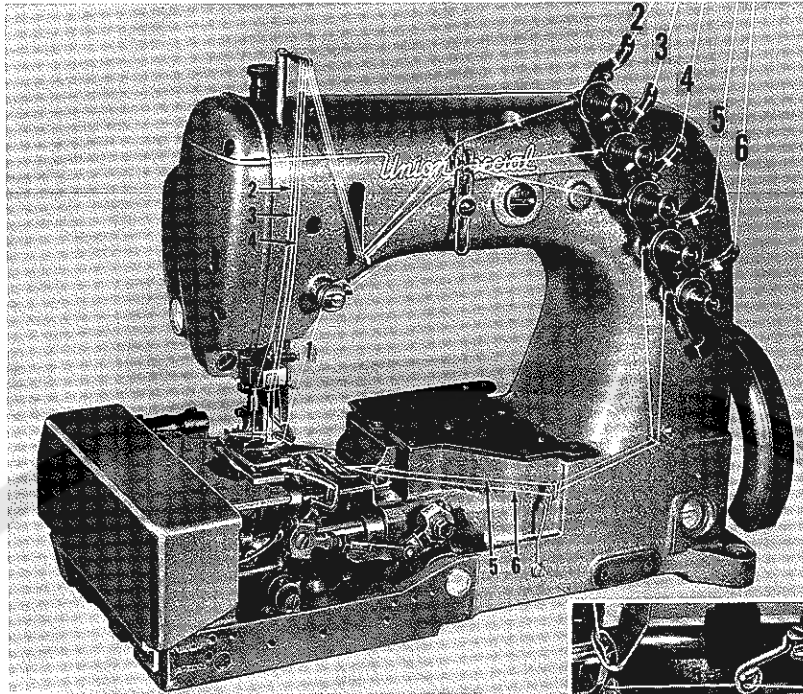
Oil is filled at the spring cap in the top cover and the level is checked at the sight gauge on the front of the machine. The oil level should be maintained between the red lines on the gauge. The capacity of the oil reservoir is 12 ounces.

The machine is automatically lubricated and no oiling other than keeping the main reservoir filled is necessary.

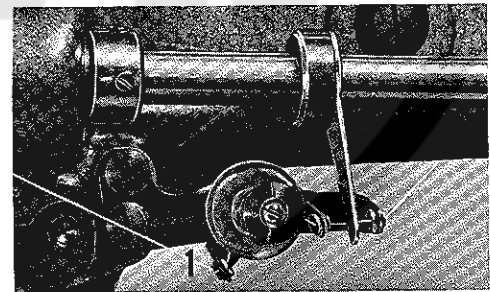
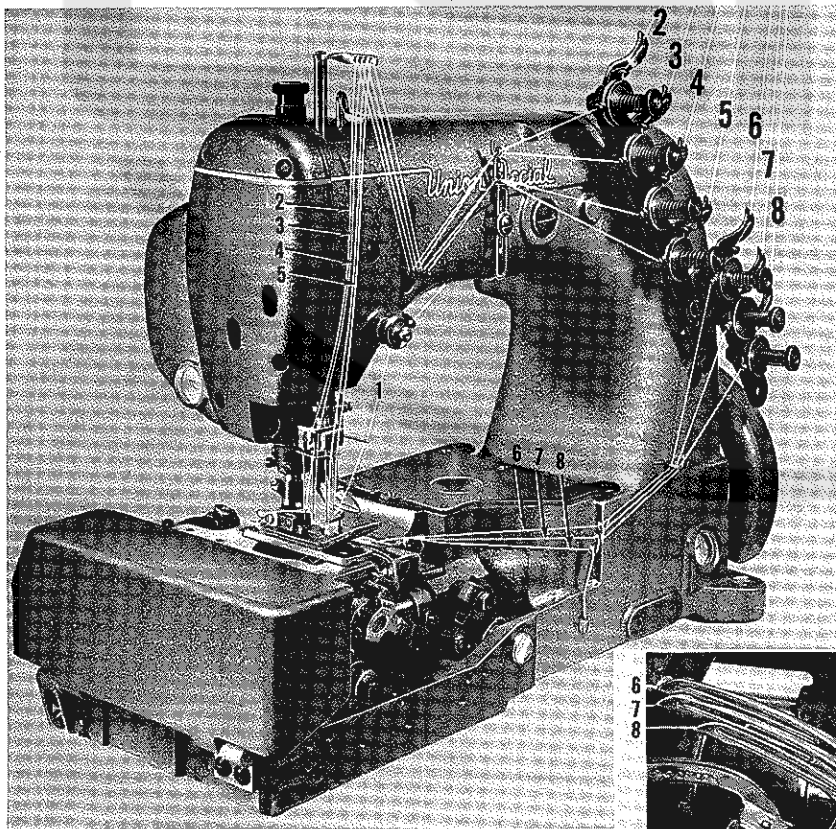
A daily check before the morning start should be made and oil added if required. Oil which has gone through the machine is filtered and pumped back into the main reservoir making too frequent oilings unnecessary. Excessive oil in the main reservoir may be drained at the plug screw in the main frame directly under the handwheel.

On the next page is a picture showing the manner in which the 52900 Styles covered in this catalog are threaded. The spreader and looper threading has been enlarged for clarity.

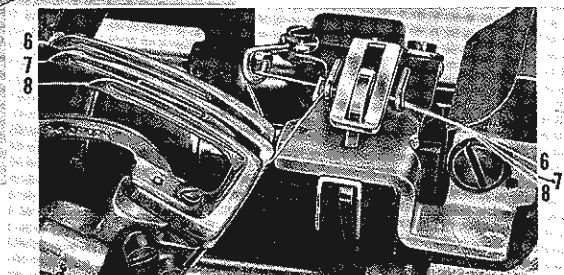
THREADING AND OILING DIAGRAM



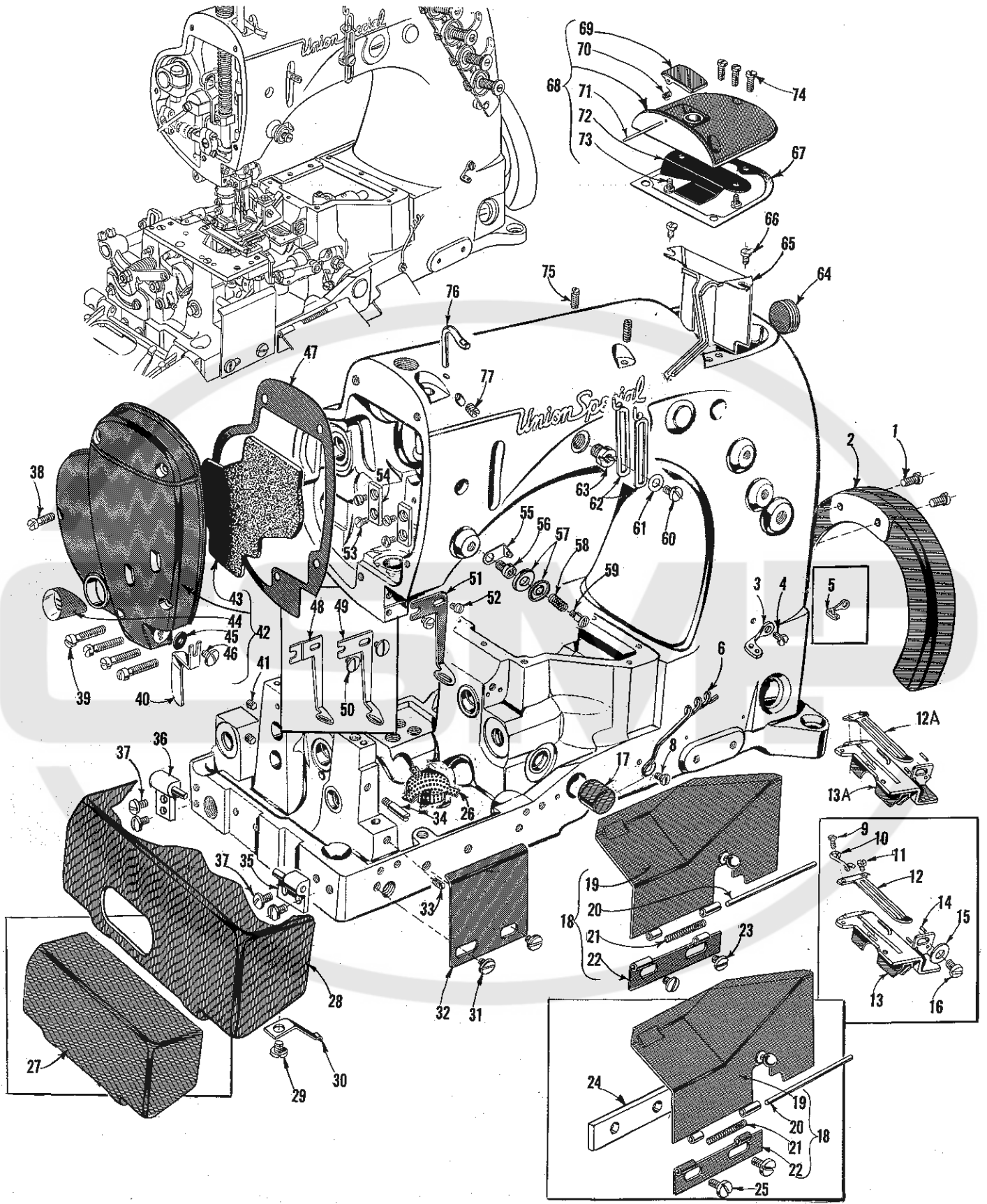
FOR STYLES 52900 BF, BG, BH, BL, BM, BN



FOR ALL STYLES IN CLASS 52900

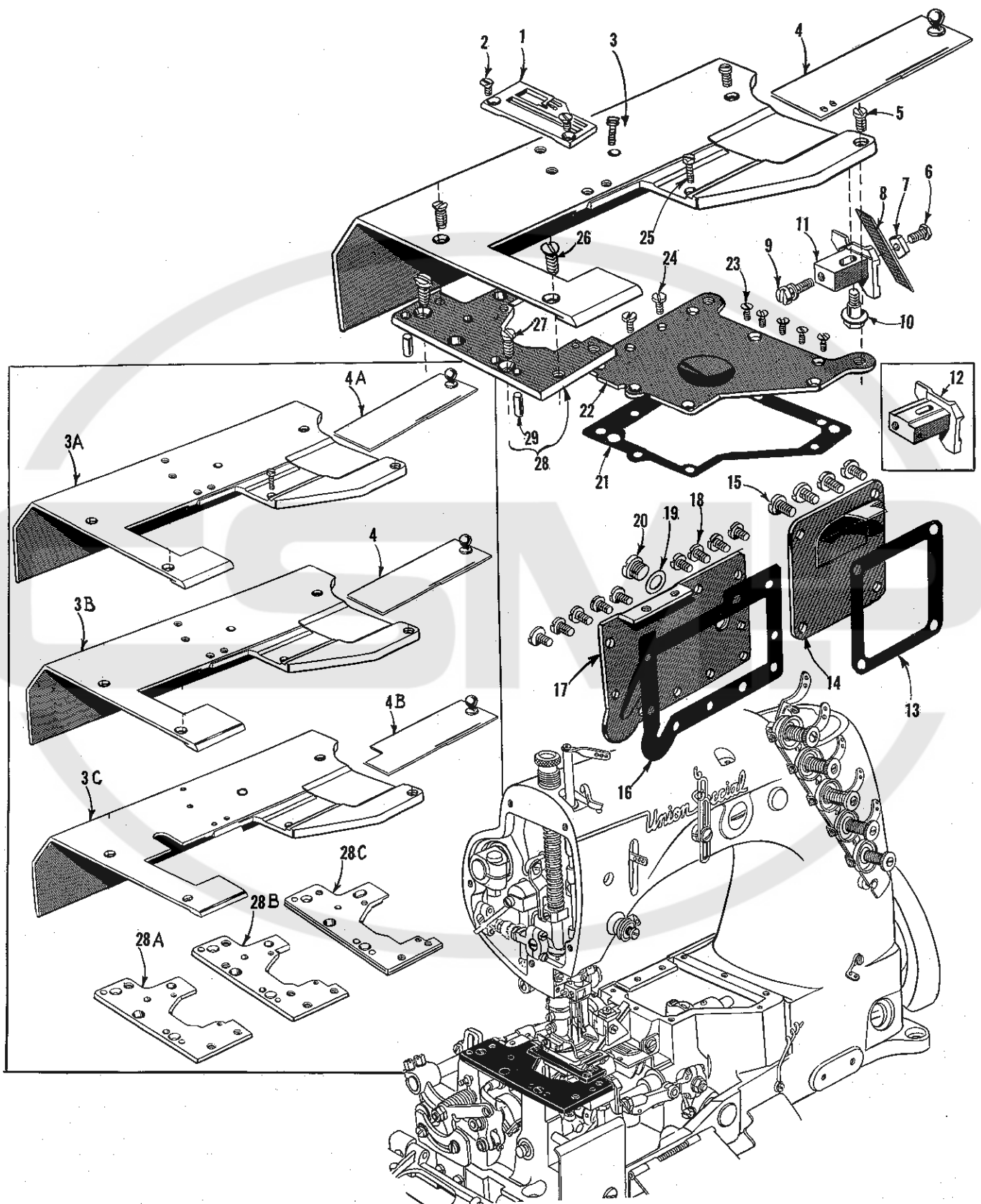


FOR STYLE 52900 BP



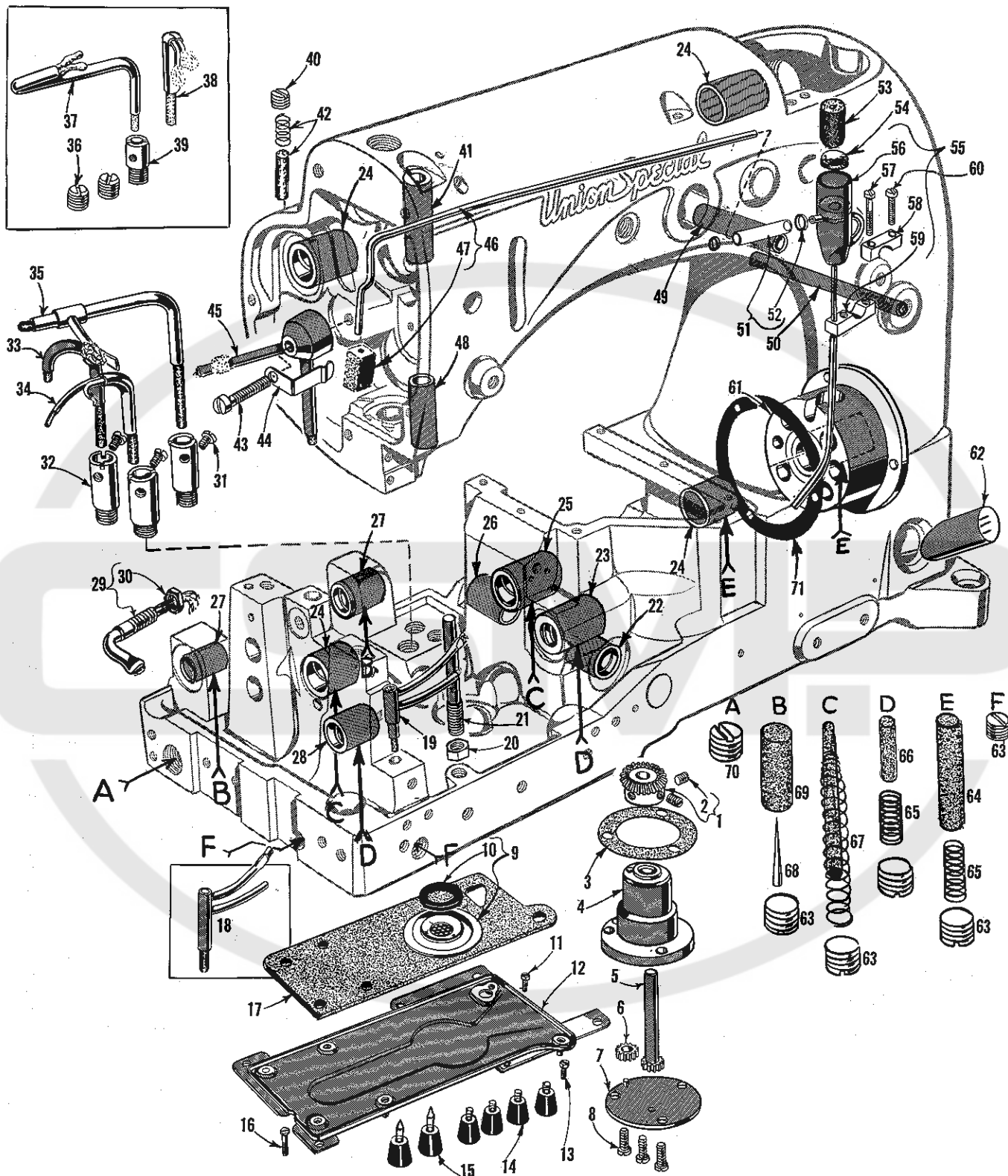
MAIN FRAME, CAST-OFF PLATE, MISCELLANEOUS COVERS AND PLATES

| Ref. No. | Part No. | Description | Amt. Req. |
|----------|-------------|--|-----------|
| 1 | 93 | Screw | 2 |
| 2 | BB21375 AH | Belt Guard | 1 |
| 3 | 158 B | Thread Eyelet, for all Styles except 52900 BP | 1 |
| 4 | 98 A | Screw | 1 |
| 5 | 158 A | Thread Eyelet, for Style 52900 BP | 1 |
| 6 | 52958 G | Frame Thread Eyelet | 1 |
| 8 | 98 A | Screw | 1 |
| 9 | 22768 | Screw | 1 |
| 10 | 52958 | Looper Thread Control Pull-off Wire | 1 |
| 11 | 28 | Screw | 1 |
| 12 | 52904 | Cast-off Wire, for all Styles except 52900 BM | 1 |
| 12A | 52904 A | Cast-off Wire, for Style 52900 BM | 1 |
| 13 | 52957 | Cast-off Plate, for all Styles except 52900 BM | 1 |
| 13A | 52957 A | Cast-off Plate, for Style 52900 BM | 1 |
| 14 | 50-216 Blk. | Dowel Pin | 2 |
| 15 | 21657 E | Washer | 1 |
| 16 | 22528 | Screw | 1 |
| 17 | 52942 Y | Looper Rocker Shaft Synchronizing Stud | 1 |
| 18 | 57978 | Front Cover and Chip Guard Assembly | 1 |
| 19 | 57978 A | Front Cover | 1 |
| 20 | 52978 U | Hinge Pin | 1 |
| 21 | 39158 U | Spring | 1 |
| 22 | 52978 T | Hinge | 1 |
| 23 | 22730 | Screw, for all Styles except 52900 BP | 2 |
| 24 | 52978 W | Chip Guard Spacer, for Style 52900 BP | 1 |
| 25 | 22548 | Screw, for Style 52900 BP | 2 |
| 26 | 51493 BK | Lint Filter Screen | 1 |
| 27 | 52985 | End Cover, for all Styles except 52900 BL | 1 |
| 28 | 52985 A | End Cover, for Style 52900 BL | 1 |
| 29 | 22711 | Screw | 1 |
| 30 | 52885 L | Spring | 1 |
| 31 | 22730 | Screw | 2 |
| 32 | 52978 H | Front Cover, left | 1 |
| 33 | 22560 B | Screw | 1 |
| 34 | 22799 M | Screw | 1 |
| 35 | 57885 | Hinge Bracket, front | 1 |
| 36 | 57885 B | Hinge Bracket, rear | 1 |
| 37 | 22848 | Screw | 4 |
| 38 | 22572 A | Screw | 1 |
| 39 | 294 | Screw | 4 |
| 40 | 52931 G | Presser Foot Toe Lifter, for Style 52900 BL | 1 |
| 41 | 22597 | Screw, for Style 52900 BL | 2 |
| 42 | 52882 R | Head Cover | 1 |
| 43 | 52882 Z | Felt Liner | 1 |
| 44 | 52894 AN | Oil Gauge | 1 |
| 45 | 52882 W | Gasket | 1 |
| 46 | 22542 | Screw | 1 |
| 47 | 52882 S | Gasket | 1 |
| 48 | 52944 S | Spreader Thread Guide, for Style 52900 BN | 1 |
| 49 | 52944 D | Spreader Thread Guide, for Style 52900 BP | 1 |
| 50 | 22542 | Screw, for Style 52900 BP | 2 |
| 51 | 52944 A | Spreader Thread Guide, for Styles 52900 BF, BG, BH, BL, BM, BR | 1 |
| 52 | 90 | Screw, for all Styles except 52900 BP | 2 |
| 53 | 22513 | Screw | 4 |
| 54 | 35731 A | Presser Bar Connection Guide Plate | 2 |
| 55 | 35582 B | Thread Guide | 1 |
| 56 | 22517 C | Spreader Thread Tension Screw, front | 1 |
| 57 | 15438 B | Tension Disc | 2 |
| 58 | 15438 C | Tension Spring, front | 1 |
| 59 | 15438 D | Stud | 1 |
| 60 | 22848 | Screw | 1 |
| 61 | 20 | Washer | 1 |
| 62 | 539 | Eyelet | 2 |
| 63 | 22889 A | Adaptor Plug Screw | 1 |
| 64 | 22539 D | Plug Screw | 1 |
| 65 | 56382 AC | Needle Lever Bearing Oiler and Baffle Plate Assembly | 1 |
| 66 | 90 | Screw | 2 |
| 67 | 52882 P | Gasket | 1 |
| 68 | 52882 AD | Chamber Cover | 1 |
| 69 | 39582 L | Oil Cap | 1 |
| 70 | 52882 AC | Oil Cap Torsion Spring | 1 |
| 71 | 50-789 Blk. | Oil Cap Hinge Pin | 1 |
| 72 | 52882 AA | Drip Plate | 1 |
| 73 | 90 | Screw | 2 |
| 74 | 22541 B | Screw | 3 |
| 75 | 719 | Screw | 2 |
| 76 | 95 | Screw | 1 |
| 77 | 57770 | Pull-off Wire | 1 |



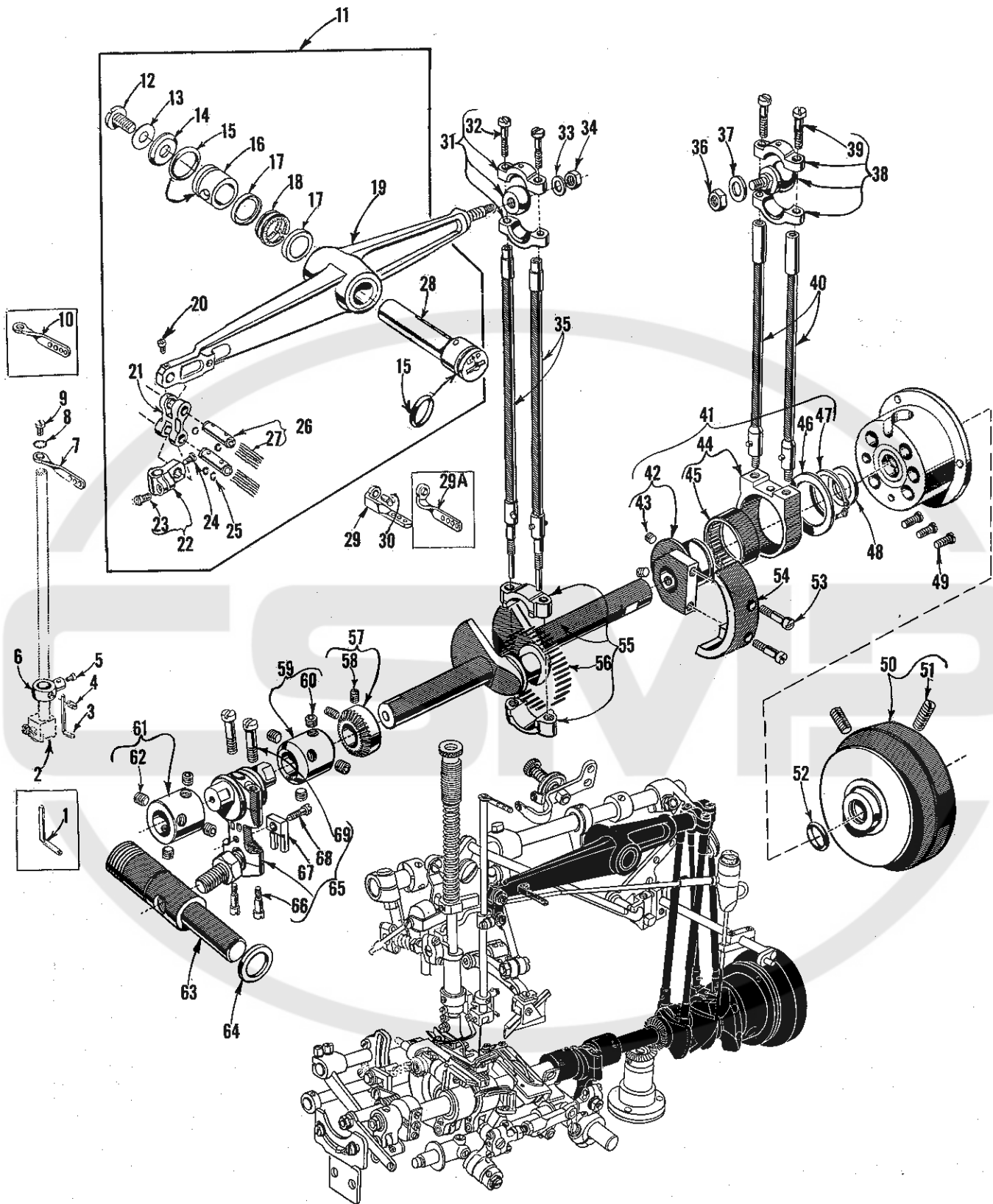
LOWER KNIFE PARTS, CLOTH PLATES AND MISCELLANEOUS COVERS

| <u>Ref. No.</u> | <u>Part No.</u> | <u>Description</u> | <u>Amt. Req.</u> |
|-----------------|-----------------|---|------------------|
| 1 | | Throat Plate (See Pages 37, 39, 41) ----- | 1 |
| 2 | 87 | Screw----- | 2 |
| 3 | 52901 L | Cloth Plate, for Style 52900 BL----- | 1 |
| 3A | 52901 M | Cloth Plate, for Style 52900 BP----- | 1 |
| 3B | 52901 J | Cloth Plate, for Styles 52900 BF, BG, BH, BN, BR ----- | 1 |
| 3C | 52901 K | Cloth Plate, for Style 52900 BM ----- | 1 |
| 4 | 57902 | Cloth Plate Sliding Cover, for Styles 52900 BF, BG, BH, BL, BN, BR ----- | 1 |
| 4A | 52902 C | Cloth Plate Sliding Cover, for Style 52900 BP ----- | 1 |
| 4B | 52902 B | Cloth Plate Sliding Cover, for Style 52900 BM----- | 1 |
| 5 | 22839 C | Screw----- | 2 |
| 6 | 22588 A | Screw----- | 1 |
| 7 | 52950 H | Lower Knife Holder Plate ----- | 1 |
| 8 | 52949 A | Knife, lower----- | 1 |
| 9 | 22568 | Screw,----- | 1 |
| 10 | 35766 | Stud ----- | 1 |
| 11 | 52950 A | Lower Knife Holder Block, for all Styles except 52900 BP----- | 1 |
| 12 | 52950 B | Lower Knife Holder Block, for Style 52900 BP ----- | 1 |
| 13 | 52882 U | Gasket ----- | 1 |
| 14 | 52882 AF | Crank Chamber Cover ----- | 1 |
| 15 | 22548 | Screw,----- | 4 |
| 16 | 52982 E | Gasket ----- | 1 |
| 17 | 52982 D | Oil Reservoir Back Cover----- | 1 |
| 18 | 22848 | Screw----- | 9 |
| 19 | 41394 A | Gasket ----- | 2 |
| 20 | 22733 B | Screw----- | 1 |
| 21 | 51382 A | Gasket ----- | 1 |
| 22 | 52982 F | Oil Reservoir Top Cover----- | 1 |
| 23 | 22524 | Screw----- | 5 |
| 24 | 22585 A | Screw----- | 2 |
| 25 | 22585 R | Screw----- | 2 |
| 26 | 80 | Screw----- | 2 |
| 27 | 22839 | Screw----- | 2 |
| 28 | 52980 C | Throat Plate Support, for Style 52900 BL ----- | 1 |
| 28A | 52980 | Throat Plate Support, for Styles 52900 BF, BG, BH, BN, BR----- | 1 |
| 28B | 52980 A | Throat Plate Support, for Style 52900 BM----- | 1 |
| 28C | 51380 A | Throat Plate Support, for Style 52900 BP ----- | 1 |
| 29 | 51280 J | Dowel Pin ----- | 2 |



MAIN FRAME, BUSHINGS AND MISCELLANEOUS PARTS

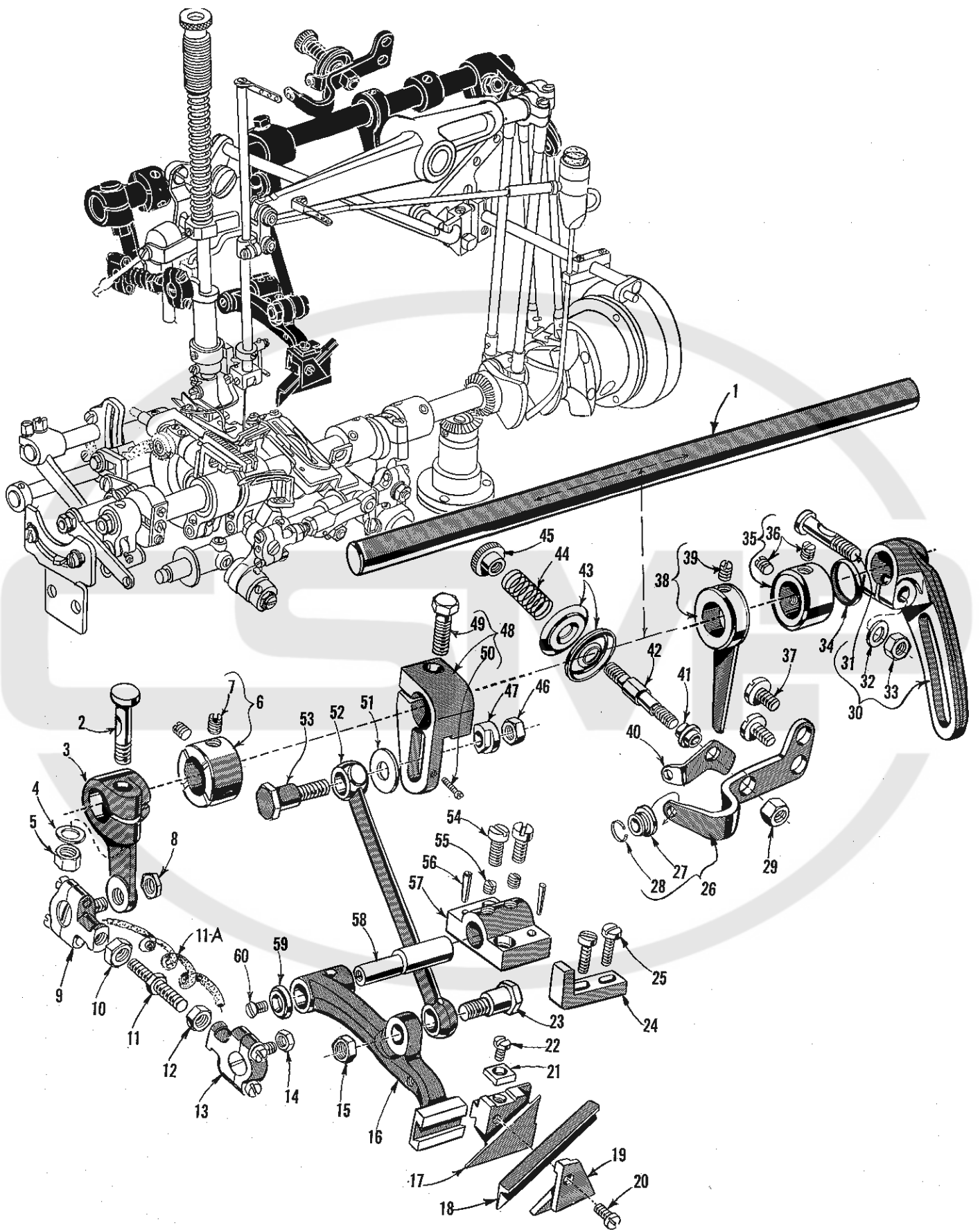
| <u>Ref. No.</u> | <u>Part No.</u> | <u>Description</u> | <u>Amt. Req.</u> |
|-----------------|-----------------|--|------------------|
| 1 | 51493 BQ | Pump Driven Gear | 1 |
| 2 | 531 | Screw | 2 |
| 3 | 643-127 Blk. | Gasket | 1 |
| 4 | 51493 AG | Oil Pump Housing | 1 |
| 5 | 51493 D | Oil Pump Driving Shaft | 1 |
| 6 | 51493 E | Driving Shaft Gear | 2 |
| 7 | 51493 AH | Oil Pump Housing Cover | 1 |
| 8 | 22569 B | Screw | 3 |
| 9 | 51493 BH | Filter Cap Assembly | 1 |
| 10 | 51493 BJ | Washer, sponge rubber | 1 |
| 11 | 22645 H-64 | Screw | 1 |
| 12 | 51493 AZ | Oil Pan Base Plate, for all Styles except 52900 BP | 1 |
| | 51493 BB | Oil Pan Base Plate, for Style 52900 BP | 1 |
| 13 | 22823 A | Screw | 1 |
| 14 | 39595 | Mounting Isolators | 4 |
| 15 | 51295 B | Mounting Isolators | 2 |
| 16 | 22823 B | Screw | 1 |
| 17 | 51493 BG | Base Plate Oil Pad | 1 |
| 18 | 52994 AG | Oil Tube, for looper rocker and left ball joint, for Style 52900 BP | 1 |
| 19 | 52894 AK | Oil Tube, for looper rocker and left ball joint, for all Styles except 52900 BP | 1 |
| 20 | 258 | Nut | 1 |
| 21 | 15455 | Lower Knife Holder Pin Support | 1 |
| 22 | 52942 W | Looper Drive Lever Shaft Bushing, front | 1 |
| 23 | 52944 U | Looper Rocker Shaft Bushing, right | 1 |
| 24 | 52890 C | Main Shaft Bushing, left, inner right, and Rocker Shaft Bushing, left, upper right | 4 |
| 25 | 51290 T | Main Shaft Bushing, middle | 1 |
| 26 | 52942 X | Looper Drive Lever Shaft Bushing, rear | 1 |
| 27 | 52836 P | Feed Rocker Shaft Bushing | 2 |
| 28 | 52836 R | Looper Rock Shaft Bushing, left | 1 |
| 29 | 660-136 | Oil Tube, for feed crank link | 1 |
| 30 | 258 A | Nut | 1 |
| 31 | 90 | Screw, for Styles 52900 BF, BG, BH, BN, BP, BR | 1 |
| | 90 | Screw, for Style 52900 BL | 3 |
| | 90 | Screw, for Style 52900 BM | 2 |
| 32 | 52894 AB | Oil Tube Holder, for Styles 52900 BF, BG, BH, BM, BN, BP, BR | 1 |
| | 52894 AB | Oil Tube Holder, for Style 52900 BL | 3 |
| 33 | 52894 AD | Oil Tube, for differential feed bar shaft, for Style 52900 BL | 1 |
| 34 | 52794 G | Oil Tube, for feed lift and looper avoid eccentric, for all Styles except 52900 BM | 1 |
| 35 | 52894 AE | Oil Tube, for differential feed bar guide, for Style 52900 BL | 1 |
| 36 | 22571 B | Plug Screw, for Styles 52900 BF, BG, BH, BN, BP, BR | 2 |
| | 22571 B | Plug Screw, for Style 52900 BM | 1 |
| 37 | 52994 AA | Oil Tube, for feed lift, for Style 52900 BM | 1 |
| 38 | 52994 AC | Oil Tube, for upper feed lift and looper avoid, for Style 52900 BM | 1 |
| 39 | 52994 AD | Oil Tube Holder, for Style 52900 BM | 1 |
| 40 | 22706 A | Plug Screw | 1 |
| 41 | 51254 C | Needle Bar Bushing, upper | 1 |
| 42 | 666-99 | Oil Wick, for spreader rocker shaft | 1 |
| 43 | 294 | Screw | 1 |
| 44 | 52994 V | Oil Siphon Clamp | 1 |
| 45 | 52894 K | Oil Tube Assembly | 1 |
| 46 | 52994 U | Oil Siphon Tube | 1 |
| 47 | 666-214 | Felt Lint Filter | 1 |
| 48 | 52954 B | Needle Bar Bushing, lower | 1 |
| 49 | 52883 R | Presser Foot Lifter Lever Bushing | 1 |
| 50 | 21657 X | Tension Release Lever Shaft Bushing | 1 |
| 51 | 51294 Y | Oil Tube Connection | 1 |
| 52 | 21212 | Oil Siphon Connection Locking Ring | 2 |
| 53 | 666-201 | Felt Plug | 1 |
| 54 | 666-209 | Felt Plug | 1 |
| 55 | 51294 U | Oil Siphon Assembly | 1 |
| 56 | 643-263 Blk. | Siphon | 1 |
| 57 | 22729 B | Screw | 1 |
| 58 | 51294 K | Clamp, upper | 1 |
| 59 | 28-182 Blk. | Clamp, lower | 1 |
| 60 | 22729 A | Screw | 1 |
| 61 | 52891 B | Crankshaft Bushing Housing, including bushing | 1 |
| 62 | 50-648 Blk. | Lucite Oil Gauge | 1 |
| 63 | 22571 A | Plug Screw | 18 |
| 64 | 666-114 | Oil Wick, for right main shaft bearing | 2 |
| 65 | 35178 D | Spring | 4 |
| 66 | 666-65 | Oil Wick, for looper rocker shaft | 2 |
| 67 | 666-118 | Oil Wick, for left main shaft bearing | 2 |
| 68 | 666-179 | Wedge Pin | 2 |
| 69 | 666-111 | Oil Wick, for feed rocker shaft | 2 |
| 70 | 22539 H | Plug Screw | 1 |
| 71 | 56390 E | Gasket, for crankshaft bearing housing | 1 |



CRANKSHAFT, NEEDLE LEVER AND LOOPER DRIVING PARTS

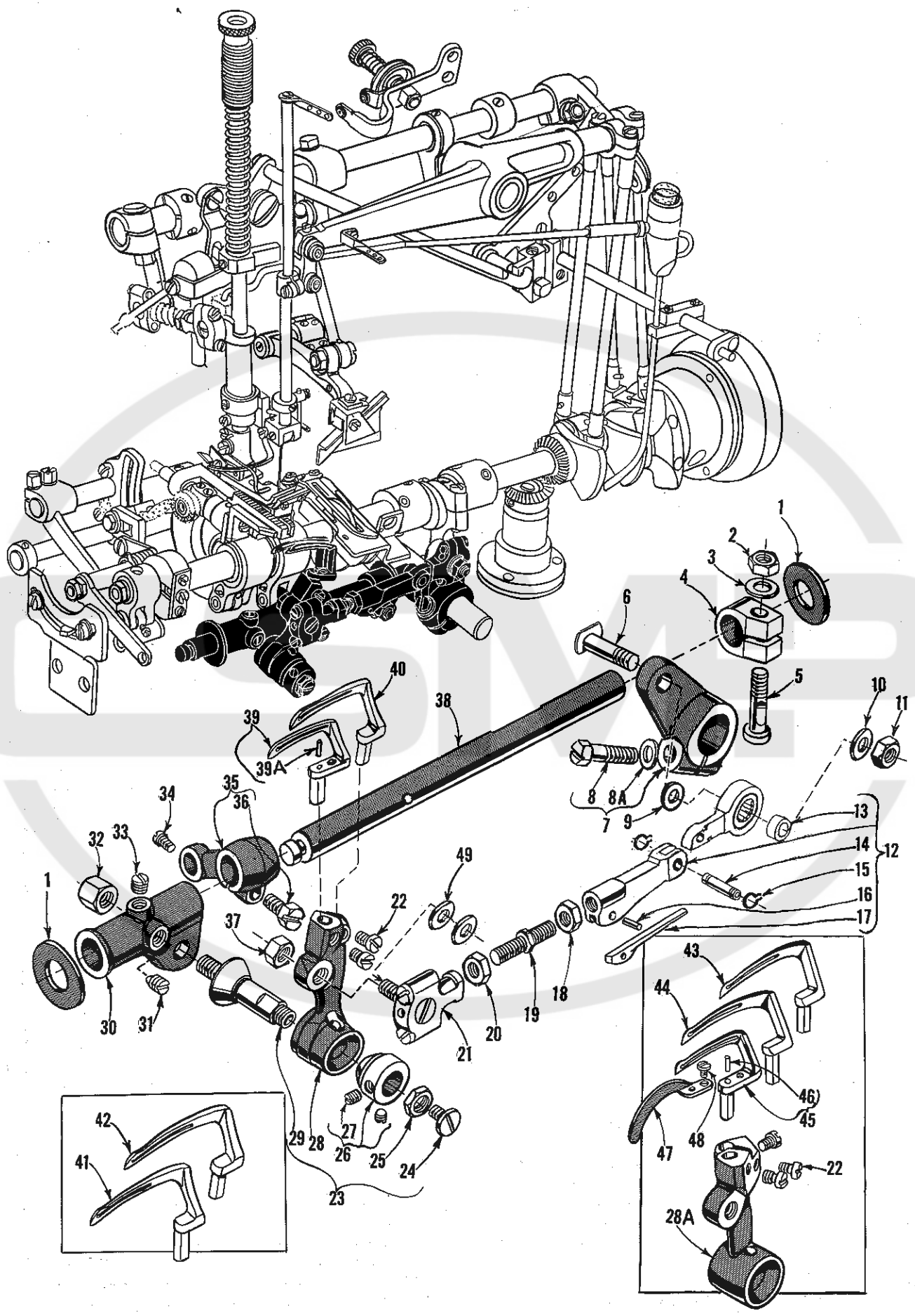
| <u>Ref. No.</u> | <u>Part No.</u> | <u>Description</u> | <u>Amt. Req.</u> |
|-----------------|-----------------|---|------------------|
| 1 | 52944 C | Thread Eyelet, for Style 52900 BP | 1 |
| 2 | | Needle Bar Assembly (See Page 35) | 1 |
| 3 | 41076 D | Thread Eyelet, for Styles 52900 BF, BG, BH, BL, BM, BN, BR | 1 |
| 4 | 22743 | Screw | 1 |
| 5 | 73 A | Screw | 1 |
| 6 | 52842 A | Needle Bar Finger Thread Eyelet Support | 1 |
| 7 | 56958 A | Needle Bar Thread Eyelet, for Styles 52900 BF, BG, BH, BL, BM, BN, BR | 1 |
| 8 | 652 C-9 | Needle Bar Eyelet Lock Washer | 1 |
| 9 | 22768 | Screw | 1 |
| 10 | 54158 A | Needle Bar Thread Eyelet, for Style 52900 BP | 1 |
| 11 | 29348 AF | Needle Lever Assembly | 1 |
| 12 | 22586 R | Screw | 1 |
| 13 | 51250 F | Gasket | 1 |
| 14 | 51250 D | Washer | 1 |
| *15 | 660-212 | Oil Seal Ring | 2 |
| 16 | 56350 E | Needle Lever Thrust Collar | 1 |
| 17 | 56350 F | Thrust Washer | 2 |
| 18 | 660-614 | Temper Load Ring | 1 |
| 19 | 56315 A | Needle Lever | 1 |
| 20 | 77 | Screw | 1 |
| 21 | 56354 D | Needle Bar Link | 1 |
| 22 | 51254 K | Needle Bar Connection | 1 |
| 23 | 22562 A | Screw | 1 |
| 24 | 22564 | Screw | 1 |
| 25 | 660-215 | Retaining Ring | 4 |
| 26 | 52336 A | Link Pin | 2 |
| 27 | WO-3 | Columbia Yarn, 6 strands | - |
| 28 | 56350 D | Needle Lever Stud | 1 |
| 29 | 56958 | Needle Lever Eyelet, for Styles 52900 BF, BG, BH, BL, BM, BN, BR | 1 |
| 29A | 54158 | Needle Lever Eyelet, for Style 52900 BP | 1 |
| 30 | 22768 | Screw | 1 |
| 31 | 29066 R | Needle Lever Connecting Rod and Upper Bearing Assembly | 1 |
| 32 | 22559 G | Screw | 2 |
| 33 | 51216 N | Washer | 1 |
| | 51216 P | Nut | 1 |
| 35 | 51216 G | Needle Lever Connecting Rod | 2 |
| 36 | 18 | Nut | 1 |
| 37 | HA20 A | Washer | 1 |
| 38 | 52952 B | Spreader Connecting Rod Ball Joint, upper | 1 |
| 39 | 22559 G | Screw | 2 |
| 40 | 52916 | Connecting Rod | 2 |
| 41 | 29126 CR | Spreader Drive Eccentric Assembly | 1 |
| 42 | 52951 | Spreader Driving Eccentric, .382 inch throw | 1 |
| 43 | 95 | Screw | 2 |
| 44 | 52951 A | Connecting Rod Bearing | 1 |
| 45 | 660-244 | Needle Bearing | 1 |
| 46 | 52951 B | Retaining Washer | 1 |
| 47 | 660-246 | Tru-Arc Ring | 1 |
| 48 | 52951 C | Spacing Washer | 1 |
| 49 | 22569 B | Screw | 3 |
| 50 | 52921 B | Pulley | 1 |
| 51 | 22894 G | Screw | 2 |
| 52 | 660-202 | Oil Seal Ring | 1 |
| 53 | 22587 H | Screw | 2 |
| 54 | 52947 A | Counterweight | 1 |
| 55 | 29476 HW | Crankshaft Assembly, for Styles 52900 BN, BP, .990 inch throw | 1 |
| | 29476 HL | Crankshaft Assembly, for Styles 52900 BF, BG, BH, BL, BM, BR, .910 inch throw | 1 |
| 56 | 51216 M | Needle Bearing | 28 |
| 57 | 51493 BP | Pump Driving Gear | 1 |
| 58 | 22560 B | Screw | 2 |
| 59 | 52943 L | Collar | 1 |
| 60 | 22894 X | Screw | 4 |
| 61 | 56343 D | Collar | 1 |
| 62 | 22894 X | Screw | 4 |
| 63 | 52942 A | Looper Drive Lever Rocker Shaft | 1 |
| 64 | 52951 C | Spacing Washer | 1 |
| 65 | 29476 LE | Looper Driving Lever Crank Assembly | 1 |
| 66 | 22729 D | Screw, lower | 2 |
| 67 | 51243 C | Ball Stud Guide | 1 |
| 68 | 22729 D | Screw | 1 |
| 69 | 22587 | Screw, upper | 2 |

* Det. No. 15 is not a component of part No. 29348 AF needle lever assembly.



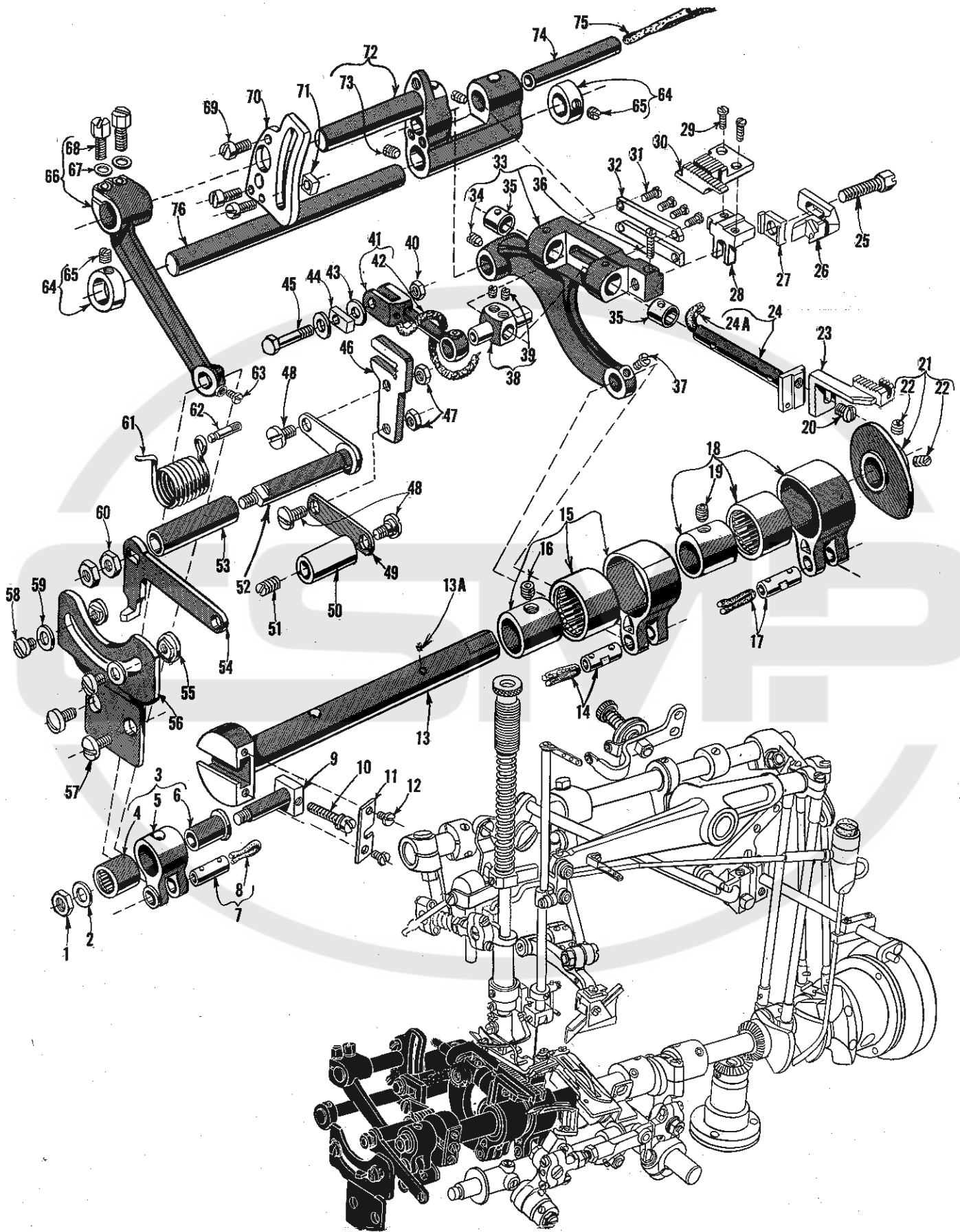
UPPER KNIFE AND SPREADER DRIVE MECHANISM

| <u>Ref. No.</u> | <u>Part No.</u> | <u>Description</u> | <u>Amt. Req.</u> |
|-----------------|-----------------|--|------------------|
| 1 | 52849 | Spreader Rocker Shaft ----- | 1 |
| 2 | 55235 D | Screw ----- | 1 |
| 3 | 52849 B | Rocker Shaft Arm ----- | 1 |
| 4 | 6042 A | Washer----- | 1 |
| 5 | 55235 E | Nut ----- | 1 |
| 6 | 51147 | Collar----- | 1 |
| 7 | 95 | Screw----- | 2 |
| 8 | 15037 A | Nut ----- | 1 |
| 9 | 52848 C | Spreader Connecting Rod Ball Joint, rear----- | 1 |
| 10 | 269 | Nut, left thread ----- | 1 |
| 11 | 51240 D | Spreader Connecting Rod ----- | 1 |
| 11A | CL21 | Oil Wick----- | 1 |
| 12 | 18 | Nut, right thread ----- | 1 |
| 13 | 52848 B | Spreader Connecting Rod Ball Joint, front----- | 1 |
| 14 | 12934 A | Nut ----- | 1 |
| 15 | 258 | Nut ----- | 1 |
| 16 | 52973 X | Upper Knife Lever----- | 1 |
| 17 | 52973 Z | Knife Holder Block ----- | 1 |
| 18 | 52970 E | Knife, upper ----- | 1 |
| 19 | 52973 T | Knife Clamp, upper----- | 1 |
| 20 | 97 | Screw ----- | 1 |
| 21 | 52973 S | Knife Holder Block Clamp ----- | 1 |
| 22 | 90 | Screw ----- | 1 |
| 23 | 22857 B | Screw ----- | 1 |
| 24 | 52973 Q | Upper Knife Lever Thrust Bracket ----- | 1 |
| 25 | 22596 | Screw ----- | 2 |
| 26 | 52855 A | Spreader Thread Pull-Off Eyelet ----- | 1 |
| 27 | 668-25 | Steel Eyelet ----- | 1 |
| 28 | 668-28 | Locking Ring ----- | 1 |
| 29 | 43266 | Nut ----- | 1 |
| 30 | 52952 C | Spreader Thread Rock Shaft Lever ----- | 1 |
| 31 | 55235 D | Screw----- | 1 |
| 32 | 6042 A | Washer ----- | 1 |
| 33 | 55235 E | Nut ----- | 1 |
| 34 | 660-202 | Oil Ring ----- | 1 |
| 35 | 52849 C | Spreader Rocker Shaft Oil Seal Collar ----- | 1 |
| 36 | 95 | Screw----- | 2 |
| 37 | 22872 | Screw ----- | 2 |
| 38 | 52855 G | Spreader Thread Pull-Off Arm----- | 1 |
| 39 | 95 | Screw----- | 1 |
| 40 | 51292 D | Tension Thread Eyelet ----- | 1 |
| 41 | 51292 A | Tension Post Ferrule----- | 1 |
| 42 | 51292 | Spreader Thread Tension Post ----- | 1 |
| 43 | 109 | Spreader Thread Tension Disc ----- | 2 |
| 44 | 51292 F-5 | Tension Spring, spreader ----- | 1 |
| 45 | 51292 C | Tension Nut ----- | 1 |
| 46 | 258 | Nut ----- | 1 |
| 47 | 52973 L | Driving Lever Link Adjusting Nut ----- | 1 |
| 48 | 52973 U | Upper Knife Driving Lever ----- | 1 |
| 49 | 22811 B | Screw----- | 1 |
| 50 | 22738 D | Screw----- | 1 |
| 51 | 53636 C | Washer----- | 1 |
| 52 | 52973 K | Driving Lever Link ----- | 1 |
| 53 | 22857 B | Screw ----- | 1 |
| 54 | 22517 | Screw ----- | 2 |
| 55 | 22580 | Screw ----- | 2 |
| 56 | 60077 K | Pin ----- | 2 |
| 57 | 52973 W | Upper Knife Lever Stud Support Bracket ----- | 1 |
| 58 | 52973 V | Upper Knife Lever Stud ----- | 1 |
| 59 | 129 | Washer----- | 1 |
| 60 | 22526 | Screw ----- | 1 |



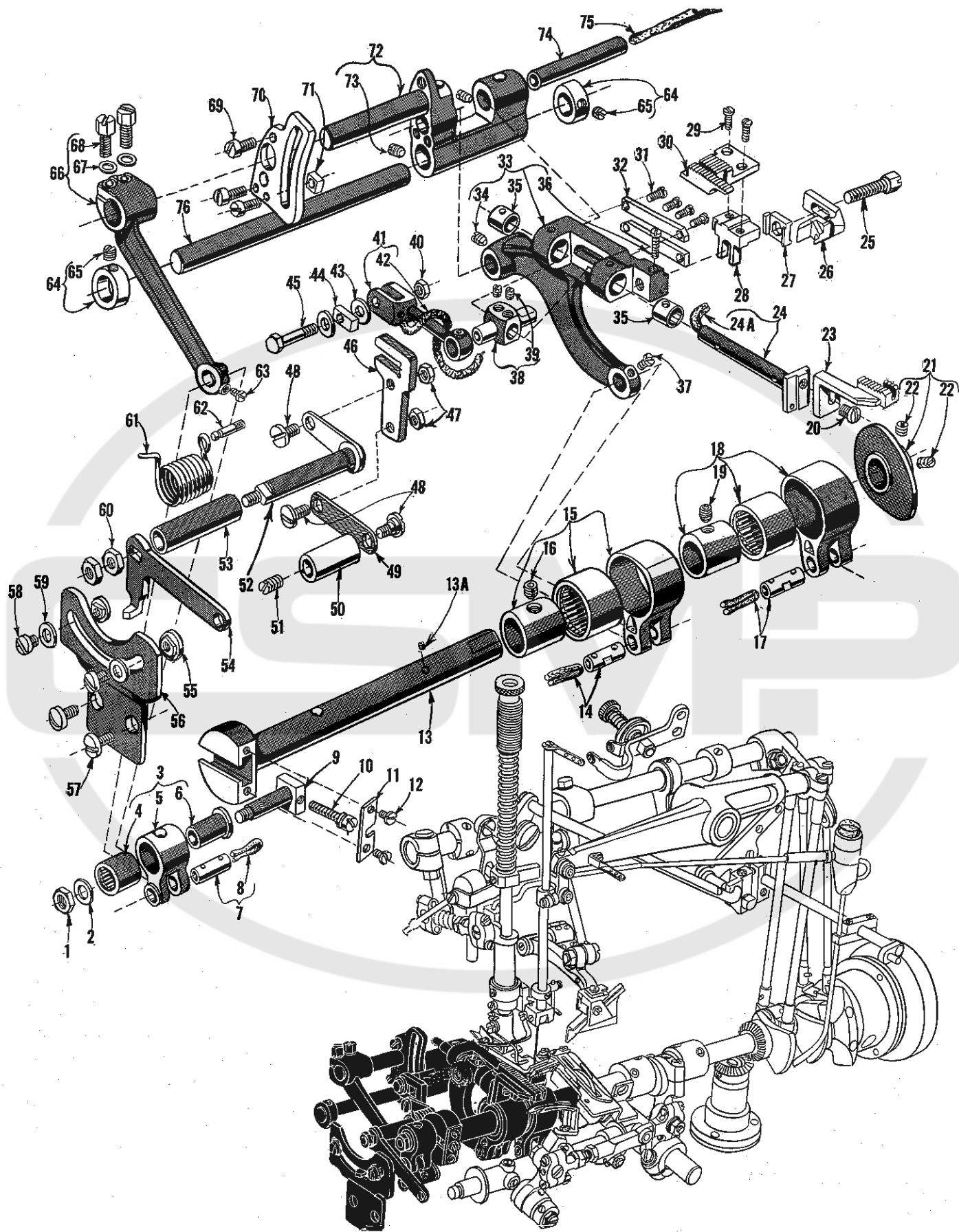
LOOPER ROCKER AND CONNECTING ROD PARTS

| Ref. No. | Part No. | Description | Amt. Req. |
|----------|-------------|--|-------------|
| 1 | 51244 L | Thrust Washer----- | 2 |
| 2 | 18 | Nut----- | 1 |
| 3 | 51216 N | Washer----- | 1 |
| 4 | 51244 N | Looper Rocker Shaft Collar----- | 1 |
| 5 | 55244 G | Locking Stud----- | 1 |
| 6 | 52942 R | Looper Lever Stud----- | 1 |
| 7 | 52942 P | Looper Drive Lever----- | 1 |
| 8 | 22882 A | Screw----- | 1 |
| 8A | 51242 M | Washer----- | 1 |
| 9 | 41355 U-4 | Shim, .004 inch thick----- | as required |
| | 41355 U-5 | Shim, .005 inch thick----- | as required |
| | 41355 U-6 | Shim, .006 inch thick----- | as required |
| | 41355 U-7 | Shim, .007 inch thick----- | as required |
| | 41355 U-8 | Shim, .008 inch thick----- | as required |
| | 41355 U-9 | Shim, .009 inch thick----- | as required |
| 10 | 20 | Washer----- | 1 |
| 11 | 18 | Nut----- | 1 |
| 12 | 56341 M | Looper Connecting Rod Section and Ball Joint Assembly, right----- | 1 |
| 13 | 56341 F | Ferrule----- | 1 |
| 14 | 56341 E | Hinge Pin----- | 1 |
| 15 | 660-310 | Truarc Retaining Ring----- | 2 |
| 16 | 50-458 Blk. | Spring Pin----- | 1 |
| 17 | 56341 G | Spring----- | 1 |
| 18 | 18 | Nut, right thread----- | 1 |
| 19 | 51240 E | Looper Connecting Rod----- | 1 |
| 20 | 269 | Nut, left thread----- | 1 |
| 21 | 52841 A | Looper Connecting Rod Ball Joint, left----- | 1 |
| 22 | 73 | Looper Set Screw, for Style 52900 BP----- | 3 |
| - | 73 | Looper Set Screw, for all Styles except 52900 BP----- | 2 |
| 23 | 29192 G | Looper Rocker Assembly, for Styles 52900 BF, BG, BH, BM, BN, BR----- | 1 |
| - | 29192 S | Looper Rocker Assembly, for Style 52900 BP----- | 1 |
| - | 29192 U | Looper Rocker Assembly, for Style 52900 BL----- | 1 |
| 24 | 22829 | Lock Nut Screw----- | 1 |
| 25 | 258 A | Lock Nut----- | 1 |
| 26 | 15465 F | Looper Rocker Cone----- | 1 |
| 27 | 88 | Set Screw----- | 2 |
| 28 | 52913 | Looper Rocker, for Styles 52900 BF, BG, BH, BM, BN, BR----- | 1 |
| - | 73 | Screw, for looper----- | 2 |
| - | 52913 B | Looper Rocker, for Style 52900 BL----- | 1 |
| 28A | 52913 B | Looper Rocker, for Style 52900 BP----- | 1 |
| 29 | 51745 | Looper Rocker Cone Stud----- | 1 |
| 30 | 51244 | Looper Rocker Frame----- | 1 |
| 31 | 96 | Spot Screw----- | 1 |
| 32 | 51246 | Looper Rocker Stud Nut----- | 1 |
| 33 | 98 | Set Screw----- | 1 |
| 34 | 22768 | Screw----- | 1 |
| 35 | 51244 B | Looper Rocker Shaft Arm----- | 1 |
| 36 | 22519 H | Screw----- | 1 |
| 37 | 18 | Nut----- | 1 |
| 38 | 51144 | Looper Rocker Shaft----- | 1 |
| 39 | 52808 E | Looper, front, for all Styles except 52900 BP----- | 1 |
| 39A | 1740 | Pin----- | 1 |
| 40 | 52909 A | Looper, back, for No. 5-8 gauge, Styles 52900 BF, BG, BH, BL, BM, BN, BR----- | 1 |
| 41 | 52909 E-16 | Looper, back, for Nos. 12-12 and 16-8 gauges, Styles 52900 BG, BH, BL, BM, BN, BR----- | 1 |
| 42 | 52909 B-24 | Looper, back, for No. 24-8 gauge, Style 52900 BG----- | 1 |
| 43 | 52909 D | Looper, back, for Style 52900 BP----- | 1 |
| 44 | 52908 F-1 | Looper, middle, for Style 52900 BP----- | 1 |
| 45 | 52908 D | Looper, front, for Style 52900 BP----- | 1 |
| 46 | 1740 | Pin----- | 1 |
| 47 | 52910 | Looper Needle Guard, for Style 52900 BP----- | 1 |
| 48 | 73 A | Screw----- | 1 |
| 49 | 20 | Washer----- | 2 |



FOR STYLE 52900 BL ONLY
MAIN SHAFT AND DIFFERENTIAL FEED MECHANISM

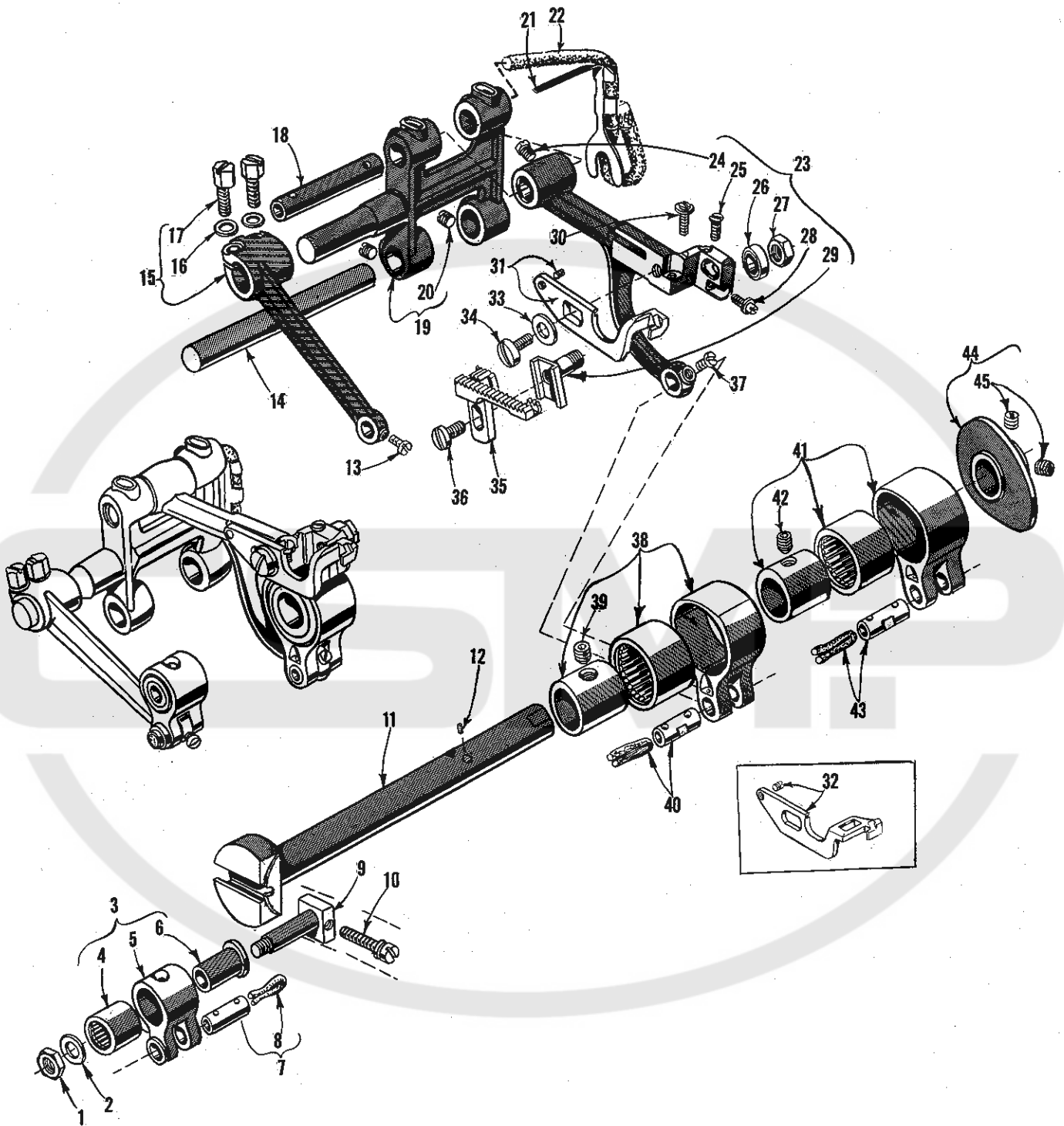
| Ref. No. | Part No. | Description | Amt. Req. |
|-------------|-------------|--|--------------|
| 1 | 269 | Nut, left thread----- | 1 |
| 2 | 20 | Washer----- | 1 |
| 3 | 51236 E | Feed Crank Link Assembly----- | 1 |
| 4 | 660-169 | Needle Bearing----- | 1 |
| 5 | 51236 D | Feed Crank Link----- | 1 |
| 6 | 51236 F | Feed Crank Link Ferrule----- | 1 |
| 7 | 51054 | Link Pin----- | 1 |
| 8 | 666-149 | Oil Wick----- | 1 |
| 9 | 51236 G | Feed Crank Stud----- | 1 |
| 10 | 82 | Stitch Regulating Screw----- | 1 |
| 11 | 51236 B | Feed Crank Stud Cap----- | 1 |
| 12 | 22768 | Screw----- | 2 |
| 13 | 52822 B | Main Shaft----- | 1 |
| 13A | 22801 | Screw----- | 1 |
| 14 | 51236 A | Link Pin----- | 1 |
| 15 | 29476 DX | Feed Link Eccentric Assembly----- | 1 |
| 16 | 22894 D | Screw----- | 1 |
| 17 | 51236 A | Link Pin----- | 1 |
| 18 | 29476 DX | Looper Avoid Eccentric Assembly----- | 1 |
| 19 | 22894 D | Screw----- | 1 |
| 20 | 90 | Screw----- | 1 |
| 21 | 52923 C | Take-up----- | 1 |
| 22 | 22580 | Set Screw----- | 2 |
| 23 | | Differential Feed Dog (See Page 37)----- | 1 |
| 24 | 52834 H | Differential Feed Bar----- | 1 |
| 24A | CL21 | Oil Wick----- | 1 |
| 25 | 22519 J | Screw, for differential feed dog holder----- | 1 |
| 26 | 52925 C | Needle Guard----- | 1 |
| 27 | 52925 D | Needle Guard Holder----- | 1 |
| 28 | 52953 A | Feed Dog Holder----- | 1 |
| 29 | 22593 | Screw----- | 2 |
| 30 | | Main Feed Dog (See Page 37)----- | 1 |
| 31 | 22593 | Screw----- | 4 |
| 32 | 39237 D | Differential Feed Bar Guide Plate----- | 2 |
| 33 | 52834 | Main Feed Bar----- | 1 |
| 34 | 22560 B | Screw----- | 1 |
| 35 | 39237 G | Bushing----- | 2 |
| 36 | 22747 | Feed Dog Height Adjusting Screw----- | 1 |
| 37 | 77 | Screw----- | 1 |
| 38 | 39237 | Differential Feed Bar Guide----- | 1 |
| 39 | 22565 C | Screw----- | 2 |
| 40 | 907 | Nut----- | 1 |
| 41 | 52835 V | Differential Feed Bar Driving Link----- | 1 |
| 42 | CL21 | Oil Wick----- | 1 |
| 43 | 51225 W | Washer----- | 2 |
| 44 | 52835 S | Differential Feed Fork Block----- | 1 |
| 45 | 22868 A | Screw----- | 1 |
| 46 | to 76 | See following page | |



FOR STYLE 52900 BL ONLY

DIFFERENTIAL FEED MECHANISM PARTS

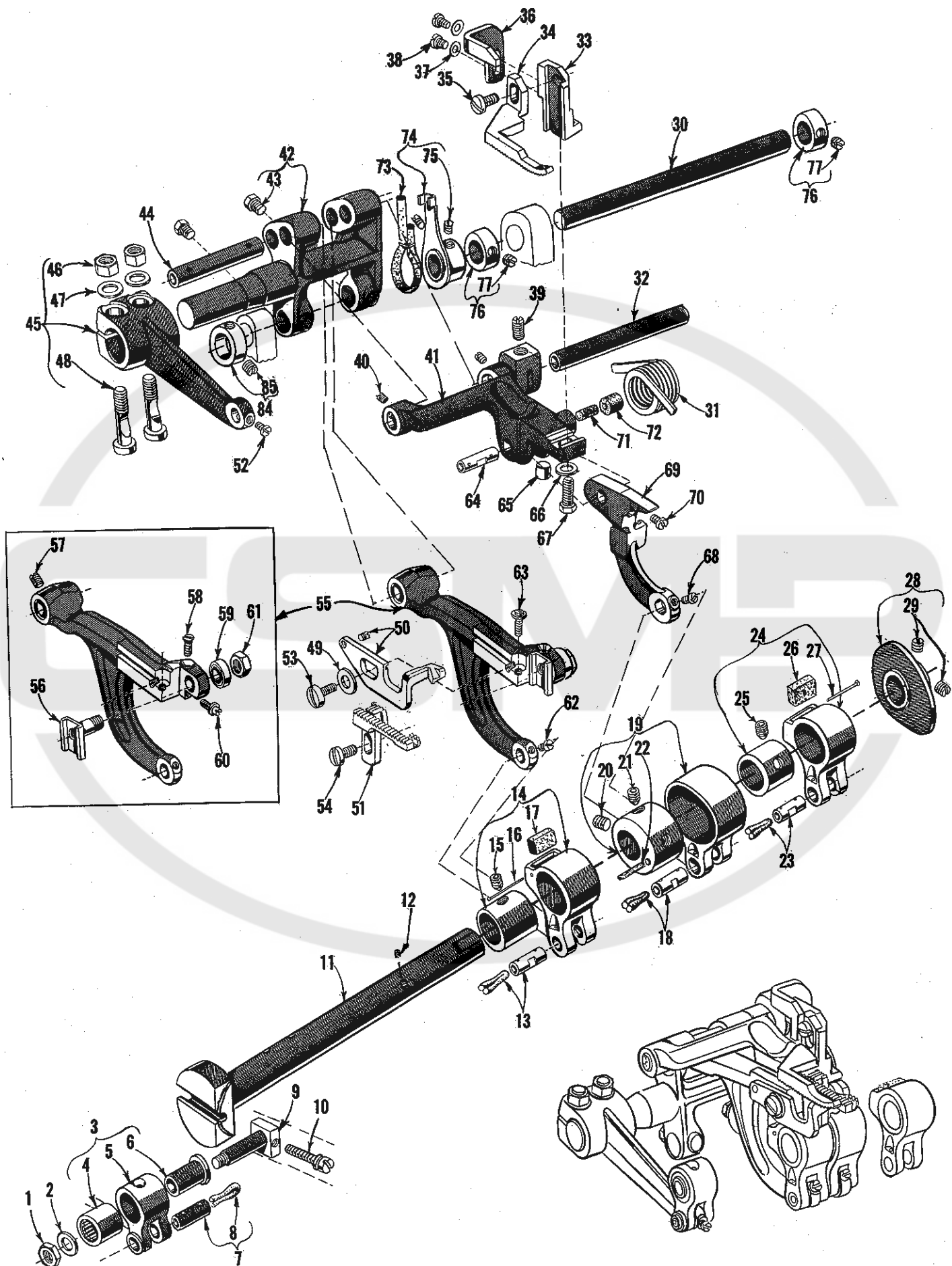
| <u>Ref. No.</u> | <u>Part No.</u> | <u>Description</u> | <u>Amt. Req.</u> |
|-----------------|-----------------|--|------------------|
| 1 to 45 | | See preceding page | |
| 46 | 52835 Q | Differential Feed Fork----- | 1 |
| 47 | 12934 A | Nut ----- | 2 |
| 48 | 22758 B | Screw----- | 3 |
| 49 | 52835 G | Control Lever Link----- | 1 |
| 50 | 52835 U | Pivot Stud Insert----- | 1 |
| 51 | 719 | Screw----- | 1 |
| 52 | 51435 | Control Lever, rear----- | 1 |
| 53 | 51435 B | Control Lever Bushing----- | 1 |
| 54 | 52835 | Differential Feed Control Lever ----- | 1 |
| 55 | 43139 A | Indicator Stop----- | 2 |
| 56 | 52835 N | Control Lever Stop Plate----- | 1 |
| 57 | 22848 | Screw----- | 2 |
| 58 | 25 CC | Screw----- | 2 |
| 59 | 8372 A | Indicator Stop Washer ----- | 2 |
| 60 | 9937 | Nut ----- | 2 |
| 61 | 52835 K | Control Lever Spring ----- | 1 |
| 62 | 61267 G | Pin ----- | 1 |
| 63 | 77 | Screw----- | 1 |
| 64 | 482 | Collar ----- | 2 |
| 65 | 98 | Screw----- | 2 |
| 66 | 52836 C | Feed Rocker Arm ----- | 1 |
| 67 | 51235 G | Washer ----- | 2 |
| 68 | 22519 C | Screw----- | 2 |
| 69 | 22516 | Screw----- | 3 |
| 70 | 52836 H | Feed Rocker Segment Plate ----- | 1 |
| 71 | 57836 F-40 | Sliding Block, marked "N", .2540 inch wide ----- | 1 |
| - | 57836 F-45 | Sliding Block, marked "P", .2545 inch wide ----- | 1 |
| - | 57836 F-50 | Sliding Block, marked "R", .2550 inch wide ----- | 1 |
| 72 | 52836 | Feed Rocker----- | 1 |
| 73 | 22894 P | Screw----- | 2 |
| 74 | 39135 | Feed Bar Shaft----- | 1 |
| 75 | | Wool Yarn----- | 1 |
| 76 | 8 | Feed Rocker Shaft----- | 1 |



FOR STYLES 52900 BF, BG, BH, BN, BP, BR ONLY

MAIN SHAFT AND FEED MECHANISM

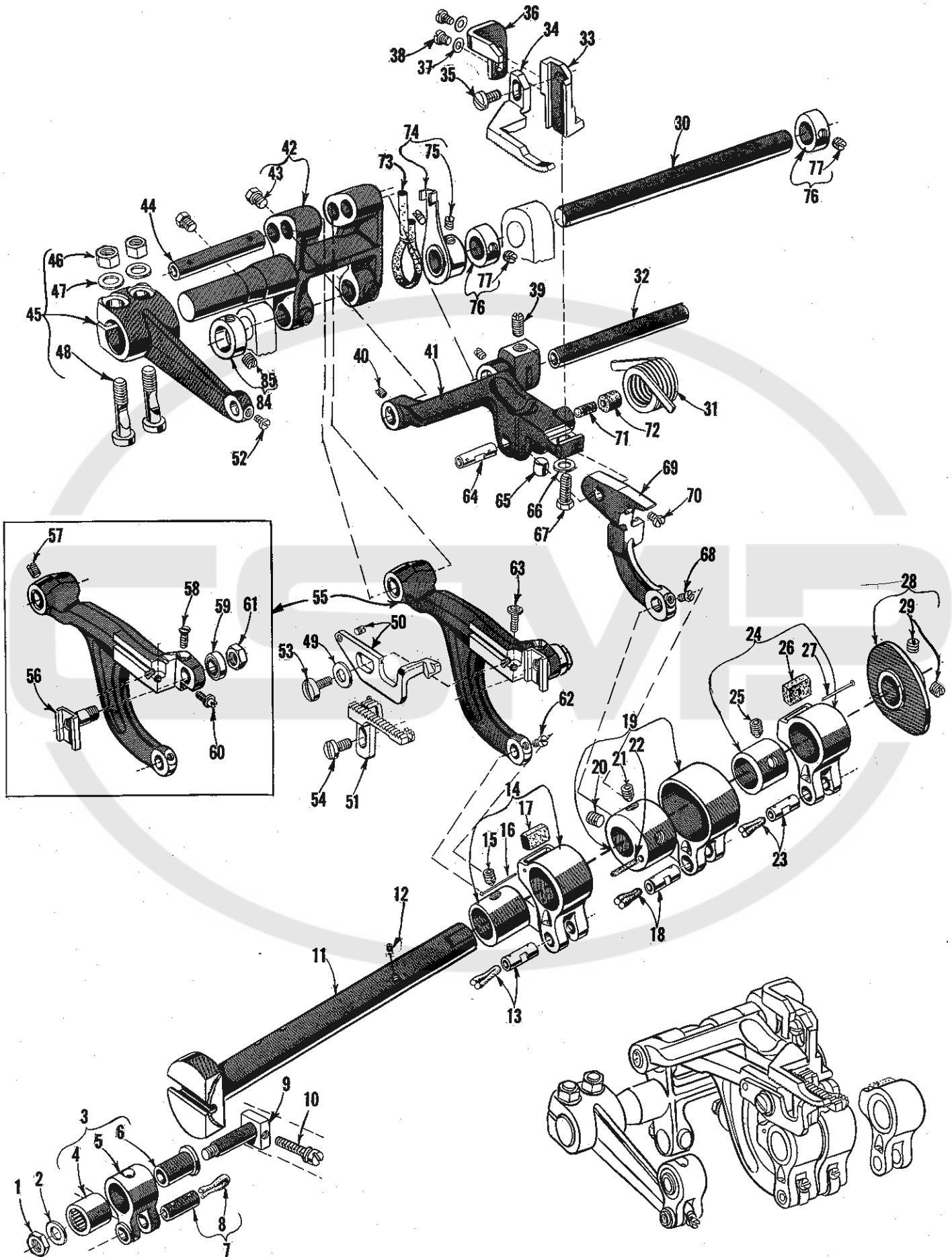
| <u>Ref. No.</u> | <u>Part No.</u> | <u>Description</u> | <u>Amt. Req.</u> |
|---------------------|---------------------|--------------------------------------|----------------------|
| 1 | 269 | Nut, left thread----- | 1 |
| 2 | 20 | Washer----- | 1 |
| 3 | 51236 E | Feed Crank Link, complete----- | 1 |
| 4 | 660-169 | Needle Bearing----- | 1 |
| 5 | 51236 D | Feed Crank Link----- | 1 |
| 6 | 51236 F | Feed Crank Link Ferrule----- | 1 |
| 7 | 51054 | Link Pin----- | 1 |
| 8 | 666-149 | Oil Wick----- | 1 |
| 9 | 51236 G | Feed Crank Stud----- | 1 |
| 10 | 82 | Stitch Regulating Screw----- | 1 |
| 11 | 52922 C | Main Shaft----- | 1 |
| 12 | 22801 | Screw----- | 1 |
| 13 | 77 | Screw----- | 1 |
| 14 | 8 | Feed Rocker Shaft----- | 1 |
| 15 | 51235 A | Feed Rocker Arm----- | 1 |
| 16 | 51235 G | Washer----- | 2 |
| 17 | 22519 C | Screw----- | 2 |
| 18 | 51134 C | Feed Bar Shaft----- | 1 |
| 19 | 51235 | Feed Rocker----- | 1 |
| 20 | 98 | Screw----- | 2 |
| 21 | 51134 R | Lubricating Felt Guard----- | 1 |
| 22 | 51134 P | Lubricating Felt----- | 1 |
| 23 | 51134 A | Tiltable Feed Bar----- | 1 |
| 24 | 166 | Screw----- | 1 |
| 25 | 538 | Feed Dog Height Adjusting Screw----- | 1 |
| 26 | 51134 J | Feed Dog Holder Washer----- | 1 |
| 27 | 258 A | Check Nut----- | 1 |
| 28 | 22863 | Feed Dog Holder Adjusting Screw----- | 1 |
| 29 | 56334 E | Feed Dog Holder----- | 1 |
| 30 | 22834 | Needle Guard Adjusting Screw----- | 1 |
| 31 | | Needle Guard (See Page 35)----- | 1 |
| 32 | | Needle Guard (See Page 35)----- | 1 |
| 33 | 51225 W | Washer----- | 1 |
| 34 | 22585 B | Screw----- | 1 |
| 35 | | Feed Dog (See Pages 37, 39, 41)----- | 1 |
| 36 | 22528 | Screw----- | 1 |
| 37 | 77 | Screw----- | 1 |
| 38 | 29476 DR | Feed Lift Eccentric Assembly----- | 1 |
| 39 | 22894 D | Screw----- | 1 |
| 40 | 51236 A | Link Pin----- | 1 |
| 41 | 29476 DX | Looper Avoid Eccentric Assembly----- | 1 |
| 42 | 22894 D | Screw----- | 1 |
| 43 | 51236 A | Link Pin----- | 1 |
| 44 | 52923 C | Take-up----- | 1 |
| 45 | 22580 | Set Screw----- | 2 |



FOR STYLE 52900 BM ONLY

MAIN SHAFT AND TOP FEED MECHANISM

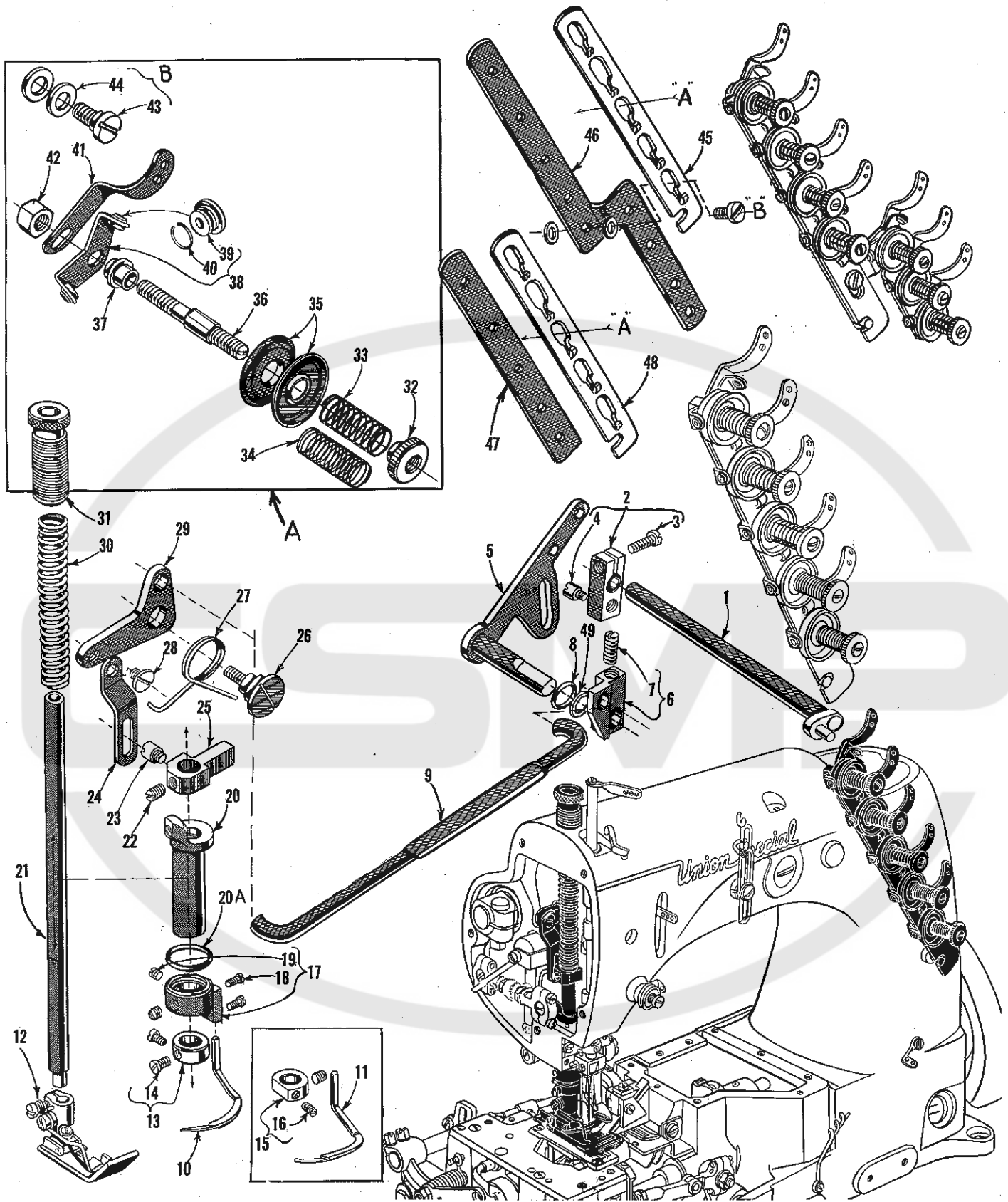
| <u>Ref. No.</u> | <u>Part No.</u> | <u>Description</u> | <u>Amt. Req.</u> |
|-----------------|-----------------|---------------------------------------|------------------|
| 1 | 269 | Nut----- | 1 |
| 2 | 20 | Washer----- | 1 |
| 3 | 51236 E | Feed Crank Link Assembly----- | 1 |
| 4 | 660-169 | Needle Bearing----- | 1 |
| 5 | 51236 D | Feed Crank Link----- | 1 |
| 6 | 51236 F | Feed Crank Link Ferrule----- | 1 |
| 7 | 51054 | Link Pin----- | 1 |
| 8 | 666-149 | Oil Wick----- | 1 |
| 9 | 51236 G | Feed Crank Stud----- | 1 |
| 10 | 82 | Screw----- | 1 |
| 11 | 52922 G | Main Shaft----- | 1 |
| 12 | 22801 | Screw----- | 1 |
| 13 | 51236 A | Link Pin----- | 1 |
| 14 | 29476 AR | Feed Lift Eccentric Assembly----- | 1 |
| 15 | 22894 D | Screw----- | 1 |
| 16 | PI-18 | Pin----- | 1 |
| 17 | 666-82 | Felt Wick----- | 1 |
| 18 | 51236 A | Link Pin----- | 1 |
| 19 | 29476 GM | Top Feed Lift Eccentric Assembly----- | 1 |
| 20 | 22894 C | Screw, set----- | 1 |
| 21 | 22894 D | Screw, spot----- | 1 |
| 22 | 666-81 | Felt Wick----- | 1 |
| 23 | 51236 A | Link Pin----- | 1 |
| 24 | 29476 BJ | Looper Avoid Eccentric Assembly----- | 1 |
| 25 | 22894 D | Screw----- | 1 |
| 26 | 666-82 | Felt Wick----- | 1 |
| 27 | PI-18 | Pin----- | 1 |
| 28 | 52923 C | Looper Thread Take-up----- | 1 |
| | 22580 | Screw, set----- | 2 |
| | 8 | Feed Rocker Shaft----- | 1 |
| 31 | 51134 N | Feed Bar Spring----- | 1 |
| 32 | 51034 A | Feed Bar Shaft----- | 1 |
| 33 | 52934 D | Top Feed Dog Holder----- | 1 |
| 34 | | Top Feed Dog (See Page 39)----- | 1 |
| 35 | 22528 | Screw----- | 1 |
| 36 | K68719 | Top Feed Lifter----- | 1 |
| 37 | 21210 B | Washer----- | 2 |
| 38 | 90 | Screw----- | 2 |
| 39 | HA95 | Screw----- | 1 |
| 40 | 88 B | Screw----- | 2 |
| 41 | 52934 A | Feed Bar, upper----- | 1 |
| 42 to 77 | | See following page | |



FOR STYLE 52900 BM ONLY

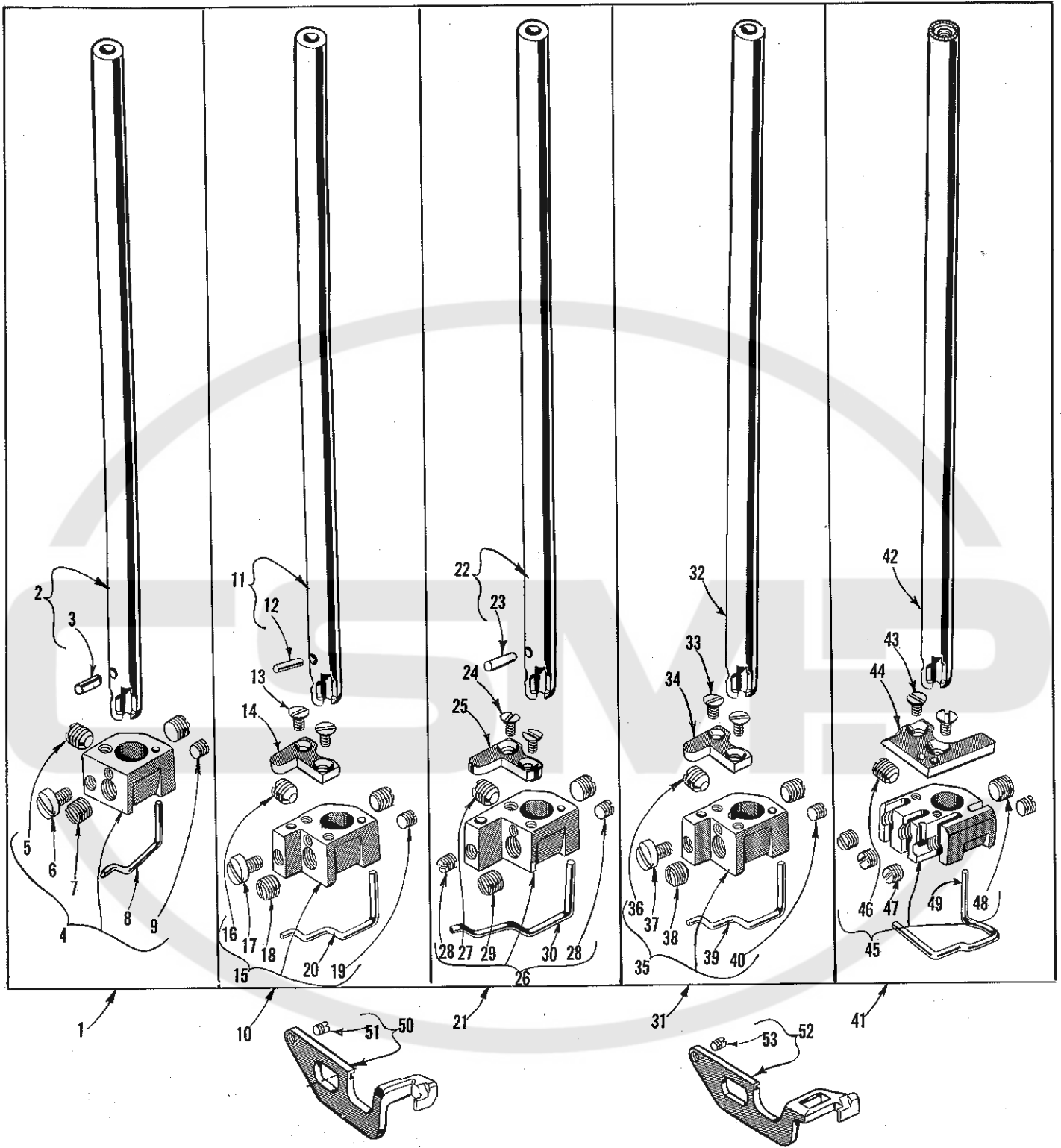
TOP FEED MECHANISM

| <u>Ref. No.</u> | <u>Part No.</u> | <u>Description</u> | <u>Amt. Req.</u> |
|---------------------|---------------------|---|----------------------|
| 1 to 41 | | See preceding page | |
| 42 | 52935 | Feed Rocker----- | 1 |
| 43 | 92127 | Screw----- | 2 |
| 44 | 51134 C | Feed Bar Shaft----- | 1 |
| 45 | 51135 P | Feed Rocker Arm----- | 1 |
| 46 | 55235 E | Nut----- | 2 |
| 47 | 6042 A | Washer----- | 2 |
| 48 | 55235 D | Stud----- | 2 |
| 49 | 51225 W | Washer----- | 1 |
| 50 | | Needle Guard (See Page 35)----- | 1 |
| 51 | | Feed Dog (See Page 39)----- | 1 |
| 52 | 77 | Screw----- | 1 |
| 53 | 22585 B | Screw----- | 1 |
| 54 | 22528 | Screw----- | 1 |
| 55 | 52934 | Feed Bar----- | 1 |
| 56 | 51134 HA | Feed Dog Holder----- | 1 |
| 57 | 22560 B | Screw----- | 1 |
| 58 | 538 | Screw----- | 1 |
| 59 | 51134 J | Washer----- | 1 |
| 60 | 22863 | Screw----- | 1 |
| 61 | 258 | Nut----- | 1 |
| 62 | 77 | Screw----- | 1 |
| 63 | 22834 | Needle Guard Adjusting Screw----- | 1 |
| 64 | 51134 V | Taper Pin----- | 1 |
| 65 | 52934 C | Upper Feed Bar Stop----- | 1 |
| 66 | 51216 N | Washer----- | 1 |
| 67 | 22852 | Screw----- | 1 |
| 68 | 77 | Screw----- | 1 |
| 69 | 52934 B | Upper Feed Bar Arm----- | 1 |
| 70 | 90 | Screw----- | 1 |
| 71 | 666-47 | Felt----- | 1 |
| 72 | 666-138 | Felt----- | 1 |
| 73 | 51134 T | Lubricating Felt----- | 1 |
| 74 | 51135 R | Feed Rocker Shaft Collar and Lubricating Felt Support----- | 1 |
| 75 | 98 | Screw----- | 2 |
| 76 | 14649 | Collar----- | 3 |
| 77 | 88 | Screw----- | 6 |



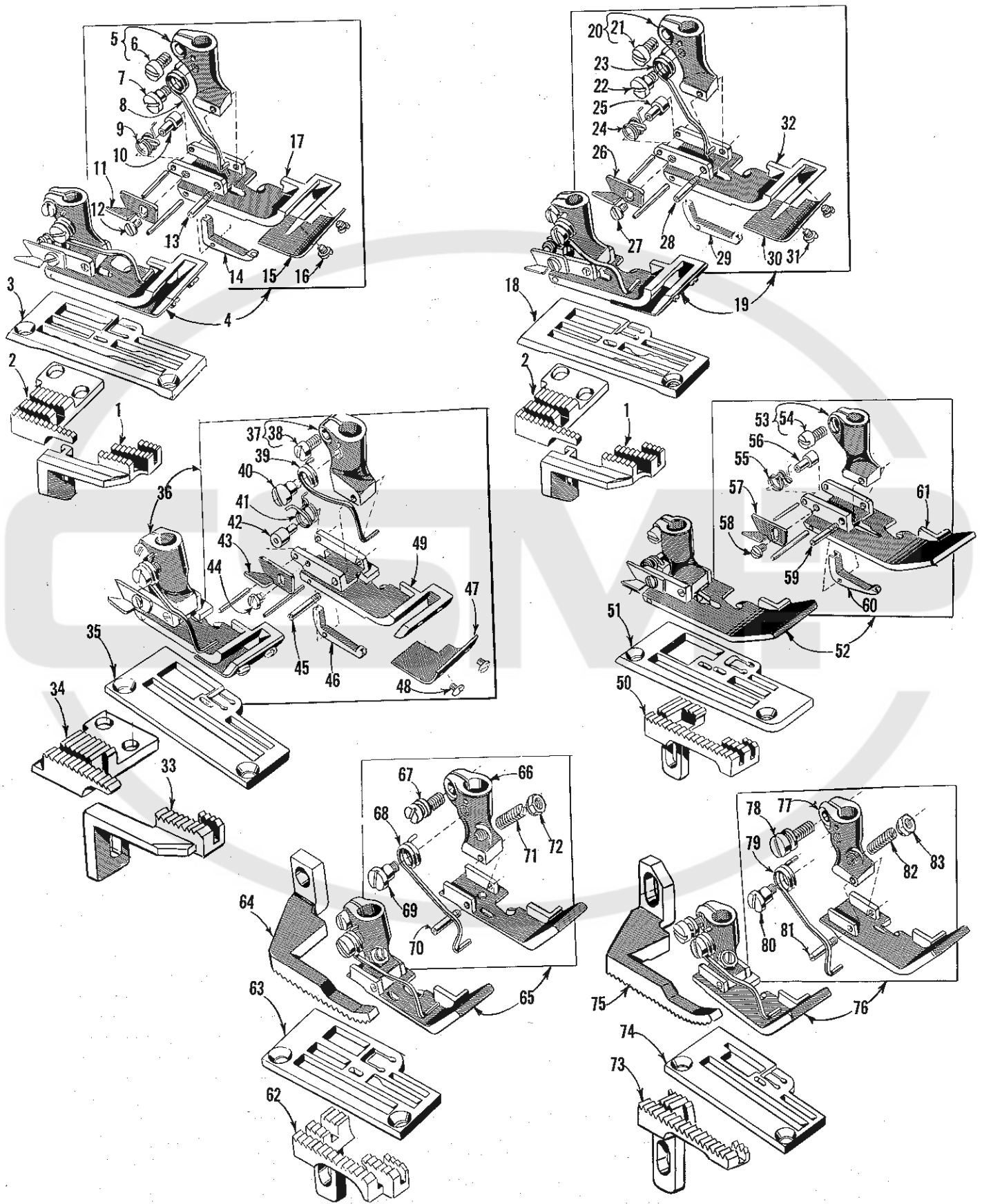
THREAD TENSION, LIFTER LEVER PARTS AND SPREADER HOLDING PARTS

| <u>Ref. No.</u> | <u>Part No.</u> | <u>Description</u> | <u>Amt. Req.</u> |
|-----------------|-----------------|--|------------------|
| 1 | 21657 W | Tension Release Lever Shaft ----- | 1 |
| 2 | 21657 Y | Tension Release Lever Connection ----- | 1 |
| 3 | 22596 | Screw ----- | 1 |
| 4 | 402 | Screw ----- | 1 |
| 5 | 51283 H | Presser Foot Lifter Lever ----- | 1 |
| 6 | 53783 N | Presser Foot Lifter Lever, internal ----- | 1 |
| 7 | 22537 | Screw ----- | 1 |
| 8 | 660-207 | Oil Ring, for presser foot lever ----- | 1 |
| 9 | 53783 M | Presser Foot Lifter Lever Connecting Rod ----- | 1 |
| 10 | 52945 M | Spreader, for all Styles except 52900 BP ----- | 1 |
| 11 | 52945 L | Spreader, for Style 52900 BP ----- | 1 |
| 12 | | Presser Foot (See Pages 37, 39, 41) ----- | 1 |
| 13 | 52888 B | Presser Bar Stop Collar, for all Styles except 52900 BM -- | 1 |
| 14 | 22562 | Screw ----- | 2 |
| 15 | K68042 | Presser Bar Stop Collar, for Style 52900 BM ----- | 1 |
| 16 | 22565 C | Screw ----- | 2 |
| 17 | 52846 A | Spreader Holder ----- | 1 |
| 18 | 77 A | Screw ----- | 2 |
| 19 | 22894 W | Screw ----- | 2 |
| 20 | 52847 | Spreader Holder Carrier and Lower Presser Bar Bushing-- | 1 |
| 20A | 660-202 | Oil Ring ----- | 1 |
| 21 | 53688 | Presser Bar ----- | 1 |
| 22 | 531 | Screw ----- | 1 |
| 23 | 402 | Screw ----- | 1 |
| 24 | 53783 A | Lifter Lever Link ----- | 1 |
| 25 | 51257 M | Presser Bar Connection and Guide ----- | 1 |
| 26 | 22557 B | Screw ----- | 1 |
| 27 | 52883 S | Presser Foot Lifter Lever Bell Crank Spring ----- | 1 |
| 28 | 22758 C | Screw ----- | 1 |
| 29 | 53783 L | Presser Foot Lifter Lever Crank ----- | 1 |
| 30 | 51256 C | Presser Bar Spring ----- | 1 |
| 31 | 52889 A | Presser Spring Regulator ----- | 1 |
| 32 | 51292 C | Tension Nut, for Style 52900 BP ----- | 7 |
| | 51292 C | Tension Nut, for all Styles except 52900 BP ----- | 5 |
| 33 | 51292 F-8 | Tension Spring, needle, for Style 52900 BP ----- | 4 |
| | 51292 F-8 | Tension Spring, needle, for all Styles except 52900 BP --- | 3 |
| 34 | 51292 F-2 | Tension Spring, looper, for Style 52900 BP ----- | 3 |
| | 51292 F-2 | Tension Spring, looper, for all Styles except 52900 BP --- | 2 |
| 35 | 109 | Tension Disc, for Style 52900 BP ----- | 14 |
| | 109 | Tension Disc, for all Styles except 52900 BP ----- | 10 |
| 36 | 51292 G | Tension Post, for Style 52900 BP ----- | 7 |
| | 51292 G | Tension Post, for all Styles except 52900 BP ----- | 5 |
| 37 | 51292 A | Tension Post Ferrule, for Style 52900 BP ----- | 7 |
| | 51292 A | Tension Post Ferrule, for all Styles except 52900 BP ----- | 5 |
| 38 | 51292 D | Tension Post Eyelet, for Style 52900 BP ----- | 7 |
| | 51292 D | Tension Post Eyelet, for all Styles except 52900 BP ----- | 5 |
| 39 | 668-25 | Eyelet Insert ----- | 10-14 |
| 40 | 668-28 | Locking Ring ----- | 10-14 |
| 41 | 51491 C | Thread Lead-in Guide, for Style 52900 BP ----- | 7 |
| | 51491 C | Thread Lead-in Guide, for all Styles except 52900 BP ---- | 5 |
| 42 | 43266 | Nut, for Style 52900 BP ----- | 6 |
| | 43266 | Nut, for all Styles except 52900 BP ----- | 3 |
| 43 | 22598 C | Tension Release Stud, for Style 52900 BP ----- | 1 |
| 44 | 80557 | Washer, for Style 52900 BP ----- | 2 |
| 45 | 21657 AM-5 | Tension Disc Separator ----- | 1 |
| 46 | 51892 | Tension Post Support, for Style 52900 BP ----- | 1 |
| 47 | 52992 A | Tension Post Support, for all Styles except 52900 BP ----- | 1 |
| 48 | 21657 AM-5 | Tension Disc Separator ----- | 1 |
| 49 | 39552 C | Washer, for presser foot lifter lever, internal ----- | 1 |



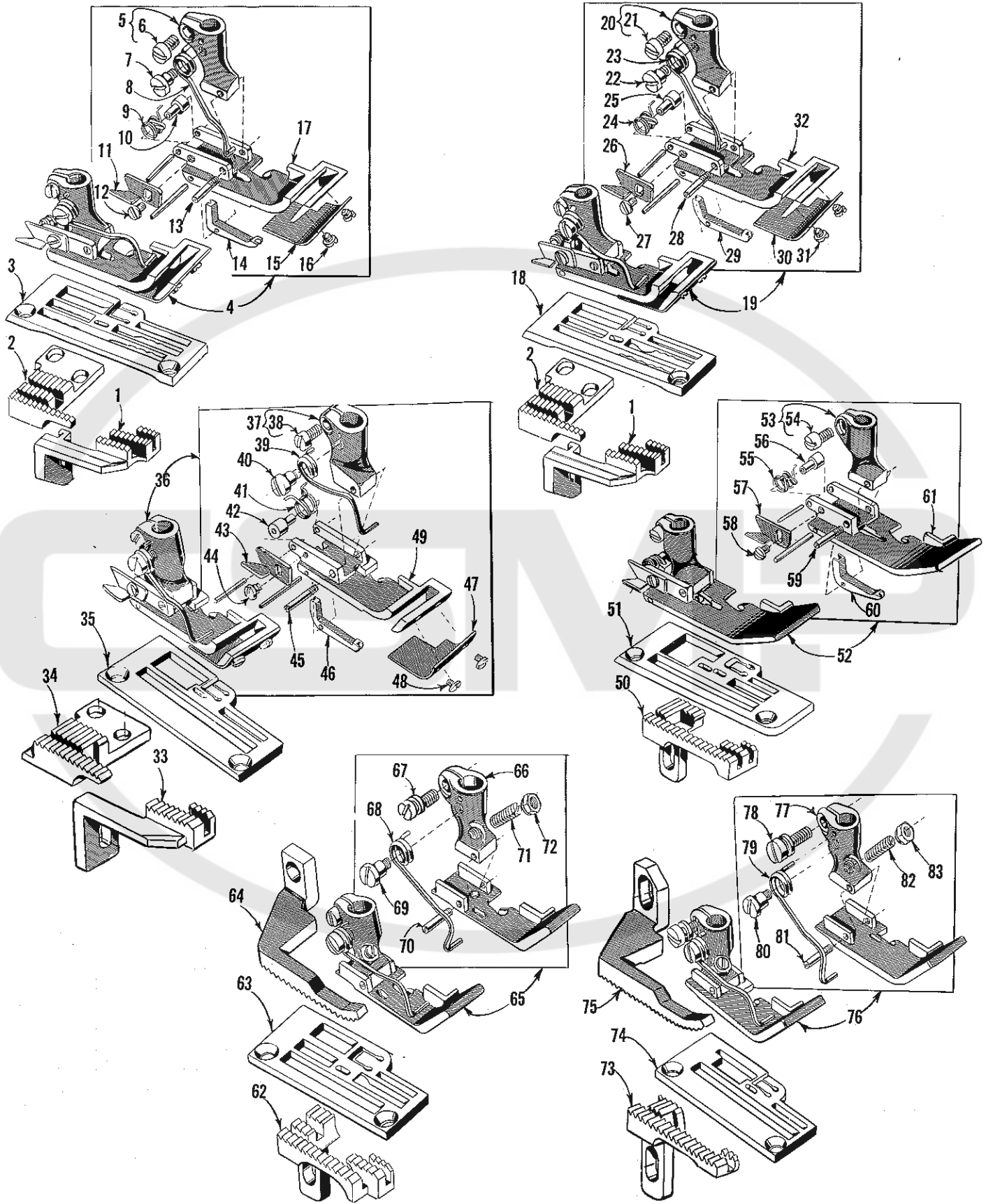
NEEDLE BARS, NEEDLE HOLDERS AND NEEDLE GUARDS

| <u>Ref. No.</u> | <u>Part No.</u> | <u>Description</u> | <u>Amt. Req.</u> |
|-----------------|-----------------|---|------------------|
| 1 | 29264 S-5-8 | Needle Bar Assembly, for No. 5-8 gauge, Styles 52900 BF, BG, BH, BL, BM, BN, BR----- | 1 |
| 2 | 52917-8 | Needle Bar, marked "BE-8"----- | 1 |
| 3 | 50 J-16 | Needle Stop Pin----- | 1 |
| 4 | 52918-5-8 | Needle Clamp Collar, marked "AG"----- | 1 |
| 5 | 89 | Screw, spot----- | 1 |
| 6 | 28 | Screw, needle set----- | 1 |
| 7 | 88 B | Screw, needle set----- | 2 |
| 8 | 52842 G | Thread Guide Wire----- | 1 |
| 9 | 28 C | Screw----- | 1 |
| 10 | 29264 T-16-8 | Needle Bar Assembly, for No. 16-8 gauge, Styles 52900 BG, BH, BL, BN, BR----- | 1 |
| 11 | 52917-8 | Needle Bar, marked "BE-8"----- | 1 |
| 12 | 50 J-16 | Needle Stop Pin----- | 1 |
| 13 | 22716 | Screw----- | 2 |
| 14 | 52931 | Needle Stop Plate----- | 1 |
| 15 | 52918-16-8 | Needle Clamp Collar, marked "R"----- | 1 |
| 16 | 89 | Screw, spot----- | 1 |
| 17 | 28 | Screw, needle set----- | 1 |
| 18 | 88 B | Screw, needle set----- | 2 |
| 19 | 28 C | Screw----- | 1 |
| 20 | 52942 H | Thread Guide Wire----- | 1 |
| 21 | 29264 U-24-8 | Needle Bar Assembly, for No. 24-8 gauge, Style 52900 BG--- | 1 |
| 22 | 52917-8 | Needle Bar, marked "BE-8"----- | 1 |
| 23 | 50 J-16 | Needle Stop Pin----- | 1 |
| 24 | 22716 | Screw----- | 2 |
| 25 | 52931 A | Needle Stop Plate----- | 1 |
| 26 | 52918-24-8 | Needle Clamp Collar, marked "Y"----- | 1 |
| 27 | 89 | Screw, spot----- | 1 |
| 28 | 28 C | Screw, needle set----- | 2 |
| 29 | 88 B | Screw, needle set----- | 2 |
| 30 | 52942 J | Thread Guide Wire----- | 1 |
| 31 | 29264 U-12-12 | Needle Bar Assembly, for No. 12-12 gauge, Styles 52900 BH, BL, BM, BN, BR----- | 1 |
| 32 | 52917-12 | Needle Bar, marked "BE-12"----- | 1 |
| 33 | 22716 | Screw----- | 2 |
| 34 | 52931 | Needle Stop Plate----- | 1 |
| 35 | 52918-12-12 | Needle Clamp Collar, marked "W"----- | 1 |
| 36 | 89 | Screw, spot----- | 1 |
| 37 | 28 | Screw, needle set----- | 1 |
| 38 | 88 B | Screw, needle set----- | 2 |
| 39 | 52942 H | Thread Guide Wire----- | 1 |
| 40 | 28 C | Screw----- | 1 |
| 41 | 29264 W-1-11-12 | Needle Bar Assembly, for No. 1-11-12 gauge Style 52900 BP----- | 1 |
| 42 | 52917 B-1-11-12 | Needle Bar, marked "DU"----- | 1 |
| 43 | 22716 | Screw----- | 2 |
| 44 | 52931 C | Needle Stop Plate----- | 1 |
| 45 | 52918 A-1-11-12 | Needle Clamp Collar, marked "AE"----- | 1 |
| 46 | 89 | Screw, spot----- | 1 |
| 47 | 22743 | Screw, needle set----- | 4 |
| 48 | 88 B | Screw----- | 1 |
| 49 | 52942 K | Thread Guide Wire----- | 1 |
| 50 | 52925 G | Needle Guard, for Nos. 5-8, 24-8, 16-8 and 12-12 gauges Styles 52900 BF, BG, BH, BM, BN, BR----- | 1 |
| 51 | 22801 | Pivot Screw----- | 1 |
| 52 | 52925 E | Needle Guard, for No. 1-11-12 gauge, Style 52900 BP----- | 1 |
| 53 | 22801 | Pivot Screw----- | 1 |



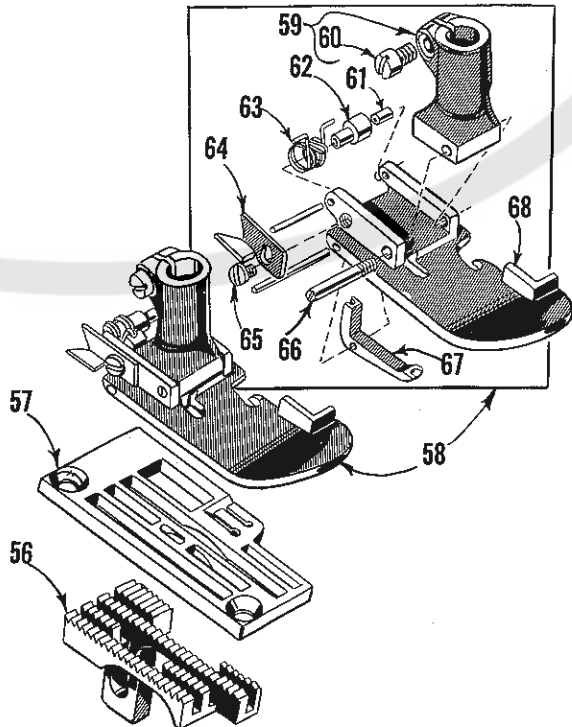
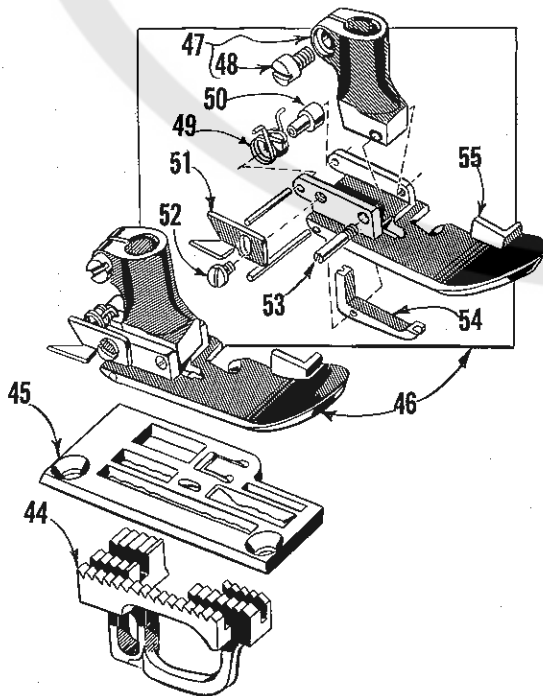
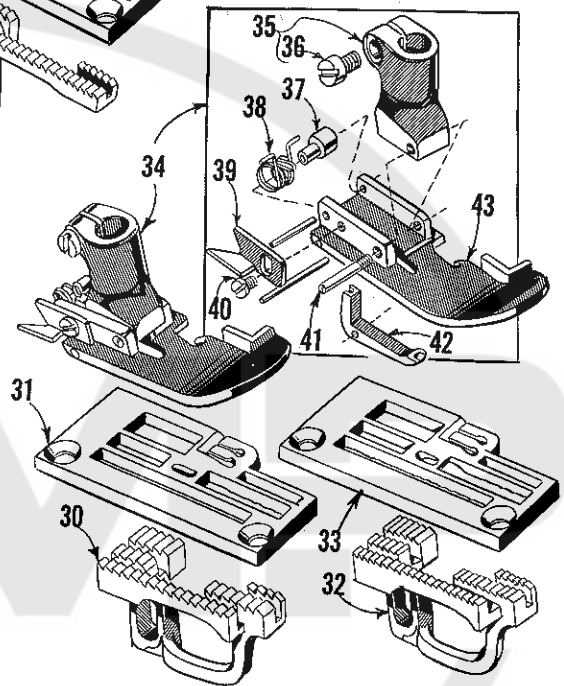
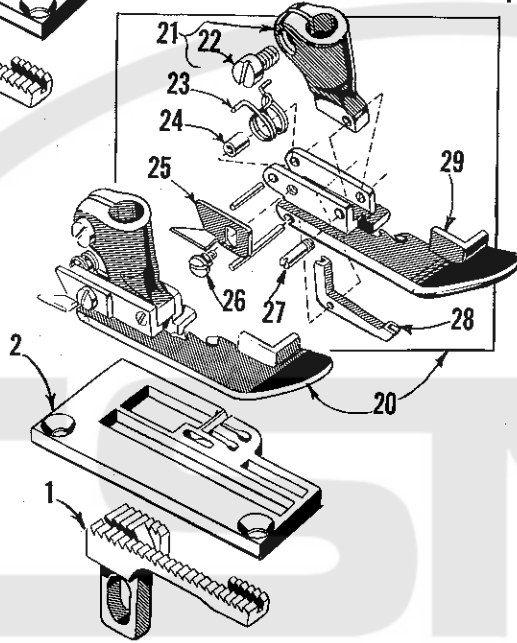
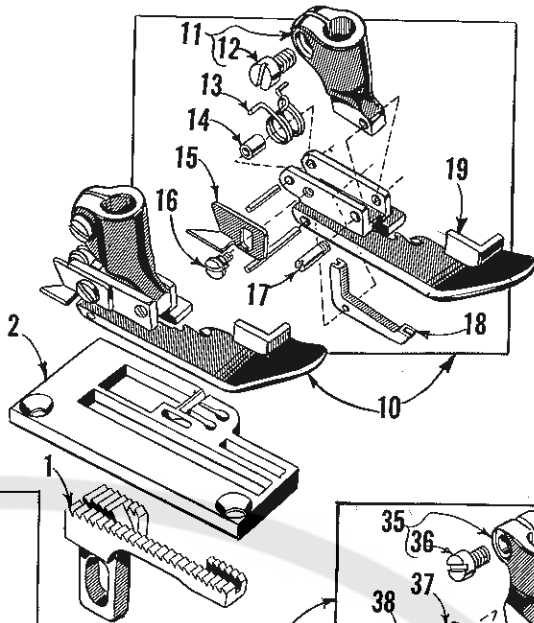
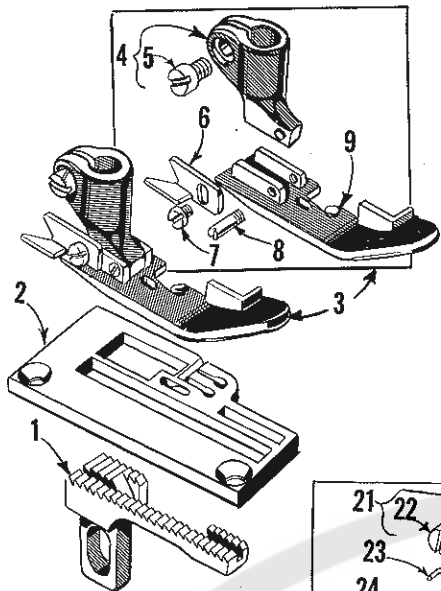
FEED DOGS, THROAT PLATES, PRESSER FEET

| <u>Ref. No.</u> | <u>Part No.</u> | <u>Description</u> | <u>Amt. Req.</u> |
|-----------------|-----------------|--|------------------|
| 1 | 52926 BL-12-12 | Differential Feed Dog, for Nos. 12-12 and 16-8 gauges, Style 52900 BL ----- | 1 |
| 2 | 52905 BL-12-12 | Main Feed Dog, for Nos. 12-12 and 16-8 gauges, Style 52900 BL ----- | 1 |
| 3 | 52928 BL-12-12 | Throat Plate, for No. 12-12 gauge, Style 52900 BL ----- | 1 |
| 4 | 52920 BL-12-12 | Presser Foot, for No. 12-12 gauge, Style 52900 BL ----- | 1 |
| 5 | 52930 HB | Presser Foot Shank ----- | 1 |
| 6 | 91 | Screw ----- | 1 |
| 7 | 57 WD | Spring Screw ----- | 1 |
| 8 | 52830 G | Presser Foot Spring ----- | 1 |
| 9 | 52930 V | Needle Hole Section Spring ----- | 1 |
| 10 | 52930 AG | Spring Ferrule ----- | 1 |
| 11 | 52930 AC | Chain Cutter ----- | 1 |
| 12 | 604 | Screw ----- | 1 |
| 13 | 22799 R | Hinge Screw ----- | 1 |
| 14 | 52930 J | Needle Hole Section ----- | 1 |
| 15 | 52930 AJ | Stripper Blade ----- | 1 |
| 16 | 91 A | Screw ----- | 2 |
| 17 | 52930 BL-12-12 | Presser Foot Bottom ----- | 1 |
| 18 | 52928 BL-16-8 | Throat Plate, for No. 16-8 gauge, Style 52900 BL ----- | 1 |
| 19 | 52920 BL-16-8 | Presser Foot, for No. 16-8 gauge, Style 52900 BL ----- | 1 |
| 20 | 52930 HB | Presser Foot Shank ----- | 1 |
| 21 | 91 | Screw ----- | 1 |
| 22 | 57 WD | Spring Screw ----- | 1 |
| 23 | 52830 G | Presser Foot Spring ----- | 1 |
| 24 | 52930 V | Needle Hole Section Spring ----- | 1 |
| 25 | 52930 AG | Spring Ferrule ----- | 1 |
| 26 | 52930 AC | Chain Cutter ----- | 1 |
| 27 | 604 | Screw ----- | 1 |
| 28 | 22799 R | Hinge Screw ----- | 1 |
| 29 | 52930 J | Needle Hole Section ----- | 1 |
| 30 | 52930 AJ | Stripper Blade ----- | 1 |
| 31 | 91 A | Screw ----- | 2 |
| 32 | 52930 BL-16-8 | Presser Foot Bottom ----- | 1 |
| 33 | 52926 BL-5-8 | Differential Feed Dog, for No. 5-8 gauge, Style 52900 BL ----- | 1 |
| 34 | 52905 BL-5-8 | Main Feed Dog, for No. 5-8 gauge, Style 52900 BL ----- | 1 |
| 35 | 52924 BL-5-8 | Throat Plate, for No. 5-8 gauge, Style 52900 BL ----- | 1 |
| 36 | 52920 BL-5-8 | Presser Foot, for No. 5-8 gauge, Style 52900 BL ----- | 1 |
| 37 | 52930 HB | Presser Foot Shank ----- | 1 |
| 38 | 91 | Screw ----- | 1 |
| 39 | 52830 G | Presser Foot Spring ----- | 1 |
| 40 | 57 WD | Spring Screw ----- | 1 |
| 41 | 52930 V | Needle Hole Section Spring ----- | 1 |
| 42 | 52930 AG | Spring Ferrule ----- | 1 |
| 43 | 52930 AC | Chain Cutter ----- | 1 |
| 44 | 604 | Screw ----- | 1 |
| 45 | 22799 R | Hinge Screw ----- | 1 |
| 46 | 52930 C | Needle Hole Section ----- | 1 |
| 47 | 52930 AK | Stripper Blade ----- | 1 |
| 48 | 91 A | Screw ----- | 2 |
| 49 | 52930 BL-5-8 | Presser Foot Bottom ----- | 1 |
| 50 to 83 | | See following page | |



FEED DOGS, THROAT PLATES, PRESSER FEET

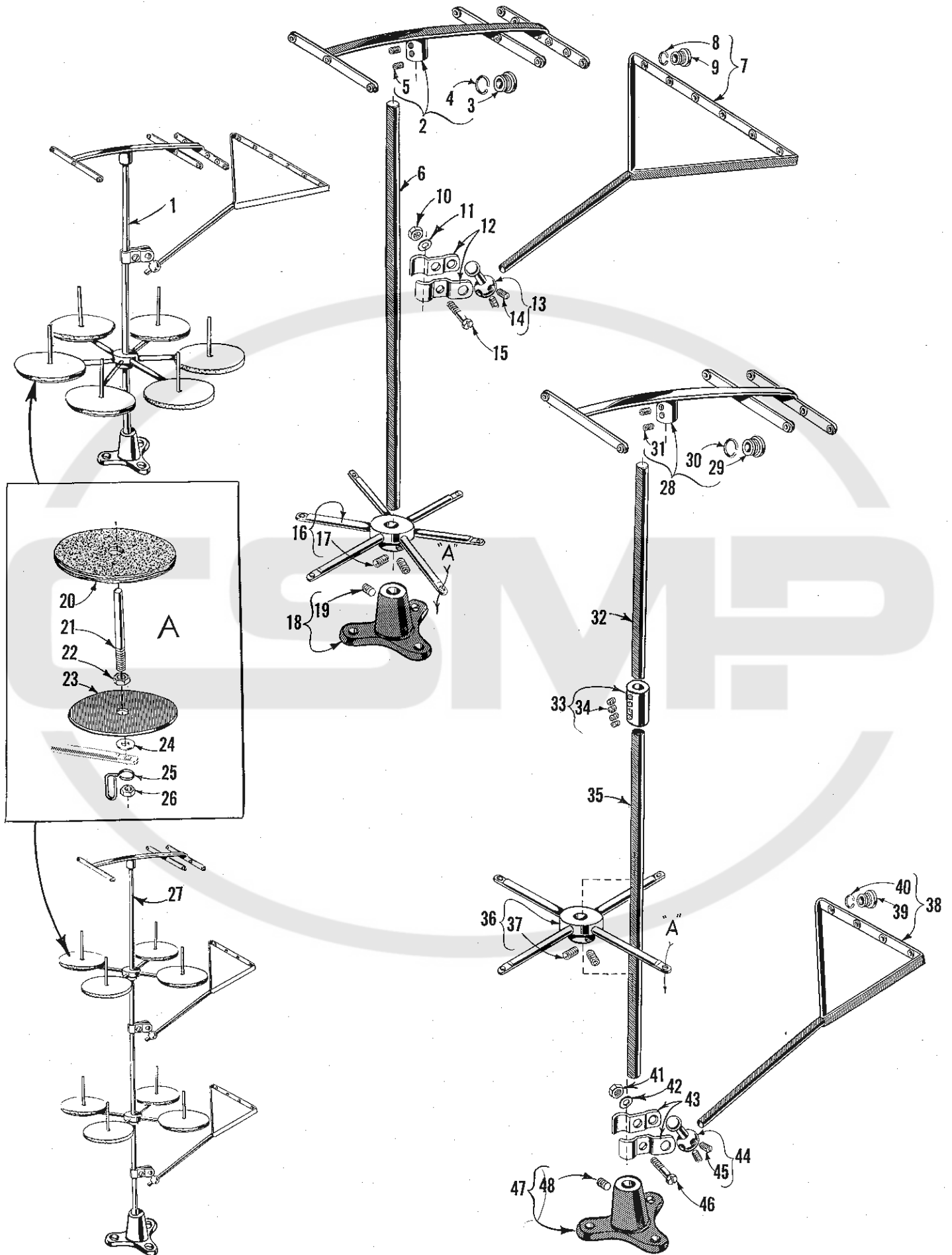
| <u>Ref. No.</u> | <u>Part No.</u> | <u>Description</u> | <u>Amt. Req.</u> |
|-----------------|------------------|--|------------------|
| 1 to 49 | | See preceding page | |
| 50 | 52905 BJ-1-11-12 | Feed Dog, for No. 1-11-12 gauge, Style 52900 BP ----- | 1 |
| 51 | 52924 BJ-1-11-12 | Throat Plate, for No. 1-11-12 gauge, Style 52900 BP ----- | 1 |
| 52 | 52920 BP-1-11-12 | Presser Foot, for No. 1-11-12 gauge, Style 52900 BP ----- | 1 |
| 53 | 52930 H | Presser Foot Shank----- | 1 |
| 54 | 91 | Screw----- | 1 |
| 55 | 52930 V | Needle Hole Section Spring ----- | 1 |
| 56 | 52930 AG | Spring Ferrule ----- | 1 |
| 57 | 52930 AC | Chain Cutter ----- | 1 |
| 58 | 604 | Screw ----- | 1 |
| 59 | 22799 R | Hinge Screw ----- | 1 |
| 60 | 52930 AM | Needle Hole Section----- | 1 |
| 61 | 52930 AL-1-11-12 | Presser Foot Bottom ----- | 1 |
| 62 | 52905 BM-12-12 | Feed Dog, for No. 12-12 gauge, Style 52900 BM----- | 1 |
| 63 | K67893 | Throat Plate, for No. 12-12 gauge, Style 52900 BM----- | 1 |
| 64 | 52926 BM-12-12 | Upper Feed Dog, for No. 12-12 gauge, Style 52900 BM----- | 1 |
| 65 | K67719 | Presser Foot, for No. 12-12 gauge, Style 52900 BM----- | 1 |
| 66 | K70976 | Presser Foot Shank----- | 1 |
| 67 | 22795 | Screw ----- | 1 |
| 68 | 52830 G | Presser Foot Spring ----- | 1 |
| 69 | 57 WD | Spring Screw----- | 1 |
| 70 | 22799 P | Hinge Screw ----- | 1 |
| 71 | 22840 A | Screw----- | 1 |
| 72 | 51430 F | Nut ----- | 1 |
| 73 | K68077 | Feed Dog, for No. 5-8 gauge, Style 52900 BM - | 1 |
| 74 | K68076 | Throat Plate, for No. 5-8 gauge, Style 52900 BM----- | 1 |
| 75 | K68413 | Upper Feed Dog, for No. 5-8 gauge, Style 52900 BM----- | 1 |
| 76 | K67615 | Presser Foot, for No. 5-8 gauge, Style 52900 BM----- | 1 |
| 77 | K70976 | Presser Foot Shank----- | 1 |
| 78 | 22795 | Screw ----- | 1 |
| 79 | 52830 G | Presser Foot Spring ----- | 1 |
| 80 | 57 WD | Spring Screw----- | 1 |
| 81 | 22799 P | Hinge Pin----- | 1 |
| 82 | 22840 A | Screw ----- | 1 |
| 83 | 51430 F | Nut ----- | 1 |



FEED DOGS, THROAT PLATES, PRESSER FEET

| <u>Ref. No.</u> | <u>Part No.</u> | <u>Description</u> | <u>Amt. Req.</u> |
|-----------------|-----------------|--|------------------|
| 1 | 52905 BH-5-8 | Feed Dog, 16 teeth per inch, for No. 5-8 gauge, Styles 52900 BF, BG, BH, BN----- | 1 |
| - | 52926 BR-5-8 | Feed Dog, 22 teeth per inch, for No. 5-8 gauge, Style 52900 BR----- | 1 |
| 2 | 52924 BH-5-8 | Throat Plate, .060 inch needle hole, for 5-8 gauge, Styles 52900 BF, BG, BH, BN----- | 1 |
| - | 52928 BR-5-8 | Throat Plate, .050 inch needle hole, for No. 5-8 gauge, Style 52900 BR----- | 1 |
| 3 | 52920 F-5-8 | Presser Foot, for No. 5-8 gauge, Style 52900 BF----- | 1 |
| 4 | 52930 | Presser Foot Shank----- | 1 |
| 5 | 91 | Screw----- | 1 |
| 6 | 52930 AC | Chain Cutter----- | 1 |
| 7 | 91 A | Screw----- | 1 |
| 8 | 22799 F | Hinge Screw----- | 1 |
| 9 | 52930 Y | Presser Foot Bottom----- | 1 |
| 10 | 52920 G-5-8 | Presser Foot, for No. 5-8 gauge, Styles 52900 BH, BN, BR----- | 1 |
| 11 | 52930 | Presser Foot Shank----- | 1 |
| 12 | 91 | Screw----- | 1 |
| 13 | 52930 V | Needle Hole Section Spring----- | 1 |
| 14 | 52930 W | Bearing Sleeve----- | 1 |
| 15 | 52930 AC | Chain Cutter----- | 1 |
| 16 | 604 | Screw----- | 1 |
| 17 | 22799 F | Hinge Screw----- | 1 |
| 18 | 52930 C | Needle Hole Section----- | 1 |
| 19 | 52930 Z | Presser Foot Bottom----- | 1 |
| 20 | 52920 BG-5-8 | Presser Foot, for No. 5-8 gauge, Style 52900 BG----- | 1 |
| 21 | 52930 | Presser Foot Shank----- | 1 |
| 22 | 91 | Screw----- | 1 |
| 23 | 52930 V | Needle Hole Section Spring----- | 1 |
| 24 | 52930 W | Bearing Sleeve----- | 1 |
| 25 | 52930 AC | Chain Cutter----- | 1 |
| 26 | 604 | Screw----- | 1 |
| 27 | 22799 F | Hinge Screw----- | 1 |
| 28 | 52930 C | Needle Hole Section----- | 1 |
| 29 | 52930 AR | Presser Foot Bottom----- | 1 |
| 30 | 52926 BH-16-8 | Feed Dog, for No. 16-8 gauge, Styles 52900 BH, BN----- | 1 |
| 31 | 52924 D-16-8 | Throat Plate, for No. 16-8 gauge, Styles 52900 BH, BN----- | 1 |
| - | 52928 BR-16-8 | Throat Plate, for No. 16-8 gauge, Style 52900 BR----- | 1 |
| 32 | 52926 BB-16-8 | Feed Dog, for No. 16-8 gauge, Style 52900 BG----- | 1 |
| - | 52926 BR-16-8 | Feed Dog, for No. 16-8 gauge, Style 52900 BR----- | 1 |
| 33 | 52928 A-16-8 | Throat Plate, for No. 16-8 gauge, Style 52900 BG----- | 1 |
| *34 | 52920 G-16-8 | Presser Foot, for No. 16-8 gauge, Styles 52900 BG, BH, BN, BR----- | 1 |
| 35 | 52930 HA | Presser Foot Shank----- | 1 |
| 36 | 91 | Screw----- | 1 |
| 37 | 52930 AG | Spring Ferrule----- | 1 |
| 38 | 52930 V | Needle Hole Section Spring----- | 1 |
| 39 | 52930 AC | Chain Cutter----- | 1 |
| 40 | 604 | Screw----- | 1 |
| 41 | 22799 R | Hinge Screw----- | 1 |
| 42 | 52930 J | Needle Hole Section----- | 1 |
| 43 | 52930 AA | Presser Foot Bottom----- | 1 |
| 44 | 52926 C-16-8 | Feed Dog, 12 teeth per inch, for No. 12-12 gauge, Styles 52900 BH, BN----- | 1 |
| - | 52926 BR-12-12 | Feed Dog, 22 teeth per inch, for No. 12-12 gauge, Style 52900 BR----- | 1 |
| 45 | 52924 C-12-12 | Throat Plate, .070 inch needle hole, for No. 12-12 gauge, Styles 52900 BH, BN, BR----- | 1 |
| 46 | 52920 H-12-12 | Presser Foot, for No. 12-12 gauge, Styles 52900 BH, BN, BR----- | 1 |
| 47 | 52930 H | Presser Foot Shank----- | 1 |
| 48 | 91 | Screw----- | 1 |
| 49 | 52930 V | Needle Hole Section Spring----- | 1 |
| 50 | 52930 AG | Spring Ferrule----- | 1 |
| 51 | 52930 AC | Chain Cutter----- | 1 |
| 52 | 604 | Screw----- | 1 |
| 53 | 22799 R | Hinge Screw----- | 1 |
| 54 | 52930 J | Needle Hole Section----- | 1 |
| 55 | 52930 X | Presser Foot Bottom----- | 1 |
| 56 | 52926 A-24-8 | Feed Dog, for No. 24-8 gauge, Style 52900 BG----- | 1 |
| 57 | 52928 A-24-8 | Throat Plate, for No. 24-8 gauge, Style 52900 BG----- | 1 |
| 58 | 52920 G-24-8 | Presser Foot, for No. 24-8 gauge, Style 52900 BG----- | 1 |
| 59 | 52930 AD | Presser Foot Shank----- | 1 |
| 60 | 91 | Screw----- | 1 |
| 61 | 52930 W | Bearing Sleeve----- | 1 |
| 62 | 52930 AG | Spring Ferrule----- | 1 |
| 63 | 52930 V | Needle Hole Section Spring----- | 1 |
| 64 | 52930 AC | Chain Cutter----- | 1 |
| 65 | 604 | Screw----- | 1 |
| 66 | 22799 E | Hinge Screw----- | 1 |
| 67 | 52930 J | Needle Hole Section----- | 1 |
| 68 | 52930 AE | Presser Foot Bottom----- | 1 |

* NOTE: Tilt adjusting screw No. 22840 A, and locking nut No. 51430 F, are components of presser foot 52920 G-16-8, but are not shown on picture plate.



THREAD STAND AND ACCESSORIES

| <u>Ref. No.</u> | <u>Part No.</u> | <u>Description</u> | <u>Amt. Req.</u> |
|-----------------|-----------------|--|------------------|
| 1 | 21101 H-6 | Thread Stand, complete, for Styles 52900 BF, BG, BH, BL, BM, BN----- | 1 |
| 2 | 21114 H-6 | Eyelet Support ----- | 1 |
| 3 | 21114 L | Eyelet----- | 12 |
| 4 | 21114 M | Eyelet Locking Ring ----- | 12 |
| 5 | 22651 CD-4 | Screw ----- | 2 |
| 6 | 21104 B-24 | Thread Stand Rod----- | 1 |
| 7 | 21114 S-6 | Lead Eyelet----- | 1 |
| 8 | 21114 M | Eyelet Locking Ring ----- | 6 |
| 9 | 21114 L | Eyelet----- | 6 |
| 10 | 21104 H | Nut ----- | 1 |
| 11 | 652-16 | Washer----- | 1 |
| 12 | 21114 U | Lead Eyelet Ball Split Socket ----- | 2 |
| 13 | 21114 T | Lead Eyelet Socket Ball ----- | 1 |
| 14 | 22651 CD-4 | Screw ----- | 2 |
| 15 | 22810 | Screw ----- | 1 |
| 16 | 21114 D-6 | Spool Seat Support ----- | 1 |
| 17 | 22651 CD-5 | Screw ----- | 2 |
| 18 | 21114 A | Thread Stand Base----- | 1 |
| 19 | 22651 CD-4 | Screw ----- | 1 |
| 20 | 21104 V | Felt Pad, for 21101 H-6----- | 6 |
| | 21104 V | Felt Pad, for 21101 P-8----- | 8 |
| 21 | 21114 W | Spool Pin, for 21101 H-6 ----- | 6 |
| | 21114 W | Spool Pin, for 21101 P-8 ----- | 8 |
| 22 | 258 A | Nut, for 21101 H-6 ----- | 6 |
| | 258 A | Nut, for 21101 P-8 ----- | 8 |
| 23 | 21114 | Spool Seat Disc, for 21101 H-6----- | 6 |
| | 21114 | Spool Seat Disc, for 21101 P-8----- | 8 |
| 24 | 652-16 | Washer, for 21101 H-6----- | 6 |
| | 652-16 | Washer, for 21101 P-8----- | 8 |
| 25 | 21114 AF | Eyelet, for 21101 P-8 ----- | 4 |
| 26 | 258 A | Nut, for 21101 H-6 ----- | 6 |
| | 258 A | Nut, for 21101 P-8 ----- | 8 |
| 27 | 21101 P-8 | Thread Stand, complete, for Style 52900 BP----- | 1 |
| 28 | 21114 H-4 | Eyelet Support ----- | 1 |
| 29 | 21114 L | Eyelet----- | 8 |
| 30 | 21114 M | Eyelet Locking Ring ----- | 8 |
| 31 | 22651 CD-4 | Screw ----- | 2 |
| 32 | 21104 B-11 | Thread Stand Rod, upper ----- | 1 |
| 33 | 21127 | Coupling----- | 1 |
| 34 | 22651 CD-3 | Screw ----- | 4 |
| 35 | 21104 B-24 | Thread Stand Rod, lower ----- | 1 |
| 36 | 21114 D-4 | Spool Seat Support ----- | 2 |
| 37 | 22651 CD-5 | Screw ----- | 2 |
| 38 | 21114 S-4 | Lead Eyelet----- | 2 |
| 39 | 21114 L | Eyelet----- | 4 |
| 40 | 21114 M | Eyelet Locking Ring ----- | 4 |
| 41 | 21104 H | Nut ----- | 2 |
| 42 | 652-16 | Washer----- | 2 |
| 43 | 21114 U | Lead Eyelet Ball Split Socket ----- | 4 |
| 44 | 21114 T | Lead Eyelet Socket Ball ----- | 2 |
| 45 | 22651 CD-4 | Screw ----- | 2 |
| 46 | 22810 | Screw ----- | 2 |
| 47 | 21114 A | Thread Stand Base----- | 1 |
| 48 | 22651 CD-4 | Screw ----- | 1 |

ACCESSORIES

- * 660-240 Thread Tweezers
- * 421 D-28 Treadle Chain, for presser foot
- * 421 D-38 Treadle Chain, for Style 52900 BL only
- * 21201 Screw Driver, 9/64 inch round blade, length over-all 7 5/8 inches
- * 21388 Wrench, single end, 3/8 inch opening
- * 21388 W Wrench, double end, curved, 9/32 inch opening
- * 29402 Treadle, for Style 52900 BL only
- * 51493 BC Lifter Link, for presser foot

* The tools and accessories are not illustrated but furnished with all machines except where indicated.

NUMERICAL INDEX OF PARTS

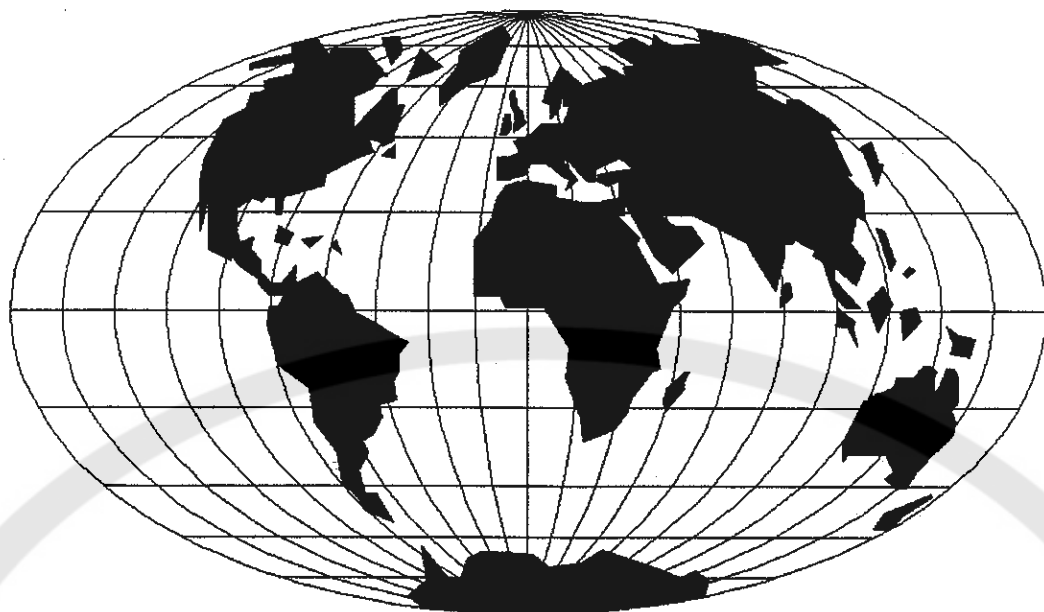
| <u>Part No.</u> | <u>Page No.</u> | <u>Part No.</u> | <u>Page No.</u> | <u>Part No.</u> | <u>Page No.</u> | <u>Part No.</u> | <u>Page No.</u> |
|-----------------|-----------------|-----------------|-----------------|-----------------|-----------------|-----------------|-----------------|
| WO3 | 17 | 666-81 | 29 | 22559 A | 17 | 22894 W | 33 |
| 8 | 25, 27, 29 | 666-82 | 29 | 22559 G | 17 | 22894 X | 17 |
| 18 | 17, 19, 21 | 666-99 | 15 | 22560 B | 11, 17, 23, | 29066 R | 17 |
| PI18 | 29 | 666-111 | 15 | | 31 | 29126 CR | 17 |
| 20 | 11, 21, 23, | 666-114 | 15 | 22562 | 33 | 29192 G | 21 |
| | 27, 29 | 666-118 | 15 | 22562 A | 17 | 29192 S | 21 |
| HA20 A | 17 | 666-138 | 31 | 22564 | 17 | 29192 U | 21 |
| CL21 | 19, 23 | 666-149 | 23, 27, 29 | 22565 C | 23, 33 | 29264 S | 35 |
| 25 CC | 25 | 666-170 | 31 | 22568 | 13 | 29264 T | 35 |
| 28 | 11, 35 | 666-179 | 15 | 22569 B | 15, 17 | 29264 U | 35 |
| 28-182 Blk | 15 | 666-201 | 15 | 22571 A | 15 | 29264 W | 35 |
| 28 C | 35 | 666-209 | 15 | 22571 B | 15 | 29348 AF | 17 |
| 50-216 Blk | 11 | 666-214 | 15 | 22572 A | 11 | 29476 AR | 29 |
| 50-458 Blk | 21 | 668-25 | 19, 33 | 22580 | 19, 23, 27, | 29476 BJ | 29 |
| 50-648 Blk | 15 | 668-28 | 19, 33 | | 29 | 29476 DR | 27 |
| 50-789 Blk | 11 | 719 | 11, 25 | 22585 A | 13 | 29476 DX | 23, 27 |
| 50 J | 35 | 907 | 23 | 22585 B | 27, 31 | 29476 GM | 29 |
| 57 WD | 37, 39 | 1740 | 21 | 22585 R | 13 | 29476 HL | 17 |
| 73 | 21 | 6042 A | 19, 31 | 22586 R | 17 | 29476 HW | 17 |
| 73 A | 17, 21 | 8372 A | 25 | 22587 | 17 | 29476 LE | 17 |
| 77 | 17, 23, 25, | 9937 | 25 | 22587 H | 17 | 35178 D | 15 |
| | 27, 31 | 12934 A | 19, 25 | 22588 A | 13 | 35582 B | 11 |
| 77 A | 33 | 14649 | 31 | 22593 | 23 | 35731 A | 11 |
| 80 | 13 | 15037 A | 19 | 22596 | 19, 33 | 35766 | 13 |
| 82 | 23, 27, 29 | 15438 B | 11 | 22597 | 11 | 39135 | 25 |
| 87 | 13 | 15438 C | 11 | 22598 C | 33 | 39158 U | 11 |
| 88 | 21, 31 | 15438 D | 11 | 22645 H | 15 | 39237 | 23 |
| 88 B | 29, 35 | 15455 | 15 | 22651 CD | 43 | 39237 D | 23 |
| 89 | 35 | 15465 F | 21 | 22706 A | 15 | 39237 G | 23 |
| 90 | 11, 15, 19, | 21101 H | 43 | 22711 | 11 | 39552 C | 33 |
| | 23, 29, 31 | 21101 P | 43 | 22716 | 35 | 39582 L | 11 |
| 91 | 37, 39, 41 | 21104 B | 43 | 22729 A | 15 | 39595 | 15 |
| 91 A | 37, 41 | 21104 H | 43 | 22729 B | 15 | 41076 D | 17 |
| 93 | 11 | 21104 V | 43 | 22729 D | 17 | 41355 U | 21 |
| 95 | 11, 17, 19 | 21114 | 43 | 22730 | 11 | 41394 A | 13 |
| HA95 | 29 | 21114 A | 43 | 22733 B | 13 | 43139 A | 25 |
| 96 | 21, 23, 27, | 21114 D | 43 | 22738 D | 19 | 43266 | 19, 33 |
| | 29 | 21114 H | 43 | 22743 | 17, 35 | 51034 A | 29 |
| 97 | 19 | 21114 L | 43 | 22747 | 23 | 51054 | 23, 27, 29 |
| 98 | 21, 25, 27, | 21114 M | 43 | 22758 B | 25 | 51134 A | 27 |
| | 31 | 21114 S | 43 | 22758 C | 35 | 51134 C | 27, 31 |
| 98 A | 11 | 21114 T | 43 | 22768 | 11, 17, 21, | 51134 J | 27, 31 |
| 109 | 19, 33 | 21114 U | 43 | | 23 | 51134 N | 29 |
| 129 | 19 | 21114 W | 43 | 22795 | 39 | 51134 P | 27 |
| 158 A | 11 | 21114 AF | 43 | 22799 E | 41 | 51134 R | 27 |
| 158 B | 11 | 21210 B | 29 | 22799 F | 41 | 51134 T | 31 |
| 166 | 27 | 21212 | 15 | 22799 M | 11 | 51134 V | 31 |
| 258 | 15, 19, 31 | BB 21375 AH | 11 | 22799 P | 39 | 51134 HA | 31 |
| 258 A | 15, 21, 27, | 21657 E | 11 | 22799 R | 37, 39, 41 | 51135 P | 31 |
| | 43 | 21657 W | 33 | 22801 | 23, 27, 29, | 51135 R | 31 |
| 269 | 19, 21, 23, | 21657 X | 15 | | 35 | 51144 | 21 |
| | 27, 29 | 21657 Y | 33 | 22810 | 43 | 51147 | 19 |
| 294 | 11, 15 | 21657 AM | 33 | 22811 B | 19 | 51216 G | 17 |
| 402 | 33 | 22513 | 11 | 22823 A | 15 | 51216 M | 17 |
| 482 | 25 | 22516 | 25 | 22823 B | 15 | 51216 N | 17, 21, 31 |
| 531 | 15, 33 | 22517 | 19 | 22829 | 21 | 51216 P | 17 |
| 538 | 27, 31 | 22517 C | 11 | 22834 | 27, 31 | 51225 W | 23, 27, 31 |
| 539 | 11 | 22519 C | 25, 27 | 22839 | 13 | 51235 | 27 |
| 604 | 37, 39, 41 | 22519 H | 21 | 22839 C | 13 | 51235 A | 27 |
| 643-127 Blk | 15 | 22519 J | 23 | 22840 A | 39 | 51235 G | 25, 27 |
| 643-263 Blk | 15 | 22524 | 13 | 22848 | 11, 13, 25 | 51236 A | 23, 27, 29 |
| 652-16 | 43 | 22526 | 19 | 22852 | 31 | 51236 B | 23 |
| 652 C-9 | 17 | 22528 | 11, 27, 29, | 22857 B | 19 | 51236 D | 23, 27, 29 |
| 660-136 | 15 | | 31 | 22863 | 27, 31 | 51236 E | 23, 27, 29 |
| 660-169 | 23, 27, 29 | 22537 | 33 | 22868 A | 23 | 51236 F | 23, 27, 29 |
| 660-202 | 17, 19, 33 | 22539 D | 11 | 22872 | 19 | 51236 G | 23, 27, 29 |
| 660-207 | 33 | 22539 H | 15 | 22882 A | 21 | 51240 D | 19 |
| 660-212 | 17 | 22541 B | 11 | 22889 A | 11 | 51240 E | 21 |
| 660-215 | 17 | 22542 | 11 | 22894 C | 29 | 51242 M | 21 |
| 660-244 | 17 | 22548 | 11, 13 | 22894 D | 23, 27, 29 | 51243 C | 17 |
| 660-246 | 17 | 22557 B | 33 | 22894 G | 17 | 51244 | 21 |
| 660-310 | 21 | | | 22894 P | 25 | 51244 B | 21 |
| 660-614 | 17 | | | | | | |
| 666-65 | 15 | | | | | | |

NOTE: Only the basic part numbers are shown in the index. For various gauges, capacities, etc. available, refer to the listings on pages indicated.

NUMERICAL INDEX OF PARTS

| Part No. | Page No. | Part No. | Page No. | Part No. | Page No. | Part No. | Page No. |
|----------|----------|----------|------------|----------|------------|----------|----------|
| 51244 L | 21 | 52882 P | 11 | 52926 BM | 39 | 52973 Q | 19 |
| 51244 N | 21 | 52882 R | 11 | 52926 BR | 41 | 52973 S | 19 |
| 51246 | 21 | 52882 S | 11 | 52928 A | 41 | 52973 T | 19 |
| 51250 D | 17 | 52882 U | 13 | 52928 BL | 37 | 52973 U | 19 |
| 51250 F | 17 | 52882 W | 11 | 52928 BR | 41 | 52973 V | 19 |
| 51254 C | 15 | 52882 Z | 11 | 52930 | 41 | 52973 W | 19 |
| 51254 K | 17 | 52882 AA | 11 | 52930 C | 37, 41 | 52973 X | 19 |
| 51256 C | 33 | 52882 AC | 11 | 52930 H | 39, 41 | 52973 Z | 19 |
| 51257 M | 33 | 52882 AD | 11 | 52930 J | 37, 41 | 52978 H | 11 |
| 51280 J | 13 | 52882 AF | 13 | 52930 V | 37, 39, 41 | 52978 T | 11 |
| 51283 H | 33 | 52883 R | 15 | 52930 W | 41 | 52978 U | 11 |
| 51290 T | 15 | 52883 S | 33 | 52930 X | 41 | 52978 W | 11 |
| 51292 | 19 | 52885 L | 11 | 52930 Y | 41 | 52980 | 13 |
| 51292 A | 19, 33 | 52888 B | 33 | 52930 Z | 41 | 52980 A | 13 |
| 51292 C | 19, 33 | 52889 A | 33 | 52930 AA | 41 | 52980 C | 13 |
| 51292 D | 19, 33 | 52890 C | 15 | 52930 AC | 37, 39, 41 | 52982 D | 13 |
| 51292 F | 19, 33 | 52891 B | 15 | 52930 AD | 41 | 52982 E | 13 |
| 51292 G | 33 | 52894 K | 15 | 52930 AE | 41 | 52982 F | 13 |
| 51294 K | 15 | 52894 AB | 15 | 52930 AG | 37, 39, 41 | 52985 | 11 |
| 51294 U | 15 | 52894 AD | 15 | 52930 AJ | 37 | 52985 A | 11 |
| 51294 Y | 15 | 52894 AE | 15 | 52930 AK | 37 | 52992 A | 33 |
| 51295 B | 15 | 52894 AK | 15 | 52930 AL | 39 | 52994 U | 15 |
| 51380 A | 13 | 52894 AN | 11 | 52930 AM | 39 | 52994 V | 15 |
| 51382 A | 13 | 52901 J | 13 | 52930 AR | 41 | 52994 AA | 15 |
| 51430 F | 39 | 52901 K | 13 | 52930 BL | 37 | 52994 AC | 15 |
| 51435 | 25 | 52901 L | 13 | 52930 HA | 41 | 52994 AD | 15 |
| 51435 B | 25 | 52901 M | 13 | 52930 HB | 37 | 52994 AG | 15 |
| 51491 C | 33 | 52902 B | 13 | 52931 | 35 | 53636 C | 19 |
| 51493 D | 15 | 52902 C | 13 | 52931 A | 35 | 53688 | 33 |
| 51493 E | 15 | 52904 | 11 | 52931 C | 35 | 53783 A | 33 |
| 51493 AG | 15 | 52904 A | 11 | 52931 G | 11 | 53783 L | 33 |
| 51493 AH | 15 | 52905 BH | 41 | 52934 | 31 | 53783 M | 33 |
| 51493 AZ | 15 | 52905 BJ | 39 | 52934 A | 29 | 53783 N | 33 |
| 51493 BB | 15 | 52905 BL | 37 | 52934 B | 31 | 54158 | 17 |
| 51493 BG | 15 | 52905 BM | 39 | 52934 C | 31 | 54158 A | 17 |
| 51493 BH | 15 | 52908 D | 21 | 52934 D | 29 | 55235 D | 19, 31 |
| 51493 BJ | 15 | 52908 F | 21 | 52935 | 31 | 55235 E | 19, 31 |
| 51493 BK | 11 | 52909 A | 21 | 52942 A | 17 | 55244 G | 21 |
| 51493 BP | 17 | 52909 B | 21 | 52942 H | 35 | 56315 A | 17 |
| 51493 BQ | 15 | 52909 D | 21 | 52942 J | 35 | 56334 E | 27 |
| 51745 | 21 | 52909 E | 21 | 52942 K | 35 | 56341 E | 21 |
| 51892 | 33 | 52910 | 21 | 52942 P | 21 | 56341 F | 21 |
| 52836 A | 17 | 52913 | 21 | 52942 R | 21 | 56341 G | 21 |
| 52794 G | 15 | 52913 A | 21 | 52942 W | 15 | 56341 M | 21 |
| 52808 E | 21 | 52913 B | 21 | 52942 X | 15 | 56343 D | 17 |
| 52822 B | 23 | 52916 | 17 | 52942 Y | 11 | 56350 D | 17 |
| 52830 G | 37, 39 | 52917 | 35 | 52943 L | 17 | 56350 E | 17 |
| 52834 | 23 | 52917 B | 35 | 52944 A | 11 | 56350 F | 17 |
| 52834 H | 23 | 52918 | 35 | 52944 C | 17 | 56354 D | 17 |
| 52835 | 25 | 52918 A | 35 | 52944 D | 11 | 56382 AC | 11 |
| 52835 G | 25 | 52920 F | 41 | 52944 S | 11 | 56390 E | 15 |
| 52835 K | 25 | 52920 G | 41 | 52944 U | 15 | 56958 | 17 |
| 52835 N | 25 | 52920 H | 41 | 52945 L | 33 | 56958 A | 17 |
| 52835 Q | 25 | 52920 BG | 41 | 52945 M | 33 | 57770 | 11 |
| 52835 S | 23 | 52920 BL | 37 | 52947 A | 17 | 57836 F | 25 |
| 52835 U | 25 | 52920 BP | 39 | 52949 A | 13 | 57885 | 11 |
| 52835 V | 23 | 52921 B | 17 | 52950 A | 13 | 57885 B | 11 |
| 52836 | 25 | 52922 C | 27 | 52950 B | 13 | 57902 | 13 |
| 52836 C | 25 | 52922 G | 29 | 52950 H | 13 | 57978 | 11 |
| 52836 H | 25 | 52923 C | 23, 27, 29 | 52951 | 17 | 57978 A | 11 |
| 52836 P | 15 | 52924 C | 41 | 52951 A | 17 | 60077 K | 19 |
| 52836 R | 15 | 52924 D | 41 | 52951 B | 17 | 61267 G | 25 |
| 52841 A | 21 | 52924 BH | 41 | 52951 C | 17 | K67615 | 39 |
| 52842 A | 17 | 52924 BJ | 39 | 52952 B | 17 | K67719 | 39 |
| 52842 G | 35 | 52924 BL | 37 | 52952 C | 19 | K67893 | 39 |
| 52846 A | 33 | 52925 C | 23 | 52953 A | 23 | K68042 | 33 |
| 52847 | 33 | 52925 D | 23 | 52954 B | 15 | K68076 | 39 |
| 52848 B | 19 | 52925 E | 35 | 52957 | 11 | K68077 | 39 |
| 52848 C | 19 | 52925 G | 35 | 52957 A | 11 | K68413 | 39 |
| 52849 | 19 | 52926 A | 41 | 52958 | 11 | K68719 | 29 |
| 52849 B | 19 | 52926 C | 41 | 52958 G | 11 | K70976 | 39 |
| 52849 C | 19 | 52926 BB | 41 | 52970 E | 19 | 80557 | 33 |
| 52855 A | 19 | 52926 BH | 41 | 52973 K | 19 | 92127 | 31 |
| 52855 G | 19 | 52926 BL | 37 | 52973 L | 19 | | |

NOTE: Only the basic part numbers are shown in the index. For various gauges, capacities, etc. available, refer to the listing on pages indicated.



WORLDWIDE SALES AND SERVICE

Union Special Corporation maintains sales and service facilities throughout the world. These offices will aid you in the selection of the right sewing equipment for your particular operation. Union Special Corporation representatives and service technicians are factory trained and are able to serve your needs promptly and efficiently. Whatever your location, there is a qualified representative to serve you.

Brussels, Belgium
Charlotte, N.C.
El Paso, TX
Hong Kong, China
Huntley, IL
Leicester, England
Lille, France
Miami, FL
Milan, Italy
Möglingen, Germany
Montreal, Quebec
Osaka, Japan
Santa Fe Springs, CA

Other Representatives throughout
all parts of the world.



Union Special
INDUSTRIAL SEWING EQUIPMENT