

A large, light gray watermark logo for Singer is centered on the page. It features a semi-circular arch at the top and bottom, with the word "SINGER" in a bold, sans-serif font in the middle. Below "SINGER" are the model numbers "211G446, G451, G457" in a smaller, bold, sans-serif font. At the bottom of the arch is the word "CSMP" in a very large, bold, sans-serif font.

SINGER

211G446, G451, G457

CSMP

TEMPORARY

ILLUSTRATED

PARTS CARD

for

SINGER

MACHINE

211 G 446-01

211 G 446-02

211 G 451-01

211 G 451-02

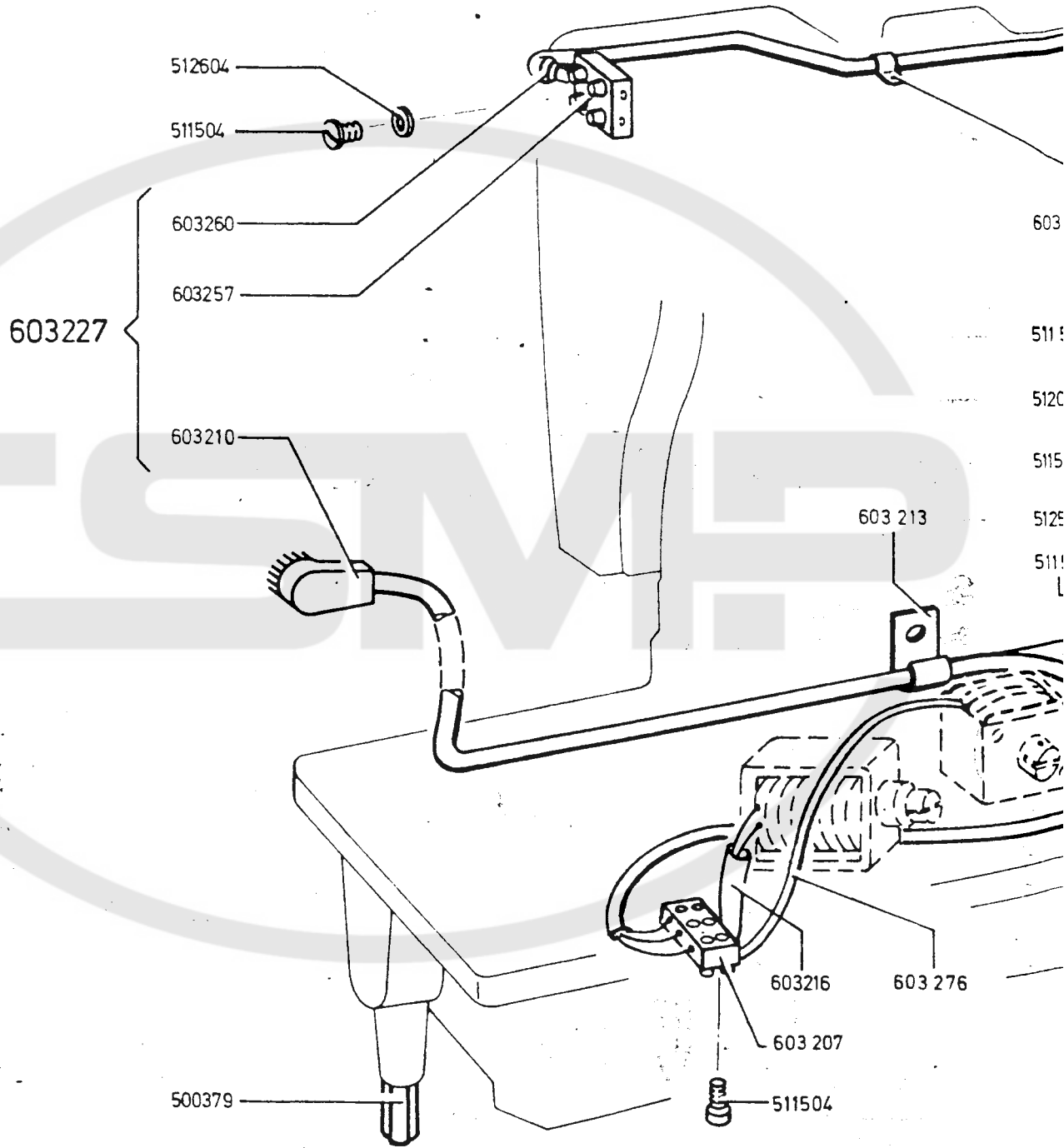
211 G 457-01

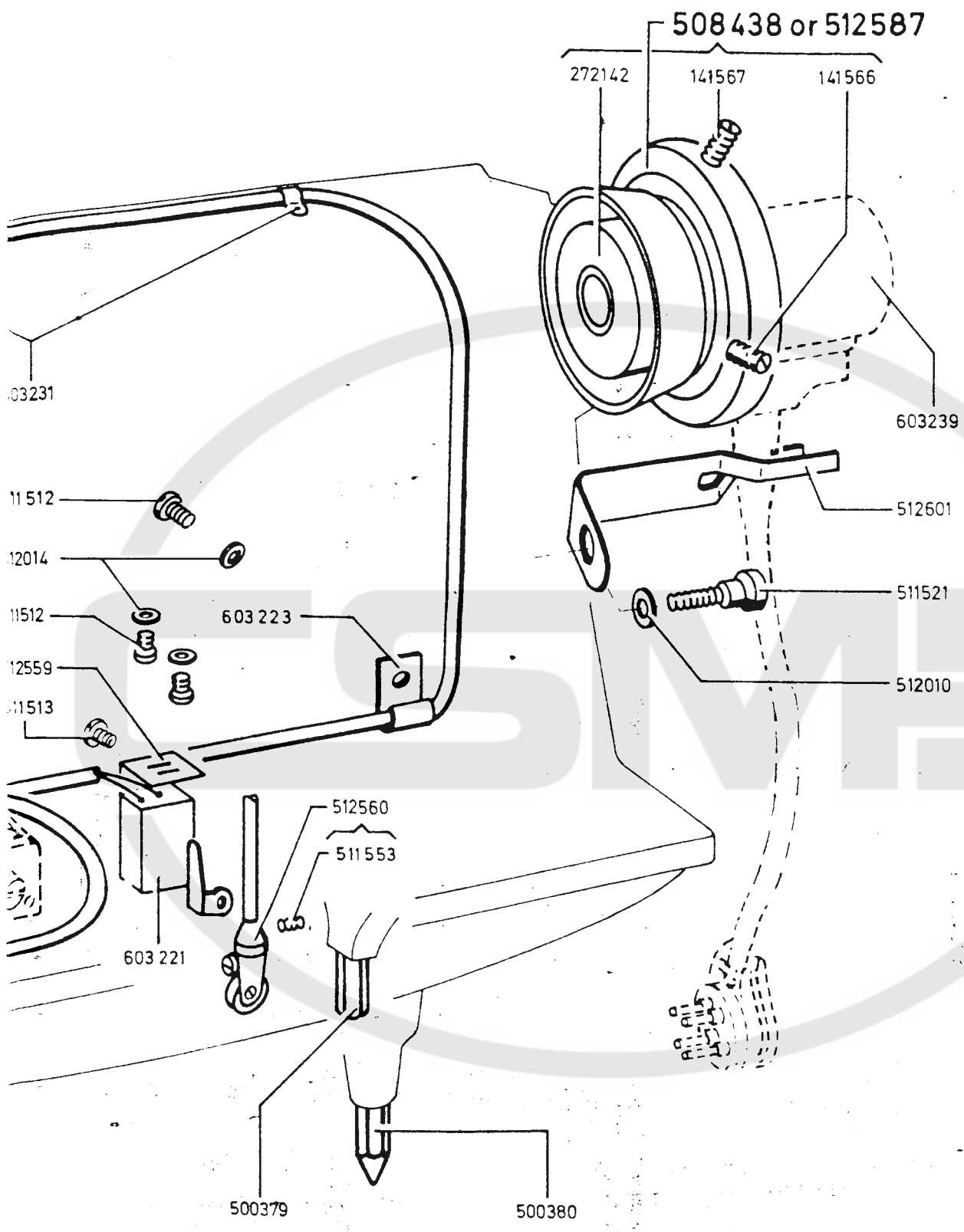
211 G 457-02

PLEASE DISREGARD INFORMATION ON 211 G 446;
MACHINE WAS DELETED.

(369)

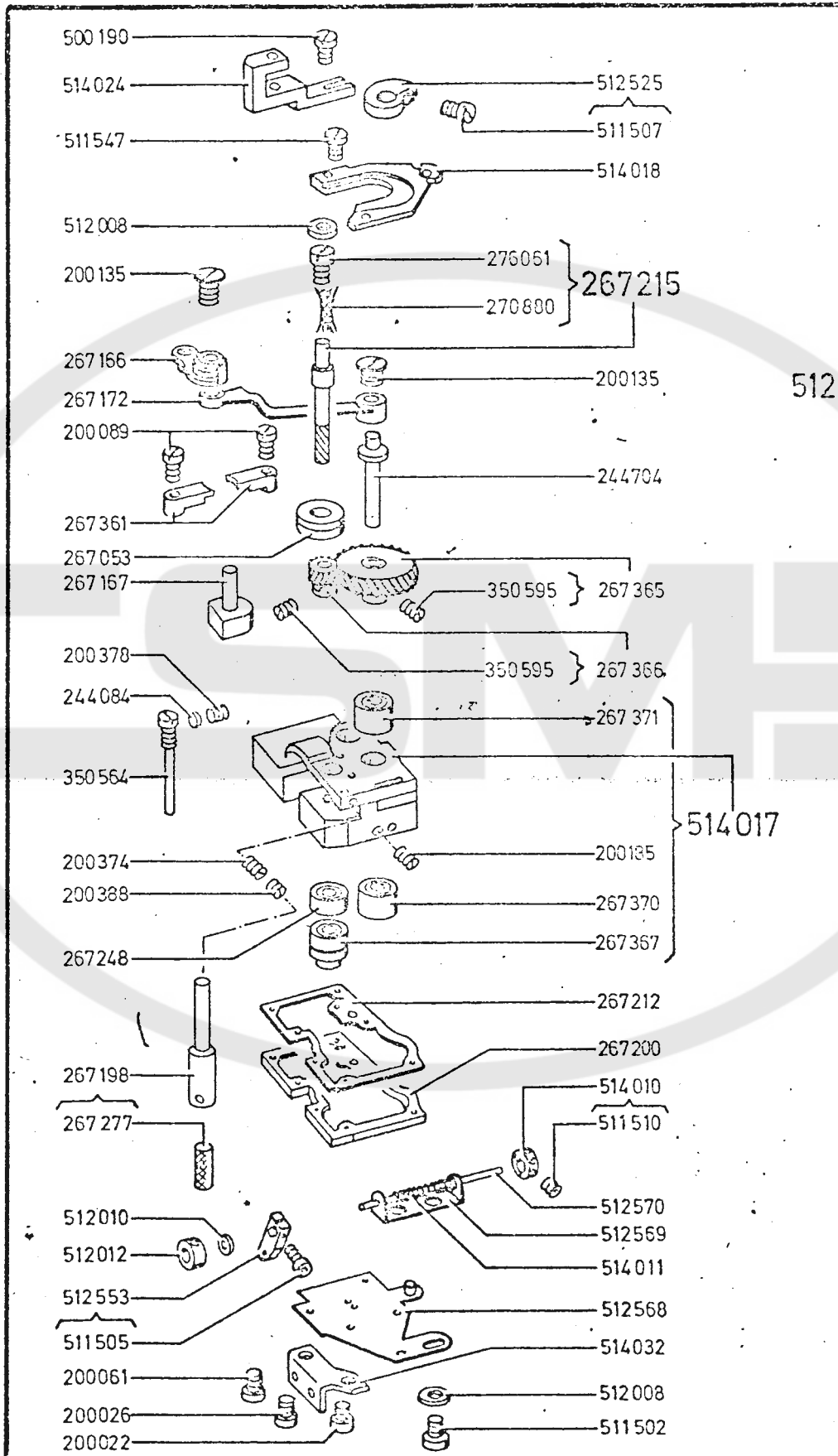
PARTS FOR MACHINE 211G451-02 AND 211G457-02





3

PARTS FOR MACHINE 211 G 446-01, 211G 446-02
 211 G 451- 01, 211G 451-02
 211 G 457- 01, 211G 457-02



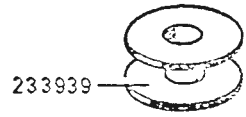
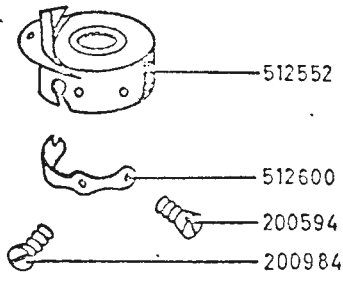
PARTS FOR MACHINE CLASS 211

(-01 = USA, -02 = EUROPE)

| PART NO. | G 446 | | G 451 | | G 457 | | NAME |
|------------|-------|-----|-------|-----|-------|-----|--|
| | -01 | -02 | -01 | -02 | -01 | -02 | |
| 140434-833 | x | x | x | x | x | x | HOOK SET SCREW (2) |
| 200591-819 | x | x | x | x | x | x | THREAD GUIDE SCREW (2) |
| 200594-805 | x | x | x | x | x | x | TENSION SPRING SCREW (2) |
| 200984-803 | x | x | x | x | x | x | TENSION SPRING ADJUSTING SCREW |
| 201253-806 | x | x | x | x | x | x | HOOK GIB SCREW (2) |
| 201409-806 | x | x | x | x | x | x | HOOK NEEDLE GUARD SCREW (2) |
| +202056 | x | x | x | x | x | x | BOBBIN CASE LATCH PIN |
| 203211 | x | x | x | x | x | x | BOBBIN CASE BASE LATCH |
| 203212 | x | x | x | x | x | x | BOBBIN CASE BASE LATCH PLUNGER |
| 203213 | x | x | x | x | x | x | BOBBIN CASE BASE LATCH SPRING |
| 203216 | x | x | x | x | x | x | BOBBIN CASE WASHER (CLOTH) |
| 203525 | x | x | x | x | x | x | HOOK GIB |
| 233939 | x | x | x | x | x | x | BOBBIN |
| 235769 | x | x | x | x | x | x | BOBBIN CASE BASE WITH +202056, 203211, 203212, 203213 AND 203216 |
| 267355 | x | x | x | x | x | x | HOOK BODY WITH TWO 140434 |
| 267359 | x | x | x | x | x | x | HOOK NEEDLE GUARD |
| 267360 | x | x | x | x | x | x | HOOK THREAD GUIDE |
| 350574-806 | x | x | x | x | x | x | HOOK HEIGHT ADJUSTING SCREW |
| 512551 | x | x | x | x | x | x | BOBBIN CASE WITH 200594, 512552, 200984 AND 512600 |
| 512552 | x | x | x | x | x | x | BOBBIN CASE |
| 512555 | x | x | x | x | x | x | HOOK CPL. NOS. 203525, 267355, 267359, 267360, 350574 AND TWO EACH 200591, 201253 AND 201409 |
| 512598 | x | x | x | x | x | x | BOBBIN CASE CPL. NOS. 235769 AND 512551 |
| 512599 | x | x | x | x | x | x | HOOK AND BOBBIN CASE CPL. NOS. 512555 AND 512598 |
| 512600 | x | x | x | x | x | x | BOBBIN CASE TENSION SPRING |

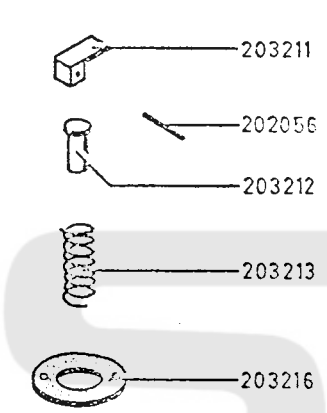
PARTS MARKED WITH AN ASTERISK (+) ARE FURNISHED
ONLY WHEN REPAIRS ARE MADE AT THE FACTORY.

Parts for Machine 211 G 446-01, 211 G 446-02
 211 G 451-01, 211 G 451-02
 211 G 457-01, 211 G 457-02

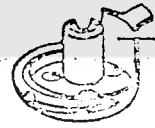


512551

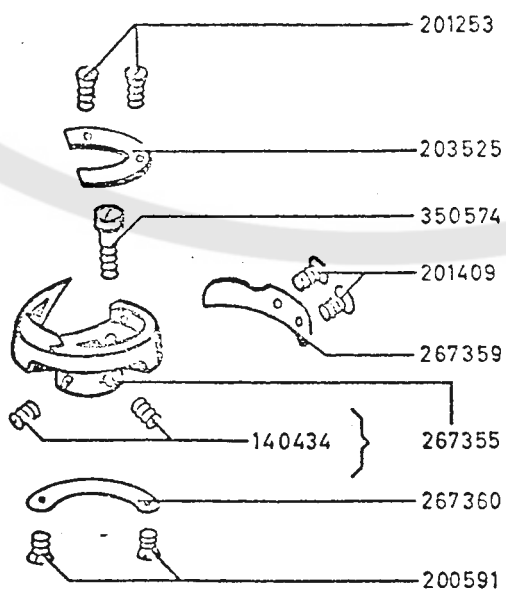
512598



235769



512599



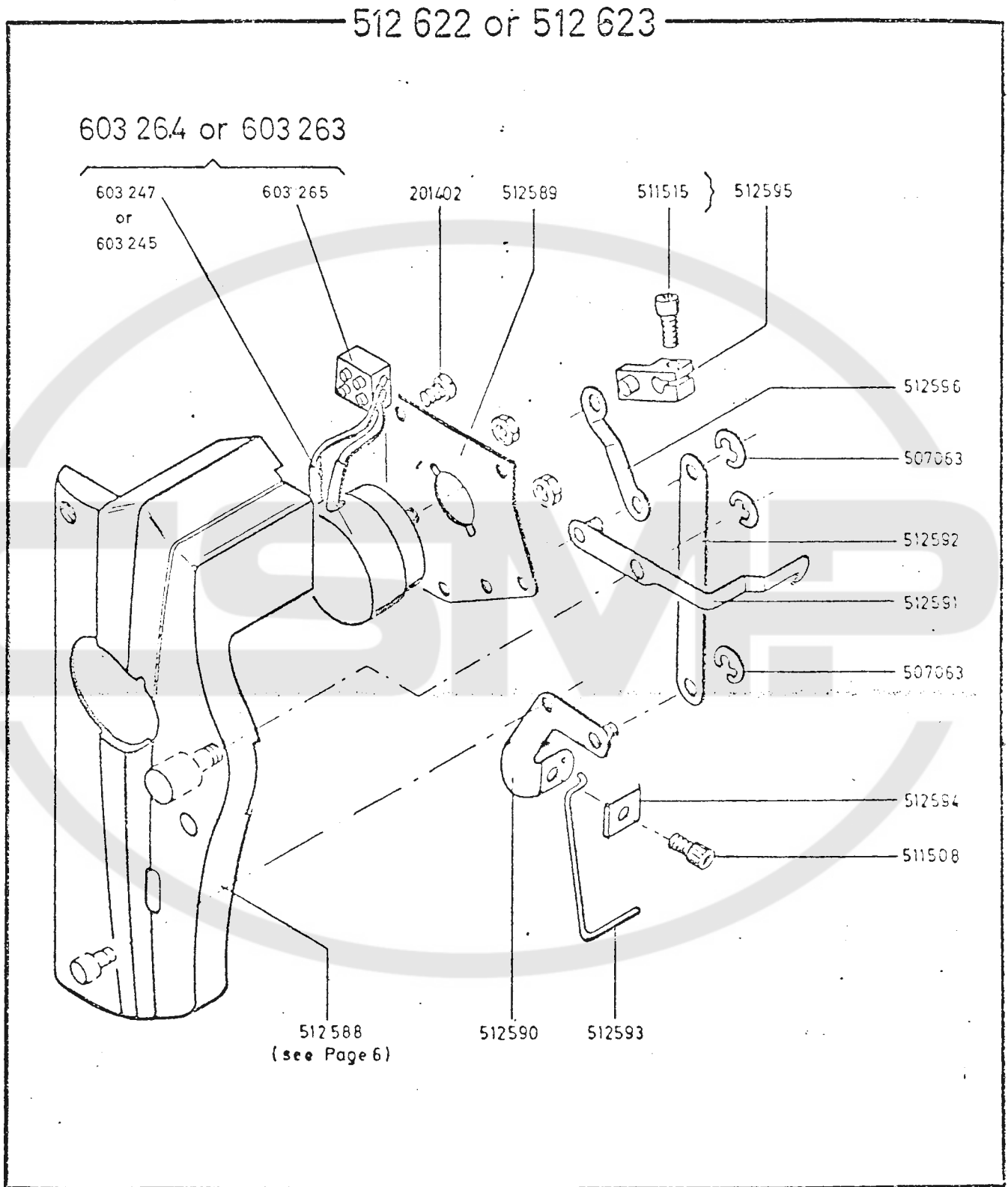
512555

PARTS FOR MACHINE CLASS 211

(-01 = USA, -02 = EUROPE)

| PART NO. | G 446 | | G 451 | | G 457 | | NAME |
|------------|-------|-----|-------|-----|-------|-----|---|
| | -01 | -02 | -01 | -02 | -01 | -02 | |
| 201402-819 | - | - | x | x | x | x | SOLENOID PLATE SCREW (5) |
| 507063 | - | - | x | x | x | x | RETAINING RING (3) |
| 511508-869 | - | - | x | x | x | x | THREAD WIPER CLAMP SCREW |
| 511515-869 | - | - | x | x | x | x | CRANK PINCH SCREW |
| 512588 | - | - | x | x | x | x | FACE PLATE |
| 512589 | - | - | x | x | x | x | SOLENOID PLATE |
| 512590 | - | - | x | x | x | x | BRACKET LINK |
| 512591 | - | - | x | x | x | x | THREAD PULLER |
| 512592 | - | - | x | x | x | x | CONNECTION LINK |
| 512593 | - | - | x | x | x | x | THREAD WIPER |
| 512594 | - | - | x | x | x | x | THREAD WIPER CLAMP |
| 512595 | - | - | x | x | x | x | CRANK WITH 511515 |
| 512596 | - | - | x | x | x | x | CONNECTION LINK |
| 512622 | - | - | x | - | x | - | FACE PLATE WITH ROTARY SOLENOID CPL. NOS. 511508, 512588, 512589, 512590, 512591, 512592, 512593, 512594, 512595, 512596, 603264 THREE 507063 AND FIVE 201402 |
| 512623 | - | - | - | x | - | x | FACE PLATE WITH ROTARY SOLENOID CPL. NOS. 511508, 512588, 512589, 512590, 512591, 512592, 512593, 512594, 512595, 512596, 603263, THREE 507063 AND FIVE 201402 |
| 603245 | - | - | - | x | - | x | ROTARY SOLENOID |
| 603247 | - | - | x | - | x | - | ROTARY SOLENOID |
| 603263 | - | - | - | x | - | x | ROTARY SOLENOID CPL. NOS. 603245 AND 603265 |
| 603264 | - | - | x | - | x | - | ROTARY SOLENOID CPL. NOS. 603247 AND 603265 |
| 603265 | - | - | x | x | x | x | PLUG MALE (TWO POLE) |

Parts for Machine 211 G 451-01, 211 G 451-02
211 G 457-01, 211 G 457-02



PARTS FOR MACHINE CLASS 211

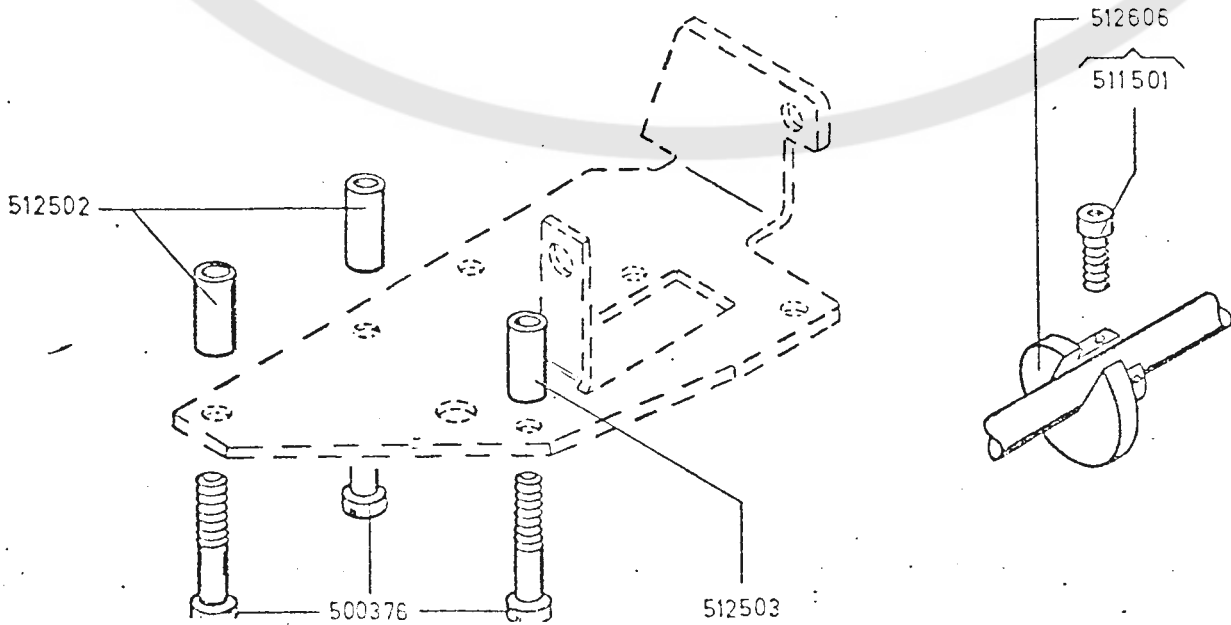
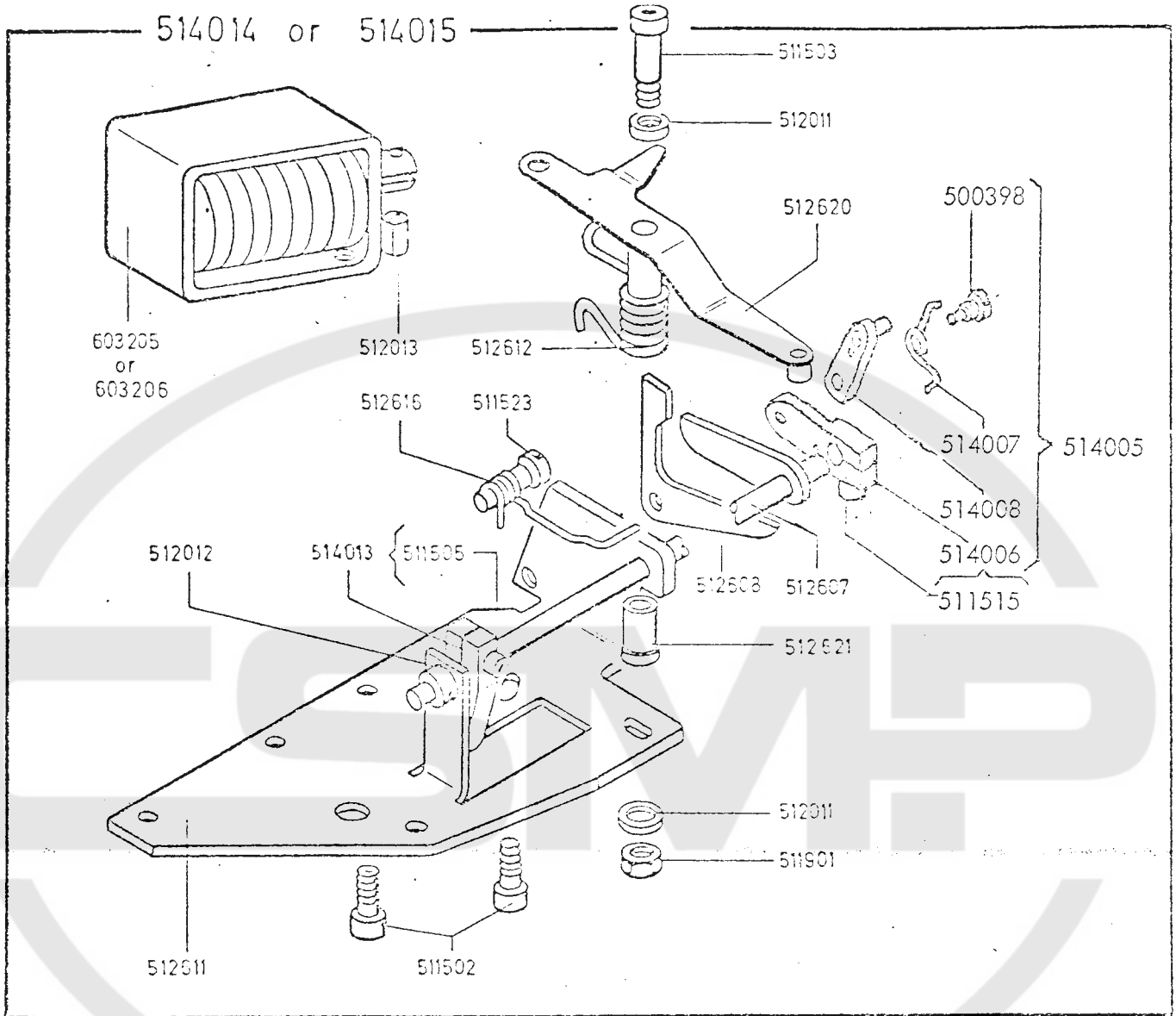
(-01 = USA, -02 = EUROPE)

G 446 G 451 G 457
 PART NO. -01 -02 -01 -02 -01 -02

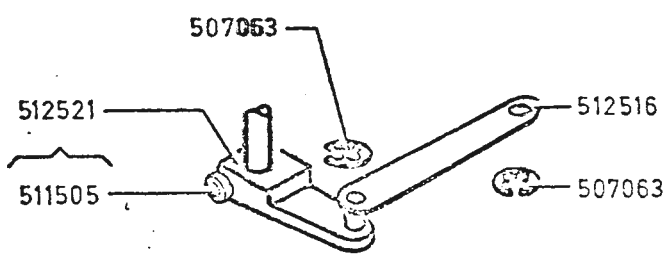
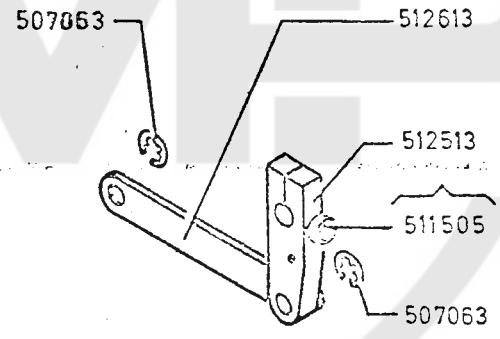
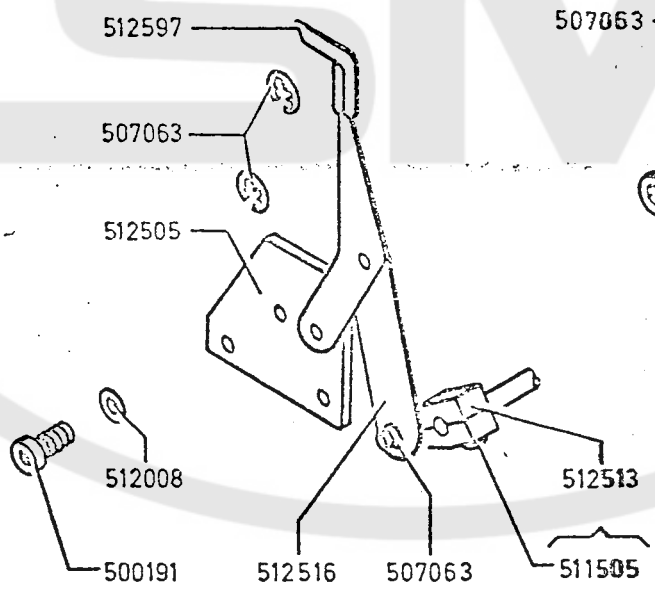
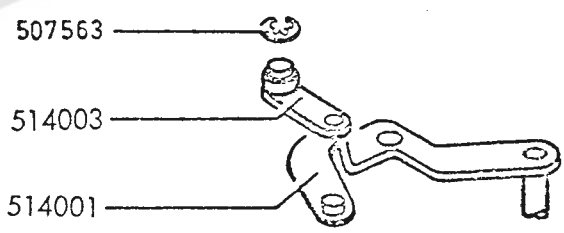
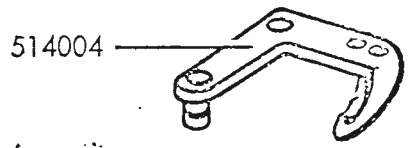
NAME

| PART NO. | -01 | -02 | -01 | -02 | -01 | -02 | NAME |
|------------|-----|-----|-----|-----|-----|-----|---|
| 500376-850 | x | x | x | x | x | x | SOLENOID MOUNTING PLATE SCREW (3) |
| 511501-869 | x | x | x | x | x | x | THREAD CUTTING KNIFE CAM SCREW (2) |
| 511502-869 | x | x | x | x | x | x | THREAD PULLER SOLENOID FASTENING SCREW (2) |
| 511503-869 | x | x | x | x | x | x | THREAD PULLER ACTUATING LEVER GUIDE SLEEVE SCREW |
| 511505-869 | x | x | x | x | x | x | THREAD CUTTING KNIFE CONTROL SHAFT CRANK PINCH SCREW |
| 511505-869 | x | x | x | x | x | x | THREAD CUTTING KNIFE CONTROL SHAFT CAM FOLLOWING CRANK PINCH SCREW |
| 511523-850 | x | x | x | x | x | x | THREAD PULLER RETAINING PAWL SCREW |
| 511901-830 | x | x | x | x | x | x | THREAD PULLER ACTUATING LEVER TORSION SPRING SLEEVE NUT |
| 512011 | x | x | x | x | x | x | THREAD PULLER ACTUATING LEVER TORSION GUIDE SLEEVE WASHER (2) |
| 512012 | x | x | x | x | x | x | THREAD CUTTING KNIFE CONTROL SHAFT POSITION COLLAR |
| 512013 | x | x | x | x | x | x | THREAD PULLER ACTUATING LEVER CONNECTING SLEEVE |
| 512502 | x | x | x | x | x | x | SOLENOID MOUNTING PLATE SPACER SLEEVE (2) |
| 512503 | x | x | x | x | x | x | SOLENOID MOUNTING PLATE SPACER SLEEVE |
| 512513 | x | x | x | x | x | x | THREAD CUTTING KNIFE CONTROL SHAFT CRANK WITH 511505 |
| 512605 | x | x | x | x | x | x | THREAD CUTTING KNIFE CONTROL SHAFT CAM FOLLOWING CRANK WITH 511505 |
| 512606 | x | x | x | x | x | x | THREAD CUTTING KNIFE CAM WITH TWO 511501 |
| 512607 | x | x | x | x | x | x | THREAD CUTTING KNIFE CONTROL SHAFT |
| 512608 | x | x | x | x | x | x | THREAD PULLER RETAINING PAWL |
| 512611 | x | x | x | x | x | x | SOLENOID MOUNTING PLATE |
| 512612 | x | x | x | x | x | x | THREAD PULLER ACTUATING LEVER TORSION SPRING |
| 512614 | x | - | x | - | x | - | SOLENOID MOUNTING PLATE CPL. NOS. 511503, 511523, 511901, 512012, 512013, 512513, 512605, 512607, 512608, 512611, 512612, 512616, 512620, 512621, 603206 AND TWO EACH 511502 AND 512011 |
| 512615 | - | x | - | x | - | x | SOLENOID MOUNTING PLATE CPL. NOS. 511503, 511523, 511901, 512012, 512013, 512513, 512605, 512607, 512608, 512611, 512612, 512616, 512620, 512621, 603206 AND TWO EACH 511502 AND 512011 |
| 512616 | x | x | x | x | x | x | THREAD PULLER RETAINING PAWL TORSION SPRING |
| 512620 | x | x | x | x | x | x | THREAD PULLER ACTUATING LEVER |
| 512621 | x | x | x | x | x | x | THREAD PULLER ACTUATING LEVER GUIDE BUSHING |
| 603205 | - | x | - | x | - | x | THREAD PULLER SOLENOID, 24 V, 75 W |
| 603206 | x | - | x | - | x | - | THREAD PULLER SOLENOID, 100 V, 100 W |

Parts for Machine 211 G 446-01, 211 G 446-02
211 G 451-01, 211 G 451-02
211 G 457-01, 211 G 457-02



Parts for Machine 211 G 446-01, 211 G 446-02
211 G 451-01, 211 G 451-02
211 G 457-01, 211 G 457-02



PARTS FOR MACHINE CLASS 211

(-01 = USA, -02 = EUROPE)

| PART NO. | G 446 | | G 451 | | G 457 | | NAME |
|------------|-------|-----|-------|-----|-------|-----|---|
| | -01 | -02 | -01 | -02 | -01 | -02 | |
| 200160-805 | x | - | - | - | - | - | THREAD GUIDE (TOP OF ARM) SCREW |
| 244729 | x | - | - | - | - | - | THREAD GUIDE (TOP OF ARM) |
| 500379-819 | x | - | - | - | - | - | MACHINE LEG (2) |
| 500380-819 | x | - | - | - | - | - | MACHINE LEG |
| 511504-830 | x | - | - | - | - | - | ELECTRIC TERMINAL SCREW |
| 511512-869 | x | - | - | - | - | - | MICRO SWITCH MOUNTING BRACKET SCREW (2) |
| 511513-869 | x | - | - | - | - | - | MICRO SWITCH MOUNTING SCREW (2) |
| 511514-869 | x | - | - | - | - | - | MICRO SWITCH DRIVING CAM SET SCREW |
| 512014 | x | - | - | - | - | - | MICRO SWITCH SET SCREW SPACER |
| 512559 | x | - | - | - | - | - | MICRO SWITCH MOUNTING BRACKET |
| 512560 | x | - | - | - | - | - | MICRO SWITCH DRIVING CAM WITH 511514 |
| 603212 | x | - | - | - | - | - | CABLE CLAMP |
| 603216 | x | - | - | - | - | - | INSULATOR TUBING |
| 603218 | x | - | - | - | - | - | RING TERMINAL FOR GROUND WIRE |
| 603221 | x | - | - | - | - | - | MICRO SWITCH |
| 603226 | x | - | - | - | - | - | AMPHENOL PLUG |
| 603262 | x | - | - | - | - | - | WIRE HARNES CPL. NOS. 603218 AND 603226 |
| 603266 | x | - | - | - | - | - | CABLE CLAMP |
| 603267 | x | - | - | - | - | - | ELECTRICAL TERMINAL |
| 795595-003 | x | - | - | - | - | - | SYNCHRONIZER (DIEHL) |

PARTS FOR MACHINE CLASS 211

(-01 = USA, -02 = EUROPE)

| PART NO. | G 446 | | G 451 | | G 457 | | NAME |
|------------|-------|-----|-------|-----|-------|-----|---|
| | -01 | -02 | -01 | -02 | -01 | -02 | |
| 141566-833 | x | x | - | - | - | - | MACHINE PULLEY POSITION SCREW |
| 141567-833 | x | x | - | - | - | - | MACHINE PULLEY SET SCREW |
| 200160-805 | - | x | - | - | - | - | THREAD GUIDE (TOP OF ARM) SCREW |
| 244729 | - | x | - | - | - | - | THREAD GUIDE (TOP OF ARM) |
| 272142 | x | x | - | - | - | - | ARM SHAFT-BALL BEARING (BACK) DOUBLE SHIELDED BEARING |
| 500379-819 | - | x | - | - | - | - | MACHINE -LEG (2) |
| 500380-819 | - | x | - | - | - | - | MACHINE LEG |
| 511504-830 | - | x | - | - | - | - | ELECTRIC TERMINAL SCREW |
| 511512-869 | - | x | - | - | - | - | MICRO SWITCH MOUNTING BRACKET SCREW (2) |
| 511513-869 | - | x | - | - | - | - | MICRO SWITCH MOUNTING SCREW (2) |
| 511514-869 | - | x | - | - | - | - | MICRO SWITCH DRIVING CAM SET SCREW |
| 511521-869 | - | x | - | - | - | - | SYNCHRONIZER BRACKET SCREW |
| 512010 | - | x | - | - | - | - | SYNCHRONIZER BRACKET WASHER |
| 512014 | - | x | - | - | - | - | MICRO SWITCH SET SCREW SPACE |
| 512559 | - | x | - | - | - | - | MICRO SWITCH MOUNTING BRACKET |
| 512560 | - | x | - | - | - | - | MICRO SWITCH DRIVING CAM WITH 511514 |
| 512582 | x | x | - | - | - | - | MACHINE PULLEY CPL. NOS. 141566, 141567 AND 272142 |
| 512601 | - | x | - | - | - | - | SYNCHRONIZER BRACKET |
| 603210 | - | x | - | - | - | - | PLUG (10 PRONGS) |
| 603212 | - | x | - | - | - | - | CABLE CLAMP |
| 603216 | - | x | - | - | - | - | INSULATOR TUBING |
| 603218 | - | x | - | - | - | - | RING TERMINAL FOR GROUND W/IRE |
| 603221 | - | x | - | - | - | - | MICRO SWITCH |
| 603239 | - | x | - | - | - | - | SYNCHRONIZER "B 1" |
| 603259 | - | x | - | - | - | - | WIRE HARNES CPL. NOS. 603210 AND 603218 |
| 603266 | - | x | - | - | - | - | CABLE CLAMP |
| 603267 | - | x | - | - | - | - | ELECTRICAL TERMINAL |

PARTS FOR MACHINE CLASS 211

(-01 = USA, -02 = EUROPE)

| PART NO. | -01 | -02 | -01 | -02 | -01 | -02 | NAME |
|------------|-----|-----|-----|-----|-----|-----|---|
| NO. 12 | x | x | x | x | x | x | THREAD UNWINDER WOOD SCREW 7/8 INCH (3) |
| 150203 | x | x | x | x | x | x | THREAD UNWINDER SPOOL REST CUSHION (FELT) (3) |
| 201254-803 | x | x | x | x | x | x | THREAD UNWINDER SPOOL REST SET SCREW (FOR TWO SPOOLS) |
| 228764 | x | x | x | x | x | x | THREAD UNWINDER SPOOL PIN (3) |
| 228765 | x | x | x | x | x | x | THREAD UNWINDER SPOOL REST (FOR ONE SPOOL) (FLAT) WITH 201254 |
| 228766 | x | x | x | x | x | x | THREAD UNWINDER SPOOL REST (FOR TWO SPOOLS) (FLAT) WITH 201254 |
| 228767 | x | x | x | x | x | x | THREAD UNWINDER SPOOL REST ROD |
| 228768 | x | x | x | x | x | x | THREAD UNWINDERSPOOL STAND |
| 228771 | x | x | x | x | x | x | THREAD UNWINDER THREAD GUIDE HOLDER (FOR THREE GUIDES) |
| 228774 | x | x | x | x | x | x | THREAD UNWINDER THREAD GUIDE ROD |
| 503728 | x | x | x | x | x | x | THREAD UNWINDER THREAD GUIDE |
| 503781 | x | x | x | x | x | x | THREAD UNWINDER CPL. (FOR THREE SPOOLS) |

NOS. 228765 TO 228768, 228771, 228774, TWO 503728,
THREE EACH 150203, 228764 AND WOOD SCREWS 7/8
INCH NO. 12

PARTS FOR MACHINE CLASS 211

(-01 = USA, -02 = EUROPE)

| PART NO. | G 446 | | G 451 | | G 457 | | NAME |
|------------|-------|-----|-------|-----|-------|-----|--|
| | -01 | -02 | -01 | -02 | -01 | -02 | |
| 200160-819 | - | - | x | - | x | - | THREAD GUIDE (TOP OF ARM SCREW) |
| 244729 | - | - | x | - | x | - | THREAD GUIDE (TOP OF ARM) |
| 500379-819 | - | - | x | - | x | - | MACHINE LEG (2) |
| 500380-819 | - | - | x | - | x | - | MACHINE LEG |
| 511504-830 | - | - | x | - | x | - | ELECTRIC TERMINAL SCREW |
| 511504-830 | - | - | x | - | x | - | BUSHING FEMALE SCREW |
| 511512-869 | - | - | x | - | x | - | MICRO SWITCH MOUNTING BRACKET SCREW (2) |
| 511513-869 | - | - | x | - | x | - | MICRO SWITCH MOUNTING SCREW (2) |
| 511514-869 | - | - | x | - | x | - | MICRO SWITCH DRIVING CAM SET SCREW |
| 512014 | - | - | x | - | x | - | MICRO SWITCH MOUNTING BRACKET SCREW WASHER (2) |
| 512559 | - | - | x | - | x | - | MICRO SWITCH MOUNTING BRACKET |
| 512560 | - | - | x | - | x | - | MICRO SWITCH DRIVING CAM WITH 511514 |
| 512604 | - | - | x | - | x | - | BUSHING FEMALE SCREW WASHER 603257 AND 603260 |
| 603216 | - | - | x | - | x | - | INSULATOR TUBING |
| 603218 | - | - | x | - | x | - | RING TERMINAL FOR GROUND WIRE |
| 603221 | - | - | x | - | x | - | MICRO SWITCH |
| 603226 | - | - | x | - | x | - | AMPHENOL PLUG |
| 603228 | - | - | x | - | x | - | WIRE HARNESS CPL. NOS. 603218, 603226 603257 AND 603260 |
| 603231 | - | - | x | - | x | - | CABLE CLAMP (CLOSED) (2) |
| 603233 | - | - | x | - | x | - | CABLE CLAMP |
| 603257 | - | - | x | - | x | - | BUSHING FEMALE (TWO POLE) |
| 603260 | - | - | x | - | x | - | CABLE LEAD IN HOSE |
| 603266 | - | - | x | - | x | - | CABLE CLAMP |
| 603267 | - | - | x | - | x | - | ELECTRIC TERMINAL |
| 795595-003 | - | - | x | - | x | - | SYNCHRONIZER (DIEHL) |

PARTS FOR MACHINE CLASS 211

(-01 = USA, -02 = EUROPE)

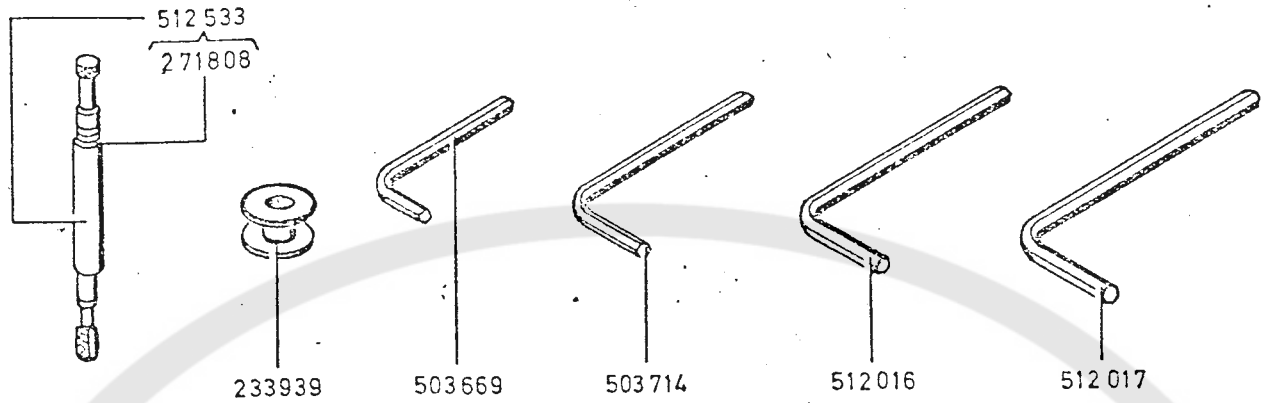
| PART NO. | G 446 | | G 451 | | G 457 | | NAME |
|------------|-------|-----|-------|-----|-------|-----|--|
| | -01 | -02 | -01 | -02 | -01 | -02 | |
| 141566-833 | - | - | x | x | x | x | MACHINE PULLEY POSITION SCREW |
| 141567-833 | - | - | x | x | x | x | MACHINE PULLEY SET SCREW |
| 200160-805 | - | - | - | x | - | x | THREAD GUIDE (TOP OF ARM) SCREW |
| 244729 | - | - | - | x | - | x | THREAD GUIDE (TOP OF ARM) |
| 272142 | - | - | x | x | x | x | ARM SHAFT BALL BEARING (BACK) (DOUBLE SHIELDED BEARING) |
| 500379-819 | - | - | - | x | - | x | MACHINE LEG (2) |
| 500380-819 | - | - | - | x | - | x | MACHINE LEG |
| 511504-830 | - | - | - | x | - | x | ELECTRIC TERMINAL SCREW |
| 511504-830 | - | - | - | x | - | x | BUSHING FEMALE SCREW |
| 511512-869 | - | - | - | x | - | x | MICRO SWITCH MOUNTING BRACKET SCREW |
| 511513-869 | - | - | - | x | - | x | MICRO SWITCH MOUNTING SCREW (2) |
| 511514-869 | - | - | - | x | - | x | MICRO SWITCH DRIVING CAM SET SCREW |
| 511521 | - | - | - | x | - | x | SYNXHRONIZER BRACKET SCREW |
| 512010 | - | - | - | x | - | x | SYNCHRONIZER BRACKET WASHER |
| 512014 | - | - | - | x | - | x | MICRO SWITCH SET SCREW SPACE |
| 512559 | - | - | - | x | - | x | MICRO SWITCH MOUNTING BRACKET |
| 512560 | - | - | - | x | - | x | MICRO SWITCH DRIVING CAM WITH 511514 |
| 512583 | - | - | x | x | - | - | MACHINE PULLEY CPL. NOS. 141566, 141567 AND 272142 |
| 512586 | - | - | - | - | x | x | MACHINE PULLEY CPL. NOS. 141566, 141567 AND 272142 |
| 512601 | - | - | - | x | - | x | SYNCHRONIZER BRACKET |
| 512604 | - | - | - | x | - | x | BUSHING FEMALE SCREW WASHER |
| 603210 | - | - | - | x | - | x | PLUG (10 PRONGS) |
| 603213 | - | - | - | x | - | x | CABLE CLAMP |
| 603216 | - | - | - | x | - | x | INSULATOR TUBING |
| 603218 | - | - | - | x | - | x | RING TERMINAL FOR GROUND WIRE |
| 603221 | - | - | - | x | - | x | MICRO SWITCH |
| 603227 | - | - | - | x | - | x | WIRE HARNES CPL. NOS. 603210, 603218, 603257 AND 603260 |
| 603231 | - | - | - | x | - | x | CABLE CLAMP (CLOSED) |
| 603233 | - | - | - | x | - | x | CABLE CLAMP |
| 603239 | - | - | - | x | - | x | SYNCHRONIZER "B" |
| 603257 | - | - | - | x | - | x | BUSHING FEMALE (TWO POLE) |
| 603260 | - | - | - | x | - | x | CABLE LEAD IN HOSE |
| 603267 | - | - | - | x | - | x | ELECTRIC TERMINAL |

PARTS FOR MACHINE CLASS 211

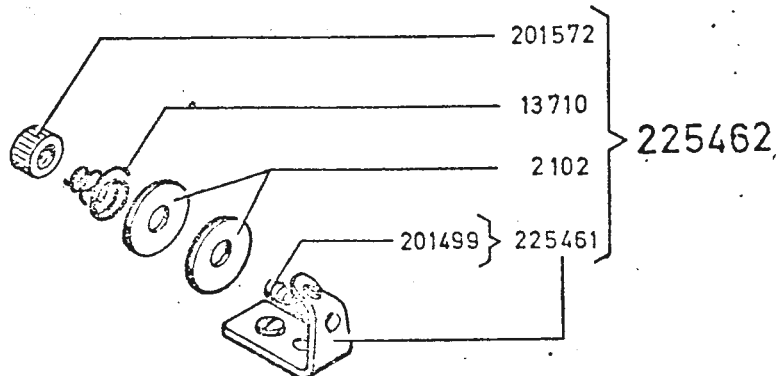
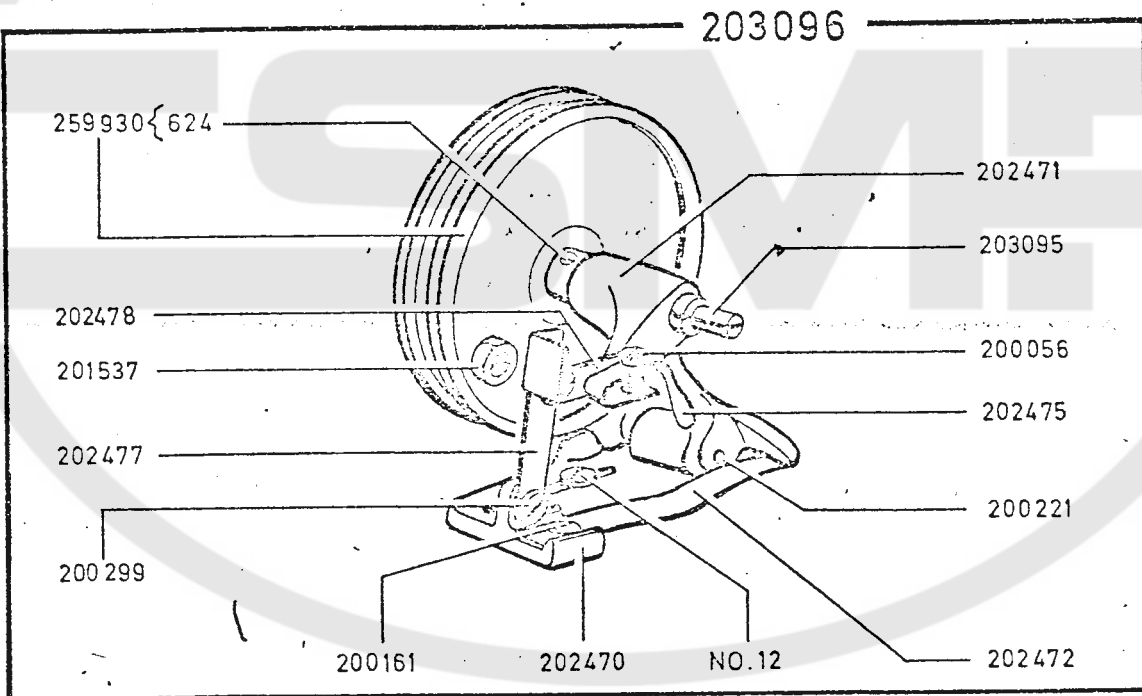
(-01 = USA; -02 = EUROPE)

| PART NO. | G 446 | | G 451 | | G 457 | | NAME |
|------------|-------|-----|-------|-----|-------|-----|---|
| | -01 | -02 | -01 | -02 | -01 | -02 | |
| NO. 12 | x | - | x | - | x | - | BOBBIN WINDER WOOD SCREW 3/4 INCH (2) |
| 000624-833 | x | - | x | - | x | - | BOBBIN WINDER PULLEY SET SCREW |
| 002102 | x | - | x | - | x | - | THREAD GUIDE TENSION DISC |
| 013710 | x | - | x | - | x | - | THREAD GUIDE TENSION SPRING |
| 200056-805 | x | - | x | - | x | - | BOBBIN WINDER STOP LATCH SCREW |
| 200161-804 | x | - | x | - | x | - | BOBBIN WINDER FRAME SPRING CLAMP SCREW |
| 200221-804 | x | - | x | - | x | - | BOBBIN WINDER FRAME HINGE SCREW |
| 200299-819 | x | - | x | - | x | - | BOBBIN WINDER STOP LATCH THUMB LEVER JOINT AND HINGE SCREW (3) |
| 201499-819 | x | - | x | - | x | - | THREAD GUIDE TENSION STUD |
| 201537-819 | x | - | x | - | x | - | BOBBIN WINDER STOP LATCH THUMB LEVER HINGE SCREW NUT |
| 201572-819 | x | - | x | - | x | - | THREAD GUIDE TENSION STUD THUMB NUT |
| 202470 | x | - | x | - | x | - | BOBBIN WINDER BASE |
| 202471 | x | - | x | - | x | - | BOBBIN WINDER FRAME |
| 202472 | x | - | x | - | x | - | BOBBIN WINDER FRAME SPRING |
| 202475 | x | - | x | - | x | - | BOBBIN WINDER STOP LATCH |
| 202477 | x | - | x | - | x | - | BOBBIN WINDER STOP LATCH THUMB LEVER |
| 202478 | x | - | x | - | x | - | BOBBIN WINDER STOP LATCH TRIL LEVER |
| 203095 | x | - | x | - | x | - | BOBBIN WINDER SPINDLE |
| 203096 | x | - | x | - | x | - | BOBBIN WINDER CPL. NOS. 200056, 200161, 200221, 201537, 202470, 202471, 202472, 202475, 202477, 202478, 203095, 259930, TWO WOOD SCREWS 3/4 INCH AND THREE 200299 |
| 225461 | x | - | x | - | x | - | THREAD GUIDE TENSION BRACKET WITH 201499 |
| 225462 | x | - | x | - | x | - | THREAD GUIDE TENSION BRACKET CPL. NOS. 13710, 201572, 225461 AND TWO 2102 |
| 233939 | x | x | x | x | x | x | BOBBIN (2) |
| 259930 | x | - | x | - | x | - | BOBBIN WINDER PULLEY WITH 624 |
| 271808 | x | x | x | x | x | x | HOOK SADDLE OIL GAUGE SEAL |
| 503669 | x | x | x | x | x | x | WRENCH 2 mm HEXAGON |
| 503714 | x | x | x | x | x | x | WRENCH 2,5 mm HEXAGON |
| 512016 | x | x | x | x | x | x | WRENCH 3 mm HEXAGON |
| 512017 | x | x | x | x | x | x | WRENCH 4 mm HEXAGON |
| 512533 | x | x | x | x | x | x | HOOK SADDLE OIL GAUGE WITH 271808 |

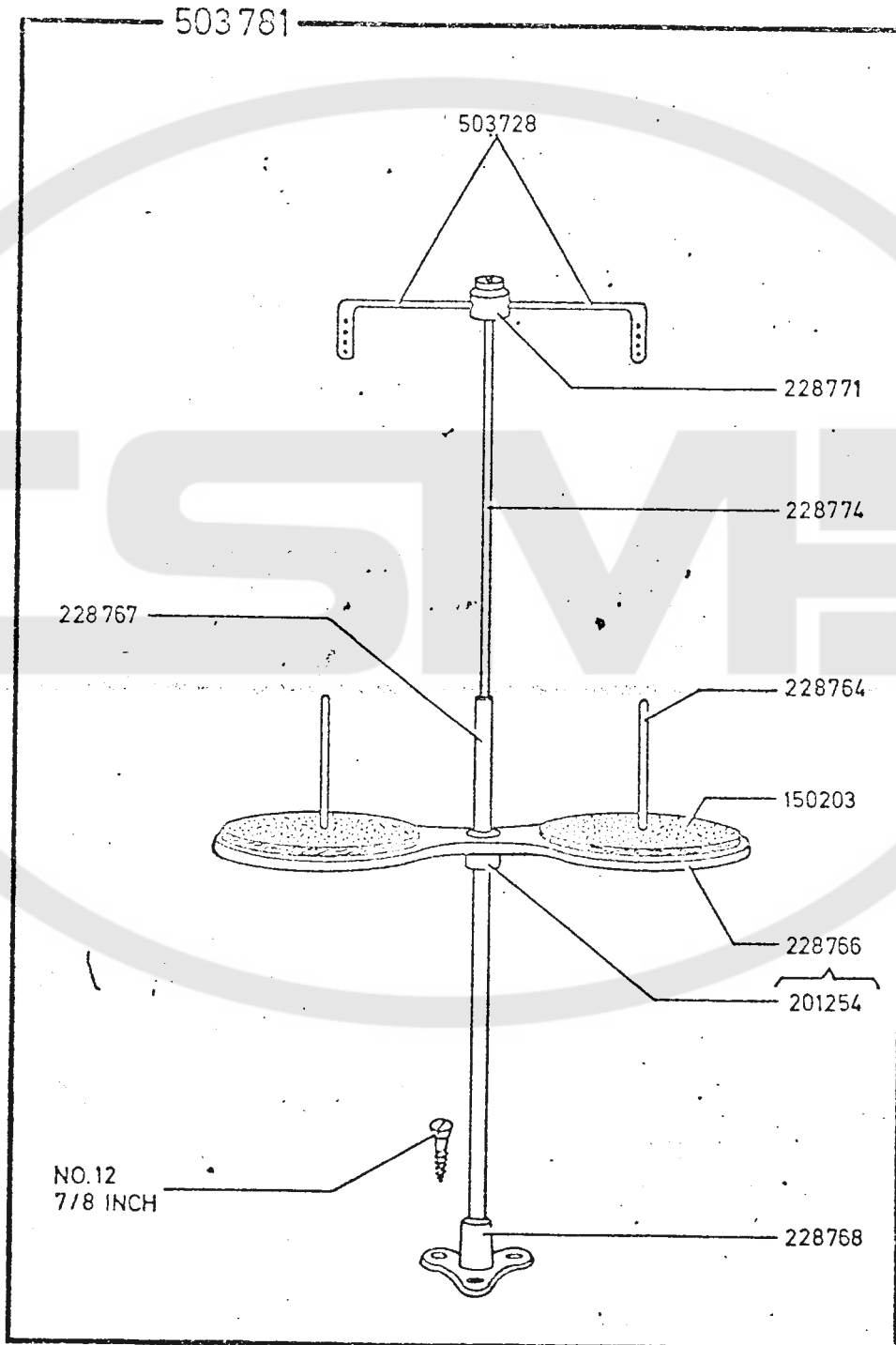
ACCESSORIES FOR 211 G 446-01, 211 G 446-02
211 G 451-01, 211 G 451-02
211 G 457-01, 211 G 457-02



ACCESSORIES FOR 211G 446-01, 211G 451-01 AND
211G 457-01



ACCESSORIES FOR 211 G 446-01, 211 G 446-02
211 G 451-01, 211 G 451-02
211 G 457-01, 211 G 457-02



PARTS FOR MACHINE CLASS 211

(-01 = USA, -02 = EUROPE)

| PART NO. | G 446 | | G 451 | | G 457 | | NAME |
|------------|-------|-----|-------|-----|-------|-----|--|
| | -01 | -02 | -01 | -02 | -01 | -02 | |
| 200026-850 | x | x | x | x | x | x | LOWER MOUNTING BRACKET SCREW (3) |
| 200061-833 | x | x | x | x | x | x | HOOK SADDLE OIL RESERVOIR SCREW (2) |
| 200089-819 | x | x | x | x | x | x | HOOK BALL BEARING SCREW (2) |
| 200135-805 | x | x | x | x | x | x | BOBBIN CASE OPENER LINK CAP SCREW (2) |
| 200185-804 | x | x | x | x | x | x | HOOK SADDLE OIL STOP SCREW |
| 200374-830 | x | x | x | x | x | x | BOBBINCASE OPENER CRANK HINGE STUD SET SCREW |
| 200378-803 | x | x | x | x | x | x | HOOK SADDLE OIL REGULATING SCREW CHECK SCREW |
| 200388-803 | x | x | x | x | x | x | BOBBIN CASE OPENER CRANK HINGE STUD SET SCREW CHECK SCREW |
| 244084 | x | x | x | x | x | x | FEED DRIVING ROCK SHAFT BUSHING PINCH SCREW SET SCREW PACKING |
| 244704 | x | x | x | x | x | x | BOBBIN CASE OPENER CAM SHAFT |
| 267053 | x | x | x | x | x | x | HOOK BALL BEARING |
| 267166 | x | x | x | x | x | x | BOBBIN CASE OPENER CRANK |
| 267167 | x | x | x | x | x | x | BOBBIN CASE OPENER CRANK HINGE STUD |
| 267172 | x | x | x | x | x | x | BOBBIN CASE OPENER LINK |
| 267194 | x | x | x | x | x | x | HOOK SADDLE WITH 200185, 267367, 267370 AND 267371 |
| 267198 | x | x | x | x | x | x | HOOK SADDLE OIL GAUGE SLEEVE WITH 267277 |
| 267200 | x | x | x | x | x | x | HOOK SADDLE OIL RESERVOIR |
| 267212 | x | x | x | x | x | x | HOOK SADDLE OIL RESERVOIR GASKET |
| 267215 | x | x | x | x | x | x | HOOK SHAFT WITH 270880 AND 276061 |
| 267248 | x | x | x | x | x | x | HOOK DRIVING PINION THRUST BEARING |
| 267277 | x | x | x | x | x | x | HOOK SADDLE OIL STRAINER |
| 267365 | x | x | x | x | x | x | BOBBIN CASE OPENER DRIVING CAM SHAFT GEAR (SPIRAL) WITH TWO 350595 |
| 267366 | x | x | x | x | x | x | HOOK DRIVING PINION (SPIRAL) WITH TWO 350595 |
| 267367 | x | x | x | x | x | x | HOOK SHAFT BUSHING |
| 267370 | x | x | x | x | x | x | BOBBIN CASE OPENER DRIVING CAM SHAFT BUSHING (LOWER) |
| 267371 | x | x | x | x | x | x | BOBBIN CASE OPENER DRIVING CAM SHAFT BUSHING (UPPER) |
| 270880 | x | x | x | x | x | x | HOOK SHAFT OIL WICK |
| 276061 | x | x | x | x | x | x | HOOK SHAFT OIL WICK HOLDER |
| 350595-850 | x | x | x | x | x | x | HOOK SADDLE OIL REGULATING SCREW |
| 350595-850 | x | x | x | x | x | x | BOBBIN CASE OPENER DRIVING CAM SHAFT GEAR (SPIRAL) SET SCREW (2) |
| 350595-850 | x | x | x | x | x | x | HOOK DRIVING PINION (SPIRAL) SET SCREW (2) |
| 511502 | x | x | x | x | x | x | THREAD CUTTING KNIFE DRIVING SHAFT BRACKET SCREW (2) |

PARTS FOR MACHINE CLASS 211

(-01 = USA, -02 = EUROPE)

| PART NO. | G446 | | G451 | | G457 | | NAME |
|------------|------|-----|------|-----|------|-----|---|
| | -01 | -02 | -01 | -02 | -01 | -02 | |
| 511507-869 | x | x | x | x | x | x | THREAD PULLER CAM SCREW |
| 511508-869 | x | x | x | x | x | x | THREAD PULLER RETAINING PLATE SCREW (2) |
| 511510-869 | x | x | x | x | x | x | THREAD CUTTING KNIFE DRIVING SHAFT TORSION SPRING COLLAR SCREW |
| 512010 | x | x | x | x | x | x | THREAD CUTTING KNIFE DRIVING CRANK WASHER |
| 512523 | x | x | x | x | x | x | THREAD PULLER BASE |
| 512525 | x | x | x | x | x | x | THREAD PULLER CAM WITH 511507 |
| 512526 | x | x | x | x | x | x | THREAD PULLER BRACKET |
| 512528 | x | x | x | x | x | x | THREAD PULLER RETAINING PLATE |
| 512553 | x | x | x | x | x | x | THREAD CUTTING KNIFE DRIVING SHAFT STOP CRANK WITH 511505 |
| 512568 | x | x | x | x | x | x | LOWER MOUNTING BRACKET |
| 512569 | x | x | x | x | x | x | THREAD CUTTING KNIFE DRIVING SHAFT BRACKET |
| 512570 | x | x | x | x | x | x | THREAD CUTTING KNIFE DRIVING SHAFT |
| 512574 | x | x | x | x | x | x | THREAD CUTTING KNIFE DRIVING SHAFT TORSION SPRING |
| 512603 | x | x | x | x | x | x | HOOK SADDLE CPL. NOS. 200374, 200378, 200388, 244084, 244704, 267053, 267166, 267167, 267172, 267194, 267198, 267200, 267212, 267215, 267248, 267365, 267366, 350564, 511506, 511508, 512010, 512523, 512525, 512526, 512528, 512553, 512568, 512569, 512570, 512574, 512605, 514010 AND TWO EACH 200061, 200089, 200135, 511502, 512008, 511510 AND THREE, 200026 |
| 512605 | x | x | x | x | x | x | THREAD CUTTING KNIFE DRIVING SHAFT STOP WITH 511505 |
| 514010 | x | x | x | x | x | x | THREAD CUTTING KNIFE DRIVING SHAFT TORSION SPRING COLLAR WITH TWO 511510 |