



High-speed, 2-Needle / 4-Needle, Needle-feed,  
Double Chainstitch Cylinder-bed Machine  
高速2本針 / 4本針針送り二重環縫シリンダーベッドマシン

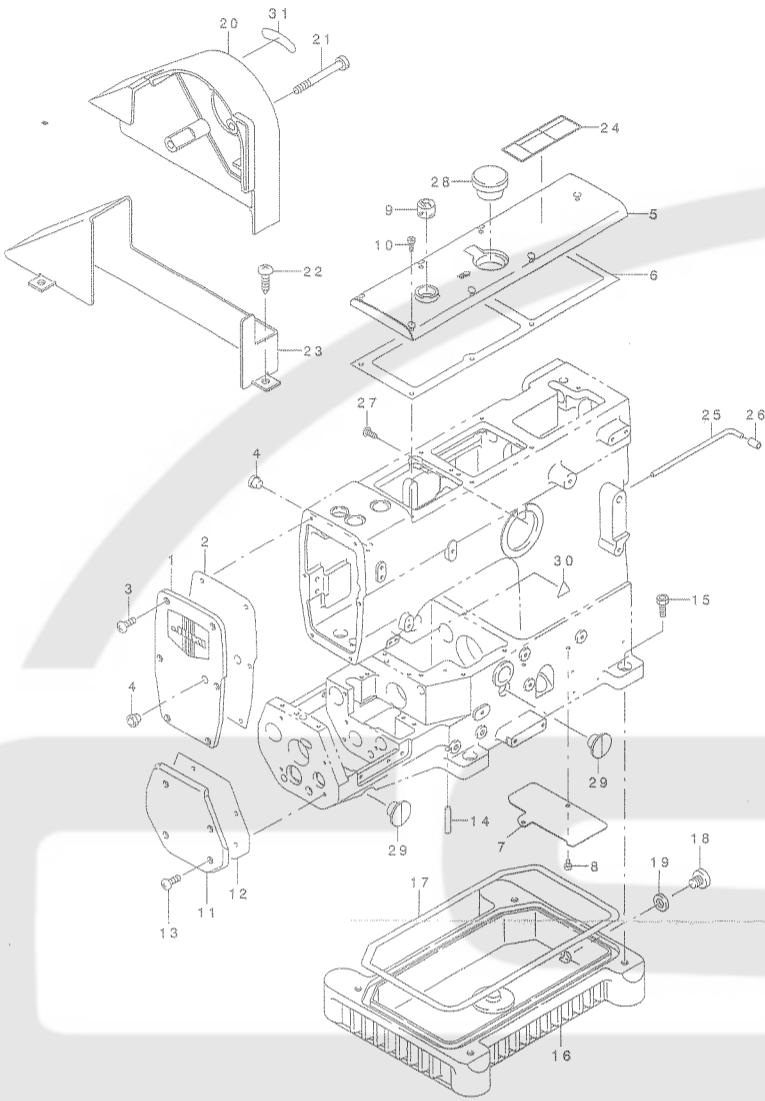
# MH-1410

## PARTS LIST

29348109  
No.1303-01

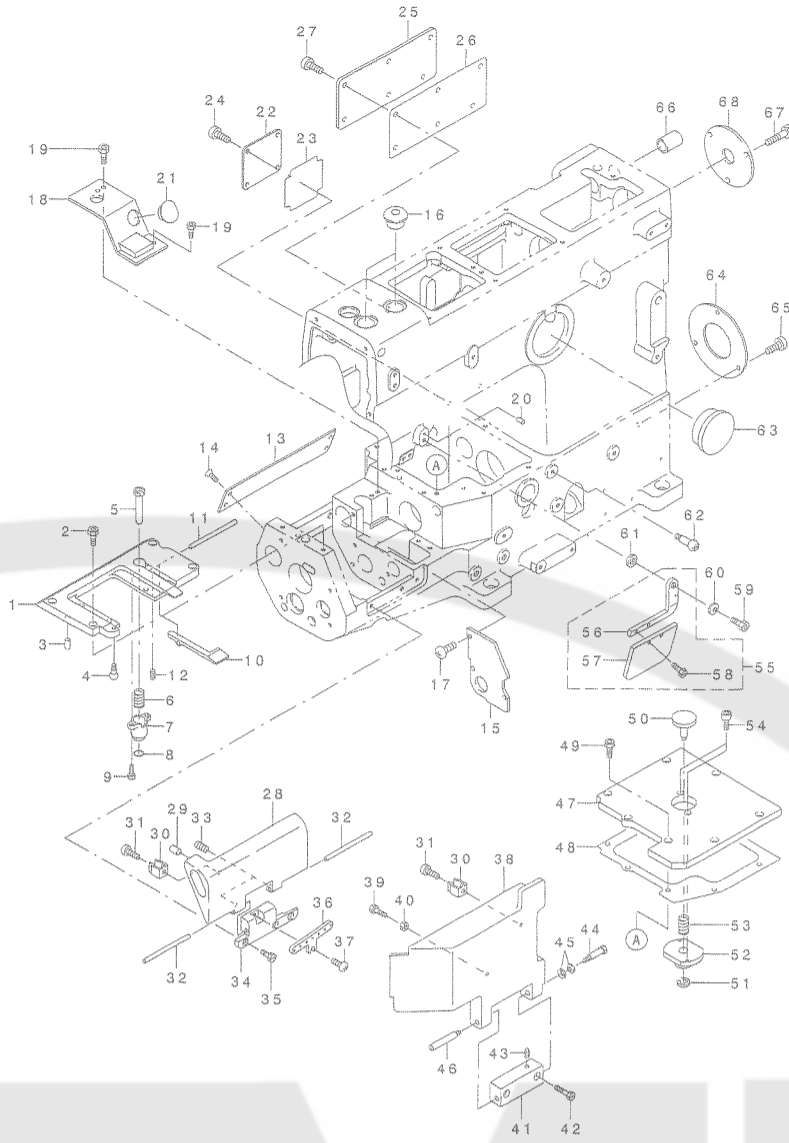
### 1. FRAME & MISCELLANEOUS COVER COMPONENTS (1)

頭部・外装関係 (1)



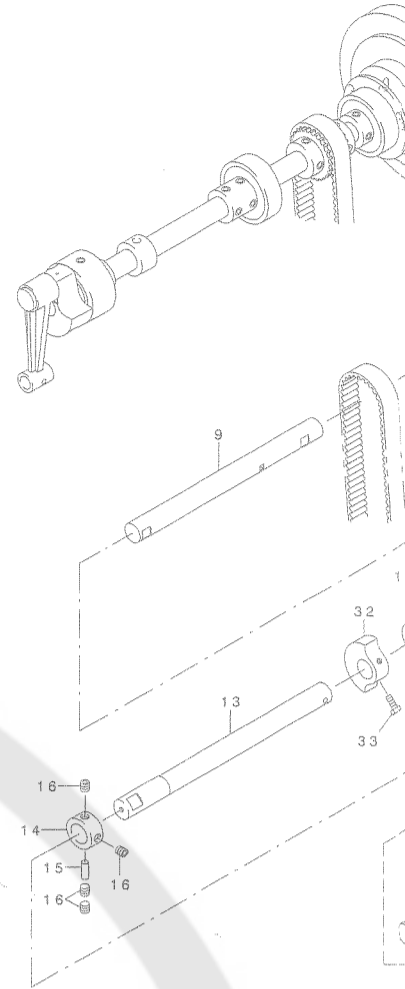
### 2. FRAME & MISCELLANEOUS COVER COMPONENTS (2)

頭部・外装関係 (2)



### 3. UPPER SHAFT COMPONENTS

上軸関係



REF.NO	NOTE	PART NO.	DESCRIPTION	Qty
1		311-00506	FACE PLATE	1
2		311-00605	FACE PLATE PACKING	1
3		311-68107	SCREW (M4X0.7-10) 45	6
4		311-78205	RUBBER CAP	2
5		311-01405	TOP COVER	1
6		311-02700	TOP COVER PACKING	1
7		311-01900	DUST PROOF PLATE	1
8		311-68503	SCREW (M4X0.7-5) 45	2
9		311-04706	OIL SIGHT WINDOW	1
10		311-68008	SCREW (M4X0.7-12) 45	7
11		311-01207	CYLINDER COVER (LEFT)	1
12		311-01603	CYLINDER COVER PACKING	1
13		311-68107	SCREW (M4X0.7-10) 45	4
14		311-04607	KNOCK PIN	4
15		311-64007	SCREW (M8X1.25-20) 62	4
16		311-04102	OIL RESERVOIR	1
17		311-04201	OIL RESERVOIR PACKING	1
18		311-61805	SCREW (3/8X24-8) 70	1
19		311-81506	PACKING	1
20		311-05950	BELT COVER ASM.	1
21		311-65509	SCREW (M6X1-63) 60	2
22		GAK-A2222000	WOOD SCREW (5.1X20)	3
23		311-06107	BELT COVER (LOWER)	1
24		CM-3002001-B1	SAFETY LABEL 12	1
25	#01	311-40205	POSITIONER PIN	1
26	#01	311-40304	POSITIONER PIN CUSHION	1
27		311-68107	SCREW (M4X0.7-10) 45	1
28		311-78106	RUBBER CAP	1
29		311-05703	SCREW (M14X2-6) 60	2
30		CM-3002000-01	ATTENTION SEAL 16	1
31		311-06008	ROTATION DIRECTION SEAL	1

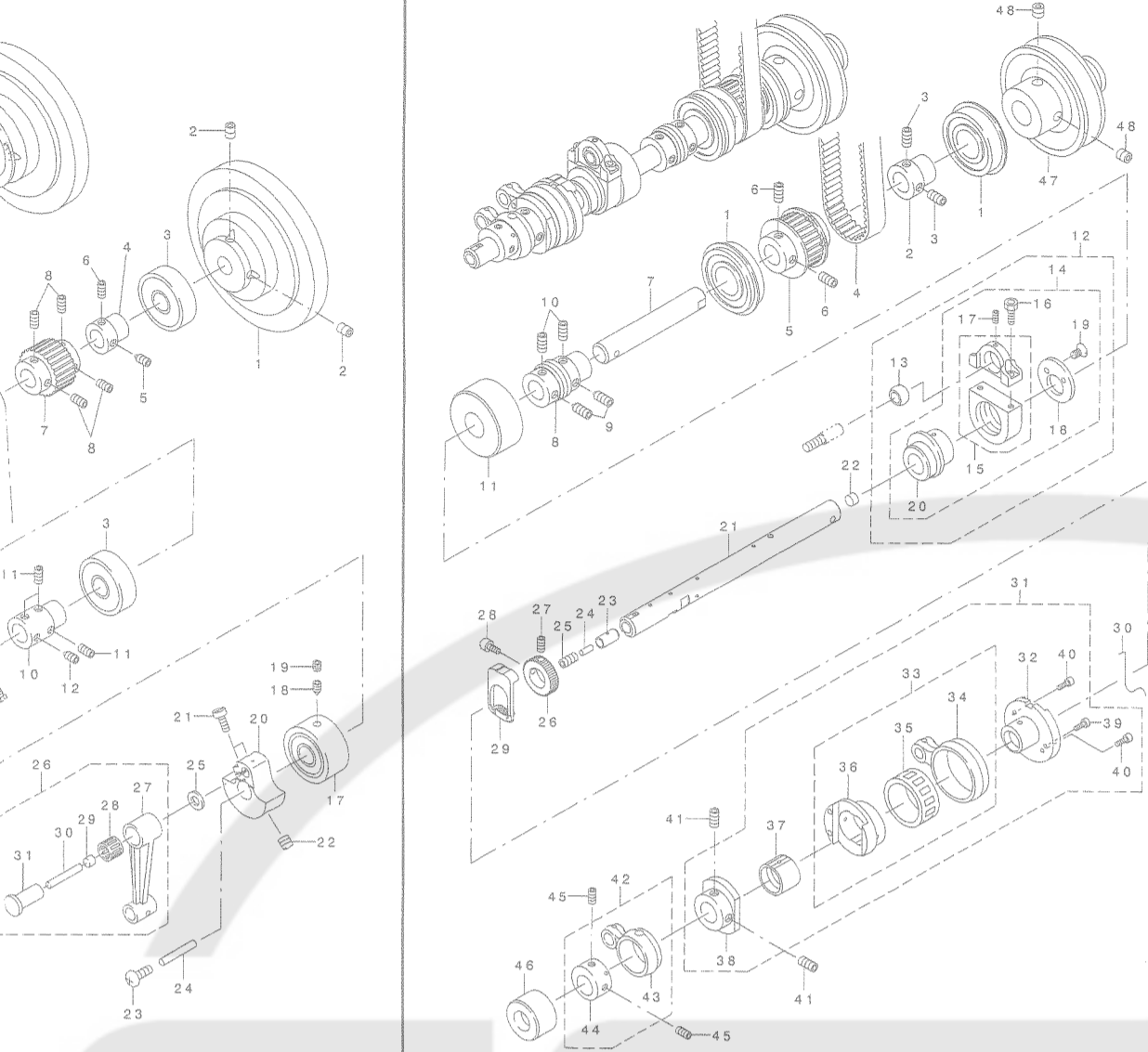
Note #01...FOR SC-380

REF.NO	NOTE	PART NO.	DESCRIPTION	Qty
1		311-01504	THROAT PLATE FITTING BASE	1
2		311-60906	SCREW (M4X0.7-10) 60	4
3		311-03906	KNOCK PIN	2
4		311-04508	SPRING HOLDER	1
5		311-26800	LOOPER POP-UP BUTTON	1
6		311-03807	LOOPER POP-UP GUIDE SPRING	1
7		311-26501	LOOPER POP-UP GUIDE	1
8		311-81209	O-RING	1
9		311-64304	SCREW (M3X0.5-6.5) 62	2
10		311-26808	BUTTON LEVER	2
11		311-77009	PARALLEL PIN (φ 4X25)	1
12		311-69501	SCREW (M3X0.5-3) 82	1
13		311-01306	CYLINDER COVER (REAR)	1
14		311-69006	SCREW (M3X0.5-6) 10	4
15		311-02403	LOOPER ECCENTRIC COVER (LEFT)	1
16		311-78304	RUBBER CAP	2
17		311-68404	SCREW (M4X0.7-8) 45	3
18		311-02502	LOOPER ECCENTRIC COVER (UPPER)	1
19		311-62704	SCREW (M4X0.7-6) 62	3
20		311-76902	SPRING PIN	1
21		311-02601	RUBBER CAP	1
22		311-02205	ADJUSTING SLIDE COVER	1
23		311-02304	ADJUSTING SLIDE COVER PACKING	1
24		311-68404	SCREW (M4X0.7-8) 45	4
25		311-04003	SLIDE PLATE	1
26		311-05307	SLIDE PLATE PACKING	1
27		311-68404	SCREW (M4X0.7-8) 45	6
28		311-01108	CYLINDER COVER	1
29		311-77900	PLUG	1
30		311-04409	COVER OPN AND SHUT SPRING	2
31		311-68503	SCREW (M4X0.7-5) 45	2
32		311-77009	PARALLEL PIN	2
33		311-69501	SCREW (M3X0.5-3) 82	2
34		311-01009	CYLINDER COVER HINGE	1
35		311-60807	SCREW (M4X0.7-8) 60	3
36		311-26105	LOOPER THREAD WAY (LEFT)	1
37		311-62001	SCREW (M4X0.7-6) 60	1
38		311-00803	LOOPER BALANCE COVER	1
39		311-64403	SCREW (M4X0.7-16) 62	1
40		311-71309	NUT M4	1
41		311-00902	LOOPER BALANCE COVER HINGE	1
42		311-68206	SCREW (M4X0.7-15) 45	2
43		311-69600	SCREW (M4X0.7-4) 82	1
44		311-03708	SCREW (M4X0.7-8) 60	1
45		311-74105	SPRING WASHER	2
46		311-66200	HIGE PIN SCREW	1
47		311-00704	BED TOP COVER	1
48		311-01702	BED TOP COVER PACKING	1
49		311-64106	SCREW (M4X0.7-10) 62	7
50		311-02908	FEED ADJUSTING BUTTON	1
51		311-75508	E-RING	1
52		311-03005	BUTTON GUIDE	1
53		311-03807	LOOPER POP-UP GUIDE SPRING	1
54		311-64304	SCREW (M3X0.5-8) 62	2
55		311-02056	EYE GUARD COVER ASM.	1
56		311-02007	EYE GUARD FITTING PLATE	(1)
57		311-02106	EYE GUARD COVER	(1)
58		311-61003	SCREW (M2.5X0.45-4.5) 70	(2)
59		311-66507	STEP-SCREW (M4X0.7-5) 60	1
60		311-74204	SPRING WASHER	1
61		311-73909	WASHER	1
62		311-04300	BALANCE COVER SPRING HOLDER	1
63		311-00209	RUBBER CAP	1
64		311-06206	BEARING COVER	1
65		311-68404	SCREW (M4X0.7-8) 45	3
66		311-78007	RUBBER CAP	1
67		311-68404	SCREW (M4X0.7-8) 45	3
68		311-02809	BEARING COVER (UPPER)	1

REF.NO	NOTE	PART NO.	DESCRIPTION
1		311-10901	FLY WHE
2		311-70905	SCREW
3		311-09101	BOLL BE
4		311-09408	BEARING
5		311-69907	SCREW
6		311-70301	SCREW
7		311-09705	TIMING
8		311-70301	SCREW
9		311-11206	UPPER S
10		311-09507	UPPER S
11		311-70301	SCREW
12		311-69907	SCREW
13		311-08806	UPPER S
14		311-08905	UPPER S
15		311-80508	OIL WIC
16		311-70202	SCREW
17		311-09952	UPPER S
18		311-70608	SCREW
19		311-70202	SCREW
20		311-11503	COUNTER
21		311-61300	SCREW
22		311-69709	SCREW
23		311-67802	SCREW
24		311-10703	OIL WIC
25		311-10604	NEEDLE
26		311-11354	NEEDLE
27		311-10109	NEEDLE
28		311-10307	NEEDLE
29		311-10505	PLUG
30		311-10406	FELT
31		311-11404	NEEDLE
32		311-10802	BALANCE
33		311-61409	SCREW

#### 4. LOWER SHAFT COMPONENTS

下軸関係

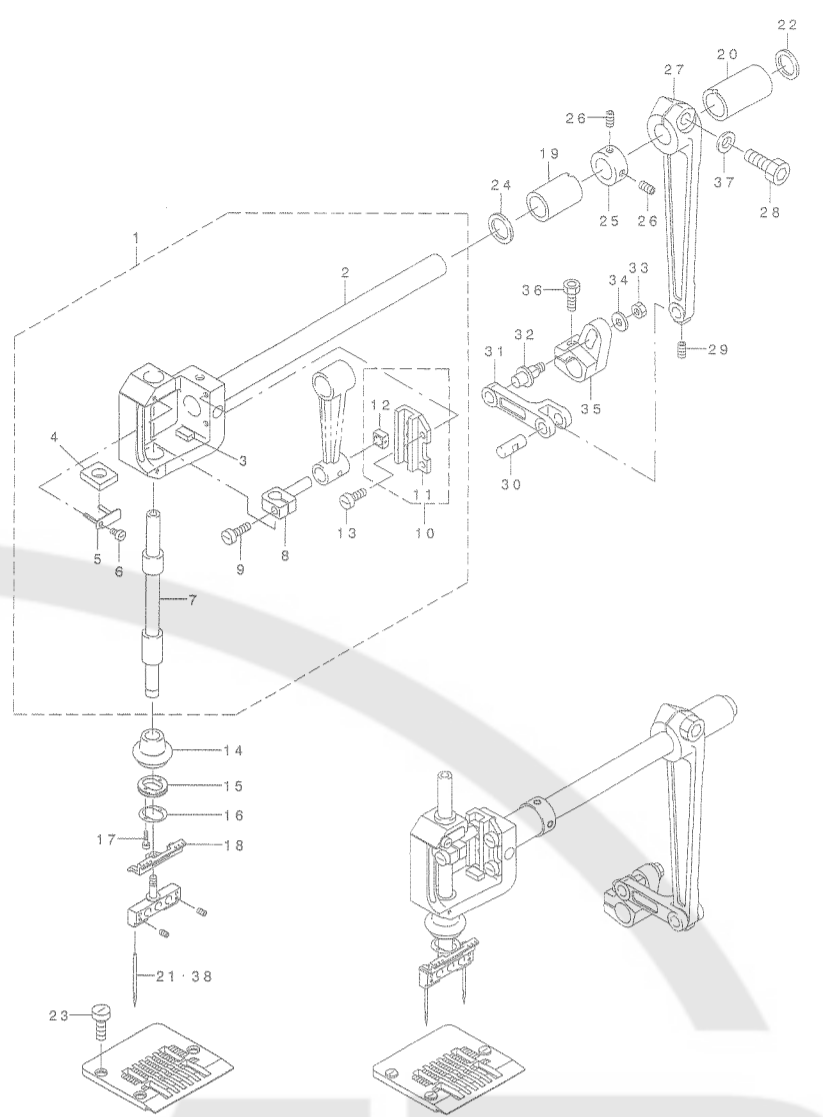


DESCRIPTION	Qty
WHEEL	1
(M6X1-8) 82	2
BEARING	2
BEARING HOLDER ASM.	1
(M6X1-8) T82	1
(M6X1-6) 82	1
PULLEY (UPPER)	1
(M6X1-6) 82	4
SHAFT (RIGHT)	1
SHAFT JOINT	1
(M6X1-6) 82	3
(M6X1-8) T82	1
SHAFT (LEFT)	1
SHAFT (LEFT) COLLAR	1
WASHER	1
(M6X1-4.8) 82	4
SHAFT SLEEVE ASM.	1
(M6X1-6) T82	1
(M6X1-4.8) 82	1
SPREADER WEIGHT	1
(M5X0.8-10) 60	2
(M8X1.25-8) 82	2
(M5X0.8-5) 41	1
WASHER	1
ROD RING	1
ROD ASM.	1
ROD	(1)
BEARING	(1)
ROD PIN	(1)
SPREADER WEIGHT	1
(M4X0.7-8) 60	2

REF.NO	NOTE	PART NO.	DESCRIPTION	Qty
1		311-09002	FLANGE BEARING	2
2		311-09408	BEARING HOLDER (SHORT)	1
3		311-70301	SCREW (M6X1-6) 82	2
4		311-08004	TIMING BELT	1
5		311-09804	TIMING PULLEY (LOWER)	1
6		311-70301	SCREW (M6X1-6) 82	4
7		311-11107	LOWER SHAFT (RIGHT)	1
8		311-09606	OIL PUMP DRIVING WORM	1
9		311-69907	SCREW (M6X1-8) T82	2
10		311-70301	SCREW (M6X1-6) 82	2
11		311-08509	LOWER SHAFT BUSHING (RIGHT)	1
12		311-28069	SPREADER LOT ASM. 2	1
13		311-28309	PLAIN BEARING	(1)
14		311-28051	SPREADER LOT ASM. 1	(1)
15		311-28002	SPREADER LOT	(1)
16		311-64106	SCREW (M4X0.7-10) 62	(2)
17		311-69501	SCREW (M3X0.5-3) 82	(1)
18		311-28200	SPREADER LOT COVER	(1)
19		311-69105	SCREW (M4X0.7-7.3) 10	(2)
20		311-28101	SPREADER ECCENTRIC	(1)
21		311-08202	LOWER SHAFT (LEFT)	1
22		311-21205	PLUG	1
23		311-08608	OIL PRESSURE REGULATING VALVE	1
24		311-80706	FELT	1
25		311-70202	SCREW (M6X1-4.8) 82	1
26		311-24209	FEED DOG REGULATING GEAR	1
27		311-70004	SCREW (M5X0.8-5) 82	1
28		311-60104	SCREW (M5X0.8-8) 60	1
29		311-22104	FEED DOG REGULATING PLATE	1
30		311-23706	REGULATING PLATE SPRING	1
31		311-22260	FEED DOG REGULATOR ASM.	1
32		311-22500	FEED DOG REGULATING ECCENTRIC	(1)
33		311-22252	FEED DRIVE ECCENTRIC ASM.	(1)
34		311-22203	FEED DRIVE ROD	(1)
35		311-22401	NEEDLE BEARING	(1)
36		311-22302	FEED DRIVE ECCENTRIC	(1)
37		311-22609	ECCENTRIC LINK	(1)
38		311-22708	FEED DOG REGULATOR	(1)
39		311-60500	SCREW (M3X0.5-6.3) 60	(1)
40		311-60005	SCREW (M3X0.5-4) 60	(2)
41		311-70301	SCREW (M6X1-6) 82	2
42		311-24357	FEED LIFT ROD ASM.	1
43		311-24308	FEED LIFT ROD	(1)
44		311-24407	FEED LIFT ROD ECCENTRIC	(1)
45		311-70004	SCREW (M5X0.8-5) 82	2
46		311-08400	LOWER SHAFT BUSHING (LEFT)	1
47		311-11008	PULLEY	1
48		311-70301	SCREW (M6X1-6) 82	2

#### 5. NEEDLE ROD COMPONENTS

針棒関係

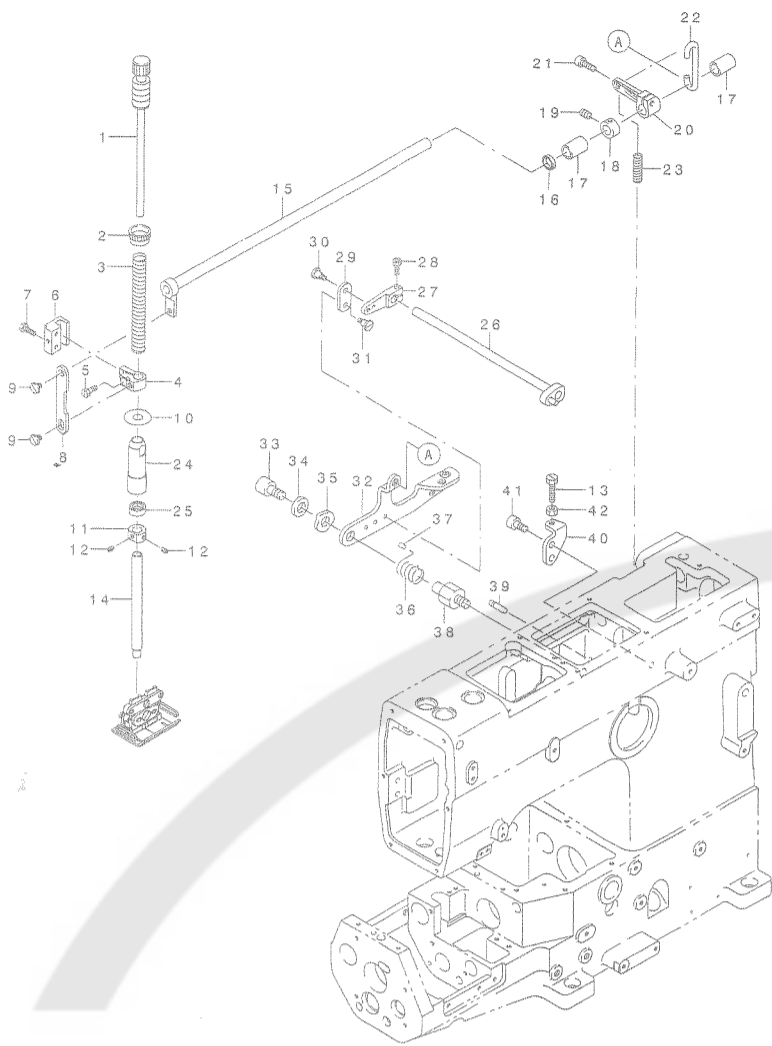


REF.NO	NOTE	PART NO.	DESCRIPTION	Qty
1		311-14069	NEEDLE BAR YOKE ASM. 3	1
2		311-14051	NEEDLE BAR YOKE ASM. 1	(1)
3		311-15207	SPONGE	(1)
4		311-14903	FELT	(1)
5		311-15009	FELT CLAMP	(1)
6		311-61102	SCREW (M3X0.5-2.6) 60	(1)
7		311-14358	NEEDLE BAR BUSHING ASM.	(1)
8		311-14804	NEEDLE BAR BRACKET	(1)
9		311-64700	SCREW (M5X0.8-18) 60	(1)
10		311-14655	NEEDLE BAR GUIDE ASM.	(1)
11		311-14606	NEEDLE BAR GUIDE	(1)
12		311-14705	NEEDLE GUIDE BLOCK	(1)
13		311-60609	SCREW (M4X0.7-10) 60	(2)
14		311-12808	OIL SHIELD COVER	1
15		311-12907	OIL SHIELD COVER SUPPORT	1
16		311-13004	SPACER	1
17		311-64502	SCREW (M2X0.4-8)	2
18		311-12709	NEEDLE CLAMP THREAD WAY	1
19		311-13301	BUSHING	1
20		311-13806	BUSHING (RIGHT)	1
21	#01	MDV-570B2100	NEEDLE DVX57 #21	2
22		311-13905	OIL SEAL	1
23		311-62308	SCREW (M5X0.8-7) 60	3
24		311-13103	THRUST WASHER	1
25		311-13202	COLLAR	1
26		311-70004	SCREW (M5X0.8-5) 82	2
27		311-13400	DRIVING LEVER (UPPER)	1
28		311-63405	SCREW (M8X1.25-20) 62	1
29		311-69501	SCREW (M4X0.7-4) 82	1
30		311-15108	LINK PIN	1
31		311-13608	NEEDLE ROCKER LINK	1
32		311-13707	NEEDLE ROCKER LEVER PIN	1
33		311-71200	NUT	1
34		311-73701	WASHER	1
35		311-13509	NEEDLE ROCKER LEVER	1
36		311-63900	SCREW (M6X1-15) 62	1
37		311-73008	WASHER	1
38	#02	MDV-570B2100	NEEDLE DVX57 #21	4

Note #01...FOR 2-NEEDLE  
#02...FOR 4-NEEDLE

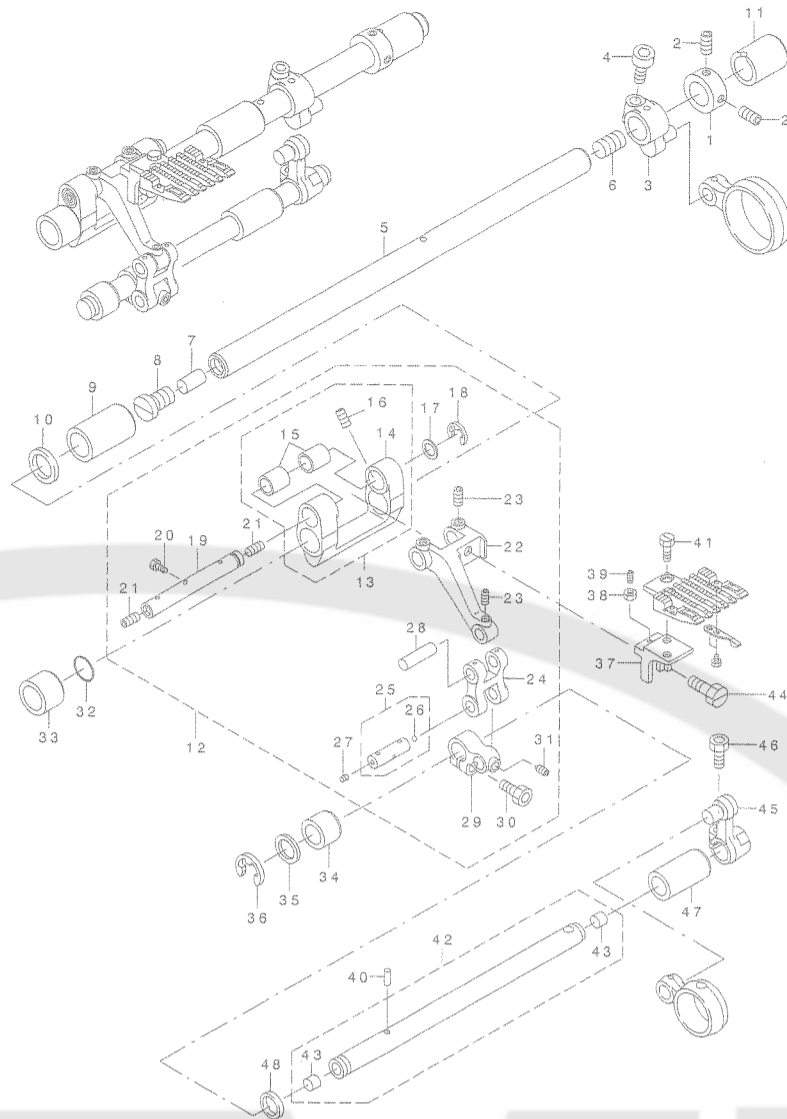
6. PRESSER FOOT COMPONENTS

押え関係



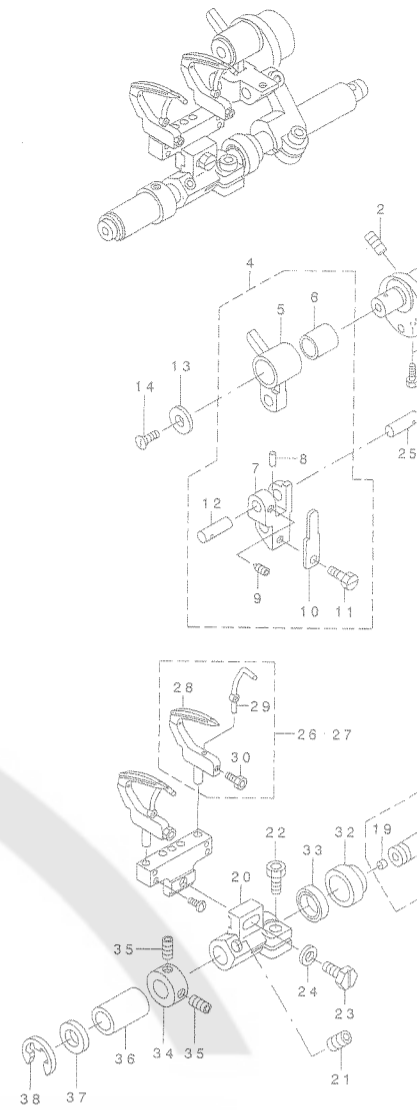
7. FEED MECHANISM COMPONENTS

送り関係



8. LOOPER COMPONENTS

ルーバ関係



REF.NO	NOTE	PART NO.	DESCRIPTION	Qty
1		311-18458	PRESSER SPRING REGULATOR ASM.	1
2		311-18607	LOCK NUT	1
3		311-17401	PRESSER BAR SPRING (OUTER)	1
4		311-17104	PRESSER BAR HOLDER	1
5		311-60906	SCREW (M4X0.7-10) 60	1
6		311-18300	PRESSER BAR GUIDE	1
7		311-67703	SCREW (M4X0.7-10) 40	2
8		311-17302	LINK	1
9		311-66309	SCREW (M5X0.8X φ 6.35) D60	2
10		311-18201	OIL PROTECTOR RING	1
11		311-17807	LOOPER DRIVE SHAFT COLLAR	1
12		311-69600	SCREW (M4X0.7-4) 82	2
13		311-64700	SCREW (M5X0.8-18) 60	1
14		311-17203	PRESSRE BAR	1
15		311-19050	LIFTER SHAFT ASM.	1
16		311-79104	OIL SEAL	1
17		311-19506	LIFTER SHAFT BUSHING	2
18		311-17906	LEVER SHAFT COLLAR	1
19		311-69600	SCREW (M4X0.7-4) 82	2
20		311-19407	LIFTER SHAFT LEVER	1
21		311-62803	SCREW (M5X0.8-14) 62	1
22		311-19308	LIFTER SHAFT LEVER LINK	1
23		311-17609	UPPER KNIFE HOLDER SPRING	1
24		311-17005	PRESSER BAR BUSHING	1
25		311-79500	LOOPER SHAFT OIL SEAL	1
26		311-31352	THREAD RELEASE SHAFT ASM.	1
27		311-32004	THREAD RELEASE LEVER	1
28		311-65004	SCREW (M4X0.7-14) 62	1
29		311-18805	CONNECTION PLATE	1
30		311-66705	SCREW (M4X0.7-4) D60	1
31		311-66408	SCREW (M4X0.7-5) D60	1
32		311-19605	PRESSER LIFTER LEVER	1
33		311-63702	SCREW (M6X1-10) 62	1
34		311-73800	WASHER	1
35		311-74303	WAVE WASHER	1
36		311-17708	PRESSER LIFTER LEVER SPRING	1
37		311-18904	CAP	1
38		311-18003	FITTING BASE	1
39		311-18102	SPRING HANGING PIN	1
40		311-19209	PRESSER LIFTER STOPPER	1
41		311-63504	SCREW (M6X1-12) 62	2
42		311-71705	NUT	1

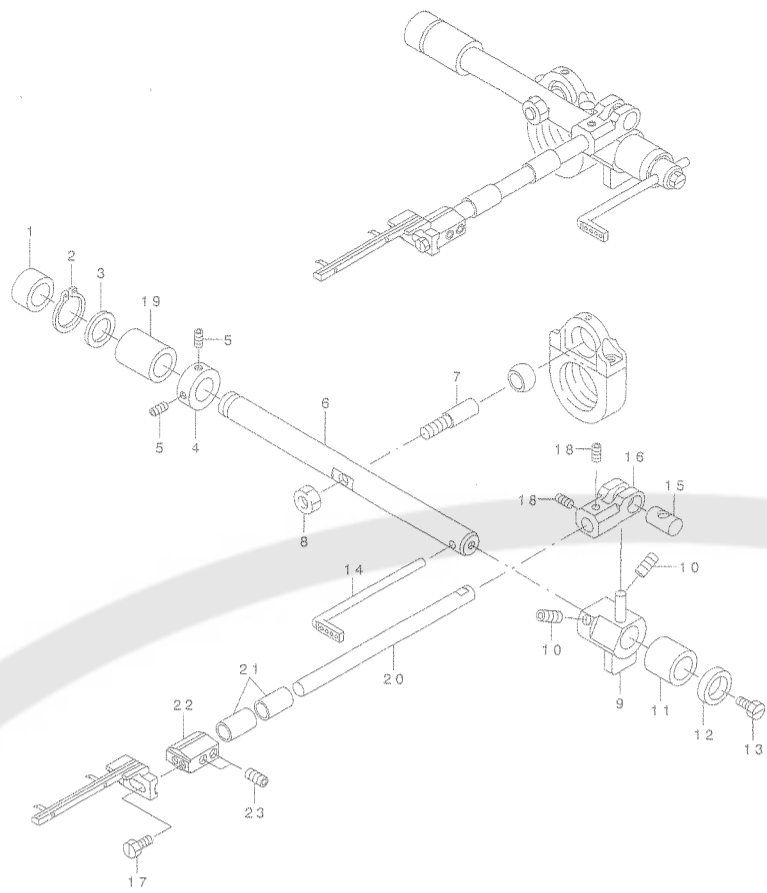
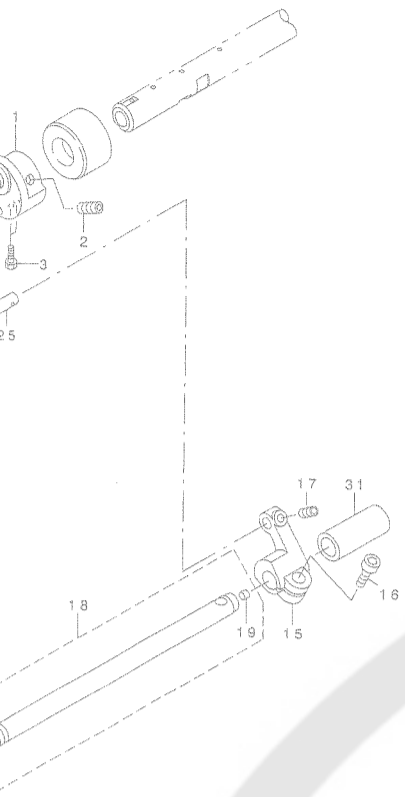
REF.NO	NOTE	PART NO.	DESCRIPTION	Qty
1		311-24506	FEED DRIVING SHAFT COLLAR	1
2		311-70004	SCREW (M5X0.8-5) 82	2
3		311-22005	FEED DRIVING LEVER	1
4		311-63900	SCREW (M6X1-18) 62	1
5		311-21908	FEED DRIVING SHAFT	1
6		311-69808	SCREW (M10X1.5-10) 82	1
7		311-80409	OIL WICK	1
8		311-24605	SCREW (M10X1.5-4) 60	1
9		311-21700	DRIVING SHAFT BUSHING (CENTER)	1
10		311-78700	OIL SEAL	1
11		311-21809	RIVING SHAFT BUSHING (RIGHT)	1
12		311-22963	FEED BASE ASM.	1
13		311-22955	FEED BASE ASM.1	(1)
14		311-22906	FEED BASE	(1)
15		311-23300	FEED BASE BUSHING	(2)
16		311-70301	SCREW (M6X1-6) 82	(2)
17		311-23805	THRUST WASHER	(1)
18		311-75409	E RING	(1)
19		311-23052	FEED BASE SHAFT	(1)
20		311-61102	SCREW (M3X0.5-2.6) 60	(1)
21		311-70301	SCREW (M6X1-6) 82	(2)
22		311-23607	FEED FITTING BASE (LOWER)	(1)
23		311-70004	SCREW (M5X0.8-5) 82	(3)
24		311-23508	FEED LIPT LINK	(1)
25		311-23151	LINK PIN	(1)
26		311-23201	SPHERE	(1)
27		311-69501	SCREW (M3X0.5-3) 82	(1)
28		311-23904	UPPER KNIFE ROD PIN	(1)
29		311-23409	FEED LIPT SHAFT LEVER (LEFT)	(1)
30		311-63504	SCREW (M6X1-1.5) 62	(1)
31		311-70509	SCREW (M6X1-12) 82	(1)
32		311-81308	UPPER SHAFT PACKING	1
33		311-21403	FEED DRIVING SHAFT BUSHING	1
34		311-24001	FEED LIPT SHAFT BUSHING (LIPT)	1
35		311-21304	THRUST WASHER	1
36		311-75300	E RING	1
37		311-21502	FEED FITTING BASE	1
38		311-71507	NUT	1
39		311-69402	SCREW (M3X0.5-10) 82	1
40		311-80300	OIL WICK	1
41		311-62308	SCREW (M5X0.8-7) 60	2
42		311-21155	FEED LIPT SHAFT ASM.	1
43		311-21205	PLUG	(2)
44		311-62605	SCREW (M6X0.75-9) 60	1
45		311-21007	FEED LIPT DRIVING LEVER	1
46		311-63504	SCREW (M6X1-15) 62	1
47		311-24100	FEED LIPT SHAFT BUSHING (RIGHT)	1
48		311-78908	OIL SEAL	1

REF.NO	NOTE	PART NO.	DESCRIPTION	Qty
1		311-26907	LOOPER	
2		311-70004	SCREW	
3		311-62506	SCREW	
4		311-27152	LOOPER	
5		311-27103	LOOPER	
6		311-27509	LOOPER	
7		311-27202	LOOPER	
8		311-80607	OIL WICK	
9		311-70400	SCREW	
10		311-27301	LOOPER	
11		311-60807	SCREW	
12		311-27400	PIN	
13		311-27004	LOOPER	
14		311-69006	SCREW	
15		311-26709	LOOPER	
16		311-63900	SCREW	
17		311-70103	SCREW	
18		311-27756	LOOPER	
19		311-27806	PLUG	
20		311-27608	LOOPER	
21		311-70301	SCREW	
22		311-63504	SCREW	
23		311-68800	SCREW	
24		311-75201	WASHER	
25		311-27400	PIN	
26	#02	311-54651	LOOPER	
27	#01	311-54651	LOOPER	
28		311-54602	LOOPER	
29		311-54503	NEEDLE	
30		311-64601	SCREW	
31		311-29406	LOOPER	
32		311-29307	LOOPER	
33		311-78809	OIL SEA	
34		311-29604	UPPER K	
35		311-70004	SCREW	
36		311-29208	LOOPER	
37		311-72901	THRUST	
38		311-75409	E RING	

Note #01...FOR 2-NEEDL  
#02...FOR 4-NEEDL

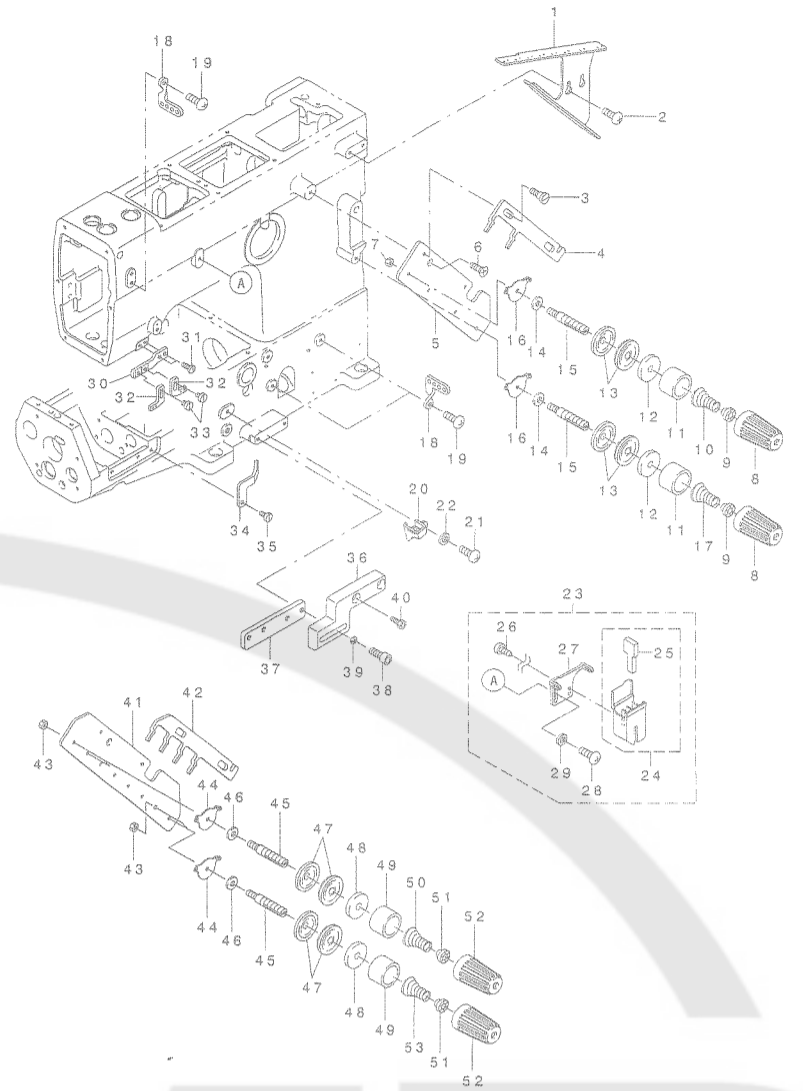
### 9. SPREADER COMPONENTS

スプレッダー関係



### 10. THREAD TENSION COMPONENTS

糸調子関係



DESCRIPTION	Qty
R ECCENTRIC (M5X0.8-5) 82	1
R ECCENTRIC (M3X0.5-8.2) 60	2
R ROD ASM.	1
R ROD	(7)
R ECCENTRIC BUSHING	(1)
R LINK	(1)
ICK (M4X0.7-8) T82	(1)
R ROD HOLD SPRING (M4X0.7-8) 60	(1)
R ROD COVER (M3X0.5-6) 10	1
R BASE LEVER (M6X1-15) 62	1
R BASE SHAFT (M4X0.7-5) 82	1
R BASE SHAFT	(2)
R BASE (LOWER) (M6X1-6) 82	1
(M6X1-12) 62	1
(M5X0.8-12) 90	1
R	1
R NEEDLE HOLDER ASM.	4
R NEEDLE HOLDER ASM.	2
R	(1)
E HOLDER (REAR) (M3X0.5-5) 62	(1)
R BASE SHAFT BUSHING	1
R BASE BUSHING (CENTER)	1
EAL	1
KNIFE SHAFT COLLAR (M5X0.8-5) 82	2
R BASE SHAFT BUSHING	1
T WASHER	1
G	1

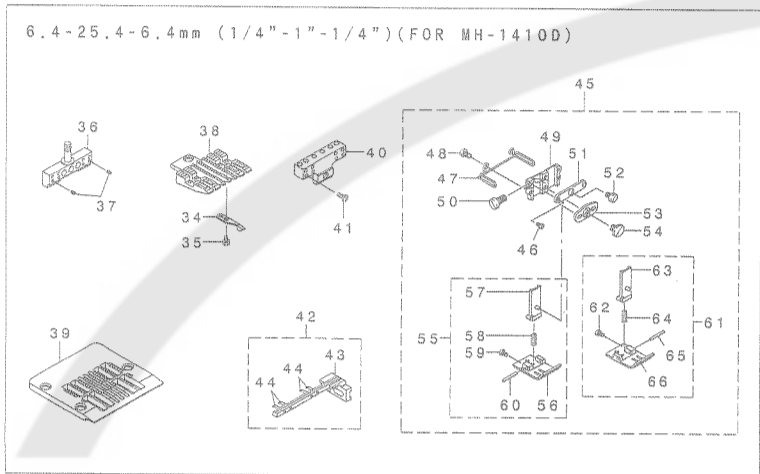
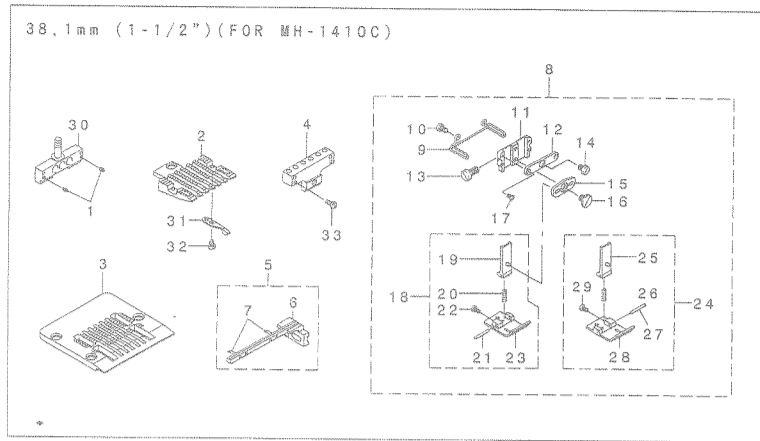
REF.NO	NOTE	PART NO.	DESCRIPTION	Qty
1		311-79005	OIL SEAL	1
2		311-75607	C RING	1
3		311-21304	THRUST WASHER	1
4		311-29505	NEEDLE ROD CRANK SHAFT COLLAR	1
5		311-70004	SCREW (M4X0.7-4) 82	2
6		311-29703	SPREADER DRIVING SHAFT	1
7		311-28705	PIN SCREW	1
8		311-71200	NUT	1
9		311-28903	SPREADER CROSSWISE SHAKE LEVER	1
10		311-70004	SCREW (M4X0.7-4) 82	2
11		311-28507	SPREADER SHAFT BUSHING (FRONT)	1
12		311-79609	OIL SEAL	1
13		311-61409	SCREW (M4X0.7-8) 40	1
14		311-26402	LOOPER BALANCE	1
15		311-29000	CROSSWISE SHAFT LEVER PIN	1
16		311-28804	SPREADER CROSSWISE SHAFT LEVER	1
17		311-68701	SCREW (M4X0.7-8) 90	1
18		311-69600	SCREW (M4X0.7-4) 82	2
19		311-28408	SPREADER SHAFT BUSHING (RIAR)	1
20		311-27905	SPREADER CROSSWISE SHAFT	1
21		311-28606	CROSSWISE SHAFT BUSHING	2
22		311-29109	SPREADER BASE	1
23		311-70004	SCREW (M4X0.7-4) 82	2

REF.NO	NOTE	PART NO.	DESCRIPTION	Qty
1		311-31204	THREAD GUIDE PLATE	1
2		311-68404	SCREW (M4X0.7-8) 45	2
3		311-66606	STEP SCREW (M4X0.7-2.1) D60	2
4	#01	311-31006	THREAD RELEASE PLATE	1
5	#01	311-31105	THREAD TENSION BASE	1
6		311-69204	SCREW (M4X0.7-10) 10	1
7	#01	311-71606	NUT	3
8	#01	303-82907	THREAD TENSION PICK-UP	4
9	#01	311-32400	THREAD TENSION SPRING BUSHING	4
10	#01	311-32103	THREAD TENSION SPRING	2
11	#01	303-62909	THREAD TENSION SPRING SHIELD	4
12	#01	311-31907	FELT	4
13	#01	311-32301	THREAD TENSION DISK	8
14	#01	311-73404	WASHER	4
15	#01	311-32202	THREAD TENSION ROD	4
16	#01	311-32509	THREAD TENSION BASE THREAD WAY	4
17	#01	311-32608	LOOPER THREAD TENSION SPRING	2
18		311-04805	LOOPER THREAD WAY (RIGHT)	3
19		311-68404	SCREW (M4X0.7-8) 45	3
20		311-26303	LOOPER THREAD WAY (RIGHT)	1
21		311-61409	SCREW (M4X0.7-8) 45	1
22		311-73602	WASHER	1
23		311-03161	SILICON DIVICE ASM.	1
24		311-03153	SILICON TANK ASM.	(1)
25		311-03500	SILICON FALT	(1)
26		311-70806	SCREW (3X6)	(2)
27		311-03203	NEEDLE THREAD WAY	(1)
28		311-61409	SCREW (M4X0.7-8) 40	(1)
29		311-73602	WASHER	(1)
30		311-12600	BALANCE FITTING PLATE	1
31		311-60609	SCREW (M4X0.7-10) 40	2
32		311-12501	NEEDLE THREAD BALANCE	2
33		311-61706	SCREW (M4X0.7-5.4) 60	2
34		311-26204	LOOPER THREAD WAY (CENTER)	1
35		311-60807	SCREW (M4X0.7-8) 60	1
36		311-40007	RULER FITTING BASE 1	1
37		311-40106	RULER FITTING BASE 2	1
38		311-63306	SCREW (M6X1-15) 62	2
39		311-74006	WASHER	2
40		311-63306	SCREW (M6X1-15) 62	2
41	#02	311-31709	THREAD TENSION BASE	1
42	#02	311-31600	THREAD RELEASE PLATE	1
43	#02	311-71606	NUT	7
44	#02	311-32509	THREAD TENSION BASE THREAD WAY	8
45	#02	311-32202	THREAD TENSION ROD	8
46	#02	311-73404	WASHER	8
47	#02	311-32301	THREAD TENSION DISK	16
48	#02	311-31907	FELT	8
49	#02	303-62909	THREAD TENSION SPRING SHIELD	8
50	#02	311-32103	THREAD TENSION SPRING	4
51	#02	311-32400	THREAD TENSION SPRING BUSHING	8
52	#02	303-82907	THREAD TENSION PICK-UP	8
53	#02	311-32608	LOOPER THREAD TENSION SPRING	4

Note #01...FOR 2-NEEDLE  
#02...FOR 4-NEEDLE

17. GAGE EXCLUSIVE PARTS (2)

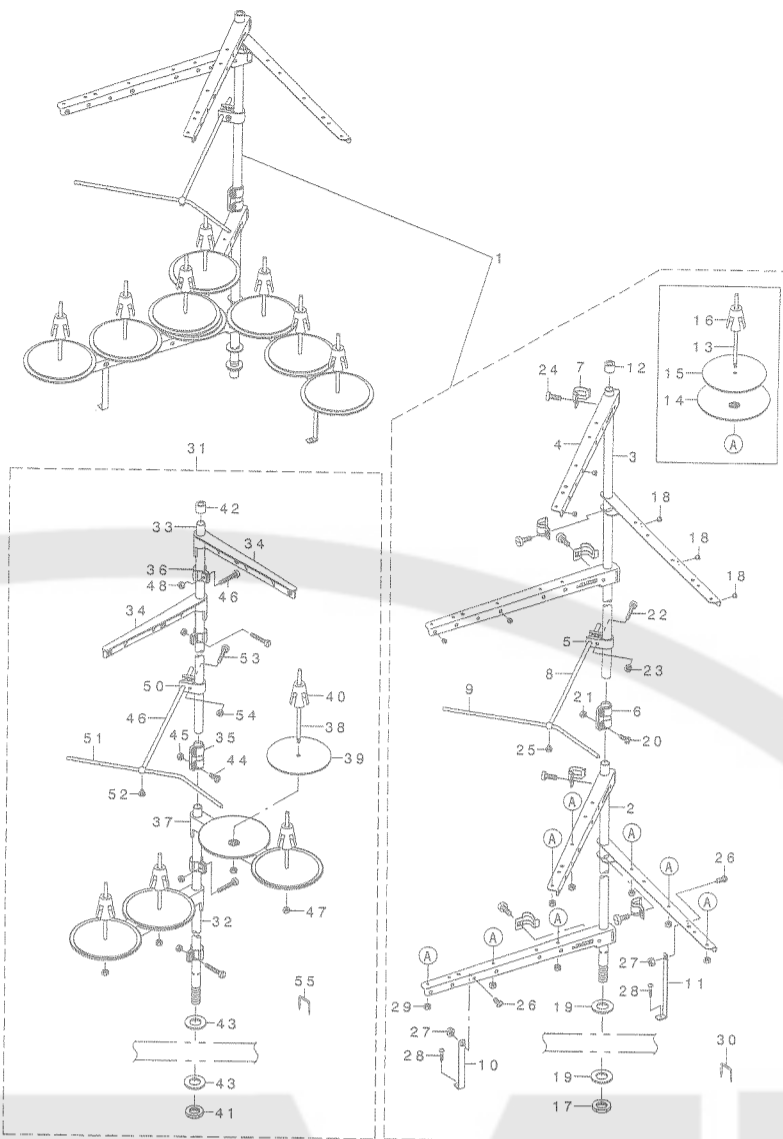
ゲージ専用部品 (2)



REF. NO	NOTE	PART NO.	DESCRIPTION	Qty
1		311-70707	SCREW (1/8X44-2.4) 80	2
2		311-53307	FEED DOG 38.1MM	1
3		311-45204	NEEDLE PLATE 38.1MM	1
4		311-54206	LOOPER HOLDER 38.1MM	1
5		311-55351	SPREADER ASM. 38.1MM	1
6		311-55302	SPREADER 38.1MM	(1)
7		311-55104	SPREADER PIN	(2)
8		311-47259	PRESSER FOOT ASM. 38.1MM	1
9		311-51608	FINGER GUARD	(1)
10		311-61508	SCREW (M3.5X0.6-6) 40	(2)
11		311-51004	PRESSER FOOT (UPPER)	(1)
12		311-51301	PRESSER FOOT GUIDE PLATE	(1)
13		311-61300	SCREW (M5X0.8-10) 40	(1)
14		311-61706	SCREW (M4X0.7-5.4) 60	(1)
15		311-51400	PRESSER FOOT GUIDE PLATE, LOWER	(1)
16		311-66002	STEP-SCREW (M5X0.8-4.5) D60	(1)
17		311-68909	SCREW (M2.5X0.45-6) 10	(2)
18		311-48158	PRESSER FOOT ASM. (LEFT) 38.1MM	(1)
19		311-51152	PRESSER FOOT (LOWER) GUIDE	(1)
20		311-51509	PRESSER FOOT (LOWER) SPRING	(1)
21		311-77207	PRESSER FOOT (LOWER) GUIDE PIN	(1)
22		311-60401	SCREW (M3X0.5-4.2) 60	(1)
23		311-49701	PRESSER FOOT (LEFT) 38.1MM	(1)
24		311-48950	PRESSER FOOT (RIGHT) ASM. 38.1MM	(1)
25		311-51152	PRESSER FOOT (LOWER) GUIDE	(1)
26		311-51509	PRESSER FOOT (LOWER) SPRING	(1)
27		311-77207	PRESSER FOOT (LOWER) GUIDE PIN	(1)
28		311-50501	PRESSER FOOT (RIGHT) 38.1MM	(1)
29		311-60401	SCREW (M3X0.5-4.2) 60	(1)
30		311-46202	NEEDLE CLAMP 38.1MM	1
31		311-53505	NEEDLE HOLDER (FRONT)	2
32		311-60203	SCREW (3/32X56-3.8) 60	4
33		311-62407	SCREW (M3X0.5-7) 40	4
34		311-53505	NEEDLE HOLDER (FRONT)	4
35		311-60203	SCREW (3/32X56-3.8) 60	8
36		311-46301	NEEDLE CLAMP 1/4-1-1/4	1
37		311-70707	SCREW (1/8X44-2.4) 80	4
38		311-53406	FEED DOG 1/4-1-1/4	1
39		311-45303	NEEDLE PLATE 1/4-1-1/4	1
40		311-54305	LOOPER BASE 1/4-1-1/4	1
41		311-62407	SCREW (M3X0.5-7) 40	8
42		311-55450	SPREADER ASM. 1/4-1-1/4	(1)
43		311-55401	SPREADER 1/4-1-1/4	(1)
44		311-55104	SPREADER PIN	(4)
45		311-47358	PRESSER FOOT ASM. 1/4-1-1/4	1
46		311-68909	SCREW (M2.5X0.45-6) 10	(2)
47		311-51608	FINGER GUARD	(1)
48		311-61508	SCREW (M3.5X0.6-6) 40	(2)
49		311-51004	PRESSER FOOT (UPPER)	(1)
50		311-61300	SCREW (M5X0.8-10) 40	(1)
51		311-51301	PRESSER FOOT GUIDE PLATE	(1)
52		311-61706	SCREW (M4X0.7-5.4) 60	(1)
53		311-51400	PRESSER FOOT GUIDE PLATE, LOWER	(1)
54		311-66002	STEP-SCREW (M5X0.8-4.5) D60	(1)
55		311-47952	PRESSER FOOT ASM. (LEFT)	(1)
56		311-49503	PRESSER FOOT (LEFT) 1/4-1-1/4	(1)
57		311-51152	PRESSER FOOT (LOWER) GUIDE	(1)
58		311-51509	PRESSER FOOT (LOWER) SPRING	(1)
59		311-60401	SCREW (M3X0.5-4.2) 60	(1)
60		311-77207	PRESSER FOOT (LOWER) GUIDE PIN	(1)
61		311-48752	PRESSER FOOT (RIGHT) ASM.	(1)
62		311-60401	SCREW (M3X0.5-4.2) 60	(1)
63		311-51152	PRESSER FOOT (LOWER) GUIDE	(1)
64		311-51509	PRESSER FOOT (LOWER) SPRING	(1)
65		311-77207	PRESSER FOOT (LOWER) GUIDE PIN	(1)
66		311-50303	PRESSER FOOT (RIGHT) ASM.	(1)

18. THREAD STAND COMPONENTS

糸立装置関係



REF. NO	NOTE	PART NO.	DESCRIPTION	Qty
1	#02	311-38555	THREAD RAISING DEVICE ASM.	1
2		111-85105	SPOOL REST ROD, LOWER	(1)
3		111-85204	SPOOL REST ROD, UPPER	(1)
4		119-69508	SPOOL REST ARM A	(6)
5		B3304-704-000-A	THREAD GUIDE ARM HOLDER	(1)
6		B3305-704-000-A	SPOOL REST ROD JOINT	(1)
7		B3318-704-L00-A	THREAD GUIDE ARM JOINT	(6)
8		B3309-704-000	THREAD GUIDE ARM	(1)
9		B3311-843-000	LOWER THREAD GUIDE	(1)
10		B3321-704-L00	SPOOL REST ARM SUPPORT, A	(1)
11		B3321-704-LOB	SPOOL REST ARM SUPPORT, B	(1)
12		B3311-704-000	SPOOL REST ROD CAP	(1)
13		B3320-704-L00-A	SPOOL PIN	(8)
14		119-66504	SPOOL REST	(8)
15		B3311-012-000	SPOOL REST CUSHION	(8)
16		111-85501	SPOOL RETAINER	(8)
17		B3317-704-000	NUT	(1)
18		B3319-704-L00	THREAD WAY	(8)
19		WP-1612616-SE	WASHER 16X30X2.6	(2)
20		SM-4051405-SE	SCREW M5 L=14	(2)
21		NM-6050001-SE	NUT M5	(2)
22		SM-6053000-SE	SCREW M5X0.8 L=30	(1)
23		NM-6050001-SE	NUT M5	(1)
24		SM-6061610-SC	SCREW M6 L=15	(6)
25		SS-7110540-SP	SCREW 11/64-40 L=5	(1)
26		SM-4061201-SE	SCREW M6 L=12	(2)
27		NM-6060001-SE	NUT M6	(2)
28		SK-3382001-SE	SCREW D=3.8 L=20	(2)
29		NM-6050001-SE	NUT M5	(8)
30		MAO-11532000	CORD STAPLE	(3)
31	#01	119-69458	THREAD RAISING DEVICE ASM.	1
32		111-85105	SPOOL REST ROD, LOWER	(1)
33		111-85204	SPOOL REST ROD, UPPER	(1)
34		111-85352	THREAD GUIDE ASM.	(2)
35		B3305-704-000-A	SPOOL REST ROD JOINT	(1)
36		111-85402	THREAD GUIDE ARM JOINT	(4)
37		111-85006	SPOOL REST ARM	(2)
38		B3320-704-L00-A	SPOOL PIN	(4)
39		B3311-012-000	SPOOL REST CUSHION	(4)
40		111-85501	SPOOL RETAINER	(4)
41		B3317-704-000	NUT	(1)
42		B3311-704-000	SPOOL REST ROD CAP	(1)
43		WP-1612616-SE	WASHER 16X30X2.6	(2)
44		SM-4051405-SE	SCREW M5 L=14	(2)
45		NM-6050001-SE	NUT M5	(2)
46		SM-4051405-SE	SCREW M5 L=14	(4)
47		NM-6050001-SE	NUT M5	(4)
48		NM-6050001-SE	NUT M5	(4)
49		B3309-704-000	THREAD GUIDE ARM	(1)
50		B3304-704-000-A	THREAD GUIDE ARM HOLDER	(1)
51		B3311-804-000	LOWER THREAD GUIDE	(1)
52		SS-7110540-SP	SCREW 11/64-40 L=5	(1)
53		SM-6053000-SE	SCREW M5X0.8 L=30	(1)
54		NM-6050001-SE	NUT M5	(1)
55		MAO-11532000	CORD STAPLE	(3)

Note #01... FOR 2-NEEDLE  
#02... FOR 4-NEEDLE

19. TABLE COMPONENTS

テーブル関係

TOP INSTALLATION  
卓上式

SEMI-SUBMERGED INSTALLATION  
(SPECIAL ORDER PARTS)  
半沈式 (特別注文部品)

REF. NO NOTE PART NO.

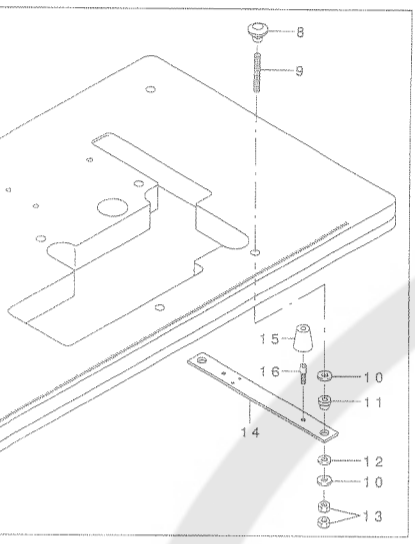
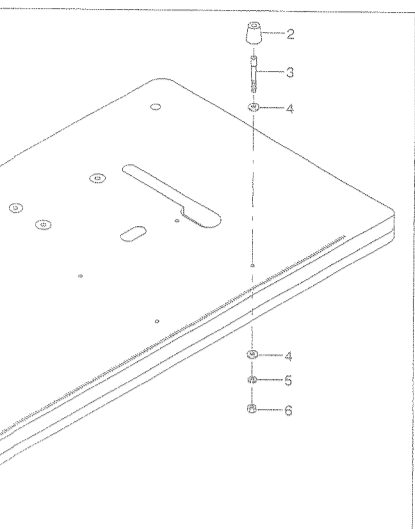
1		311-38803	TABLE
2		311-40403	RUBBER
3		311-40502	PIN SC
4		311-74501	WASHER
5		311-74600	SPRING
6		311-72307	NUT
7		311-41203	TABLE
8		311-40601	NUT
9		311-40700	SCREW
10		311-74808	WASHER
11		311-40809	HOLDING
12		311-40908	HOLDING
13		311-72406	NUT
14		311-41104	HOLDING
15		311-40403	RUBBER
16		311-41005	PIN SC

20. SPECIAL ORDER PARTS COMP

特別注文部品

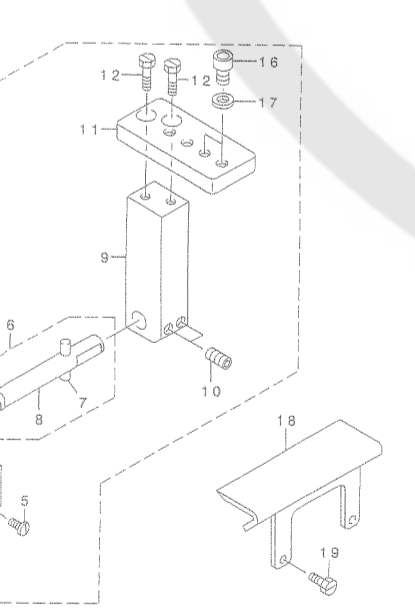
REF. NO NOTE PART NO.

1		311-41658	RULER F
2		311-63306	SCREW (
3		311-74006	WASHER
4		311-41807	STOPPER
5		311-65707	SCREW (
6		311-41955	RULER F
7		311-77306	SPRING
8		311-41906	RULER F
9		311-42003	RULER F
10		311-70301	SCREW (
11		311-41609	RULER F
12		311-63108	SCREW (
13		311-41708	RULER F
14		311-72208	NUT
15		311-42201	CUTTER
16		311-63702	SCREW (
17		311-74006	WASHER
18		311-42102	AUXILIA
19		311-61706	SCREW (



DESCRIPTION	Qty
TOP INSTALLATION	1
RUBBER CUSHION	4
SCREW (M6X1-63)	4
SPRING WASHER	8
WASHER	4
SCREW (M8X1.25-75)	4
SPRING WASHER	8
ANG PLATE RUBBER CUSHION	4
ANG PLATE RUBBER CUSHION	4
ANG PLATE	2
RUBBER CUSHION	4
SCREW (M6X1-16)	4

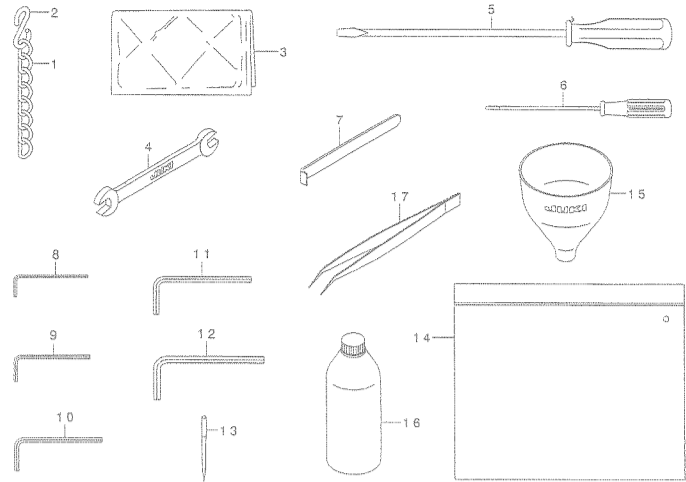
COMPONENTS



DESCRIPTION	Qty
FITTING BASE WHOLE ASM. (M6X1-15) 62	1
SCREW (M3X0.5-2) 40	(2)
FITTING BASE SHAFT ASM.	(1)
SPRING PIN	(1)
FITTING BASE SHAFT	(1)
FITTING BASE 5 (M6X1-6) 82	(1)
FITTING BASE 3 (M5X0.8-10) 62	(2)
FITTING BASE 4	(1)
LOWER SPRING (M6X1-10) 62	(2)
COVER (M4X0.7-5.4) 60	1
	2

21. ACCESSORIE PARTS COMPONENTS

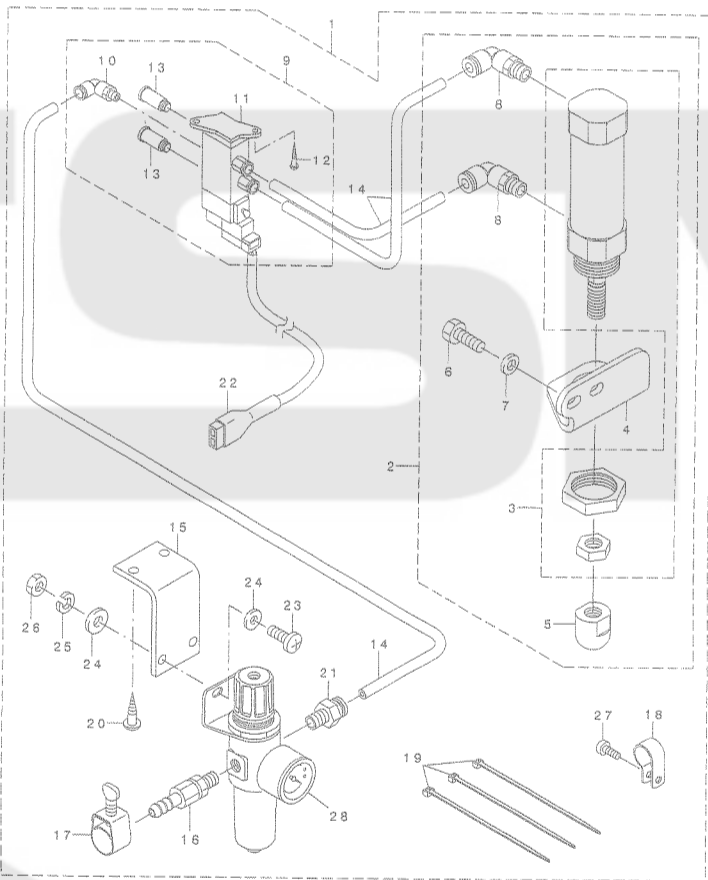
付属品関係



REF.NO	NOTE	PART NO.	DESCRIPTION	Qty
1		B8103-980-000	CHAIN	1
2		B8133-019-000	S SHAPED HOOK	2
3		B9118-232-000	VINYL COVER	1
4		B9113-012-000	WRENCH (9X10)	1
5		229-33006	SCREW DRIVER LARGE	1
6		123-47308	SCREW DRIVER (SMALL)	1
7		B9101-490-000	DRIVER	1
8		GCT-02904000	SPANNER	1
9		J1066-000-000	HEXAGONAL WRENCH KEY	1
10		B9140-372-000	HEXAGONAL WRENCH SMALL	1
11		GCT-02906000	HEXAGONAL SPANNER	1
12		B9142-372-000	HEXAGONAL WRENCH (7.1X8.1)	1
13		HDV-570B2100	NEEDLE DVX57 #21	10
14		229-32800	ACCESSORIE BAG	1
15		B9107-804-000	FUNNEL	1
16		MDF-RX2001L0	DEFRIX OIL, NO.2 900CC	1
17		122-88403	TWEEZERS	1

22. PRESSER LIFTER COMPONENTS

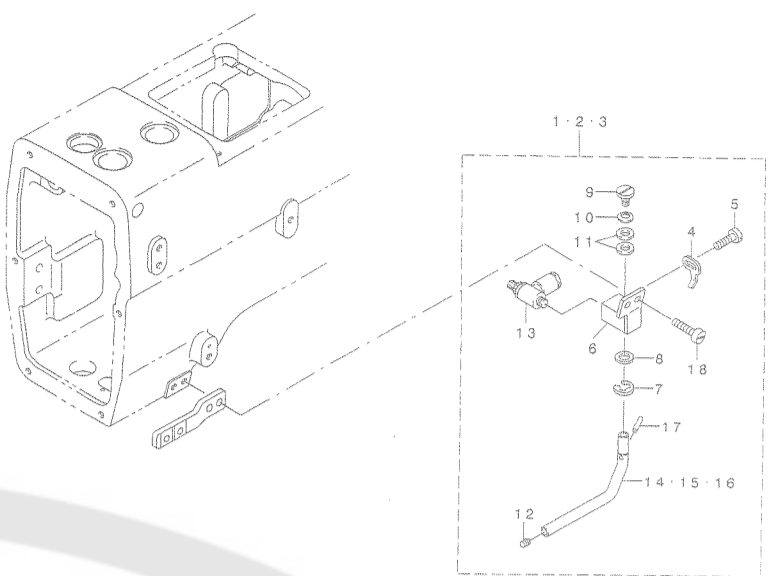
押え上げ装置関係



REF.NO	NOTE	PART NO.	DESCRIPTION	Qty
1		GAK-A22010B0	PRESSER LIFTER	1
2		GAK-A22010A0	PRESSER LIFTING CYLINDER ASM.	(1)
3		GAK-A2201000	PRESSER LIFTING CYLINDER	(1)
4		GAK-A2203000	CYLINDER FITTING BASE	(1)
5		GAK-A2204000	AIR CYLINDER ROD TIP	(1)
6		311-63900	SCREW (M6X15) 82	(2)
7		311-73107	WASHER	(2)
8		GAK-A2202000	JOINT 6-PT1/8	(2)
9		GAK-A22050A0	ELECTROMAGNETIC VALVE ASM.	(1)
10		GAK-A2207000	JOINT	(1)
11		GAK-A2205000	ELECTROMAGNETIC VALVE	(1)
12		GAK-A2223000	SCREW (φ 3.1X16)	(2)
13		GAK-A2206000	SILENCER	(2)
14		GAK-A2213000	NYLONS TUBE	(3)
15		GAK-A2216000	REGULATOR FITTING PLATE	(1)
16		GAK-A2217000	HOSE UNION	(1)
17		GAK-A2218000	HOSE BAND	(1)
18		GAK-A2219000	CORD CLAMP	(1)
19		GAK-A2220000	CABLE BAND	(3)
20		GAK-A2222000	WOOD SCREW (φ 5.1X16)	(2)
21		GAK-A2214000	CONNECTOR	(1)
22		GAK-A22080A0	ELECTROMAGNETIC VALVE CORD	(1)
23		311-68602	SCREW (M5-0.8X16) 41	(2)
24		311-73305	WASHER	(4)
25		311-73503	SPRING WASHER	(2)
26		311-71408	NUT	(2)
27		311-68404	SCREW (M4X0.7-8) 45	(1)
28		GAK-A2215000	REGULATOR	(1)

23. OPTIONAL COMPONENTS

オプション関係



REF.NO	NOTE	PART NO.	DESCRIPTION	Qty
1	#01	311-42565	NEEDLE COOLER DEVICE ASM.	1
2	#02	311-43068	NEEDLE COOLER DEVICE ASM.	1
3	#03	311-43167	NEEDLE COOLER DEVICE ASM.	1
4		311-42904	AIR PIPE SET PLATE	(1)
5		311-65608	SCREW (M3X0.5-4.2) 60	(2)
6		311-42755	AIR PIPE BRACKET ASM.	(1)
7		311-75904	E RING	(1)
8		311-75102	WASHER	(1)
9		311-66705	SCREW (M4X0.7-4) D60	(1)
10		311-75003	SPRING WASHER	(1)
11		311-73305	WASHER	(2)
12		311-69800	SCREW (M4X0.7-4) 82	(1)
13		311-82009	SPEER CONTROLLER M5	(1)
14	#01	311-42557	AIR PIPE	(1)
15	#02	311-43050	AIR PIPE	(1)
16	#03	311-43159	AIR PIPE	(1)
17		311-42607	SPRING PIN	(1)
18		311-60906	SCREW (M3X0.5-4.2) 60	(2)

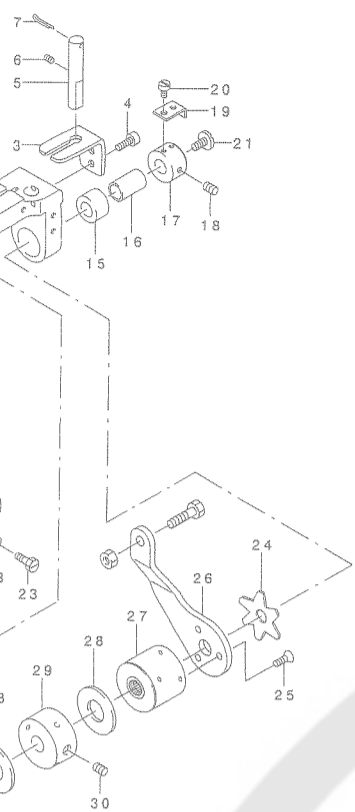
Note #01...FOR (MH-1410A)  
2-NEEDLE 31.8MM  
#02...FOR (MH-1410B,C)  
2-NEEDLE 34.9 & 38.1MM  
#03...FOR (MH-1410D)  
4-NEEDLE 1/4-1-1/4

(注) ネジ頭形状は、パーツの品名欄に番号で表示されています。  
例) 品名 screw(M4x0.7-10) □60 6→平ネジ 0→すりわり(マイナス) 8→六角  
D→六角ネジ T→すりわりネジ  
(NOTE) Shapes of the screws are displayed with the numbers in the column of parts description.  
EX.) Description SCREW(M4x0.7-10) □60 6→flat head screw 0→slot(minus) 8→六角ネジ D→Hinge screw T→Basic triangle screw

種類区分 Kind of screw								
1	2	3	4	5	6	7	8	9
皿	Oval	丸頭	傘	バインド	平	Oval filler	止め	六角
Flat head	counter-sunk	Round head	Pan head	Binding head	Flat head	Flat filler	Setscrew	Hexagon head

頭区分 Head of screw					
0	1	2	3	4	5
すりわり	十字穴	六角穴	すりわり無し	四角穴	すりわり十字
Slot	Cross recessed	Hexagon socket	Slotless	Square socket	Cross slot

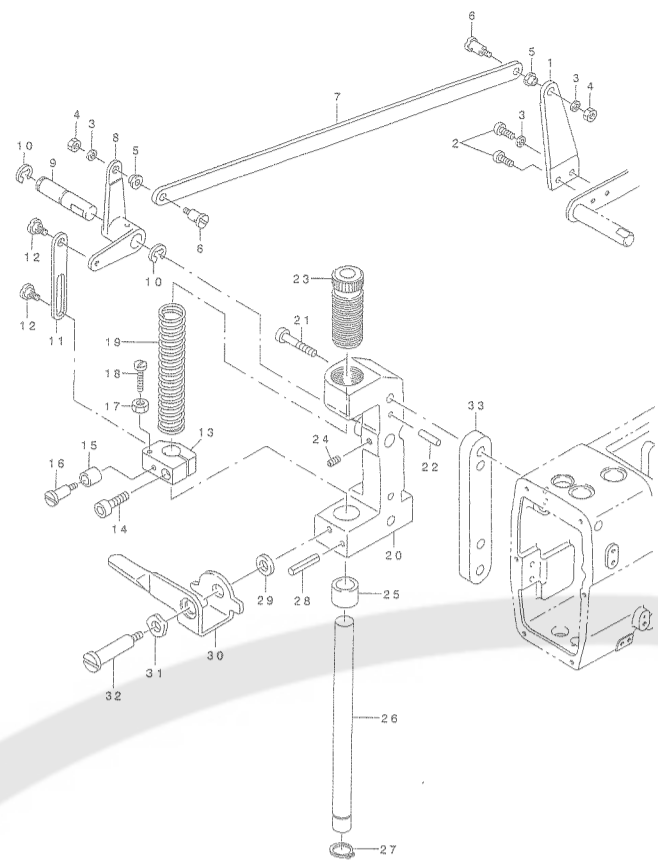
PARTS (2)



DESCRIPTION	Qty
FEED ROLLER YOKE	1
(M6X1-20) 62	1
FEED ROLLER YOKE GUIDE	1
(M4X0.7-8) 62	2
FEED ROLLER YOKE PIN	1
(M6X1-6) 82	1
SPRING RING	1
WASHER	1
DRIVING SHAFT	1
DRIVING SHAFT BUSHING	1
DRIVING SHAFT BUSHING	1
TENSION SLEEVE	1
DRIVING COLLAR	1
(M5X0.8-5) 82	2
DRIVING SCREW STAY	1
(M3X0.5-5) 60	2
(M5X0.8-12) 60	1
PLATE COVER	1
(M4X0.7-8) 60	5
TENSION SPRING	1
(M4X0.7-7.3) 10	3
PLATE (RIGHT)	1
SLEEVE ASM. (RIGHT)	1
PLATE	2
SPACER	1
(M6X1-8) T82	1
SLEEVE ASM. (LEFT)	1
FEED ROLLER COVER	1
(M3X0.8-10) 40	3
FEED ROLLER	1
FEED ROLLER	1
FEED ROLLER	1
FEED ROLLER COVER	1
SEAL	1

14. CLOTH PULLER EXCLUSIVE PARTS (3)

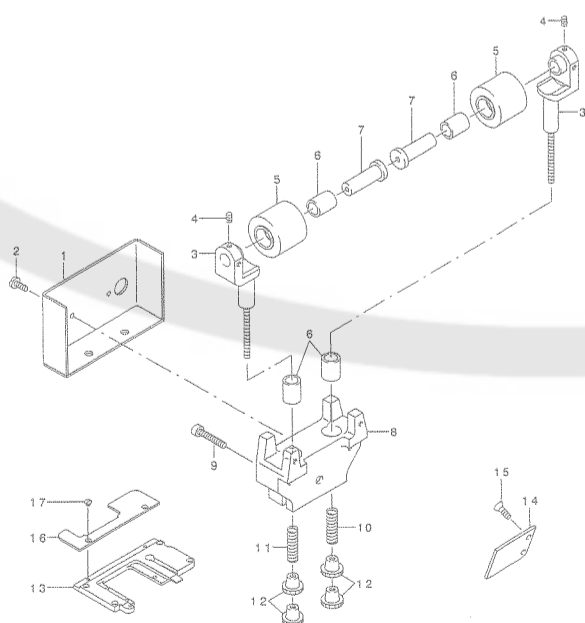
先引き装置専用部品 (3)



REF.NO	NOTE	PART NO.	DESCRIPTION	Qty
1		MAV-07254000	UPPER ROLLER LIFTER (RIGHT)	1
2		311-65400	SCREW (M4X0.7-10) 40	2
3		311-73602	WASHER	3
4		311-72000	NUT	2
5		MAV-07255000	FLEXIBLE WIRE CLAMP BUSHING	2
6		311-67000	STEP-SCREW (11/64X40-6) D60	2
7		MAV-07253000	LIFTER CONNECTING PLATE	1
8		MAV-07251000	UPPER FEED ROLLER LIFTER (LEFT)	1
9		MAV-07252000	UPPER FEED ROLLER LIFTER PIN	1
10		311-75409	E RING	2
11		MAV-07250000	LIFTING CONNECTING PLATE	1
12		311-66903	STEP-SCREW (3/16X32-2.2) D60	2
13		MAV-07247000	ROLLER PRESS BAR BRACKET	1
14		311-62803	SCREW (M5X0.8-14) 62	1
15		MAV-07248000	LIFTING LEVER SLEEVE	1
16		311-67109	STEP-SCREW (11/64X40-5.5) D60	1
17		311-72109	NUT	1
18		311-62100	SCREW (11/64X40-26) 60	1
19		MAV-07246000	ROLLER PRESS SPRING	1
20		MAV-07242000	UPPER FEED ROLLER BRACKET	1
21		311-63207	SCREW (M6X1-40) 62	2
22		311-03906	KNOCK PIN	2
23		MAV-07244000	ROLLER PRESS BAR BUSHING, UPPER	1
24		311-70301	SCREW (M6X1-6) 82	1
25		MAV-07243000	ROLLER PRESS BAR BUSHING, LOWER	1
26		MAV-07245000	UPPER FEED ROLLER PRESS BAR	1
27		311-75607	C RING	1
28		311-77405	SPRING PIN	1
29		311-73404	WASHER	1
30		MAV-07249000	UPPER ROLLER LIFTING LEVER	1
31		311-74303	WAVE WASHER	1
32		311-66804	STEP-SCREW (M6X1-9) D60	1
33		MAV-07241000	SPACER	1

15. CLOTH PULLER EXCLUSIVE PARTS (4)

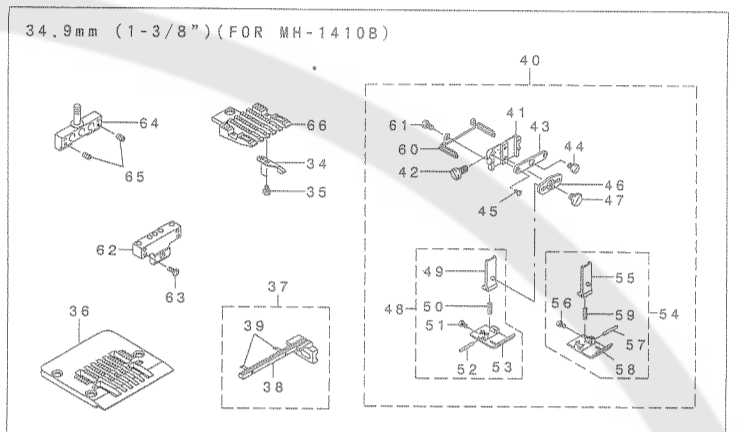
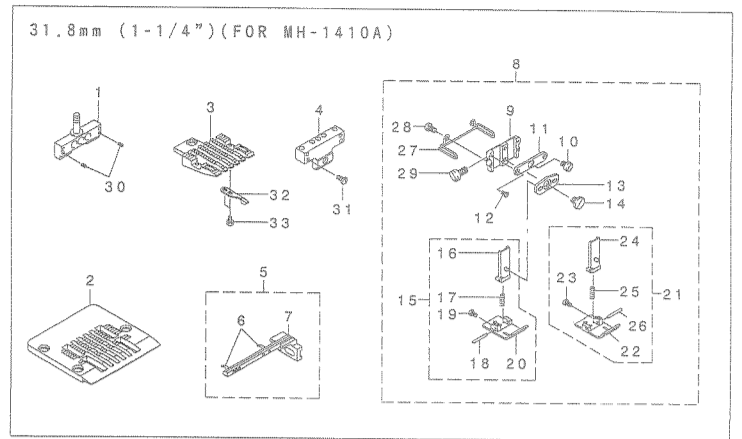
先引き装置専用部品 (4)



REF.NO	NOTE	PART NO.	DESCRIPTION	Qty
1		MAV-07265000	LOWER FEED ROLLER COVER	1
2		311-61904	SCREW (1/8X44-2.1) 40	2
3		MAV-07259000	LOWER ROLLER FITTING BASE ASM.	2
4		311-69303	SCREW (M4X0.7-4) 82	4
5		MAV-07256000	LOWER FEED ROLLER	2
6		MAV-07257000	LOWER FEED ROLLER BUSHING	4
7		MAV-07258000	LOWER FEED ROLLER PIN	2
8		MAV-07264000	LOWER FEED ROLLER BRACKET	1
9		311-63801	SCREW (M6X1-20) 62	2
10		MAV-07262000	FITTING BASE SPRING (RIGHT)	1
11		MAV-07261000	FITTING BASE SPRING (LEFT)	1
12		MAV-07283000	ADJUSTING PICK-UP NUT	4
13		MAV-07266000	THROAT PLATE FITTING BASE	1
14		MAV-07267000	CYLINDER COVER (REAR)	1
15		311-69006	SCREW (M3X0.5-6) 10	2
16		MAV-07268000	CYLINDER COVER (UPPER)	1
17		MAV-07269000	SCREW (M4X0.7-6) 10	2

16. GAGE EXCLUSIVE PARTS (1)

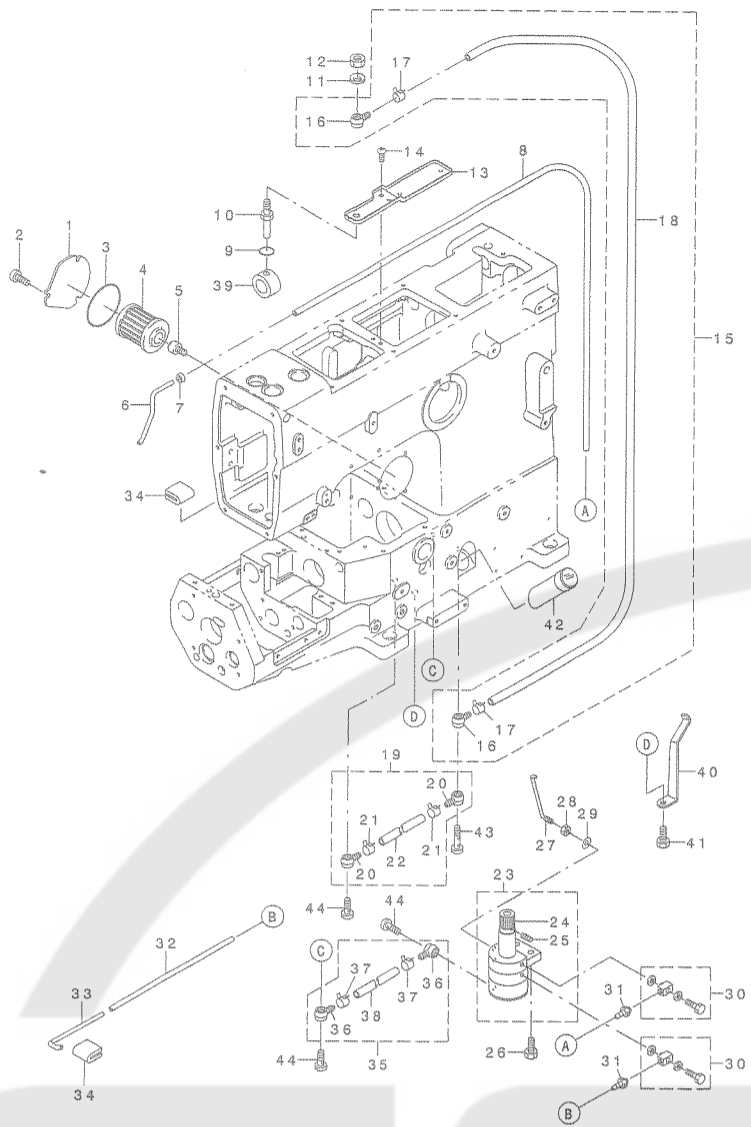
ゲージ専用部品 (1)



REF.NO	NOTE	PART NO.	DESCRIPTION	Qty
1		311-46004	NEEDLE CLAMP 31.8MM	1
2		311-45006	NEEDLE PLATE 31.8MM	1
3		311-53109	FEED DOG 31.8MM	1
4		311-54008	LOOPER HOLDER 31.8MM	1
5		311-55054	SPREADER ASM. 31.8MM	1
6		311-55104	SPREADER PIN	(2)
7		311-55005	SPREADER 31.8MM	(1)
8		311-47150	PRESSER FOOT ASM. 31.8MM	1
9		311-51004	PRESSER FOOT (UPPER)	(1)
10		311-61706	SCREW (M4X0.7-5.4) 60	(1)
11		311-51301	PRESSER FOOT GUIDE PLATE	(1)
12		311-68909	SCREW (M2.5X0.45-6) 10	(2)
13		311-51400	PRESSER FOOT GUIDE PLATE, LOWER	(1)
14		311-66002	STEP-SCREW (M5X0.8-4.5) D60	(1)
15		311-48059	PRESSER FOOT ASM. (LEFT) 31.8MM	(1)
16		311-51152	PRESSER FOOT (LOWER) GUIDE	(1)
17		311-51509	PRESSER FOOT (LOWER) SPRING	(1)
18		311-77207	PRESSER FOOT (LOWER) GUIDE PIN	(1)
19		311-60401	SCREW (M3X0.5-4.2) 60	(1)
20		311-49602	PRESSER FOOT (LEFT) 31.8MM	(1)
21		311-48851	PRESSER FOOT (RIGHT) ASM. 31.8MM	(1)
22		311-50402	PRESSER FOOT (RIGHT) 31.8MM	(1)
23		311-60401	SCREW (M3X0.5-4.2) 60	(1)
24		311-51152	PRESSER FOOT (LOWER) GUIDE	(1)
25		311-51509	PRESSER FOOT (LOWER) SPRING	(1)
26		311-77207	PRESSER FOOT (LOWER) GUIDE PIN	(1)
27		311-51608	FINGER GUARD	(1)
28		311-61508	SCREW (M3.5X0.6-6) 40	(2)
29		311-61300	SCREW (M5X0.8-10) 40	(1)
30		311-70707	SCREW (1/8X44-2.4) 80	2
31		311-62407	SCREW (M3X0.5-7) 40	4
32		311-53505	NEEDLE HOLDER (FRONT)	2
33		311-60203	SCREW (3/32X56-3.8) 60	4
34		311-53505	NEEDLE HOLDER (FRONT)	2
35		311-60203	SCREW (3/32X56-3.8) 60	4
36		311-45105	NEEDLE PLATE 34.9MM	1
37		311-55252	SPREADER ASM. 34.9MM	1
38		311-55203	SPREADER 34.9MM	(1)
39		311-55104	SPREADER PIN	(2)
40		311-47051	PRESSER FOOT ASM. 34.9MM	1
41		311-51004	PRESSER FOOT (UPPER)	(1)
42		311-61300	SCREW (M5X0.8-10) 40	(1)
43		311-51301	PRESSER FOOT GUIDE PLATE	(1)
44		311-61706	SCREW (M4X0.7-5.4) 60	(1)
45		311-68909	SCREW (M2.5X0.45-6) 10	(2)
46		311-51400	PRESSER FOOT GUIDE PLATE, LOWER	(1)
47		311-66002	STEP-SCREW (M5X0.8-4.5) D60	(1)
48		311-47853	PRESSER FOOT ASM. (LEFT) 34.9MM	(1)
49		311-51152	PRESSER FOOT (LOWER) GUIDE	(1)
50		311-51509	PRESSER FOOT (LOWER) SPRING	(1)
51		311-60401	SCREW (M3X0.5-4.2) 60	(1)
52		311-77207	PRESSER FOOT (LOWER) GUIDE PIN	(1)
53		311-49404	PRESSER FOOT (LEFT) 34.9MM	(1)
54		311-48653	PRESSER FOOT (RIGHT) ASM. 34.9MM	(1)
55		311-51152	PRESSER FOOT (LOWER) GUIDE	(1)
56		311-60401	SCREW (M3X0.5-4.2) 60	(1)
57		311-77207	PRESSER FOOT (LOWER) GUIDE PIN	(1)
58		311-50204	PRESSER FOOT (RIGHT) 34.9MM	(1)
59		311-51509	PRESSER FOOT (LOWER) SPRING	(1)
60		311-51608	FINGER GUARD	(1)
61		311-61508	SCREW (M3.5X0.6-6) 40	(2)
62		311-54107	LOOPER HOLDER 34.9MM	1
63		311-62407	SCREW (M3X0.5-7) 40	4
64		311-46103	NEEDLE CLAMP 34.9MM	1
65		311-70707	SCREW (1/8X44-2.4) 80	2
66		311-53208	FEED DOG 34.9MM	1

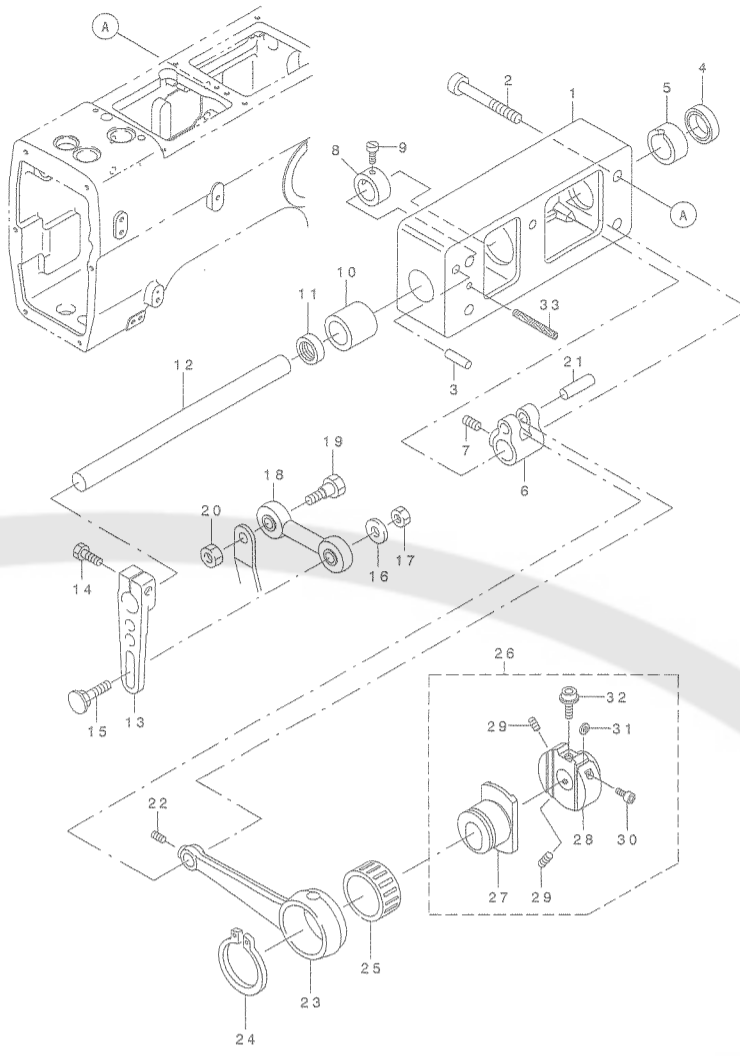
11. LUBRICATION MECHANISM COMPONENTS

給油関係



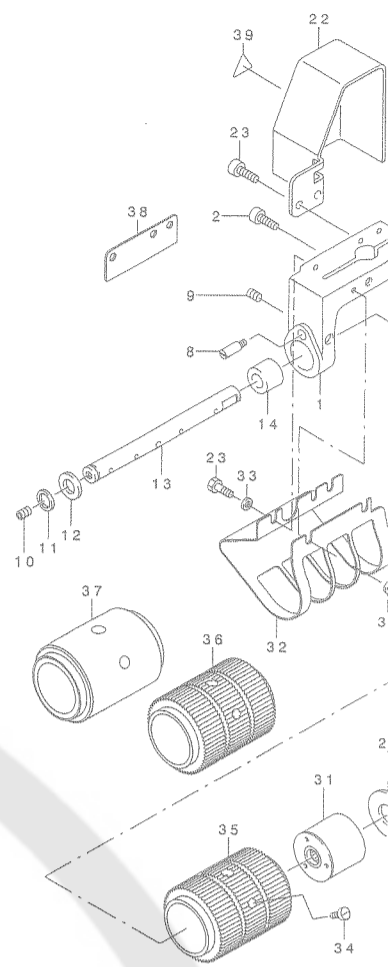
12. CLOTH PULLER EXCLUSIVE PARTS (1)

先引き装置専用部品 (1)



13. CLOTH PULLER EXCLUSIVE PARTS (2)

先引き装置専用部品 (2)



REF.NO	NOTE	PART NO.	DESCRIPTION	Qty
1		311-04904	OIL FILTER COVER	1
2		311-68404	SCREW (M4X0.7-8) 45	3
3		311-81407	FILTER CAP O RING	1
4		118-43208	CARTRIDGE FILTER	1
5		311-35502	FILTER JOINT	1
6		311-35700	SUCTION PIPE	1
7		311-35106	SUCTION PIPE BUSHING	1
8		311-34703	OIL PIPE	1
9		311-81100	PACKING	1
10		311-34208	OIL TUBE	1
11		311-74204	SPRING WASHER	1
12		311-71804	NUT	1
13		311-34000	OIL RESERVOIR	1
14		311-68503	SCREW (M4X0.7-5) 45	2
15		311-34455	OIL PIPE ASM.	1
16		311-35601	OIL TUBE JOINT, ONE WAY	(2)
17		311-36104	OIL TUBE CLAMP	(2)
18		311-34406	OIL PIPE	(1)
19		311-34554	OIL PIPE ASM.	1
20		311-35601	OIL TUBE JOINT, ONE WAY	(2)
21		311-36104	OIL TUBE CLAMP	(2)
22		311-34505	OIL PIPE	(1)
23		311-36252	OIL PUMP ASM. 1	1
24		311-36302	OIL PUMP DRIVING WORM GEAR	(1)
25		311-69600	SCREW (M4X0.7-4) 82	(2)
26		311-63900	SCREW (M6X1-15) 62	2
27		311-35205	OIL PIPE	1
28		311-72505	NUT	1
29		311-74907	WASHER	1
30		311-35908	UNIVERSAL ELBOW	2
31		311-36005	BAMBOO JOINT	2
32		311-34804	OIL PIPE	1
33		311-34802	SUCTION PIPE	1
34		311-37409	FELT	2
35		311-34356	OIL PIPE ASM.	1
36		311-35601	OIL TUBE JOINT, ONE WAY	(2)
37		311-36104	OIL TUBE CLAMP	(2)
38		311-34307	OIL PIPE	(1)
39		311-34109	OIL SLEEVE	1
40		311-37300	OIL PIPE SUPPORT	1
41		311-68503	SCREW (M4X0.7-8) 45	1
42		311-03609	OIL GAUGE	1
43		311-35007	FITTING STUD (LONG)	1
44		311-34901	FITTING STUD	3

REF.NO	NOTE	PART NO.	DESCRIPTION	Qty
1		MAV-07211000	UPPER ROLLER SHAFT BRACKET	1
2		311-64205	SCREW (M6X1-18) 62	4
3		311-03906	NKNOCK PIN	2
4		311-79005	OIL SEAL	1
5		MAV-07209000	UPPER ROLLER SHAFT BUSHING	1
6		MAV-07205000	UPPER FEED ROLLER SHAFT LEVER	1
7		311-70301	SCREW (M6X1-6) 82	2
8		MAV-07208000	UPPER FEED ROLLER SHAFT COLLAR	1
9		311-62209	SCREW (11/64X40-5.5) 60	2
10		MAV-07210000	UPPER ROLLER SHAFT BUSHING	1
11		311-79708	OIL SEAL	1
12		MAV-07207000	UPPER FEED ROLLER SHAFT	1
13		MAV-07212000	UPPER FEED ROLLER LEVER	1
14		311-63801	SCREW (M6X1-20) 62	1
15		MAV-07213000	UPPER FEED ROLLER LEVER PIN	1
16		311-73404	WASHER	1
17		311-71903	NUT	1
18		MAV-07214000	PULLER LINK	1
19		311-66101	SCREW (1/4X40-11) 93	1
20		311-71903	NUT	1
21		MAV-07206000	ROD PIN	1
22		311-69600	SCREW (M4X0.7-4) 82	1
23		MAV-07203000	UPPER FEED ROLLER DRIVING ROD	1
24		311-75805	C RING	1
25		MAV-07204000	ROLLER BEARING	1
26		MAV-072010A0	UPPER ROLLER REGULATOR ASM.	1
27		MAV-07202000	UPPER FEED ECCENTRIC	(1)
28		MAV-07201000	UPPER FEED ROLLER REGULATOR	(1)
29		311-70004	SCREW (M5X0.8-5) 82	(2)
30		311-63603	SCREW (M4X0.7-8) 62	(1)
31		311-74709	SPACER	(1)
32		MAV-07215000	ADJUSTING SCREW	(1)
33		311-80805	OIL WICK	1

REF.NO	NOTE	PART NO.	DESCRIPTION	Qty
1		MAV-07218000	UPPER	
2		311-63801	SCRWE	
3		MAV-07223000	UPPER	
4		311-63603	SCREW	
5		MAV-07224000	UPPER	
6		311-70301	SCREW	
7		MAV-07225000	IRON W	
8		311-66200	SCREW	
9		311-69600	SCREW	
10		311-70004	SCREW	
11		311-75706	RETAIN	
12		MAV-07228000	THRUST	
13		MAV-07226000	CLUTCH	
14		MAV-07227000	CLUTCH	
15		MAV-07222000	CLUTCH	
16		MAV-07221000	CLUTCH	
17		MAV-07219000	ADJUST	
18		311-70004	SCREW	
19		MAV-07220000	ADJUST	
20		311-61607	SCREW	
21		311-60302	SCREW	
22		MAV-07239000	CLUTCH	
23		311-60807	SCREW	
24		MAV-07217000	CLUTCH	
25		311-69105	SCREW	
26		MAV-07216000	CLUTCH	
27		MAV-072290A0	CLUTCH	
28		MAV-07232000	THRUST	
29		MAV-07233000	CLUTCH	
30		311-69907	SCREW	
31		MAV-072340A0	CLUTCH	
32		MAV-07238000	UPPER	
33		311-73602	WASHER	
34		311-61201	SCREW	
35	#01	MAV-07235000	UPPER	
36	#02	MAV-07236000	UPPER	
37	#03	MAV-07237000	UPPER	
38	#03	MAV-07240000	UPPER	
39		CM-3002000-01	ATTENT	

Note #01...STANDARD ( )  
#02...OPTIONAL P  
#03...OPTIONAL P