

JUKI

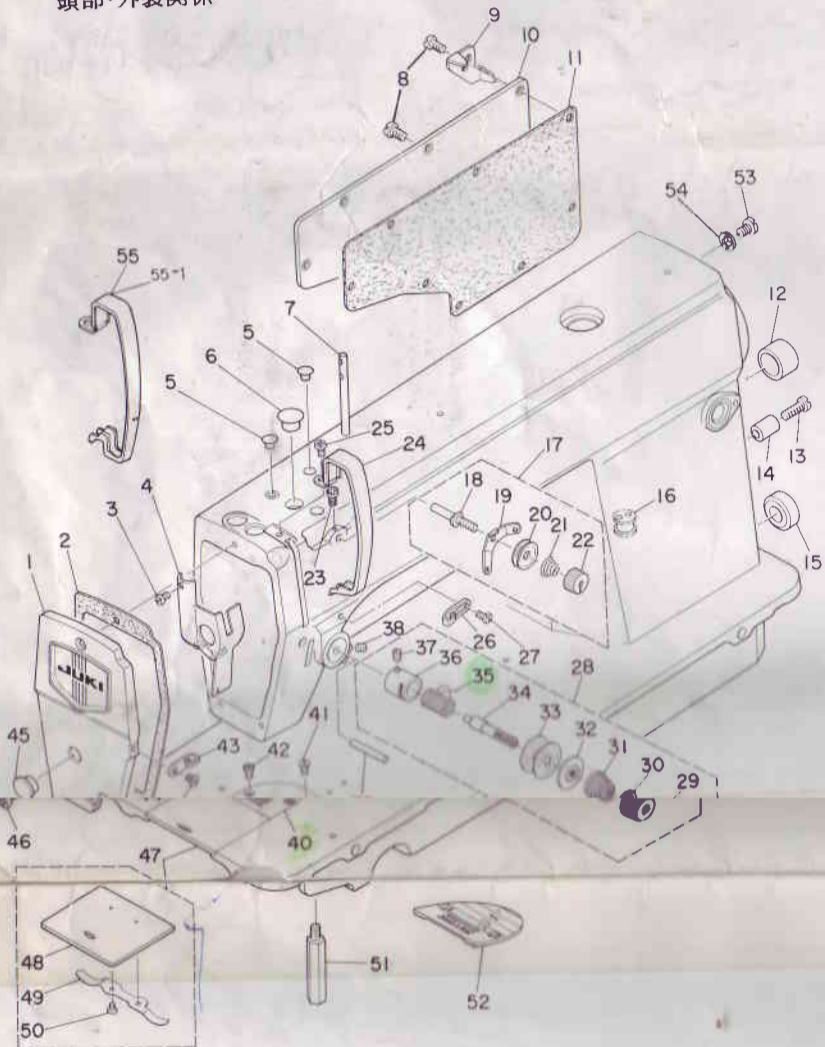
Single Needle Lockstitch Industrial Sewing Machine
Equipped with an Automatic Thread Trimmer
高速一本針本縫自動糸切り装置付マシン

DDL-5550-4 SERIES

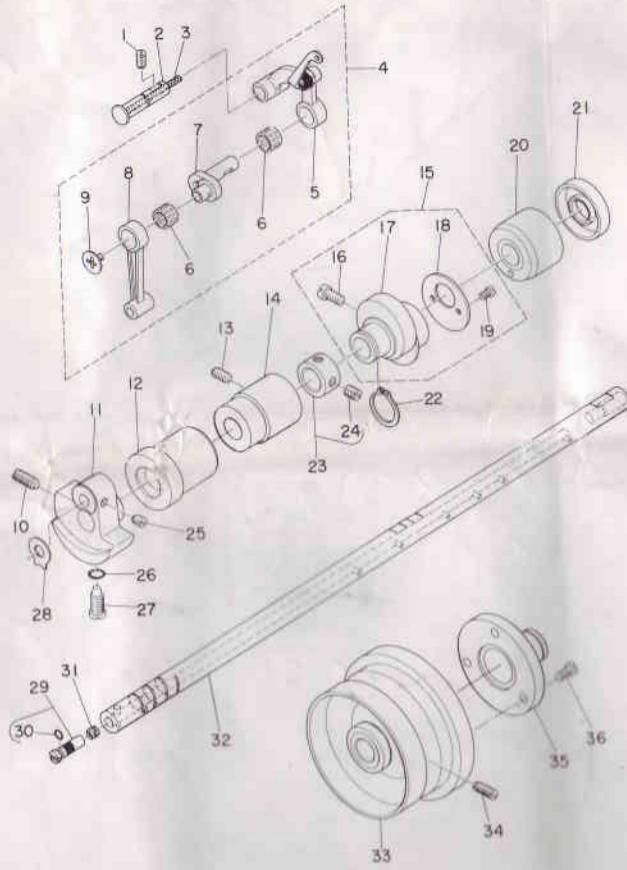
PARTS LIST

BE011900PJB
No.0312-01

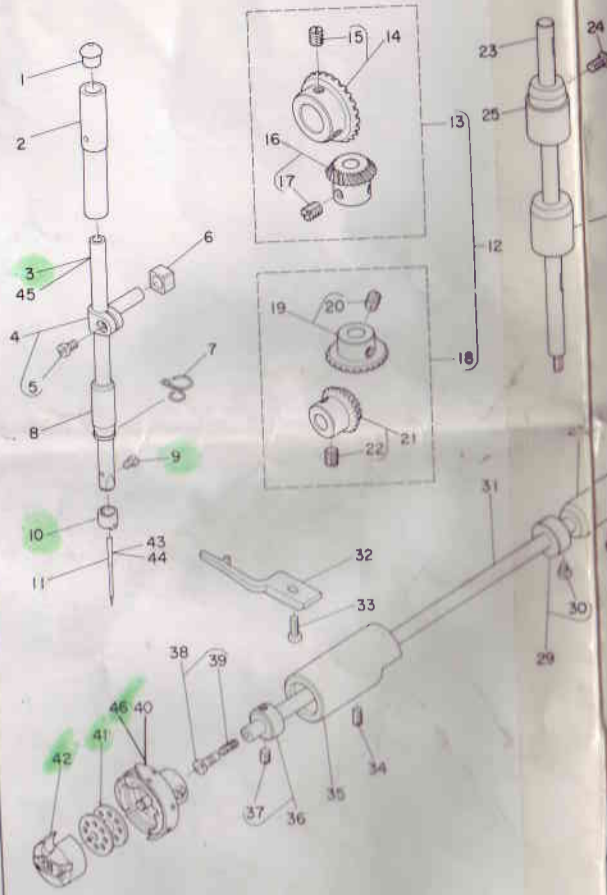
1. MACHINE FRAME & MISCELLANEOUS COVER COMPONENTS 頭部・外装関係



2. MAIN SHAFT COMPONENTS 上軸関係



3. NEEDLE BAR & HOOK DRIVING SHAFT COMPONENTS 針棒・下軸関係



REF. NO.	NOTE	PART NO.	DESCRIPTION	AMT.
1		110-00254	FACE PLATE ASM.	1
2		110-00304	FACE PLATE GASKET	1
3		SS-6080410-SP	SCREW 1/8-44 L=4	1
4		110-00858	ARM OIL SHIELD ASM.	1
5		TA-0850604-RO	RUBBER PLUG	2
6		TA-1250705-RO	RUBBER PLUG	1
7		B1114-012-000	THREAD GUIDE PIN	1
8		SS-4120015-SP	SCREW 12/64-28 L=0	8
9	#01	111-02605	CORD HOLDER	1
10		110-00510	SIDE PLATE	1
11		110-00610	GASKET	1
12		TA-2000502-RO	RUBBER PLUG	1
13		SS-6121840-SP	SCREW 3/16-28 L=18.0	1
14		111-00500	REVERSE FEED LEVER STOPPER	1
15		TA-2101002-RO	RUBBER PLUG	1
16	#02	110-30202	RUBBER BUSHING	1
17		110-45051	THREAD TENSION ASM.	1
18		110-45002	FIRST TENSION POST	(1)
19		110-45200	THREAD TENSION GUIDE	(1)
20		B3214-047-000	BOBBIN WINDER TENSION DISC	(2)
21		110-45101	THREAD TENSION SPRING	(1)
22		110-45309	THREAD TENSION NUT	(1)
23		SS-4120615-SP	SCREW 3/16-28 L=6	1
24		110-00700	THREAD TAKE-UP LEVER COVER	1
25		SS-4120615-SP	SCREW 3/16-28 L=6	1
26		110-18504	ARM THREAD GUIDE A	1
27		110-01500	SCREW	1
28		110-46158	THREAD TENSION ASM.	1
29		110-18900	TENSION NUT	(1)
30		B3120-125-000	TENSION DISC STOPPER	(1)
31		B3129-012-A00	TENSION SPRING	(1)
32		B3132-552-000	TENSION DISC HOLDER	(1)
33		B3126-012-000	TENSION DISC	(2)
34		B3115-552-000	TENSION POST	(1)
35		B3128-012-000	TAKE-UP SPRING	(1)
36		B3111-120-000	TENSION POST SOCKET	(1)
37		SS-8090670-SP	SCREW 9/64-40 L= 5.5	(1)
38		SS-8150710-SP	SCREW 15/64-28 L=7	1
39		B3118-552-E00	THREAD RELEASE PIN	1
40		B1109-012-108	THROAT PLATE (1)	1
41		SS-2110920-TP	SCREW 11/64-40 L=8.5	1
42		SS-2110915-SP	SCREW 11/64-40 L=6.8	1
43		110-18603	ARM THREAD GUIDE B	1
44		SS-6110610-TP	SCREW 11/64-40 L=6	1
45		TA-1250400-RO	RUBBER PLUG	2
46		SS-4120915-SP	SCREW 12/64-28 L=9	3
47		110-01658	BED SLIDE ASM.	1
48		B1110-012-000	SLIDE PLATE	(1)
49		110-01609	BRED SLIDE SPRING	(1)
50		SS-6060210-SP	SCREW 3/32-56 L= 1.9	(2)
51		110-01104	BED SCREW STUD	4
52	#03	B1109-552-000	THROAT PLATE	1
53	#04	SS-4120615-SP	SCREW 3/16-28 L=6	1
54		WT-0530002-KS	TOOTHED WASHER	1
55	#04	111-41603	THREAD TAKE-UP LEVER COVER D.10/87 1	1
55-1	#04	111-41801	THREAD TAKE-UP LEVER COVER A.10/87 1	1

Note(注記) #01.....For DDL-5550-4-0B,W0,WB
#02.....For DDL-5550-4,5550-4-W0
#03.....For JA
#04.....For JE

REF. NO.	NOTE	PART NO.	DESCRIPTION	AMT.
1		SS-8151150-SP	SCREW 15/64-28 L=10.5	1
2		110-17209	THREAD TAKE-UP CRANK SHAFT	1
3		CQ-3500000-F0	OIL FELT	0.1
4		110-39070	THREAD TAKE-UP LEVER ASM.	1
5		110-39062	THREAD TAKE-UP LEVER ASM.	(1)
6	#01	B1905-541-B00	NEEDLE BEARING, B	(2)
7		110-05204	NEEDLE BAR CRANK	(1)
8		B1408-552-000	NEEDLE BAR CRANK ROD	(1)
9		B1903-552-000	END SCREW LEFT	(1)
10		SS-8881650-TP	SCREW 9/32-28 L=16	1
11		110-02102	COUNTERWEIGHT	1
12		110-02201	MAIN SHAFT BUSHING, FRONT	1
13		SS-8150912-TH	SCREW	1
14		110-02300	BUSHING, INTERMEDIATE	1
15		110-08059	FEED DRIVE ECCENTRIC CAM ASM.	1
16		SS-6681110-SP	SCREW 1/4-40 L=11	(2)
17		110-08000	FEED DRIVE ECCENTRIC CAM	(1)
18		110-08109	THRUST COLLAR	(1)
19		SS-6090670-TP	SCREW 9/64-40 L=6	(2)
20		110-02805	MAIN SHAFT BUSHING, REAR	1
21		110-02508	OIL SEAL	1
22		RC-1850001-KP	SNAP RING 18.5	1
23		CS-147121A-SH	THRUST COLLAR ASM. D=14.72 W=12	(1)
24		SS-8660610-TP	SCREW 1/4-40 L=6	(2)
25		SS-8660610-TP	SCREW 1/4-40 L=6	2
26		RO-04-2401-00	RUBBER RING	1
27		SS-768-650-TP	SCREW 9/32-28 L=16	1
28		B1212-552-A00	COUNTERWEIGHT PROTECTING PLATE	1
29		B1213-552-0A0-A	OIL AMOUNT ADJUSTING PIN ASM.	1
30		RO-0291801-00	RUBBER RING	(1)
31		B1226-552-000	ROLLER FELT	1
32		110-02003	MAIN SHAFT	1
33		111-30101	HAND WHEEL	1
34		SS-7681650-TP	SCREW 9/32-28 L=16	2
35		D1230-552-B00	FLANGE	1
36		SS-4111015-SP	SCREW 11/64-40 L=10	3

Note(注記) #01.....Selecting part (A-D)

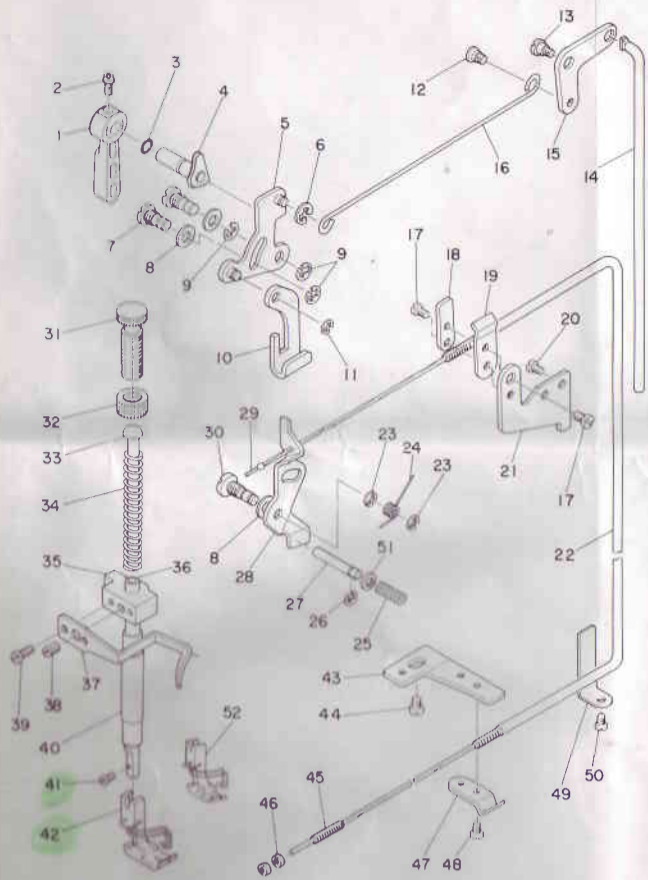
REF. NO.	NOTE	PART NO.	DESCRIPTION
1		B1405-012-000	CAP
2		B1402-552-000-A	NEEDLE BAR BUSHING, UPPER
3		110-35003	NEEDLE BAR
4		B1411-552-0A0	NEEDLE BAR CONNECTION ASM.
5		SS-6090670-TP	SCREW 9/64-40 L=6
6		B1414-555-000	SLIDE BLOCK
7		110-18801	NEEDLE BAR THREAD GUIDE
8		B1403-115-000	NEEDLE BAR BUSHING (LOWER)
9		SS-7080510-TP	SCREW 1/8-44 L=4.5
10		110-35300	NEEDLE BAR THREAD GUIDE
11		MDB-100B1400	NEEDLE DBX1 #14
12		B1306-155-0C0	GEAR & PINION ASM.
13		B1306-155-0B0	GEAR & PINION ASM., UPPER
14		B1305-012-0A0	GEAR ASM.
15		SS-8660810-TP	SCREW 1/4-40 L=8
16		B1306-155-0A0	PINION ASM.
17		SS-8660810-TP	SCREW 1/4-40 L=8
18		B1307-155-0B0	GEAR & PINION ASM., LOWER
19		B1307-155-0A0	GEAR ASM. LARGE
20		SS-8660810-TP	SCREW 1/4-40 L=8
21		B1308-155-0A0	PINION ASM.
22		SS-8660810-TP	SCREW 1/4-40 L=8
23		110-04009	UPRIGHT SHAFT
24		SS-4120915-SP	SCREW 12/64-28 L=9
25		110-04108	BUSHING, UPPER
26		110-04207	UPRIGHT SHAFT BUSHING, LOWER
27		110-15203	BUSHING, REAR
28		SS-4120915-SP	SCREW 12/64-28 L=9
29		CS-079101A-SH	THRUST COLLAR ASM. D=7.94 W=10
30		SS-6110420-TP	SCREW 11/64-40 L=4.8
31		110-15005	HOOK DRIVING SHAFT
32		110-38809	BOBBIN CASE HOLDER
33		SS-6111010-SP	SCREW 11/64-40 L= 9.5
34		SS-8150432-TH	SCREW
35		110-15104	BUSHING ASM. FRONT
36		CS-079073A-SH	THRUST COLLAR
37		SS-8110410-TP	SCREW 11/64-40 L= 3.5
38		B1808-552-0A0	OIL SEAL SCREW ASM.
39		B1810-552-000	OIL WICK
40		111-41355	LUBRICATING BOBBIN ASM.
41		B9117-012-000	BOBBIN
42		110-38759	BOBBIN CASE ASM.
43	#01	MC-2005007-50	NEEDLE 134 75
44	#02	MDP-500B1400	NEEDLE DPX5 #14
45	#03	111-41207	NEEDLE BAR
46	#04	110-38850	LUBRICATING BOBBIN ASM.

Note(注記) #01.....For JE
#02.....For JO
#03.....For JE,JO
#04.....For JH

110-35003 NIBAR for 16x231
111-41207 NIBAR for 134R

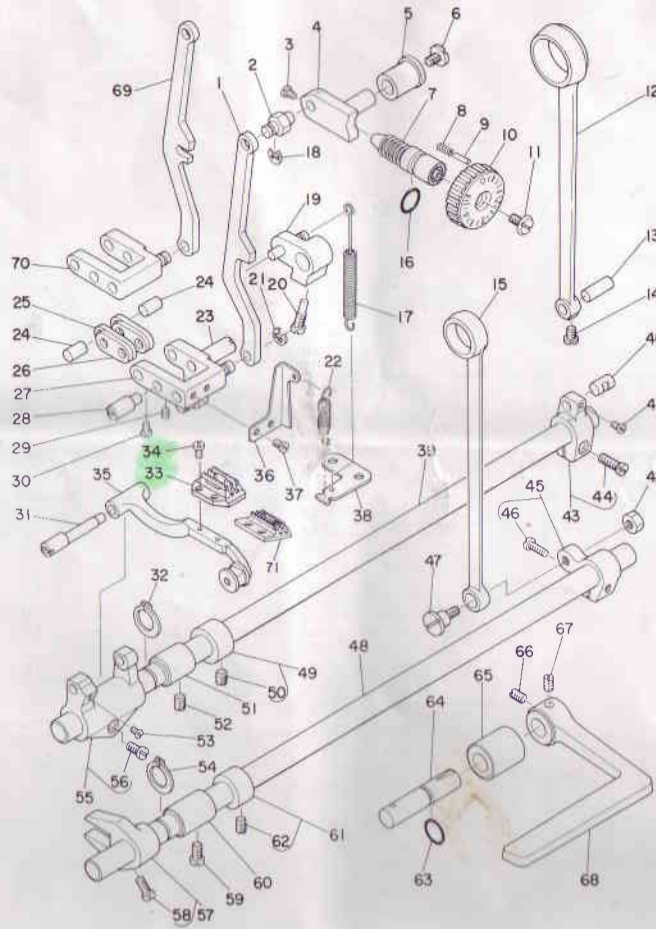
4. HAND LIFTER COMPONENTS

押え上げ関係



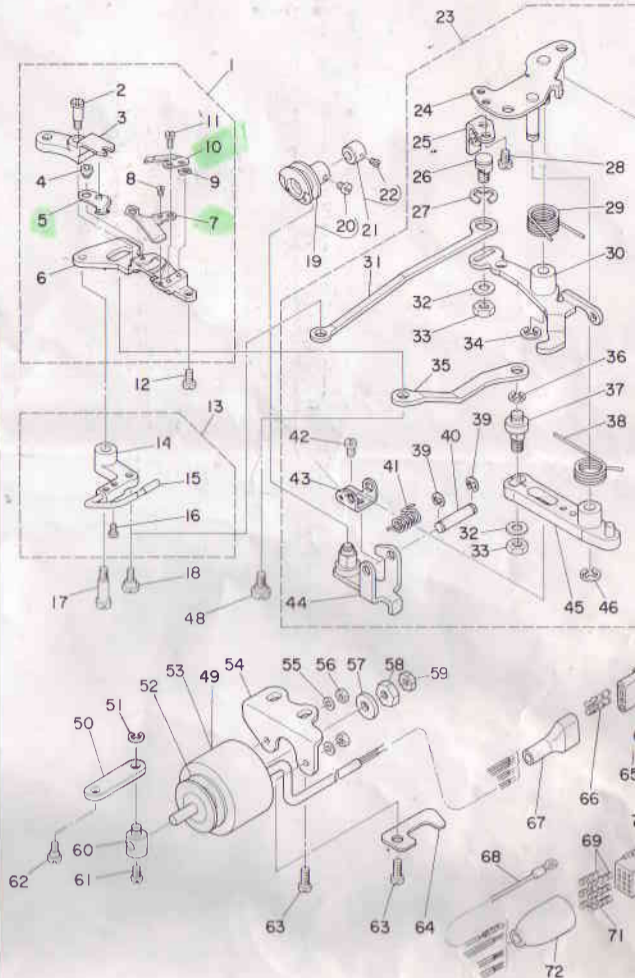
5. FEED MECHANISM COMPONENTS

送り関係



6. THREAD TRIMMER COMPONENTS

糸切り装置関係



REF. NO.	NOTE	PART NO.	DESCRIPTION	AMT.
1		B1520-552-000-A	HAND LIFTER	1
2		B1521-555-000	SCREW	1
3		RD-0371801-00	RUBBER RING	1
4		110-08758	HAND LIFTER CAM ASM.	1
5		110-08350	HAND LIFTER LINK	1
6		RE-0500000-KO	SNAP RING 5	1
7		110-08509	LINK SHAFT	2
8		110-08608	GASKET	3
9		RE-0500000-KO	SNAP RING 5	3
10		110-08202	LIFTING LEVER	1
11		110-07309	LIFTING LEVER RING	1
12		110-07101	HINGE SCREW	1
13		SD-0720332-SP	HINGE SCREW D= 7.24 H= 3.3	1
14		110-07200	CONNECTING ROD VERTICAL	1
15		110-07002	LIFTING LEVER LINK	1
16		110-08905	LIFTING LEVER CONNECTING ROD	1
17		SS-7110740-TP	SCREW 11/64-40 L=7	2
18		110-45507	WIRE HOLDER B	1
19		110-45408	WIRE HOLDER A	1
20		SS-4120615-SP	SCREW 3/16-28 L=6	1
21		110-45606	WIRE HOLDER BRACKET (UPPER)	1
22		110-45804	WIRE TUBE	1
23		RE-0500000-KO	SNAP RING 5	2
24		110-18207	TENSION RELEASE RETURN SPRING	1
25		110-18405	TENSION RELEASE PIN SPRING	1
26		RE-0400000-KO	SNAP RING 4	1
27		110-18306	TENSION RELEASE SUPPORTING PIN	1
28		110-18009	TENSION RELEASE PLATE	1
29		110-45903	WIRE CABLE	1
30		110-18108	TENSION RELEASE SHAFT	1
31		B1509-555-000	PRESSER SPRING REGULATOR	1
32		B1511-555-000	NUT 1/2-28	1
33		B1510-227-000	PRESSER GUIDE BAR	1
34		B1505-227-000-A	PRESSER SPRING	1
35		110-06004	NEEDLE BAR GUIDE BRACKET	1
36		B1501-127-000	PRESSER BAR	1
37		110-08103	PRESSER BAR THREAD GUIDE	1
38		SS-8660810-TP	SCREW 1/4-40 L=8	1
39		SS-7090910-SP	SCREW 9/64-40 L= 8.5	2
40		B1502-541-000	PRESSER BAR BUSHING, LOWER	1
41		SS-7091110-SP	SCREW 9/64-40 L=10.5	1
42		B1524-012-0BA	PRESSER FOOT ASM.	1
43		110-45705	WIRE HOLDER BRACKET (LOWER)	1
44	#01	SS-4150915-SP	SCREW 15/64-28 L=9	1
45		D3159-555-B00	SET SCREW	1
46		NS-6820310-SP	NUT 3/16-32	2
47		110-45408	WIRE HOLDER A	1
48		SS-7110410-SP	SCREW 11/64-40 L=4	1
49		110-46000	WIRE CABLE HOLDER	1
50		SS-4120615-SP	SCREW 3/16-28 L=6	1
51		110-19007	WASHER PLATE	1
52	#02	B1524-552-0BA	PRESSER FOOT ASM.	1

Note(注記) #01.....For DDL-5550-4,5550-4-W0
#02.....For JA

REF. NO.	NOTE	PART NO.	DESCRIPTION	AMT.
1	#01	111-00401	FEED ADJUST ROD	1
2		110-09802	FEED REGULATOR PIN	1
3		SS-6090670-TP	SCRFV 9/64-40 L=6	2
4		110-09801	FEED REGULATOR BUSHING	1
5		110-09800	FEED REGULATOR BUSHING	1
6		SS-7120770-SH	SCREW	1
7		110-09909	FEED REGULATOR SCREW	1
8		B1148-555-000	SPRING	1
9		110-52701	PIN	1
10		110-37009	FEED DIAL	1
11		SS-6120930-TP	SCREW 3/16-28 L=9.0	1
12		110-08208	ROCKER SHAFT CONNECTING ROD	1
13		110-09206	WALKING FOOT PIN C	1
14		SS-6090620-SP	SCREW 9/64-40 L=6	1
15		110-14008	CONNECTING ROD	1
16		RD-0922702-00	RUBBER RING	1
17		110-10303	FEED REVERSE SPRING	1
18		RE-0500000-KO	SNAP RING 5	1
19		110-10154	FEED REVERSE ARM ASM.	1
20		110-10402	FEED REVERSE ARM SCREW	1
21		RE-0500000-KO	SNAP RING 5	1
22		110-09404	ADJUSTING LINK SPRING	1
23		110-08901	ADJUSTING LINK FULCRUM SHAFT B	1
24		110-09008	WALKING FOOT PIN A	2
25		110-08703	WALKING FOOT LINK	2
26		110-08604	CONNECTING LINK A	1
27	#01	111-00252	FEED ADJUST LINK ASM.	1
28		110-08802	ADJUSTING LINK FULCRUM SHAFT A	1
29		SS-8150710-SP	SCREW 15/64-28 L=7	2
30		SS-6090620-SP	SCREW 9/64-40 L=6	2
31		110-37207	FEED BAR SHAFT	1
32		RC-1381001-KP	RETAINING RING	1
33		B1613-012-100	FEED DOG I	1
34		SS-4080620-TP	SCREW 1/8-44 L=6	2
35		110-37355	FEED BAR ASM.	1
36		110-09305	ADJUSTING LINK SPRING GUIDE	1
37		SS-7110510-SP	SCREW 11/64-40 L=5	2
38		110-11301	FEED SPRING HOOK	1
39		110-10808	FEED ROCKER SHAFT	1
40		110-09107	WALKING FOOT PIN B	1
41		SS-6090620-SP	SCREW 9/64-40 L=6	1
42		NS-6680410-SP	NUT 9/32-28	1
43		110-08356	FEED ROCKER SHAFT CRANK ASM.	1
44		SS-7121410-SP	SCREW 3/16-28 L=14	(1)
45		110-14156	REAR CRANK ASM.	1
46		SS-8121210-SP	SCREW 3/16-28 L=12	(1)
47		SD-1000801-SH	HINGE SCREW	1
48		110-14206	FEED DRIVING SHAFT	1
49		CS-147121A-SH	THRUST COLLAR ASM. D=14.72 W=12	1
50		SS-8660810-TP	SCREW 1/4-40 L=6	(2)
51		110-10907	FEED ROCKER SHAFT BUSHING	1
52		SS-8150432-TH	SCREW	1
53		SS-7110740-TP	SCREW 11/64-40 L=7	1
54		RC-1381001-KP	RETAINING RING	1
55		110-37157	FEED BAR CRANK ASM.	1
56		SS-7121410-SP	SCREW 3/16-28 L=14	(1)
57		110-14354	DRIVING SHAFT CRANK ASM..FRONT	1
58		SS-7111120-SP	SCREW 11/64-40 L=10.5	(1)
59		SS-4120915-SP	SCREW 12/64-28 L=9	1
60		110-10907	FEED ROCKER SHAFT BUSHING	1
61		CS-147121A-SH	THRUST COLLAR ASM. D=14.72 W=12	1
62		SS-8660810-TP	SCREW 1/4-40 L=6	(2)
63		RD-0781901-00	RUBBER RING	1
64		110-10501	FEED REVERSE SHAFT	1
65		110-10709	FEED LEVER METAL	1
66		SS-8660810-TP	SCREW 1/4-40 L=8	1
67		SS-8661040-TP	SCREW 1/4-40 L=10	1
68		110-10600	REVERSE FEED CONTROL LEVER	1
69	#02	110-09503	FEED REGULATOR CONNECTING ROD	1
70	#02	110-08455	WALKING FOOT ADJUSTING LINK	1
71	#03	B1613-552-000	FEED DOG	1

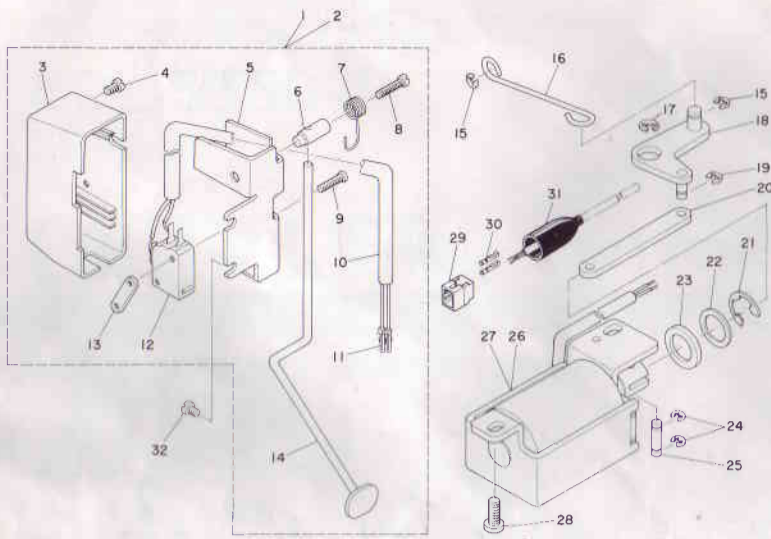
Note(注記) #01.....For DDL-5550-4-0B,5550-4-WB
#02.....For DDL-5550-4,5550-4-W0
#03.....For JA

REF. NO.	NOTE	PART NO.	DESCRIPTION	AMT.
1		110-40359	KNIFE UNIT	1
2		SD-0460702-TP	HINGE SCREW D=4.6 H=7	3
3		110-40508	FORKED BASE FOR KNIFE	1
4		110-40359	MOVING KNIFE HINGE SCREW	1
5		110-40052	MOVING KNIFE ASM.	1
6		110-40300	KNIFE MOUNTING BASE	1
7		110-40201	THREAD GUIDE FOR KNIFE	1
8		SS-2060210-SP	SCREW 3/32-56 L=2.3	1
9		D2404-555-B00	COUNTER KNIFE	1
10		D2404-555-DOH	COUNTER KNIFE	1
11		SS-4080620-TP	SCREW 1/8-44 L=6	1
12		SS-4110715-SP	SCREW 11/64-40 L=7	1
13		110-42553	PICKER ARM ASM.	1
14		110-42504	PICKER ARM	1
15		110-42652	THREAD TAKE-UP PICKER ASM.	1
16		SS-6090510-SP	SCREW 9/64-40 L=5	1
17		SD-0641451-SP	HINGE SCREW D= 6.35 H=14.5	1
18		SD-0630275-SP	HINGE SCREW D= 6.35 H= 2.7	1
19		110-42850	THREAD TRIMMER CAM ASM.	1
20		SS-6660810-TP	SCREW 1/4-40 L=6	1
21		110-42959	CAM COLLAR ASM.	1
22		SS-8110520-TP	SCREW 11/64-40 L= 4.5	1
23		110-42264	THREAD TRIMMER DRIVING UNIT	1
24		110-42058	BASE PLATE ASM.	1
25		110-42751	DRIVING ARM STOPPER ASM.	1
26		110-42306	PICKER LINK PIN	1
27		RE-0800000-KO	SNAP RING 8	1
28		SS-4110715-SP	SCREW 11/64-40 L=7	1
29		110-41704	CLUTCH SPRING	1
30		110-41852	CLUTCH PLATE ASM.	1
31		110-42405	PICKER LINK	1
32		WP-0621016-SH	WASHER	1
33		NS-6150430-SP	NUT 15/64-28	1
34		RE-0600000-KO	SNAP RING 6	1
35		110-40607	MOVING KNIFE LINK	1
36		RE-0500000-KO	SNAP RING 5	1
37		110-40706	MOVING KNIFE LINK PIN	1
38		110-43700	KNIFE RETURN SPRING, B	1
39		RE-0400000-KO	SNAP RING 4	1
40		110-41407	ROLLER FULCRUM SHAFT	1
41		110-41506	ROLLER RETURN SPRING	1
42		SS-7090810-SP	SCREW 9/64-40 L=6	1
43		110-41308	ROLLER ARM BRACKET	1
44		110-40953	ROLLER ARM ASM.	1
45		110-40854	KNIFE DRIVING ARM ASM.	1
46		RE-0600000-KO	SNAP RING 6	1
47		SS-4150915-SP	SCREW 15/64-28 L=9	1
48		SD-0640702-TH	HINGE SCREW	1
49		111-30309	THREAD TRIMMER SOLENOID	1
50		110-42207	CLUTCH LINK	1
51		RE-0500000-KO	SNAP RING 5	1
52		110-43205	SOLENOID RUBBER A	1
53	#01	110-43106	THREAD TRIMMER SOLENOID	1
54		110-43403	SOLENOID BASE	1
55		WP-0450000-SD	WASHER 4.5X8X0.5	1
56		NW-6040000-SN	NUT M4	1
57		110-43304	SOLENOID RUBBER B	1
58		NS-6660410-SH	NUT	1
59		NS-6660430-SP	NUT 1/4-40	1
60		110-43007	SOLENOID PIN	1
61		SS-6110710-TP	SCREW 11/64-40 L= 6.5	1
62		SD-0600361-SP	HINGE SCREW	1
63		SS-4151215-SP	SCREW	1
64		110-21706	TUBE HOLDER (LOWER)	1
65		MAI-1504300A	4-POLE RECEPTACLE, WHITE	1
66		D6042-555-B00	PIN-SHAPE TERMINAL, FEMALE	1
67		D6009-555-DOA	4-POLE NYLON PLUG COVER	1
68	#01	110-43551	GROUND WIRE ASM.	1
69	#02	D6043-555-B00	PIN TERMINAL, MALE	1
70	#01	M9640-110-000	12-POLE PLUG	1
71	#03	D6043-555-B00	PIN TERMINAL, MALE	1
72	#01	M9637-110-000	12-POLE PLUG COVER	1

Note(注記) #01.....For JE
#02.....For DDL-5550-4,5550-4-W0(JE)
#03.....For DDL-5550-4-0B,5550-4-WB(JE)

7. AUTOMATIC REVERSE FEED COMPONENTS

自動逆送り関係

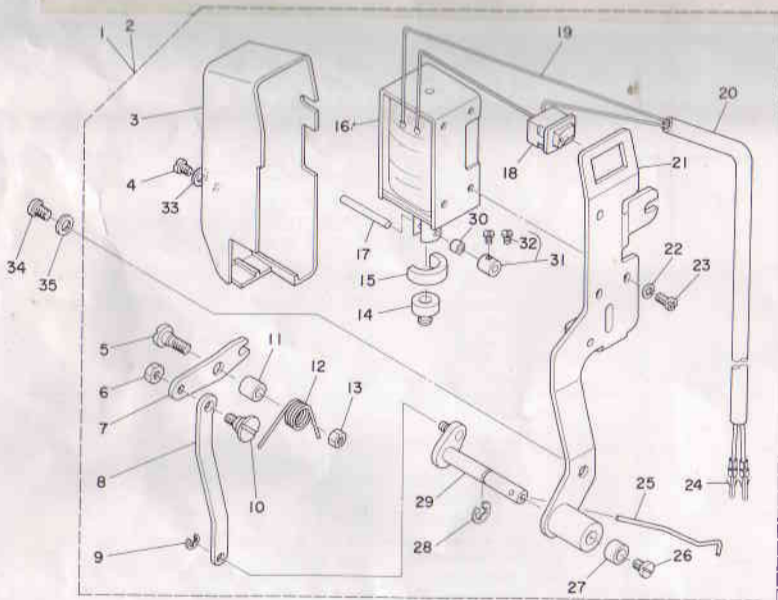


REF. NO.	NOTE	PART NO.	DESCRIPTION	AMT.
1	#01	111-30556	REVERSE FEED SWITCH ASM.	1
2	#02	111-02050	REVERSE FEED SWITCH ASM.	1
3		111-02506	REVERSE FEED SWITCH LEVER	(1)
4		SS-4110815-SP	SCREW 11/64-40 L=6	(1)
5		111-02001	REVERSE FEED SWITCH BASE	(1)
6		111-02100	REVERSE FEED SWITCH SHAFT	(1)
7		111-02209	REVERSE FEED SWITCH SPRING	(1)
8		SS-4111815-SP	SCREW	(2)
9		SM-4031501-SC	SCREW	(2)
10		HV-5000700-00	2-CORE CABTYRE CORD	(1.5)
11		D6043-555-R00	PIN TERMINAL, MALE	(2)
12		HA-0017000-00	REVERSE FEED SWITCH	(1)
13		111-02308	REVERSE FEED SWITCH PLATE	(1)
14		111-02407	REVERSE FEED SWITCH LEVER	(1)
15		RE-0500000-KO	SNAP RING 5	2
16		111-01300	REVERSE FEED CONNECTING SHAFT	1
17		RE-0900000-KO	SNAP RING 9.0	1
18		111-01151	CONNECTING ARM ASM.	1
19		RE-0400000-KO	SNAP RING 4	1
20		111-01409	REVERSE FEED CONNECTING LINK	1
21		RE-1200000-KO	SNAP RING 12	1
22		WP-1802616-SZ	WASHER 18X24X2.6	1
23		D2468-555-R00	RUBBER PLUNGER	1
24		RE-0400000-KO	SNAP RING 4	2
25		111-01003	PLUNGER ARM PIN	1
26	#01	111-00757	REVERSE FEED MAGNET ASM.	1
27	#02	111-30457	REVERSE FEED MAGNET ASM.	1
28		SS-4151215-SP	SCREW	2
29	#03	D6029-555-R0A	NYLON PLUG 6P	1
30	#01	D6042-555-R00	PIN-SHAPE TERMINAL, FEMALE	2
31	#03	D6001-555-R00	PLUG COVER	1
32		SS-4120915-SP	SCREW 12/64-28 L=9	2

Note (注記) #01.....For DDL-5550-4-08,5550-4-VB
#02.....For DDL-5550-4-08,5550-4-VB (JE)
#03.....For DDL-5550-4-08,5550-4-VB

8. WIPER COMPONENTS

ワイパー関係

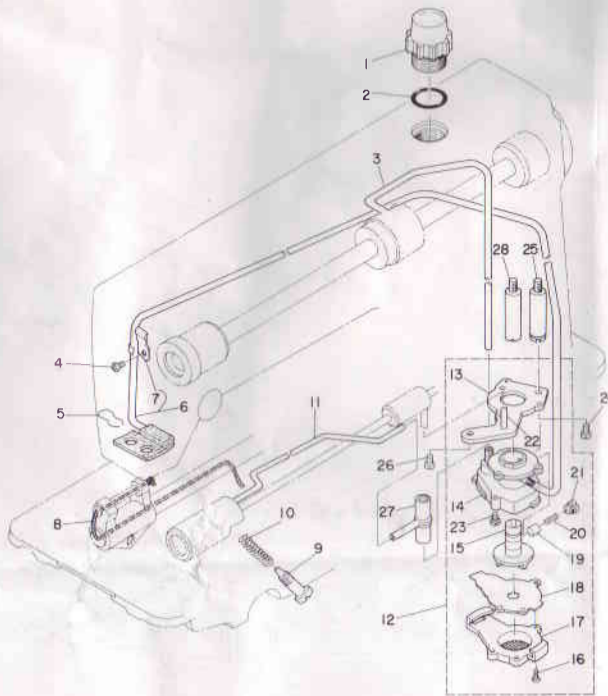


REF. NO.	NOTE	PART NO.	DESCRIPTION	AMT.
1	#01	111-30655	WIPER SOLENOID ASM.	1
2	#02	111-10053	WIPER SOLENOID ASM.	1
3		111-11408	WIPER COVER	(1)
4		SM-4030601-SN	SCREW M3X0.5 L=6	(1)
5		SD-0650321-TP	HINGE SCREW	(1)
6		NS-6090310-SP	NUT 9/64-40	(1)
7		111-10608	WIPER LINK A	(1)
8		111-10905	CONNECTING LINK	(1)
9		RE-0250000-KO	SNAP RING 2.5	(1)
10		111-11507	WIPER LINK B, HINGE SCREW	(1)
11		111-10707	WIPER HINGE SCREW COLLAR	(1)
12		111-10806	WIPER SPRING	(1)
13		NS-6110310-SP	NUT 11/64-40	(1)
14		111-10400	WIPER RUBBER A	(1)
15		111-10500	WIPER RUBBER B	(1)
16		111-10301	WIPER SOLENOID	(1)
17		111-11705	WIPER SOLENOID PIN	(2)
18		HA-0005900-00	POWER SOURCE SWITCH ASM.	(1)
19		HW-2003900-00	ELECTRIC WIRE	(0.1)
20		HW-5000700-00	2-CORE CABTYRE CORD	(1.5)
21		111-10152	WIPER BASE ASM.	(1)
22		VS-0310002-KN	SPRING WASHER 3.1X5.0X0.7	(3)
23		SM-4030601-SN	SCREW M3X0.5 L=6	(3)
24		D6043-555-R00	PIN TERMINAL, MALE	(2)
25		111-11806	WIPER	(1)
26		SS-6090540-SP	SCREW 9/64-40 L=5.0	(1)
27		111-11309	BRACKET INSTALLING COLLAR	(1)
28		RE-0500000-KO	SNAP RING 5	(1)
29		111-11051	WIPER DRIVING SHAFT ASM.	(1)
30		111-11804	WIPER LINK COLLAR	(2)
31		CS-030071A-SP	THRUST COLLAR ASM.	(1)
32		SS-6080310-SP	SCREW 1/8-44 L=2.5	(2)
33		WP-0320501-SC	WASHER 3.2X7X0.5	(1)
34		SS-4120915-SP	SCREW 12/64-28 L=9	1
35	#03	WP-0482086-SD	WASHER 4.8X11.5X2.0	1

Note (注記) #01.....For DDL-5550-4-W0,5550-4-WB
#02.....For DDL-5550-4-W0,5550-4-WB (JE)
#03.....For DDL-5550-4-W0

9. OIL LUBRICATION COMPONENTS

給油関係

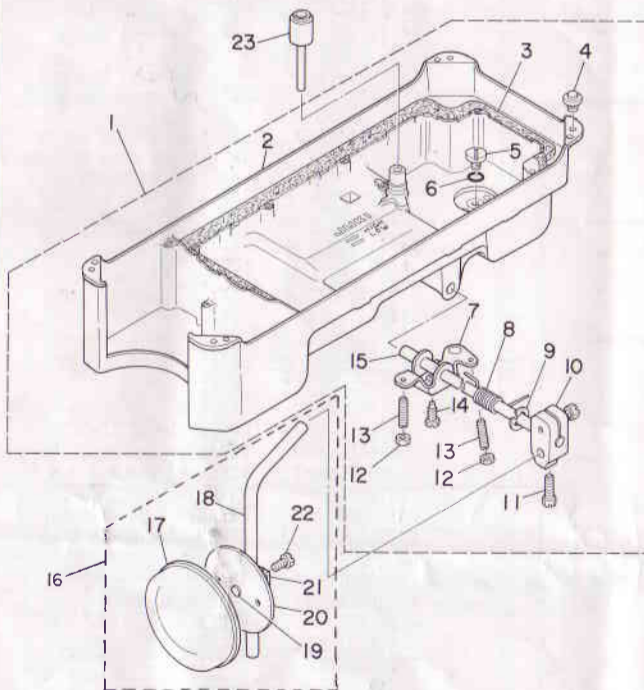


REF. NO.	NOTE	PART NO.	DESCRIPTION	AMT.
1		110-46505	OIL SIGHT WINDOW	1
2		RO-1952401-00	RUBBER RING	1
3		110-21201	MAIN SHAFT OIL TUBE	1
4		SS-4120815-SP	SCREW 3/16-28 L=6	1
5		B3529-226-000	OIL FELT PRESSER	1
6		110-21151	OIL RETURN TUBE ASM.	1
7		110-21805	OIL RETURN TUBE HOLDER	(1)
8		CO-2520000-00	OIL WICK	0.3
9		B3514-412-000	OIL ADJUSTING SCREW	1
10		B2616-372-000	SPRING	1
11		110-21300	OIL TUBE	1
12		110-20054	LUBRICATING OIL PUMP ASM.	1
13		110-20302	OIL PUMP INSTALLING BASE	(1)
14		110-20005	OIL PUMP	(1)
15		110-20708	OIL PUMP IMPELLER	(1)
16		SE-4301041-SR	SCREW	(3)
17		110-20203	LUBRICATING OIL PUMP COVER	(1)
18		110-20807	OIL PUMP IMPELLER COVER	(1)
19		110-20401	PLUNGER	(1)
20		110-20609	PLUNGER SPRING	(1)
21		110-20500	PLUNGER SCREW	(1)
22		110-20906	HOOK DRIVING SHAFT OIL TUBE	(1)
23		SL-4030851-SP	SCREW	(3)
24		SS-6111010-SF	SCREW 11/64-40 L= 9.5	1
25	#01	110-00609	OIL PUMP SUPPORT	1
26		SS-4150915-SP	SCREW 11/64-40 L=6	1
27		110-21409	RUBBER JOINT	1
28	#02	110-21063	OIL PUMP SUPPORT	1

Note (注記) #01.....For DDL-5550-4-08,5550-4-VB
#02.....For DDL-5550-4,5550-4-V0

10. OIL RESERVOIR COMPONENTS

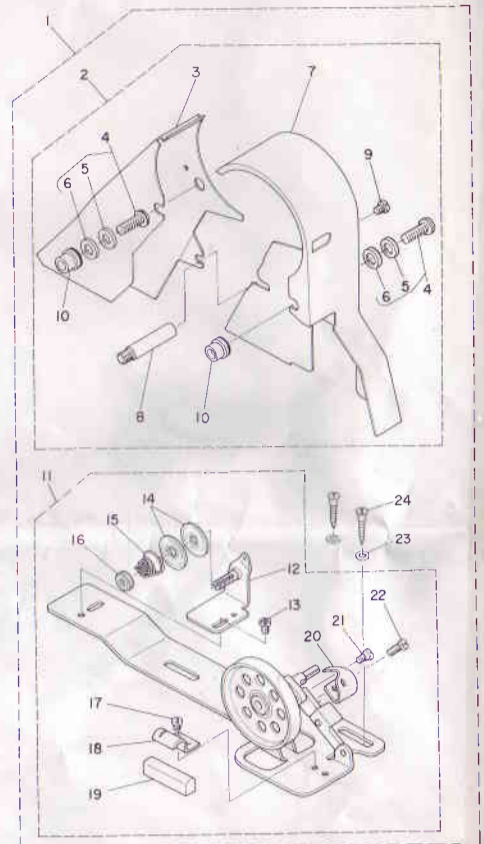
油溜関係



REF. NO.	NOTE	PART NO.	DESCRIPTION	AMT.
1		110-47057	OIL RESERVOIR ASM.	1
2		110-23009	OIL RESERVOIR	(1)
3		110-23108	GASKET	(1)
4		110-47107	RUBBER CUSHION	(4)
5		SS-6700710-SH	SCREW	(1)
6		RO-0982401-00	RUBBER RING	(1)
7		110-24007	CONNECTING ROD, VERTICAL	(1)
8		110-24100	SPRING	(1)
9		RE-1000000-KO	SNAP RING 10.0	(1)
10		110-24502	KNEE PRESS LOD BEARING BRACKET	(1)
11		SS-9182010-SN	SCREW 9/32-20 L=20	(2)
12		NS-6150430-SR	NUT 15/64-28	(2)
13		SS-8153010-SR	SCREW 15/64-28 L=30	(2)
14		SS-9151610-SR	SCREW 15/64-28 L=16	(1)
15		110-24205	KNEE PRESS ROD	(1)
16		110-23751	KNEE PRESS PLATE ASM.	1
17		B3421-552-000-A	KNEE PRESS PLATE COVER	(1)
18		B3419-122-000	KNEE LIFTER PLATE ROD	(1)
19		110-24403	RUBBER	(1)
20		110-23702	KNEE PRESS PLATE	(1)
21		110-23801	KNEE PRESS PLATE HOLDER	(1)
22		SS-9151540-SR	SCREW 15/64-28 L=15	(1)
23		110-24304	KNEE PRESS LIFTER ROD	1

11. BELT COVER & BOBBIN WINDER COMPONENTS

ベルトカバー・糸巻関係

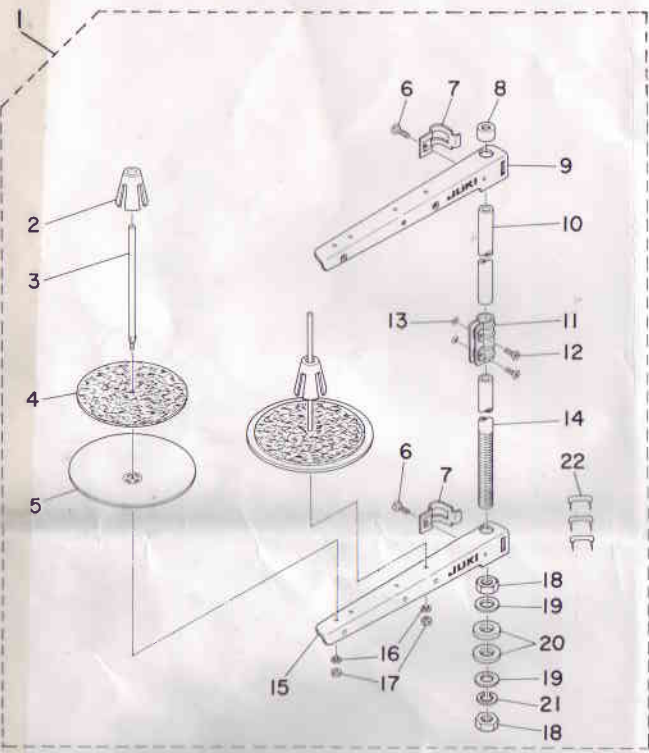


REF. NO.	NOTE	PART NO.	DESCRIPTION	AMT.
1		110-23363	BELT COVER ASM.	1
2		110-23355	BELT COVER ASM.	1
3		110-23306	BELT COVER A	1
4		110-47354	BELT COVER SET SCREW ASM.	1
5		WP-0820526-SD	WASHER 8.2X14X0.5	1
6		110-47305	BELT COVER RUBBER CUSHION	1
7		110-23405	BELT COVER B	1
8		110-23504	BELT COVER SUPPORT	1
9		SS-7120640-SP	SCREW 3/16-28 L=6	1
10		110-47255	BELT COVER COLLAR ASM.	1
11		D3201-555-DA0	BOBBIN WINDER ASM.	1
12		D3213-555-DA0	THREAD TENSION BRACKET ASM.	1
13		SS-4110515-SP	SCREW 11/64-40 L=5	1
14		B3126-012-000	TENSION DISC	1
15		B3129-012-800	TENSION SPRING B	1
16		B3125-012-000	THREAD TENSION STUD NUT	1
17		SS-7110250-SP	SCREW 11/64-40 L=3	1
18		B3212-555-000	PRESSER PLATE	1
19		B3211-555-000	RUBBER BRAKE	1
20		B3200-555-000	POSITIONING FINGER	1
21		SD-0490261-SP	HINGE SCREW D=4.9 H=2.6	1
22		SS-7081310-SP	SCREW 1/8-44 L=12.5	1
23		WP-0501016-SD	WASHER 5X10.5X1	1
24		SK-3482500-SC	WOOD SCREW D=4.8 L=25	1

Note (注記) #01.....For JE

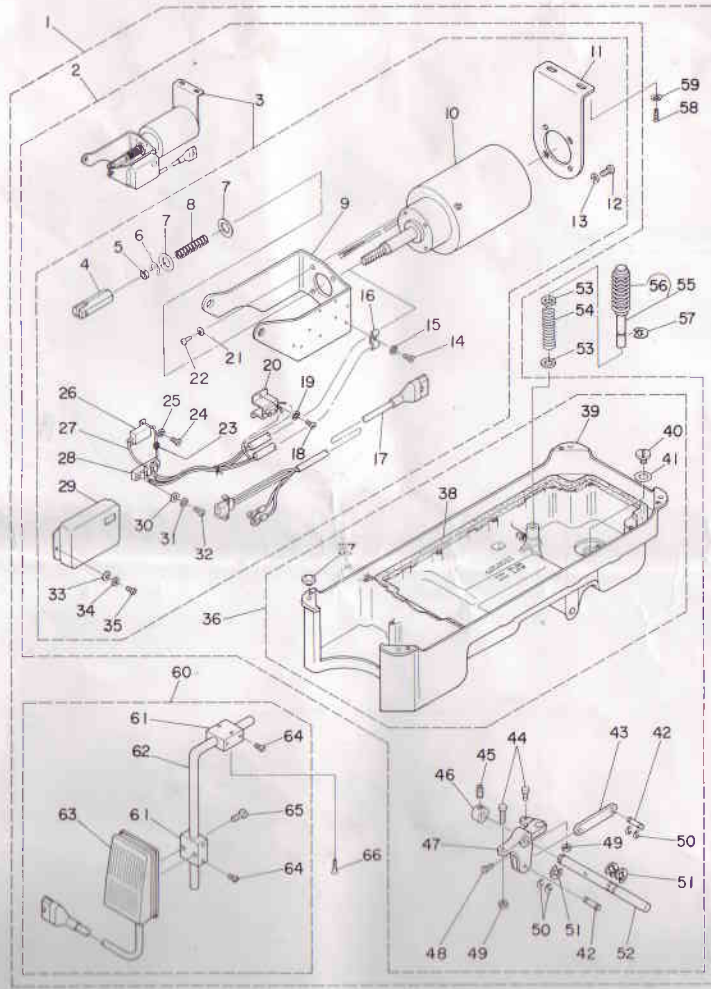
12. THREAD STAND COMPONENTS

糸立装置関係



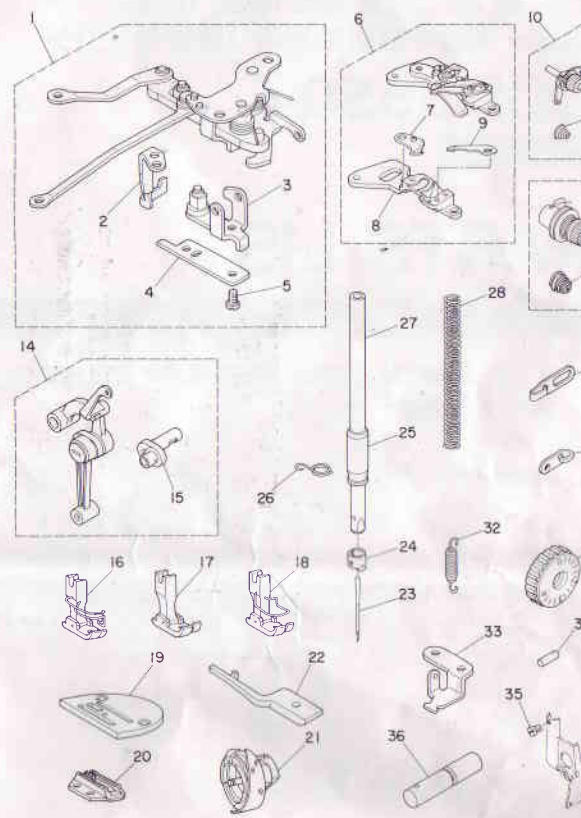
13. AK-30 (PRESSER LIFTING SOLENOID COMPONENTS)

AK-30 (自動押え上げ装置関係)



14. EXCLUSIVE PARTS FOR DDL-5550H-4

DDL-5550H-4 専用部品



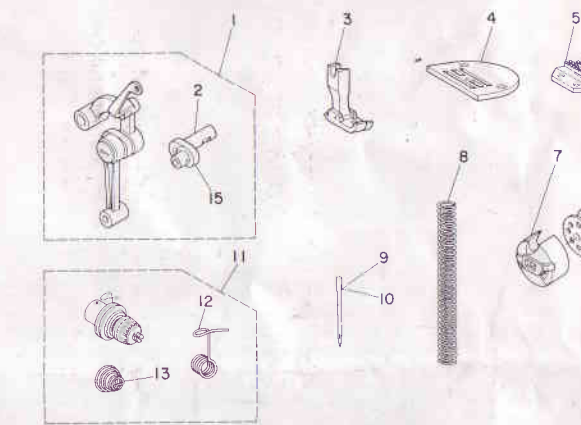
REF.NO. NOTE PART NO. DESCRIPTION

REF.NO.	NOTE	PART NO.	DESCRIPTION
1		110-93366	THREAD TRIMMER DRIVING ASM.
2		110-93556	DRIVING ARM STOPPER ASM.
3		110-93358	ROLLER ARM ASM.
4		110-93408	ROLLER ARM HOLDER
5		SS-7110840-SP	SCREW 11/64-40 L=7.8
6		110-93168	KNIFE MOUNTING BASE ASM.
7		110-93259	MOVING KNIFE ASM.
8		110-93101	KNIFE MOUNTING BASE
9		D2407-415-D00	THREAD GUIDE, LOWER
10		110-93655	THREAD TENSION ASM.
11		110-93606	THREAD TENSION SPRING
12		110-93754	THREAD TENSION ASM.
13		B3114-232-000	TENSION SPRING, NO.2
14		110-91659	LINK THREAD TAKE-UP LEVER ASM.
15		110-91600	NEEDLE BAR CRANK H
16	#01	B1511-543-0A0	PRESSER FOOT ASM.
17	#02	B1511-543-BA0	PRESSER FOOT ASM.
18		B1511-543-BB0	PRESSER FOOT ASM.
19		B1109-555-H0B	THROAT PLATE (H)
20		B1613-555-H00	FEED DOG (H)
21		D1830-415-BAH	SEWING HOOK ASM.
22		110-93804	POSITIONING FINGER H
23		MDA-10082200	NEEDLE DAXI #22
24		110-91501	NEEDLE BAR THROAT GUIDE H
25		110-91402	NEEDLE BAR LOWER BUSHING
26		B1410-553-000	NEEDLE BAR THROAT GUIDE
27		110-91303	NEEDLE BAR
28		110-91705	AKK THREAD GUIDE (H)
29		110-91006	ARM THREAD GUIDE (HA)
30		110-10006	FEED DIAL
31		110-91204	ADJUST LINK SPRING
32		110-91907	FEED SPRING HOOK
33		B1808-550-000	OIL WICK
34		SS-6080320-SP	SCREW 1/8-44 L=2.5
35		110-93903	FEED LEVER SHAFT
36			

Note (注記) #01.....For export
#02.....For domestic

15. EXCLUSIVE PARTS FOR DDL-5550A-4

DDL-5550A-4 専用部品



REF.NO. NOTE PART NO. DESCRIPTION

REF.NO.	NOTE	PART NO.	DESCRIPTION
1		110-91857	LINK THREAD TAKE-UP LEVER ASM.
2		110-91808	NEEDLE BAR CRANK A
3		D1524-555-DA0	PRESSER FOOT ASM.
4		D1109-555-D01	THROAT PLATE I D=1.6
5		B1613-012-100	FEED DOG I
6		B9117-552-A00	BOBBIN
7		B1837-012-0A0	BOBBIN CASE ASM.
8		B1505-227-T00-A	PRESSER SPRING T
9		MDA-10081100	NEEDLE DAXI #11
10		MDA-10080900	NEEDLE DAXI #9
11		110-92053	THREAD TENSION ASM.
12		D3128-555-D00	TAKE-UP SPRING
13		D3129-555-D00	THREAD TENSION SPRING

REF.NO. NOTE PART NO. DESCRIPTION AMT.

REF.NO.	NOTE	PART NO.	DESCRIPTION	AMT.
1		GAK-300060D0	PRESSER LIFTING SOLENOID ASM.	1
2		GAK-300060B0	OIL RESERVOIR ASM.	(1)
3		GAK-300070B0	PRESSER LIFTING SOLENOID ASM.	(1)
4		GAK-01019000	KNUCLE	(1)
5		NM-6100663-SE	NUT M10	(1)
6		RE-1200000-K0	SNAP RING 12	(1)
7		GAK-01018000	THRUST WASHER	(2)
8		GAK-30013000	SPRING	(1)
9		GAK-30012000	SOLENOID INSTALLING BRACKET B	(1)
10		GAK-300070A0	PRESSER LIFTING SOLENOID ASM.	(1)
11		GAK-30011000	SOLENOID INSTALLING BRACKET A	(1)
12		SM-4030801-SB	SCREW M5X0.8 L=14	(2)
13		WS-0511302-KB	SPRING WASHER M5	(4)
14		SM-4030801-SB	SCREW M3 L=8	(1)
15		WS-0310702-KS	SPRING WASHER	(1)
17		GAK-020210A0	PRESSER LIFTING CORD ASM.	(1)
18		SM-4030801-SB	SCREW M3 L=8	(2)
19		WS-0310702-KS	SPRING WASHER	(2)
20		GAK-01014000	2POLE RECEPTACLE INSTALLING BASE	(1)
21		WS-0511302-KB	SPRING WASHER M5	(4)
22		SM-4051001-SB	SCREW M5X0.8 L=10	(4)
23		HG-2674014-7P	DIODE IN5625	(1)
24		SM-4030801-SB	SCREW M3 L=8	(2)
25		WS-0310702-KS	SPRING WASHER	(2)
26		HR-0036010-00	RESISTOR 10 OHM 20W	(1)
27		HW-2F18S12-12	STRANDED WIRE, RED	(0.1)
28		GAK-01015000	2POLE TERMINAL BLOCK	(1)
29		GAK-30018000	COVER	(1)
30		WP-0330501-SB	WASHER M3	(2)
31		WS-0310702-KS	SPRING WASHER	(2)
32		SM-4031401-SB	SCREW M3 L=14	(2)
33		WP-0330500-MB	WASHER 3.3X6X0.5	(2)
34		WS-0310702-KS	SPRING WASHER	(2)
35		SM-4030801-SB	SCREW M3 L=8	(2)
36		GAK-300060A0	OIL RESERVOIR ASM.	(1)
37		110-47107	RUBBER CUSHION	(4)
38		110-23108	GASKET	(1)
39		GAK-30006000	OIL RESERVOIR	(1)
40		SS-8700710-SH	SCREW	(1)
41		RO-0982401-00	RUBBER RING	(1)
42		MAO-12002000	PEDAL SWITCH FRAME STUD	(2)
43		GAK-01004000	LEVER CONNECTING ROD	(1)
44		GAK-01003B00	PRESSER LIFTER STOPPER B	(2)
45		SS-8660530-TP	SCREW 1/4-40 L=4.5	(2)
46		CS-1111019-SH	THRUST COLLAR D=11.11 W=10	(1)
47		GAK-30015000	PRESSER LIFTING LEVER	(1)
48		SS-7151210-SP	SCREW 15/64-28 L=12	(1)
49		NM-6060003-SC	NUT M6	(2)
50		RE-0320000-K0	SNAP RING 3.2	(4)
51		RE-1000000-K0	SNAP RING 10.0	(3)
52		GAK-30014000	PRESSER LIFTING SHAFT	(1)
53		WP-0621016-SD	WASHER 6.2X13X1	(2)
54		GAK-30005000	SPRING	(1)
55		GAK-300010B0	KNEE PRESS LIFTER ROD ASM.	(1)
56		GAK-30004000	KNEE PRESS LIFTER ROD	(1)
57		RE-0400000-K0	SNAP RING 4	(1)
58		SK-3514000-SC	WOOD SCREW D=5.1 L=40	(2)
59		WP-0570716-SE	WASHER	(2)
60		GAK-010220B0	LIFTER KNEE SWITCH ASM. B	(1)
61		MAT-80230T00	KNEE SWITCH SUPPORT BASE	(2)
62		MAT-80231T00	DRIVING BAR, T002	(1)
63		GAK-010220A0	KNEE SWITCH ASM.	(1)
64		SS-6151220-SP	SCREW 15/64-28 L=11.5	(4)
65		SS-7111410-SP	SCREW 11/64-40 L=14	(2)
66		SK-3514000-SC	WOOD SCREW D=5.1 L=40	(2)

JUKI CORPORATION

HEAD OFFICE
2-1, 8-CHOME, KOKURYO-CHO,
CHOFU-CITY, TOKYO 182, JAPAN

BUSINESS OFFICE
23-3, KABUKI-CHO 1-CHOME,
SHINJUKU-KU, TOKYO 160, JAPAN

CABLE: JUKI TOKYO
TELEX: J22967, 232-2301
PHONE: 03(3205)1188, 1189, 1190