

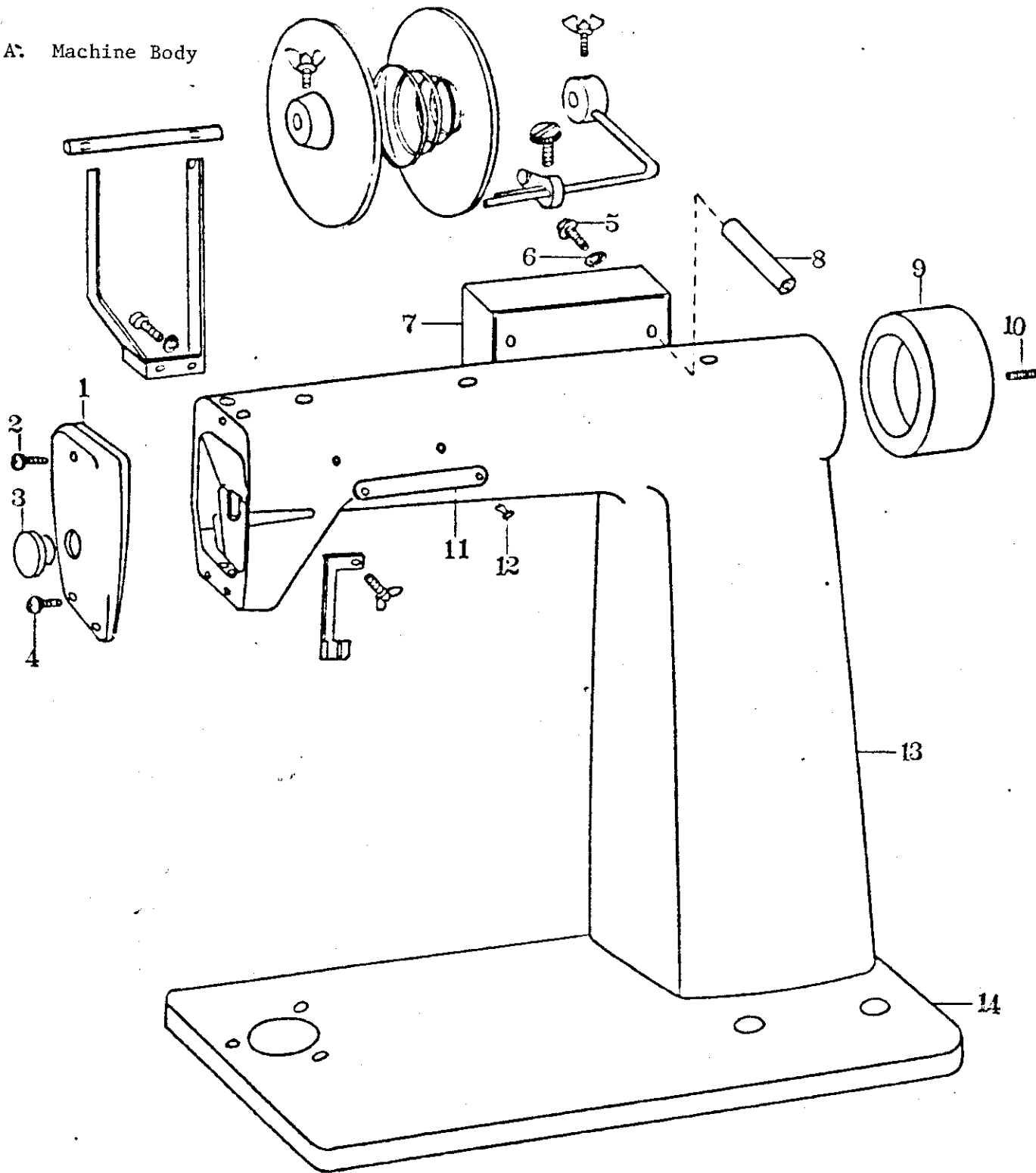
BROTHER ULTRASONIC SEALING MACHINE

BU6-111

Table of Contents

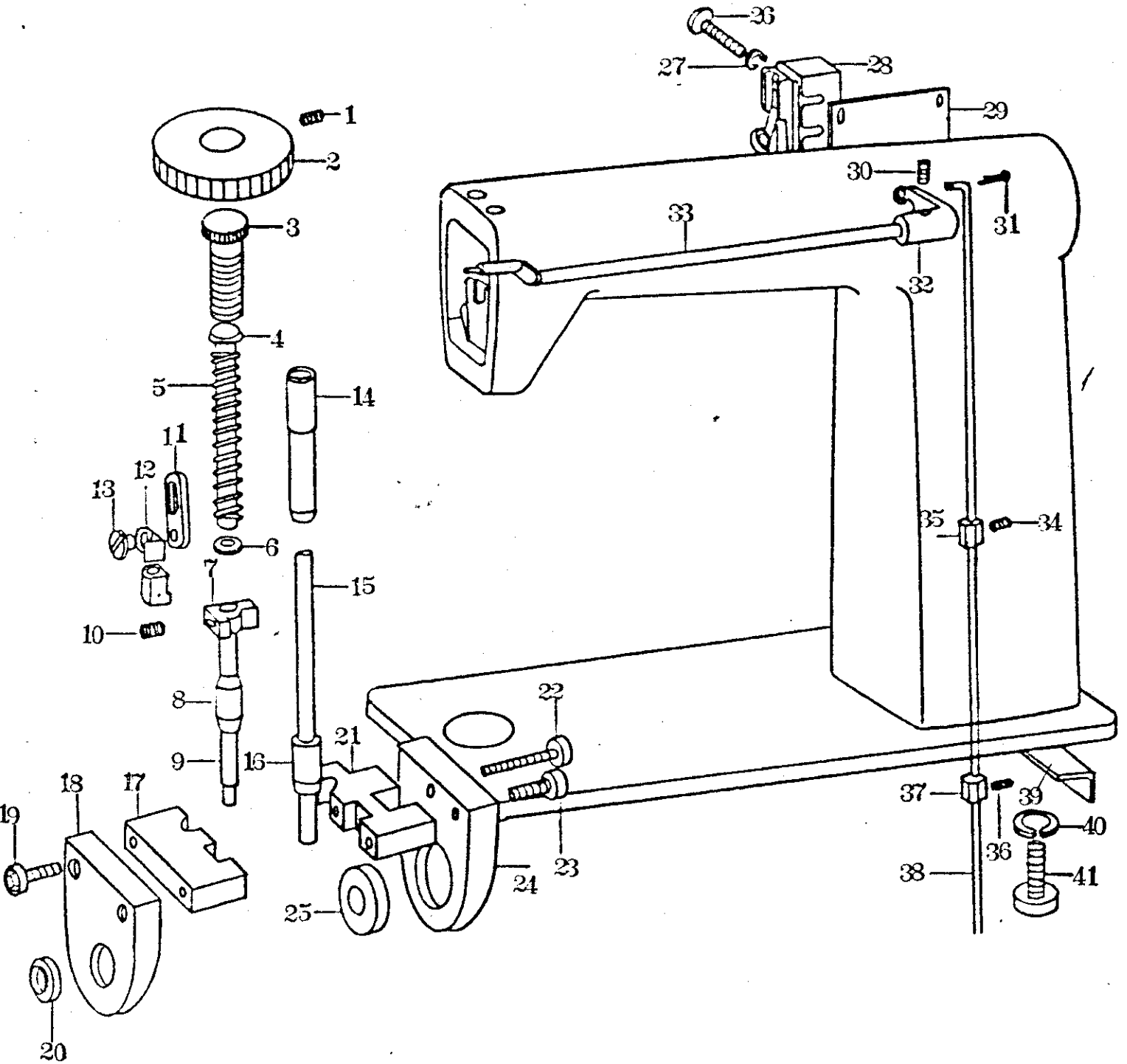
A. Machine Body	1
B. Presser and Switch	2, 3
C. Driving	4
D. Transducer	5
E. Electric Parts	6
F. Leg and Treadboard	7
G. Generator (The Front Part)	8
H. Generator (The Back Part)	9
I. Accessory	10
J. Transformer	11

A: Machine Body



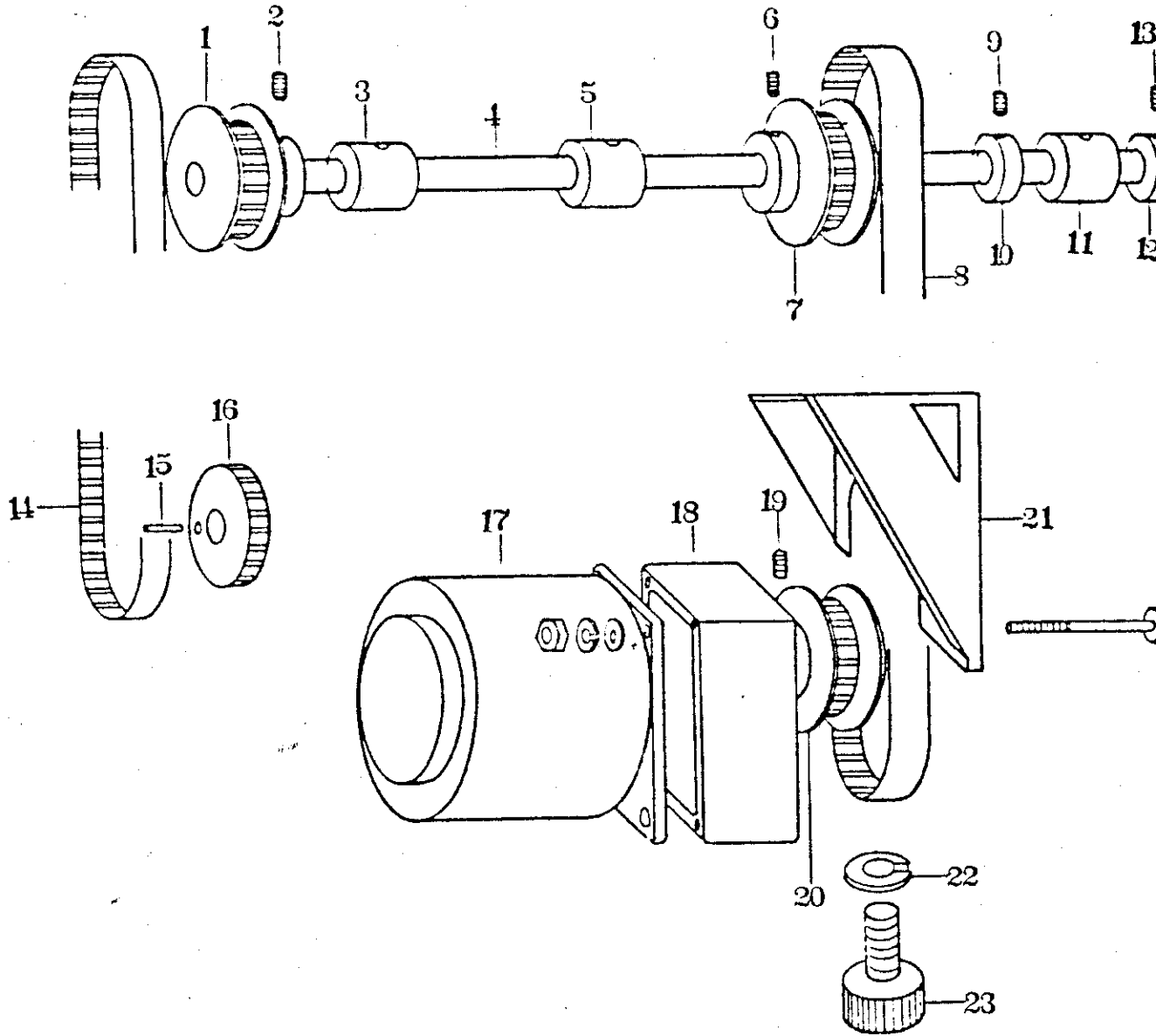
Ref. No.	Name of Parts	Qty	Parts No.	Ref. No.	Name of Parts	Qty	Parts-No.
A-1	Face Plate Assy.	1	181357001	A-9	Head Cover	1	338703000
A-2	Screw	1	002401603	A-10	Screw	2	002503503
A-3	Cap for Face Plate	1	112782001	A-11	Label #1	1	338593000
A-4	Screw	2	002400803	A-12	Screw	2	200084002
A-5	Screw	2	002400803	A-13	BU6 Arm	1	338858000
A-6	Spring Washer	2	028040243	A-14	BU6 Bed	1	338792000
A-7	Switch Cover	1	338758000				
A-8	Collar	2	338776000				

B. Presser and Switch



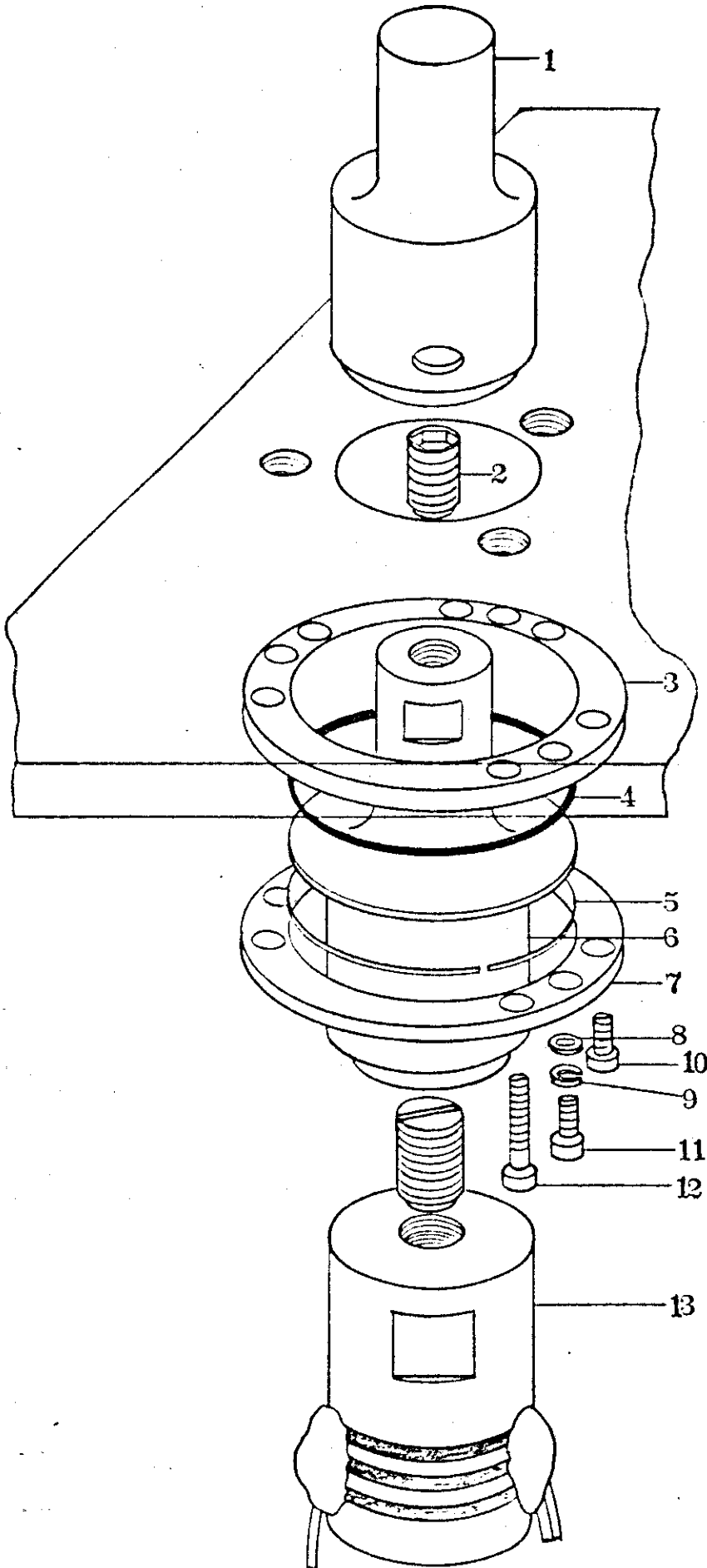
Ref. No.	Name of Parts	Qty	Parts No.	Ref. No.	Name of Parts	Qty	Parts No.
B-1	Screw	1	012060622	B-23	Socket Cap Screw	1	018401222
B-2	Presser Adjusting Knob	1	338488000	B-24	Holder #2	1	338828000
B-3	Presser Adjusting Screw	1	141207001	B-25	Ball Bearing	1	394463100
B-4	Guide for Presser Spring	1	141208001	B-26	Screw	2	002402203
B-5	Presser Spring	1	338778000	B-27	Spring Washer	2	028040243
B-6	Washer	1	398200269	B-28	Switch 15GM22B	1	398291100
B-7	Presser Bar Clamp	1	180102001	B-29	Switch Fixture	1	338759000
B-8	Presser Bar Bushing	1	111467001	B-30	Set Screw	2	012060622
B-9	Presser Bar	1	111466001	B-31	Split Pin	1	045161503
B-10	Screw	1	012060622	B-32	Switch Presser Plate	1	338762000
B-11	Lifting Plate	1	109144001	B-33	Knee Lifter Crank Shaft	1	109145001
B-12	Presser Bar Lifter Bracket	1	100290001	B-34	Set Screw	2	012060622
B-13	Stepped Screw	1	100294001	B-35	Adjusting Fixture	1	338761000
B-14	Needle Bar Bushing	1	111463001	B-36	Set Screw	2	012060622
B-15	Needle Bar	1	111462001	B-37	Adjusting Fixture	1	338761000
B-16	Needle Bar Bushing D	1	111464001	B-38	Treadboard Coupling Shaft	1	338760000
B-17	BU1-03 Block #1	1	338694000	B-39	BU1-03 Fitting Plate	1	338729000
B-18	Holder #1	1	338827000	B-40	Spring Washer	2	028100243
B-19	Socket Cap Screw	2	018401622	B-41	Socket Cap Screw	2	018104022
B-20	Bearing SM08DU3	1	394741100				
B-21	BU1-03 Block #2	1	338695000				
B-22	Socket Cap Screw	1	018403222				

C. Driving



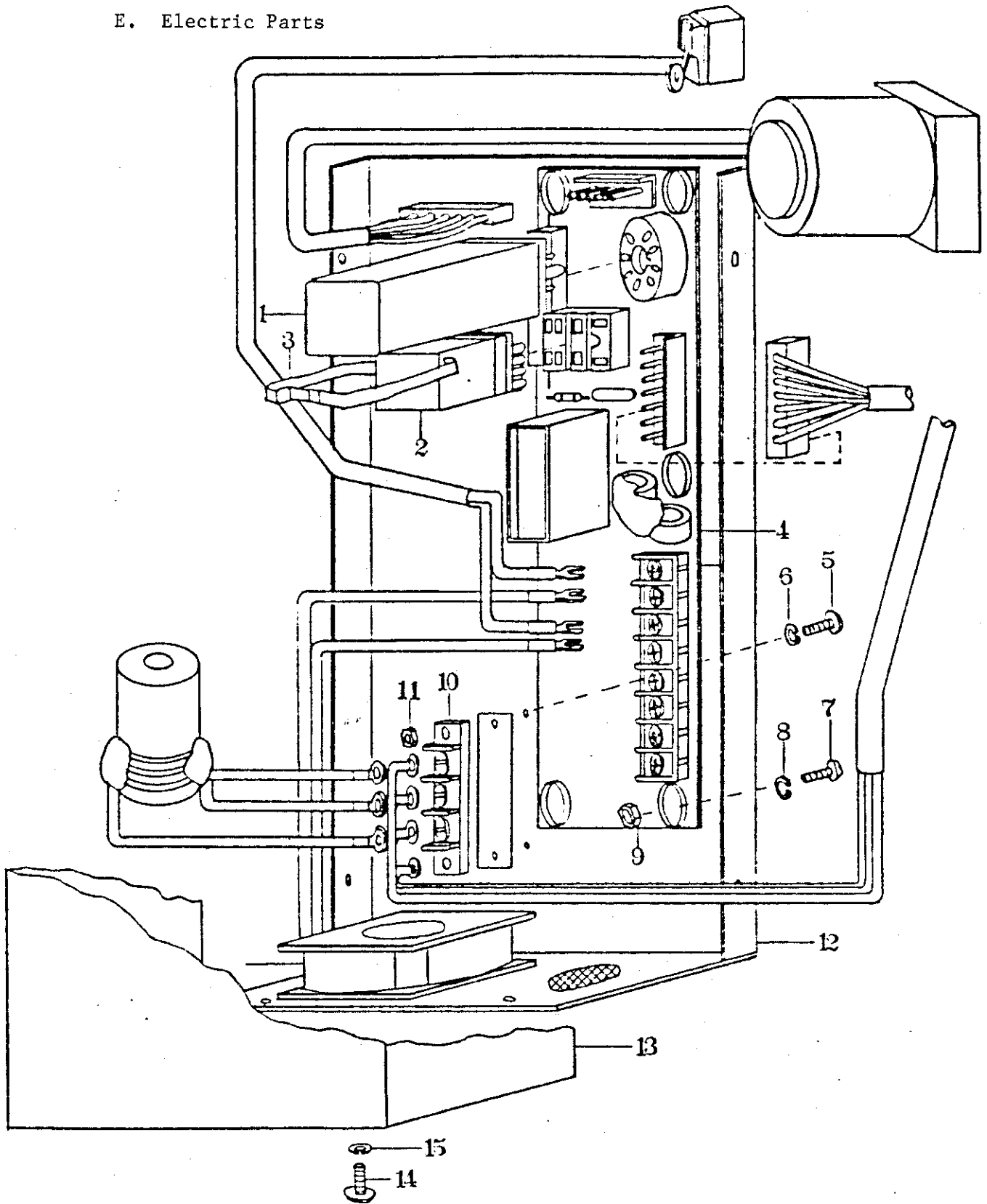
Ref. No.	Name of Parts	Qty	Parts No.	Ref. No.	Name of Parts	Qty	Parts No.
C-1	Pulley #3	1	338753000	C-13	Set Screw	2	012060622
C-2	Set Screw	2	012060622	C-14	Timing Belt 9	1	395171100
C-3	Upper Shaft Bushing L	1	111459001	C-15	Spring Pin	1	047301247
C-4	Upper Shaft	1	109137001	C-16	Pulley #1	1	338751000
C-5	Upper Shaft Bushing M	1	140726000	C-17	Motor	1	394469100
C-6	Set Screw	2	012060622	C-18	Gear Head	1	395062100
C-7	Pulley #4	1	338775000	C-19	Set Screw	2	012060622
C-8	Timing Belt 12	1	395207100	C-20	Pulley #2	1	338752000
C-9	Set Screw	2	012060622	C-21	Motor Fixture	1	338699000
C-10	BU1-03 Stop Ring	1	338734000	C-22	Spring Washer	1	028140243
C-11	Upper Shaft Bushing R	1	146331001	C-23	Socket Cap Screw	1	018144022
C-12	BU1-03 Stop Ring	1	338734000				

D. Transducer



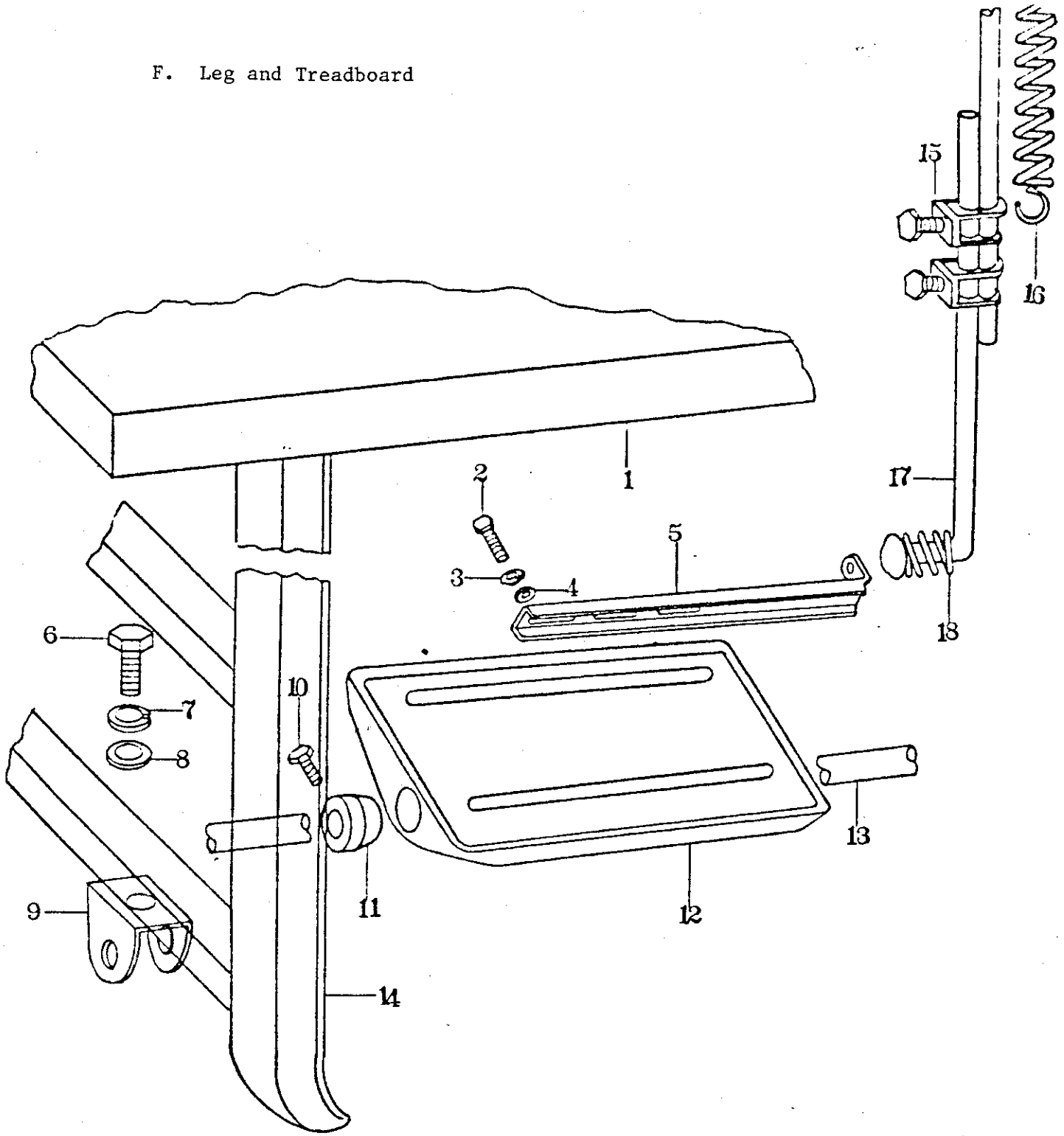
Ref. No.	Name of Parts	Qty	Parts No.
D-1	Horn	1	338750000
D-2	Set Screw	1	012122822
D-3	Flange #1	1	338767000
D-4	O-Ring	1	081065790
D-5	Wire Ring	1	338826000
D-6	Booster	1	391204007
D-7	Flange #2	1	338768000
D-8	Washer	3	398200269
D-9	Spring Washer	3	028060243
D-10	Socket Cap Screw	3	018083522
D-11	Socket Cap Screw	3	018062022
D-12	Socket Cap Screw	3	390031100
D-13	Transducer	1	338034000

E. Electric Parts



Ref. No.	Name of Parts	Qty	Parts No.	Ref. No.	Name of Parts	Qty	Parts No.
E-1	Motor Speed Controller	1	398339100	E-9	Nut	6	021400303
E-2	Relay	1	398593100	E-10	3P Terminal Block	1	398773000
E-3	Relay Fixture	1	398597100	E-11	Nut	2	021400303
E-4	Printed Board Assy.	1	377037000	E-12	BU6 Cover #1	1	338803000
E-5	Screw	2	002401603	E-13	BU6 Cover #2	1	338804000
E-6	Spring Washer	2	028040243	E-14	Screw	6	002400803
E-7	Screw	6	002401603	E-15	Spring Washer	6	028040243
E-8	Spring Washer	6	028040243				

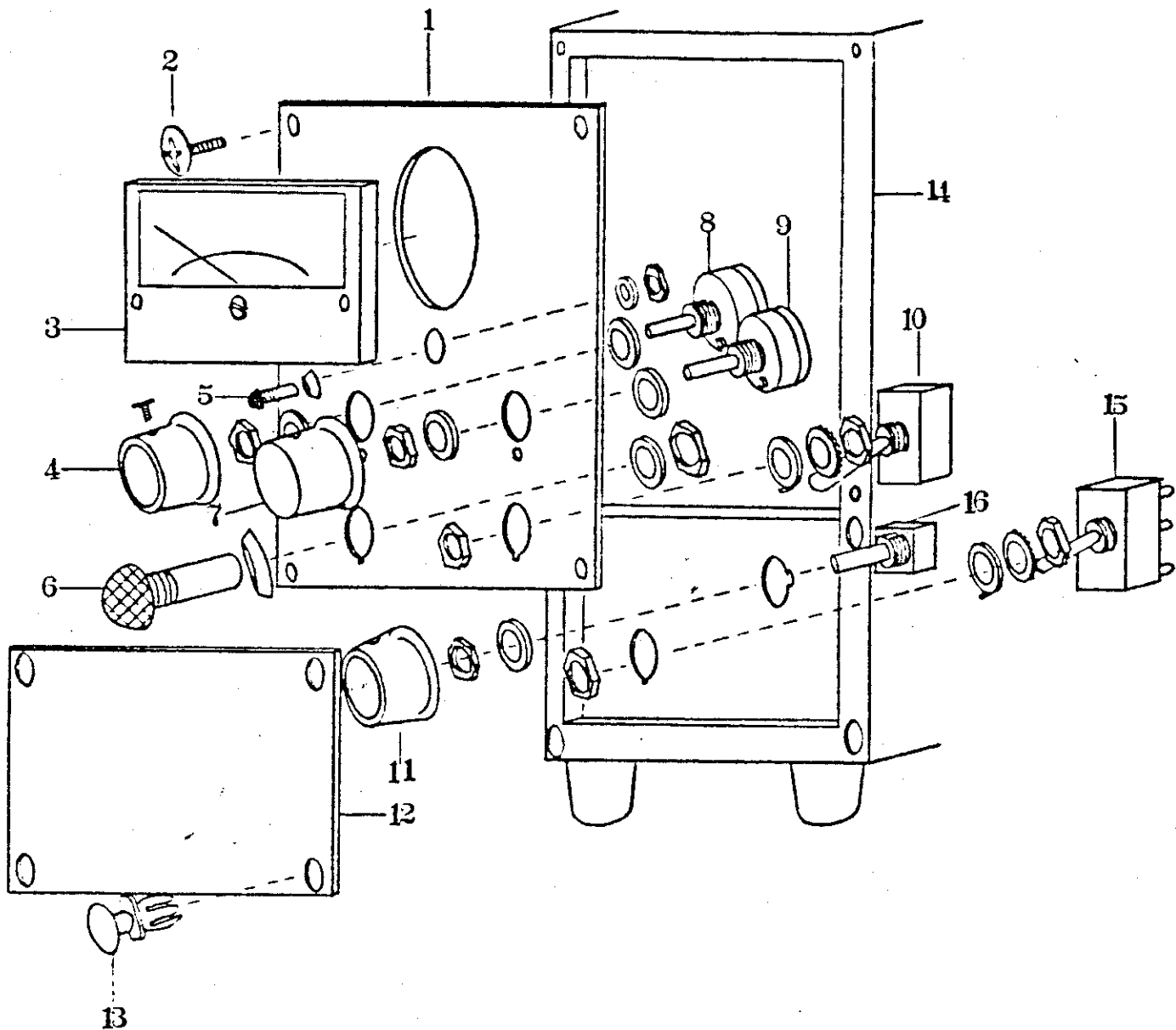
F. Leg and Treadboard



Ref. No.	Name of Parts	Qty	Parts No.	Ref. No.	Name of Parts	Qty	Parts No.
F-1	Table	1	338833000	F-11	Stopper for Treadboard	2	133637001
F-2	Bolt	2	017061606	F-12	Treadboard	1	133636001
F-3	Spring Washer	2	028060240	F-13	Treadboard Support	1	133637001
F-4	Washer	2	025060236	F-14	Outer Leg Shaft	2	133627001
F-5	Fitting Arm	1	133635001	F-15	Lever Shaft Coupling Fixture	2	
F-6	Bolt	2	017082006	F-16	Spring	1	338585000
F-7	Spring Washer	2	028080240	F-17	Knee Lifter Lever Shaft	1	
F-8	Washer	2	025080236	F-18	Spring for Lever Shaft	1	
F-9	Support Buckle	2	133638001				
F-10	Bolt	2	017061606	*	Knee Lifter Lever Shaft Assy.	1	133641001

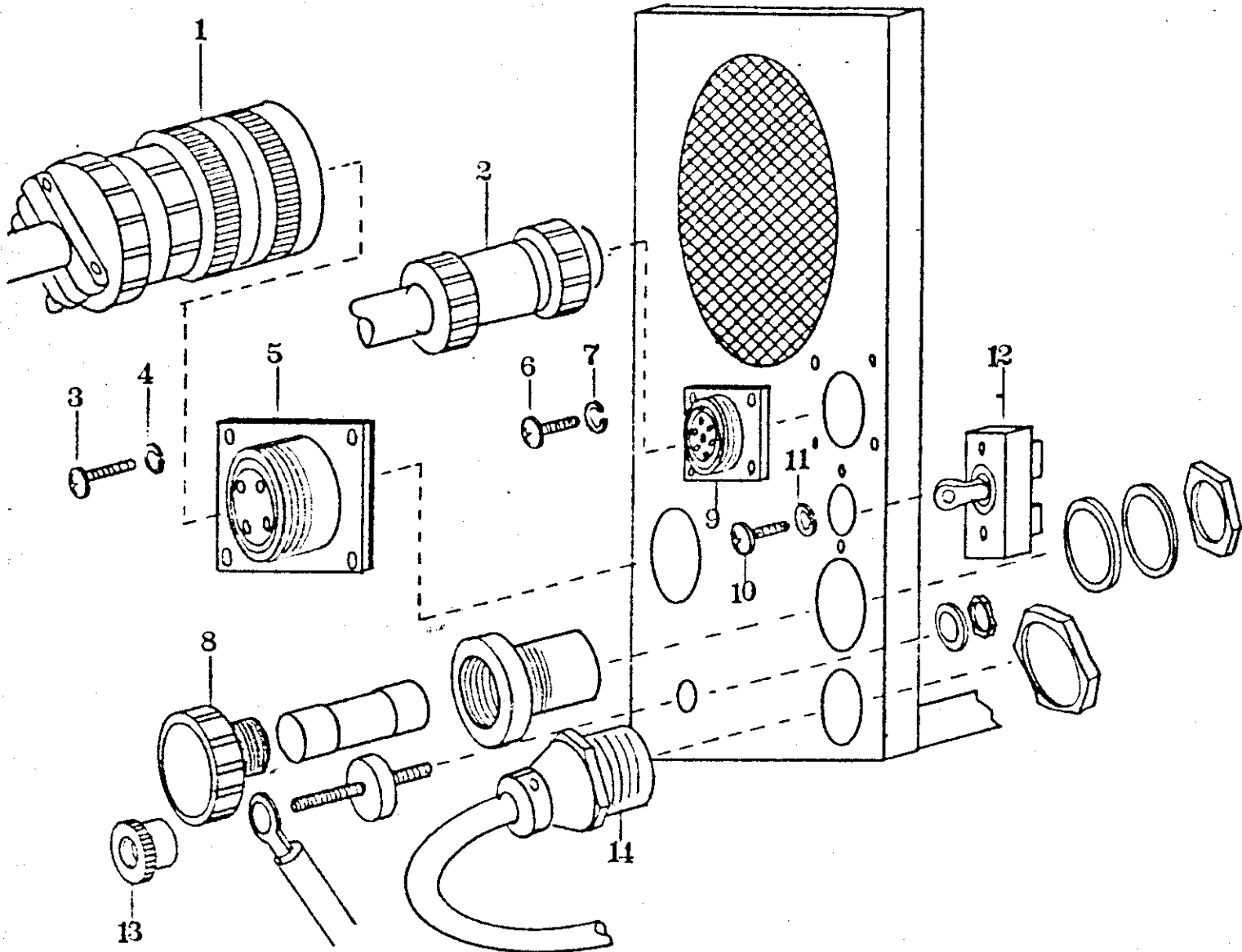
* Ref.No. F-15, F-17 and F-18 are included in Knee Lifter Lever Shaft Assembly.

G. Generator (The Front Part)



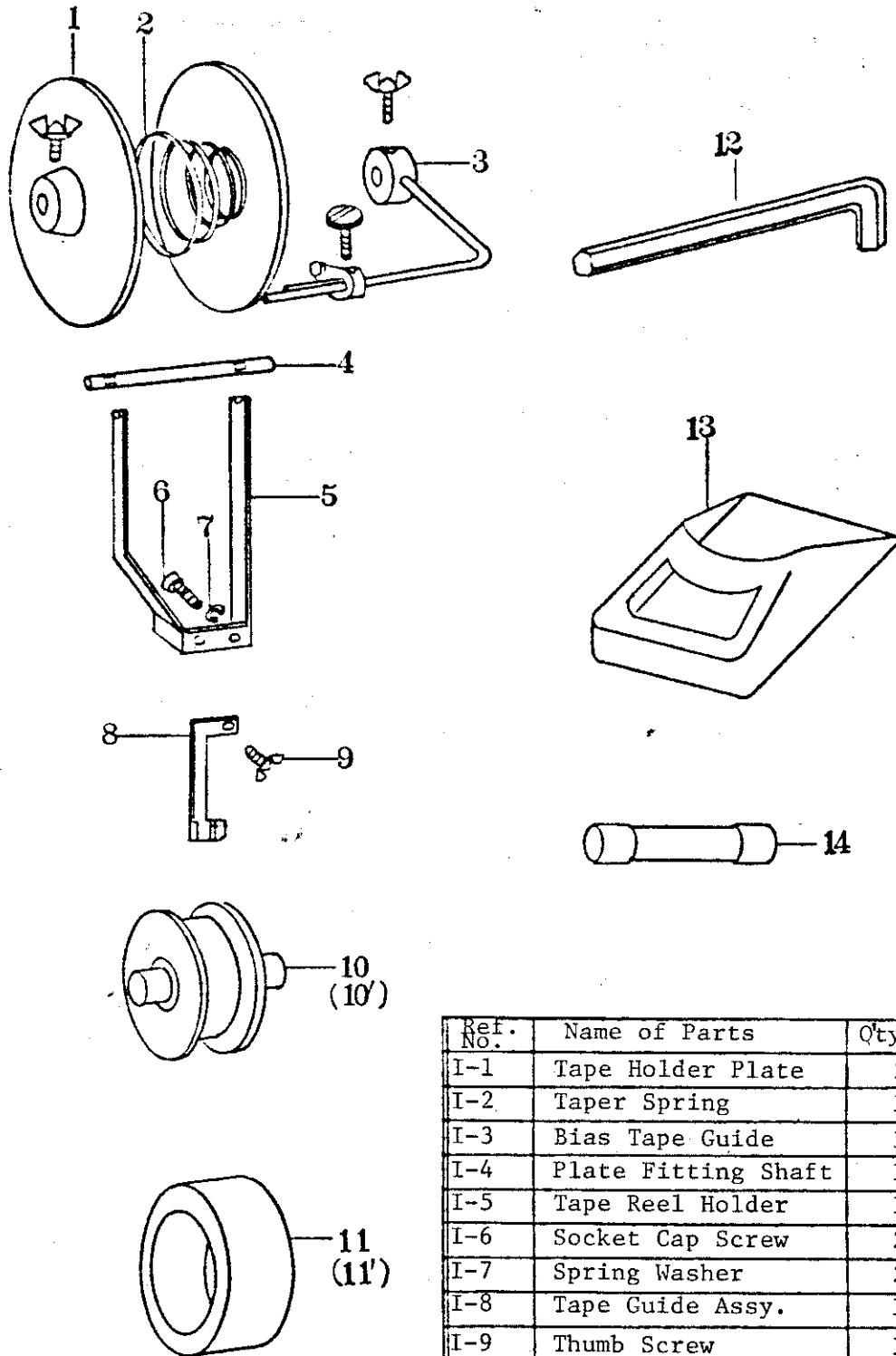
Ref. No.	Name of Parts	Qty	Parts No.	Ref. No.	Name of Parts	Qty	Parts No.
G-1	G5-223 Front Panel	1	338738000	G-10	Snap Switch	1	398622100
G-2	Screw	4	008400503	G-11	Knob K-5	1	398572000
G-3	Ampere Meter	1	338072000	G-12	Lower Front Panel	1	338228000
G-4	Knob K-11 (L)	1	398330100	G-13	Panel Fixture	4	338250000
G-5	Filament Bracket	1	398570000	G-14	G5-223 Chassis	1	338736000
G-6	Neon Bracket	1	398659100	G-15	Snap Switch	1	398352000
G-7	Knob K-11 (L)	1	398330100	G-16	Resistor	1	398268000
G-8	Resistor	1	398294100				
G-9	Resistor	1	398637100				

H. Generator (The Back Part)



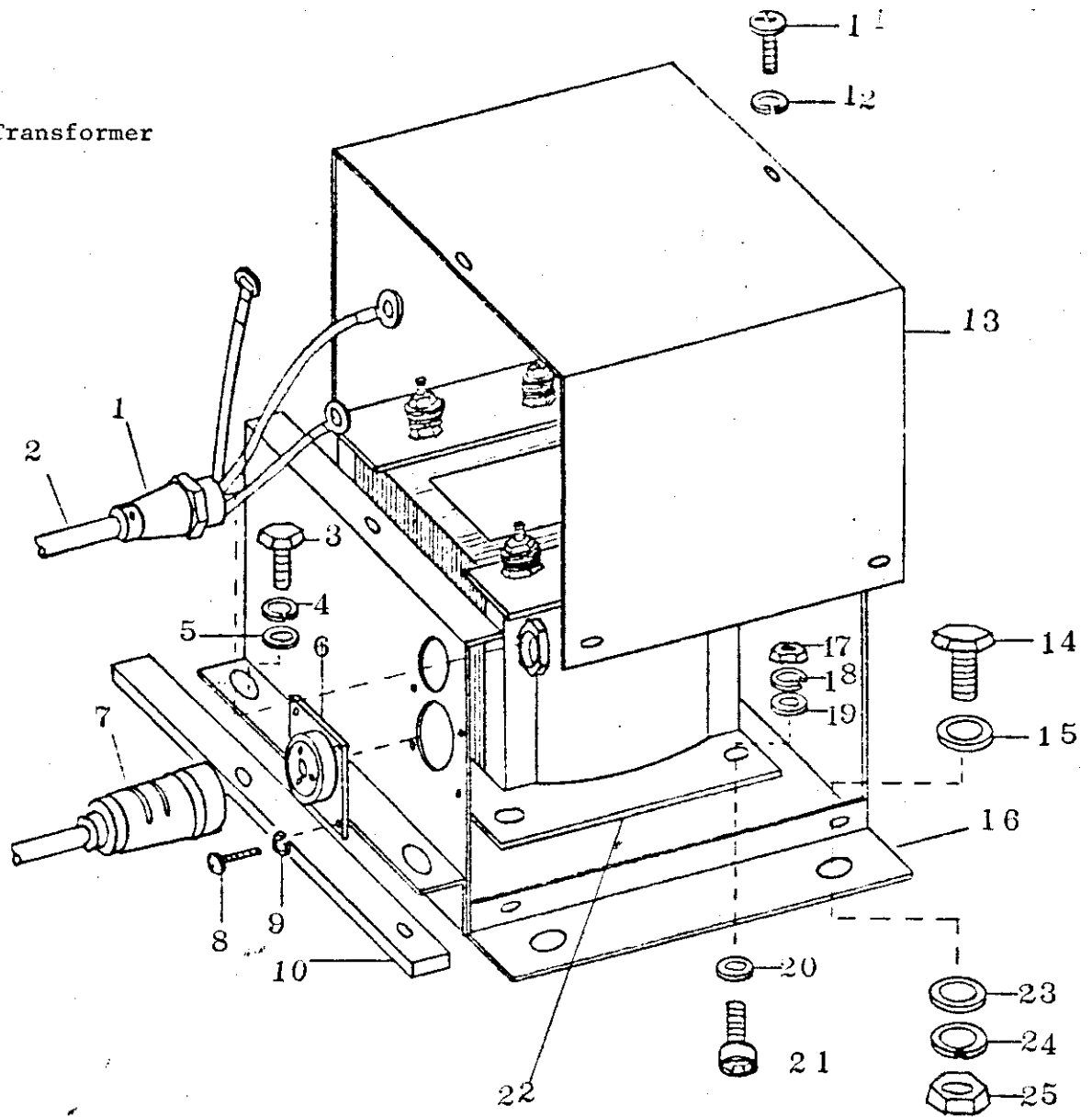
Ref. No.	Name of Parts	Qty	Parts No.	Ref. No.	Name of Parts	Qty	Parts No.
H-1	Output Cable	1	338743000	H-9	7P Connector Receptacle	1	398550100
H-2	Signal Cable	1	338722000	H-10	Screw	2	002300603
H-3	Screw	4	002400803	H-11	Spring Washer	2	028030243
H-4	Spring Washer	4	028030243	H-12	Circuit Protector	1	398639100
H-5	4P Connector Receptacle	1	398799000	H-13	Earth Terminal	1	321300019
H-6	Screw	4	002400803	H-14	Cord Lock	1	399927000
H-7	Spring Washer	4	028030243				
H-8	Fuse Holder	1	398720000				

I. Accessory



Ref. No.	Name of Parts	Qty	Parts No.
I-1	Tape Holder Plate	2	395162100
I-2	Taper Spring	1	395164100
I-3	Bias Tape Guide	1	395163100
I-4	Plate Fitting Shaft	1	338834000
I-5	Tape Reel Holder	1	338835000
I-6	Socket Cap Screw	2	018401622
I-7	Spring Washer	2	028040243
I-8	Tape Guide Assy.	1	338868000
I-9	Thumb Screw	1	390069100
I-10	Sealing Roller #1	1	338770000
I-(10')	Sealing Roller #2	1	338773000
I-11	Sealing Rubber #1	10	338771000
I-(11')	Sealing Rubber #2	10	338774000
I-12	Hexagon Wrench 3	1	394467100
I-13	Rubber for Leg	1	133632001
I-14	15A Fuse	3	398721000

J. Transformer



Ref. No.	Name of Parts	Q'ty	Parts No.	Ref. No.	Name of Parts	Q'ty	Parts No.
J-1	Cord Lock	1	399927000	J-15	Washer	2	025086233
J-2	3 Cores Cable	1	398197100	J-16	Transformer Case	1	338877000
J-3	Bolt	2	017061206	J-17	Nut	4	021060206
J-4	Spring Washer	2	028060243	J-18	Spring Washer	4	028060243
J-5	Washer	2	025066233	J-19	Washer	4	025066233
J-6	3P Receptacle	1	398721100	J-20	Washer	4	025066233
J-7	3P Plug	1	398722100	J-21	Socket Cap Screw	4	018061032
J-8	Screw	4	062300606	J-22	Transformer	1	338879000
J-9	Spring Washer	4	028030243	J-23	Washer	2	025086233
J-10	Case Fixture	1	338875000	J-24	Spring Washer	2	028080243
J-11	Screw	6	062400606	J-25	Nut	2	021080206
J-12	Spring Washer	6	028040243				
J-13	Transformer Case Cover	1	338878000				
J-14	Bolt	2	017082006				

